



Samsung SPH-A660 Display Screen Replacement

Give a short summary.

Written By: Mike Buerli



INTRODUCTION

Is your display screen cracked or not operating correctly? Replace it by following these steps.



TOOLS:

- [Phillips #00 Screwdriver](#) (1)
- [iFixit Opening Tools](#) (1)



PARTS:

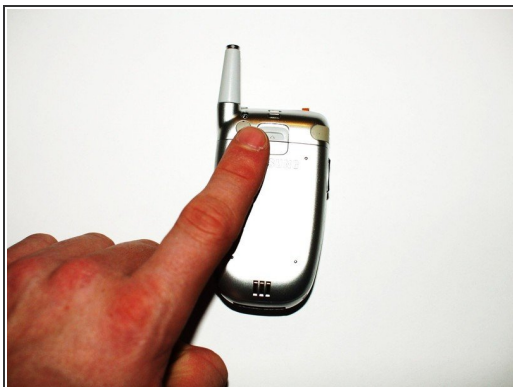
- [Replacement Display Screen for Samsung SPH-A660](#) (1)

Step 1 — Battery



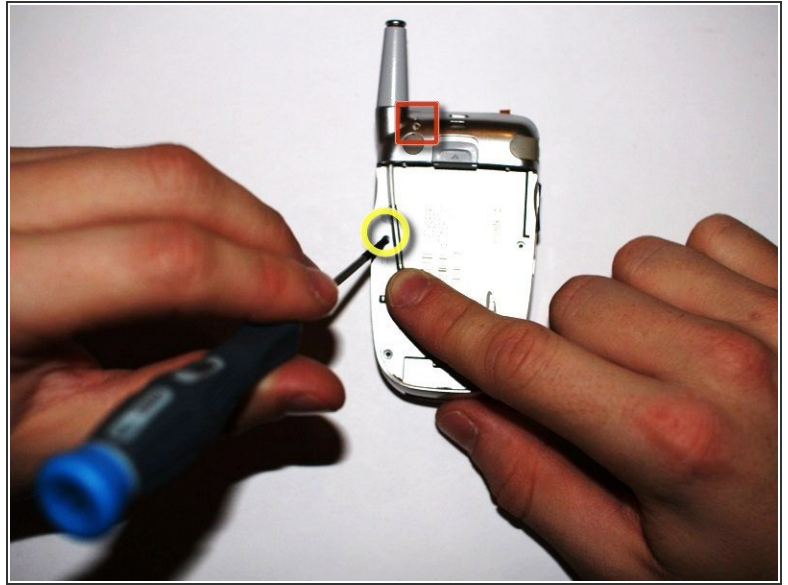
- Turn the phone over so that it is face down.

Step 2



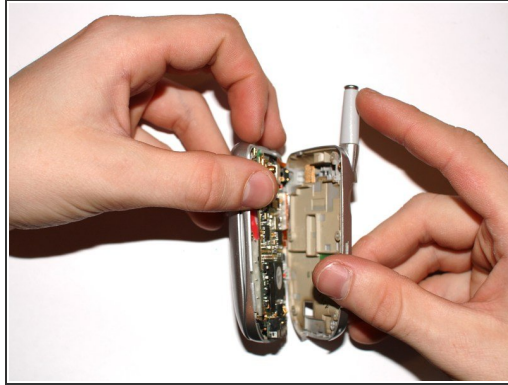
- To remove the battery, push up with your finger on the tab located on the top center of the back of the phone.
- Next, pull the battery off the back of the phone.

Step 3 — Logic Board



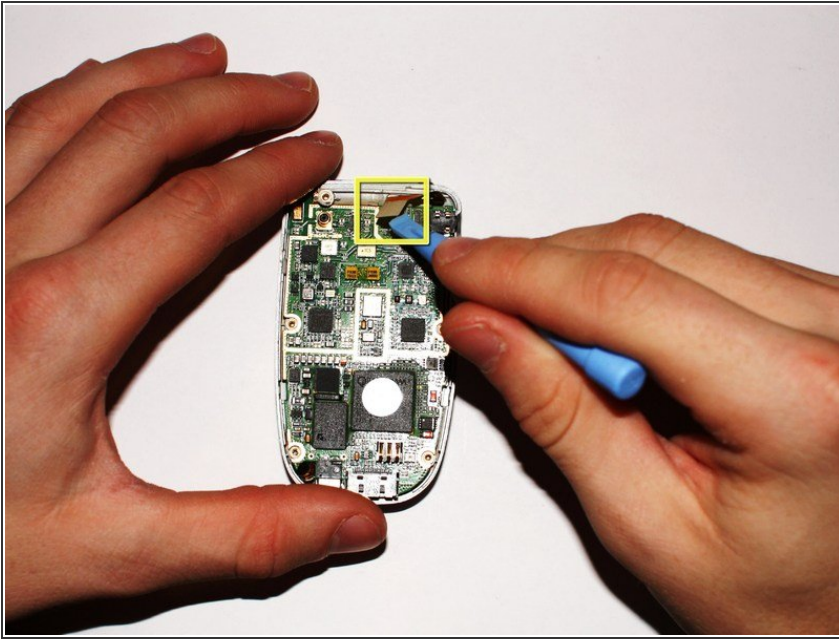
- Once the battery pack is removed from the phone, remove the five indicated screws with a size #00 Philips screwdriver.
- Bend back the antenna to access the indicated left middle screw in order to unscrew it.
- Do not forget to unscrew the indicated screw on the top left corner of the phone as it will be difficult in further steps to take the phone apart if this screw is left in.

Step 4



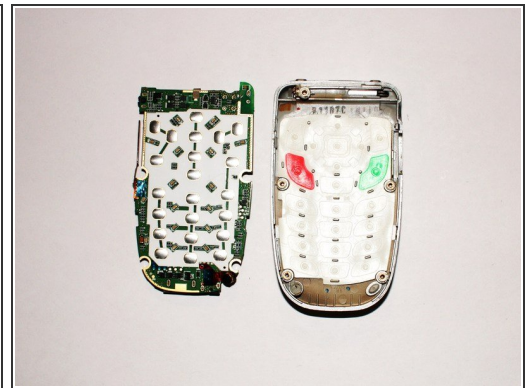
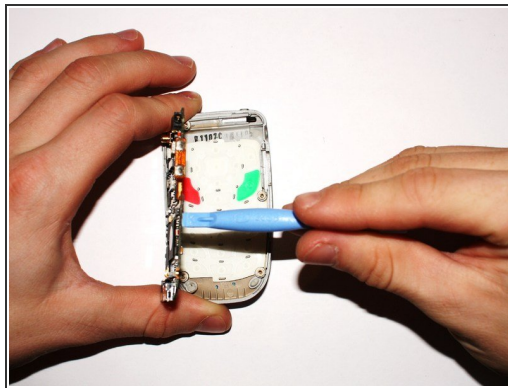
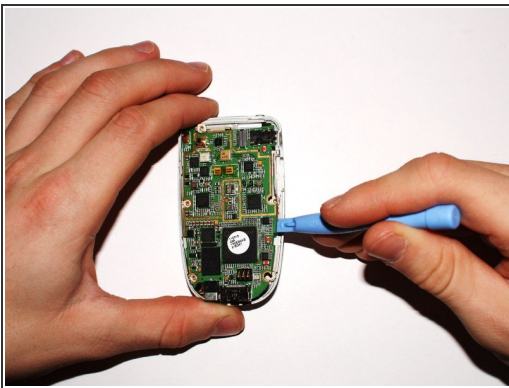
- Place the phone on its side.
- Insert the small plastic opening tool into the slot that runs along the side of the phone.
- Slowly pry open the phone by working your way around the edges of the phone with the opening tool.
- There are tabs that run the entire length of the phone which hold the phone together and you may need a significant amount of force to pry the phone apart.
- During this step, the side volume key may fall out; this is okay.

Step 5



- Carefully lift up on the highlighted connector between the logic board and the screen by using either your fingers or a plastic opening tool as shown in the picture.

Step 6



- Remove the entire green logic board from the phone by gently lifting up on the large green logic board with the plastic opening tool. Use caution not to break any components of the logic board
- Set the green logic board aside.
- The keypad may fall out, this is okay. Set it aside.

Step 7 — Display Screen



- Remove the two highlighted sticky covers by using the blue prying tool or your finger to pry off the stickers in order to gain access to the screws underneath.
- Slide the tool or your fingernail under the stickers and they should come off with relative ease.

Step 8



- Remove the two highlighted screws that were under the stickers with a size #00 Philips screwdriver, in order to open the display area.

Step 9



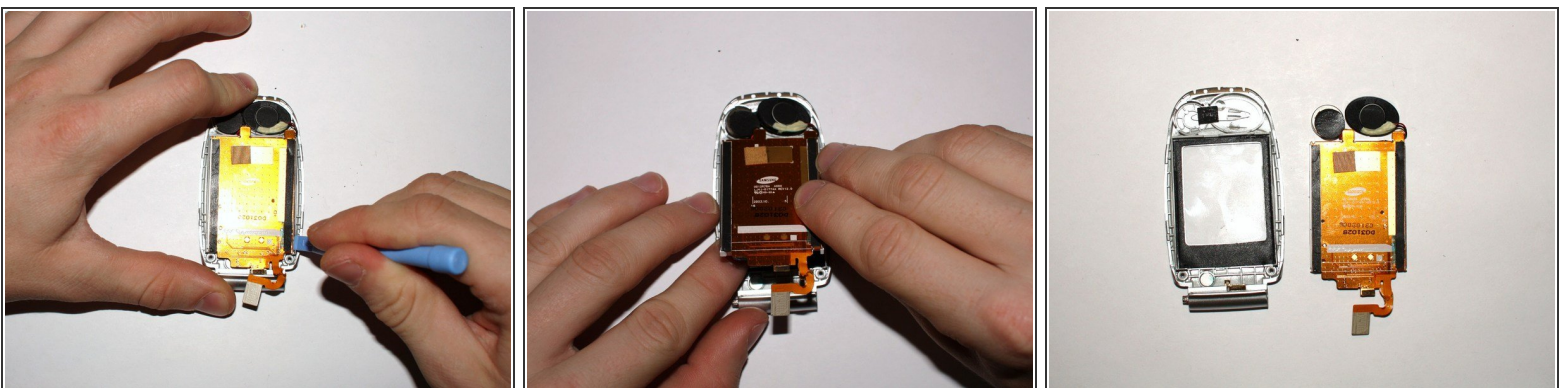
- Pry the phone display open by inserting a plastic opening tool into the crack that runs along the side of the phone display under the screws.
- Once you have the display cover wedged open, use your fingers to pry the whole outside cover off of the top half of the phone.
- Some force may be needed to remove the cover, as several tabs are there which hold the two parts in place. Therefore, be careful when prying the cover apart.
- Set the outside display cover aside. The two separate parts should look like the third picture.

Step 10



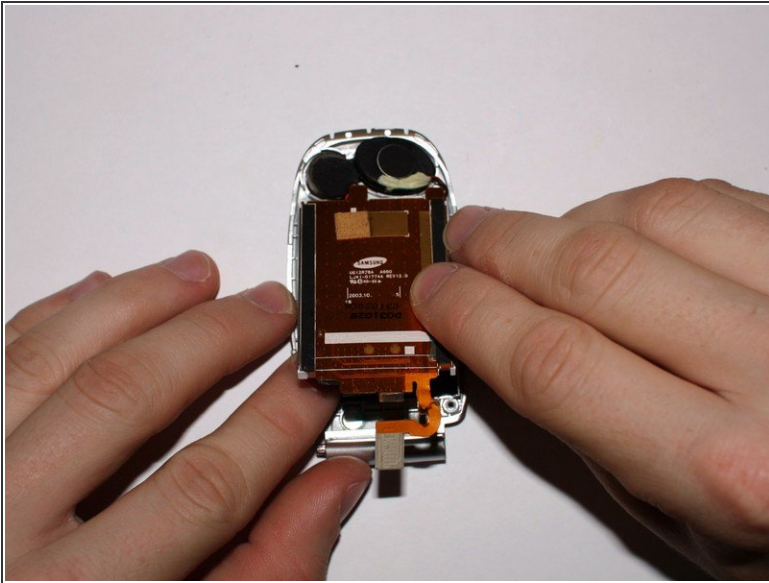
- Carefully wedge a plastic opening tool between the hinge on the body as shown in the highlighted area in picture one. (be sure to insert the wedge into the right hinge when looking down onto the phone, as in the picture).
- Slowly pry the hinge off the body as shown being done in the second picture and set the phone down after done with this step. The phone may also be pried apart with your hands.
- Because you are replacing the display screen with a new one, it is ok if the connector strip tears because the new display screen will have its own connector strip.
- Next slide the connector cable out of the slot on the back side of the phone and the screen will be disconnected from the key pad body.

Step 11



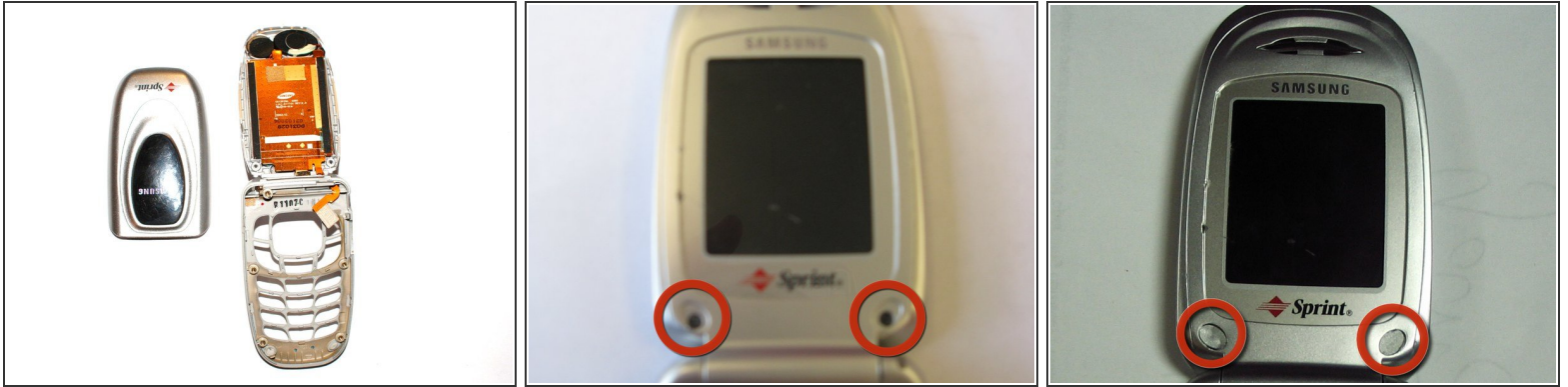
- Next use a plastic opening tool to pry the display screen from the cell phone cover.
- ❗ Replace the screen by adding your new LCD screen back onto the clear cover.

Step 12



- Be extremely careful to not rip the connector strip in this step.
- To begin the reassembly of the phone, after replacing the display screen in the display screen cover, thread the connector strip through the slot in the bottom half of the phone.
- Snap both halves of the phone back together by inserting right side of top half then snapping left side together.

Step 13



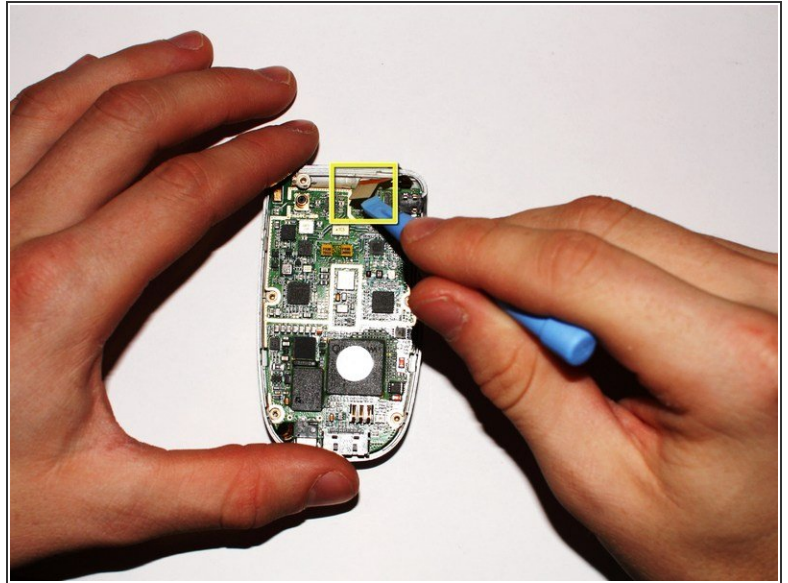
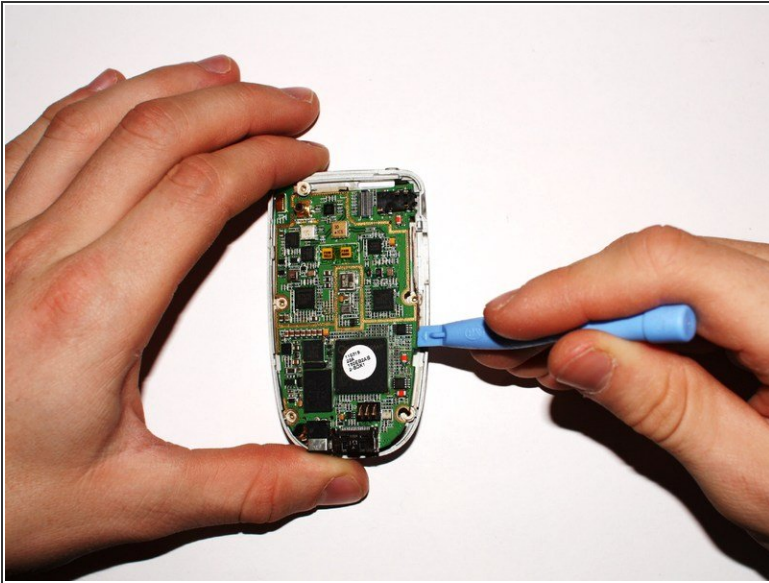
- Snap the outside of the display screen cover on the back of the top half of the phone by sliding the two pieces together and then snapping it together around the edges.
- Replace the two screws that were removed in step 8 to secure the top half of the phone.
- Put the sticky covers back on the screws.
- The top half of the phone should now be completely reassembled.

Step 14



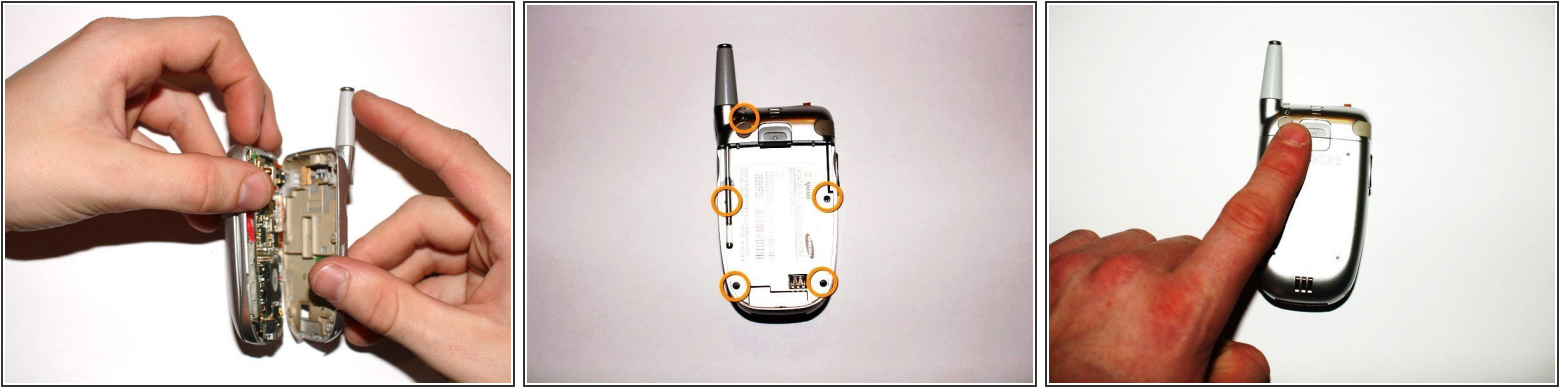
- Flip the phone over so the back is facing you.
- Put the keyboard back in its spot. The white side is the back of the keyboard and it should be up and facing you.

Step 15



- Place the logic board on top of the keyboard with the green side facing up towards you.
- Push the rectangular connector piece that was thread through the slot of the bottom half of the phone, in order to connect the logic board to the display screen.

Step 16



- Insert the volume key into the right side of the phone with the larger part of the volume key towards the top.
- Snap on the back of the phone onto the logic board.
- Screw in the five screws that were removed in step 3 to secure the back of the phone.
- Put the battery back on the phone.

To reassemble your device, follow these instructions in reverse order.