



Samsung SPH-A660 Keypad Replacement

Written By: Mike Buerli



INTRODUCTION

Is your keypad not working properly? There may be extra dust and dirt stuck up underneath it that is hindering its operations. To fix this problem follow these steps.



TOOLS:

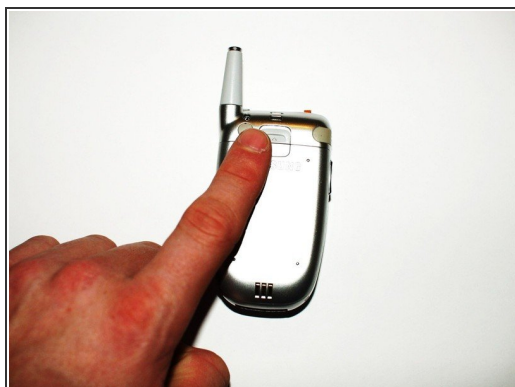
- [Phillips #00 Screwdriver](#) (1)
 - [iFixit Opening Tools](#) (1)
-

Step 1 — Battery



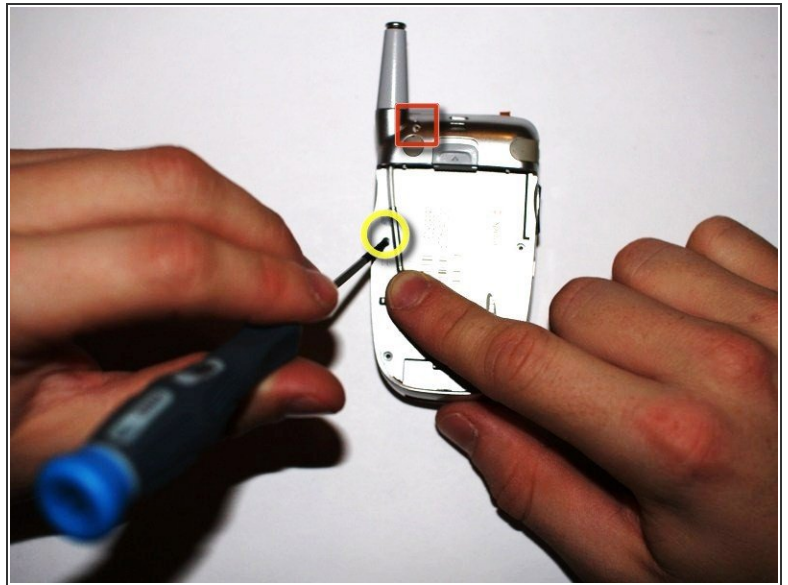
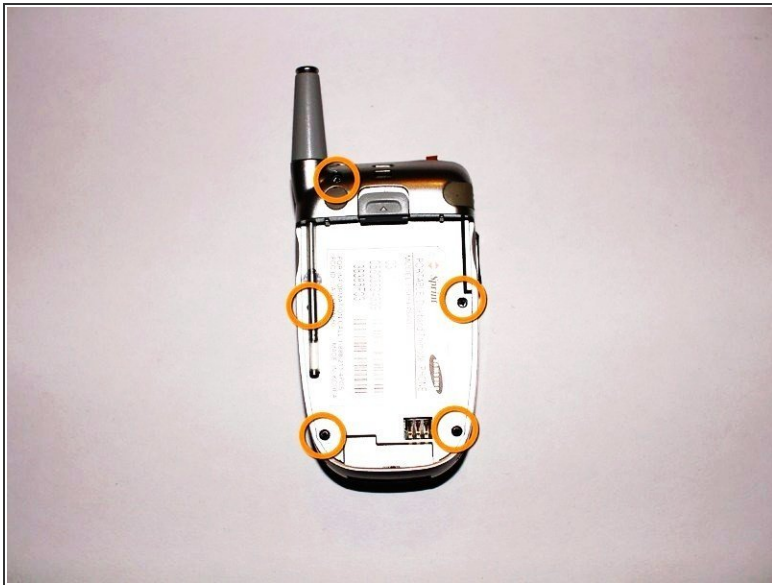
- Turn the phone over so that it is face down.

Step 2



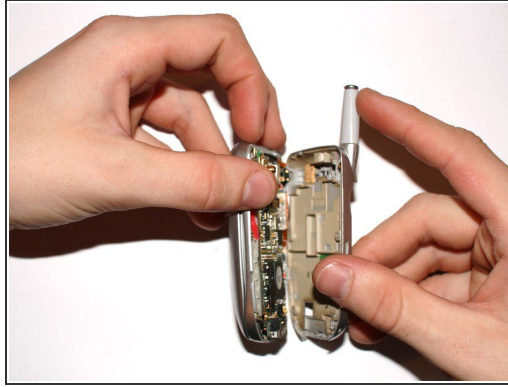
- To remove the battery, push up with your finger on the tab located on the top center of the back of the phone.
- Next, pull the battery off the back of the phone.

Step 3 — Logic Board



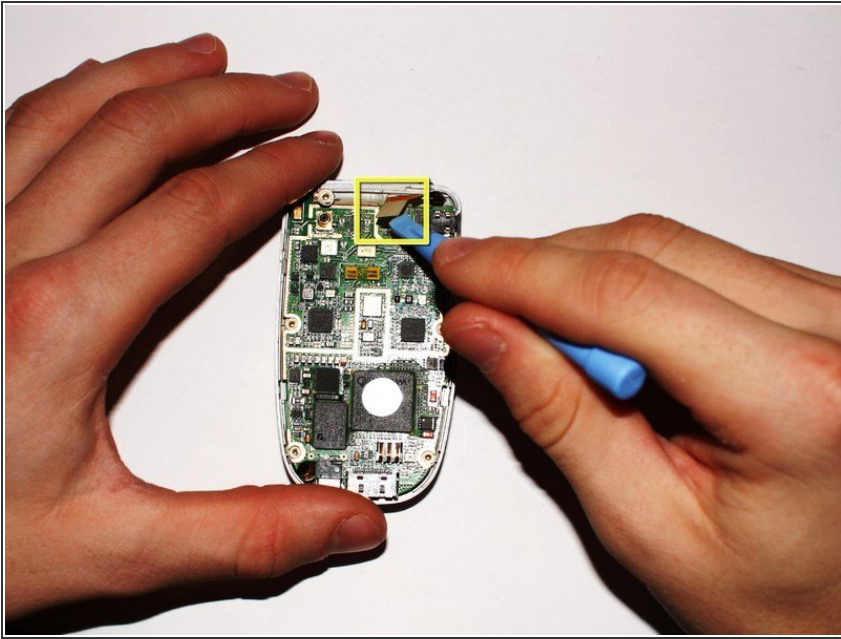
- Once the battery pack is removed from the phone, remove the five indicated screws with a size #00 Philips screwdriver.
- Bend back the antenna to access the indicated left middle screw in order to unscrew it.
- Do not forget to unscrew the indicated screw on the top left corner of the phone as it will be difficult in further steps to take the phone apart if this screw is left in.

Step 4



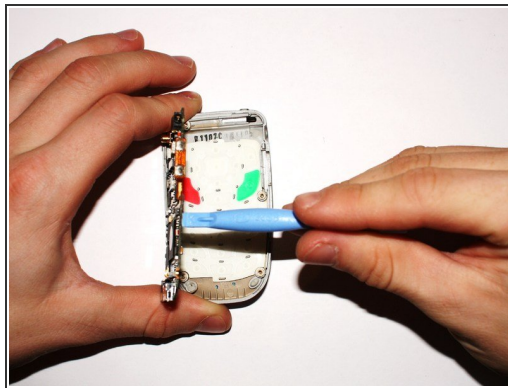
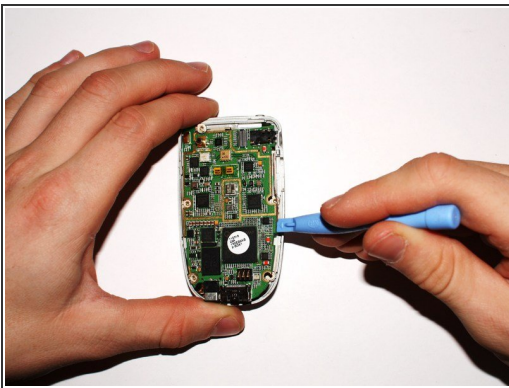
- Place the phone on its side.
- Insert the small plastic opening tool into the slot that runs along the side of the phone.
- Slowly pry open the phone by working your way around the edges of the phone with the opening tool.
- There are tabs that run the entire length of the phone which hold the phone together and you may need a significant amount of force to pry the phone apart.
- During this step, the side volume key may fall out; this is okay.

Step 5



- Carefully lift up on the highlighted connector between the logic board and the screen by using either your fingers or a plastic opening tool as shown in the picture.

Step 6



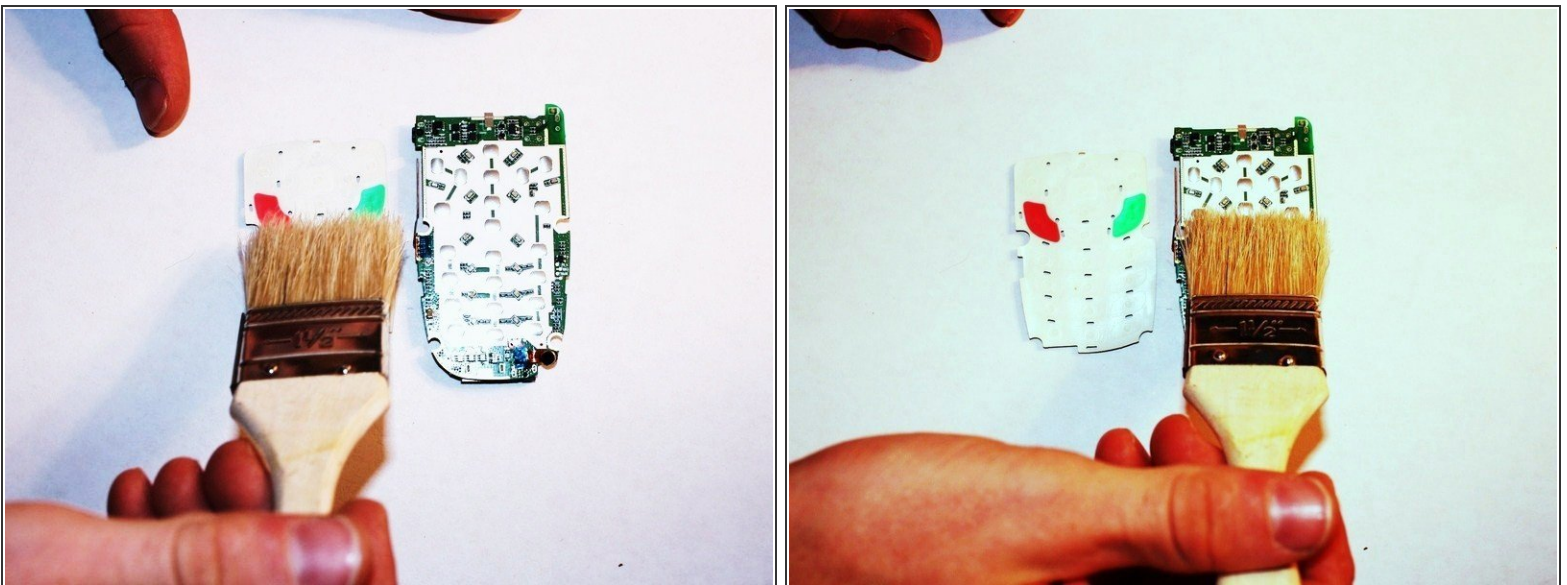
- Remove the entire green logic board from the phone by gently lifting up on the large green logic board with the plastic opening tool. Use caution not to break any components of the logic board
- Set the green logic board aside.
- The keypad may fall out, this is okay. Set it aside.

Step 7 — Keypad



- Remove the keypad from the body by grasping the white rubbery pad and lifting it off the phone.

Step 8



- Remove the dirt and grime that may accumulate under the keypad by using an air can or in this case, a brush.
- ⓘ Once you have cleaned out the keypad, follow these steps in reverse to reassemble your phone.

To reassemble your device, follow these instructions in reverse order.