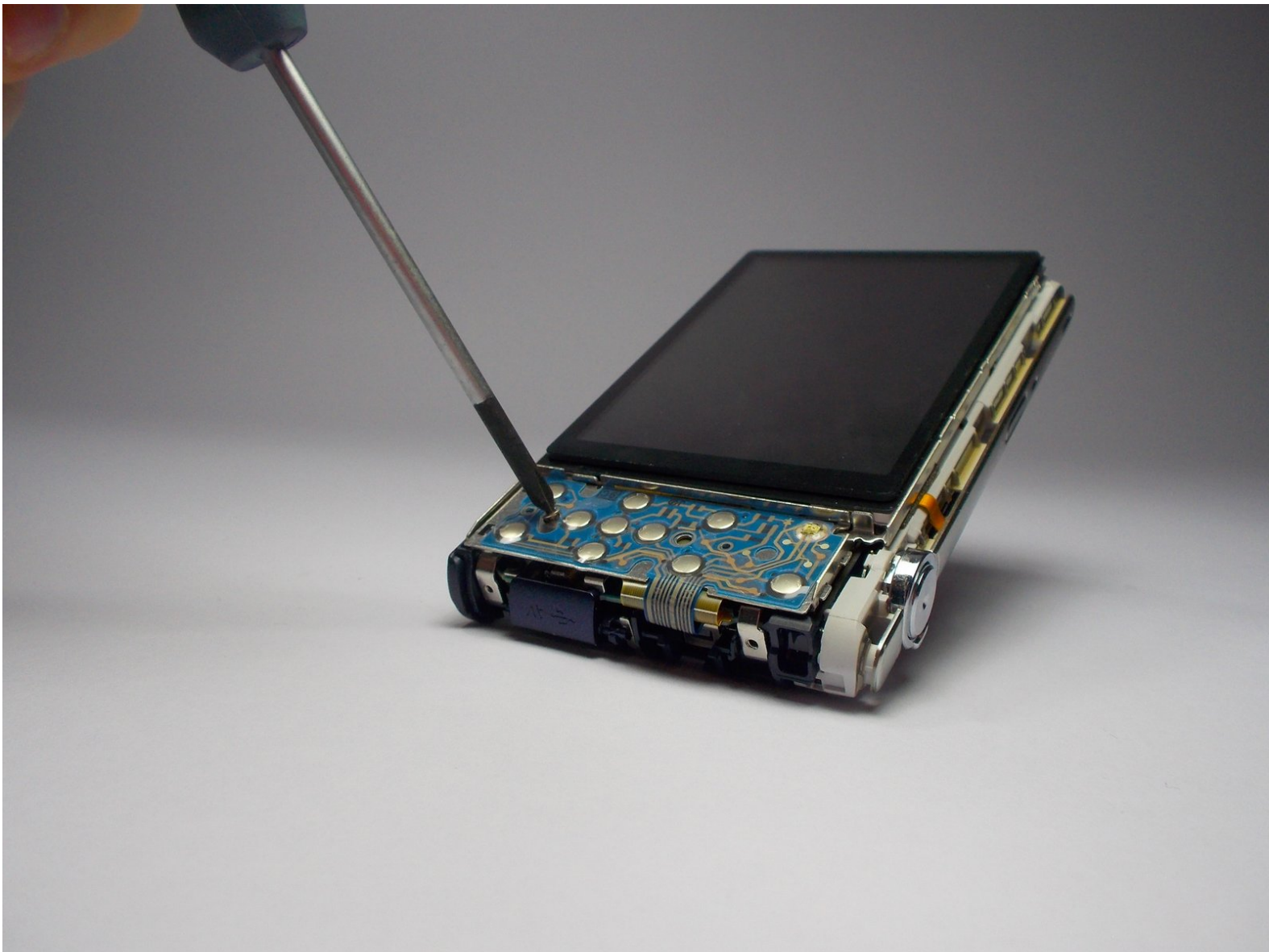




Samsung ST150F LCD Screen Replacement

This guide will show you how to replace the screen of your camera.

Written By: Nicholas Pavao

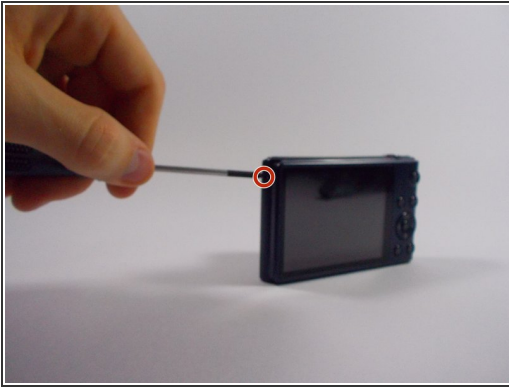




TOOLS:

- [Phillips #0 Screwdriver](#) (1)
 - [Spudger](#) (1)
-

Step 1 — Outer Casing



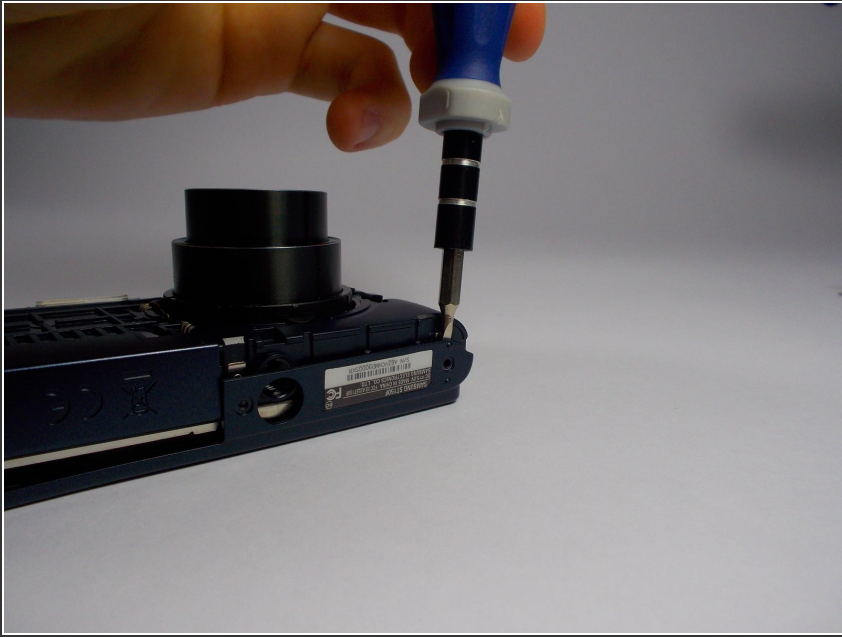
- Remove these screws from the camera using a phillips head screwdriver.

Step 2



- Lay the camera down on the table and remove the metal shell from the front.

Step 3



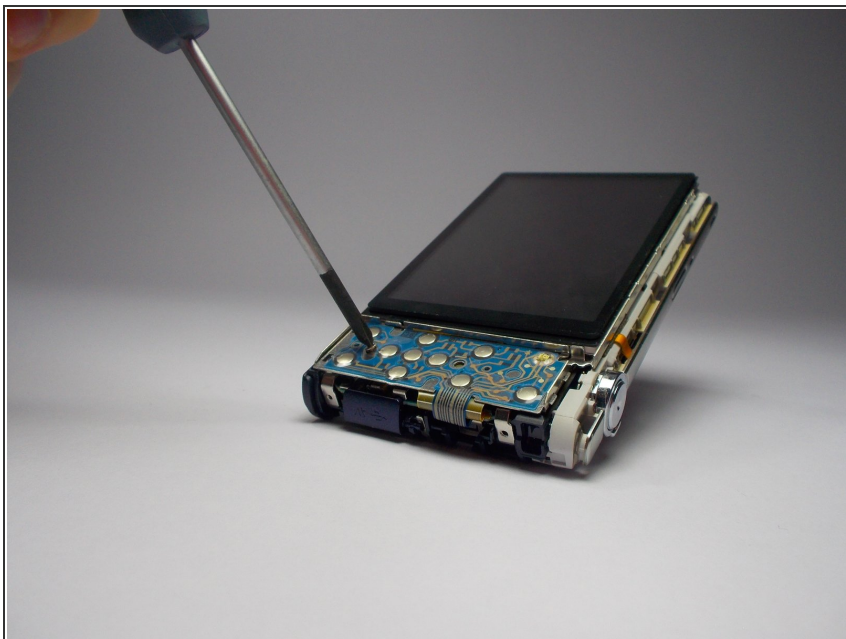
- Wedge a spudger/flathead screwdriver inside of the shell where the screws were to pry the shell off of the back.

Step 4



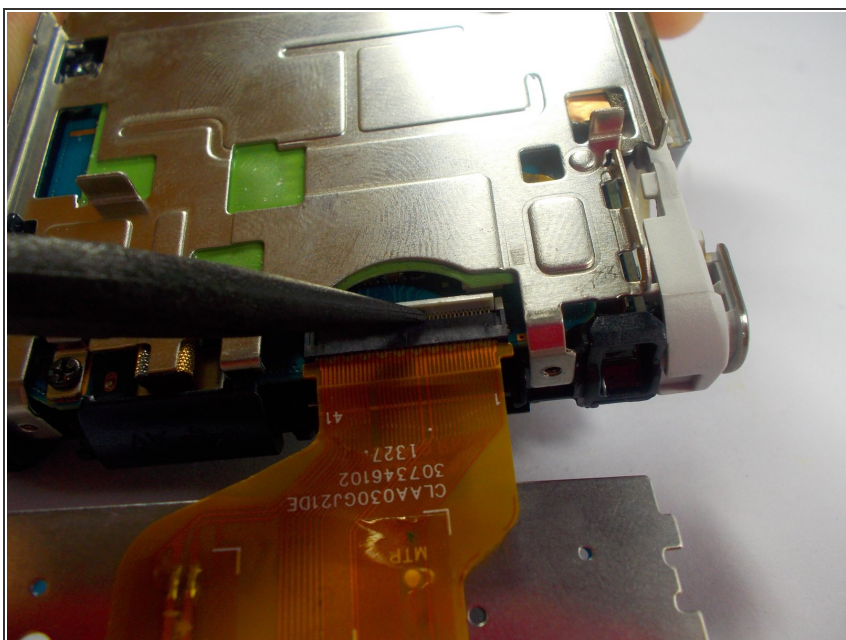
- Remove the shell the from the back of the camera.

Step 5 — LCD Screen



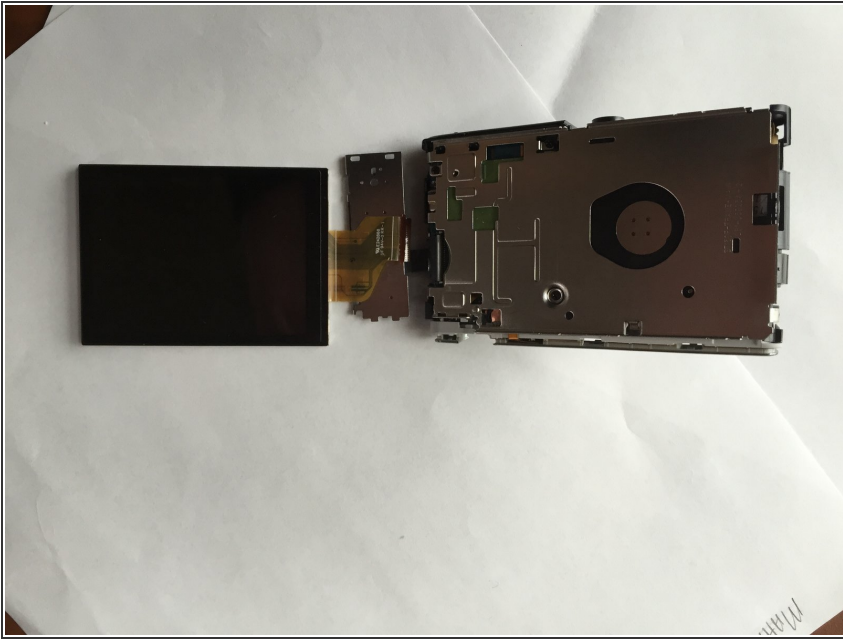
- Remove the Phillips head screw from the rear panel control board to reveal the LCD's connection to the motherboard.

Step 6



- Use a spudger to flip up the light gray lever(as shown in the photo). This will release the screen so that you may pull it out.

Step 7



- Pull the screen out of the mother board.

To reassemble your device, follow these instructions in reverse order.