



Samsung ST76 Back Panel Replacement

Use this guide to replace a damaged back cover or to access the inner parts of the camera.

Written By: Jessica Bain



INTRODUCTION

This guide can be used to replace any damaged back panels, access the screen, and other inner parts of the camera.



TOOLS:

- [Phillips #00 Screwdriver](#) (1)
-

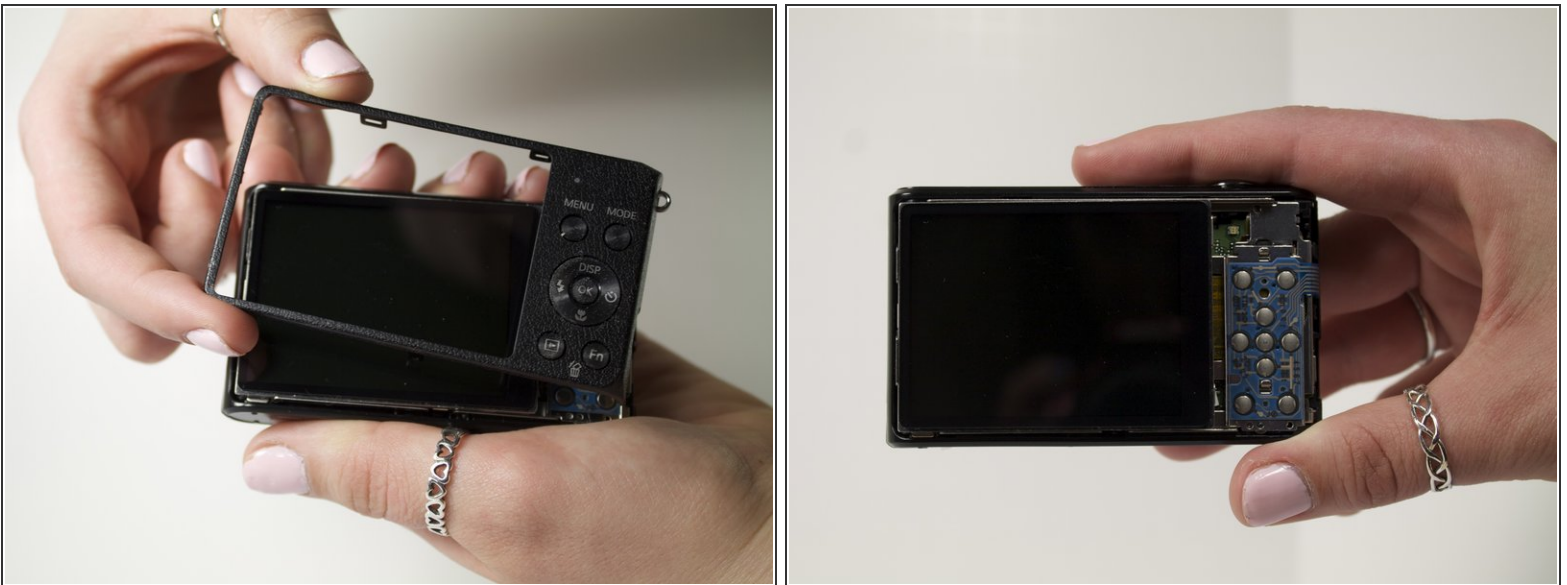
Step 1 — Back Panel



- Use a Phillips head screwdriver to remove 5 screws from the camera. There are 2 4mm screws on the left side, 2 2mm screws on the right side and 1 4mm screw on the bottom.

 *Do not mix the 5 screws; they are different sizes.*

Step 2



- Use your fingers to pull the back cover off.

To reassemble your device, follow these instructions in reverse order.