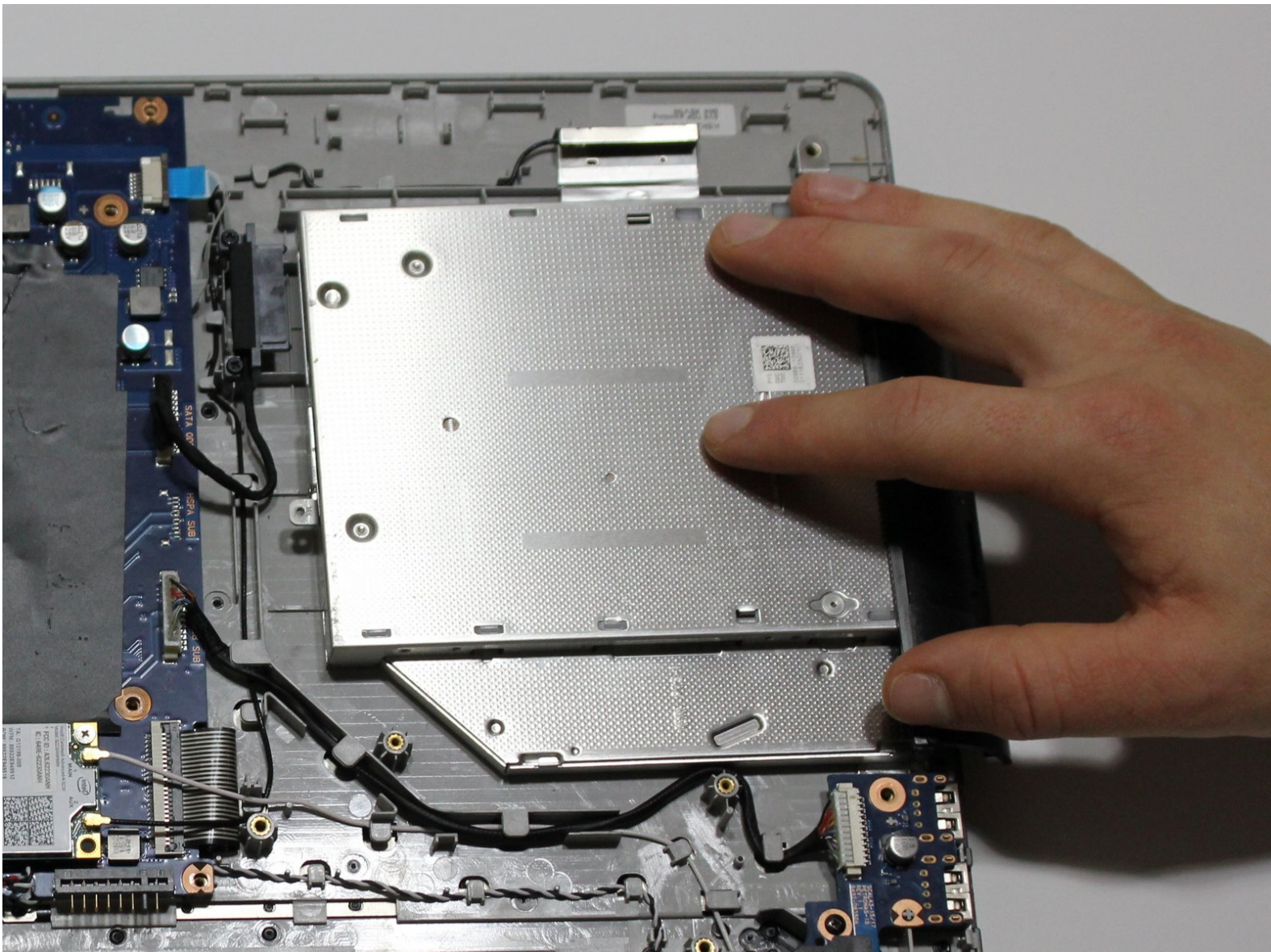




Samsung Series 3 NP300E5A-A02UB Disc Drive Replacement

This guide will show you how to remove the disc drive from the Samsung Series 3 NP300E5A-A02UB laptop.

Written By: Timothy Johnson



This document was generated on 2020-04-04 08:16:39 PM (MST).

INTRODUCTION

This guide outlines the simple steps required to remove the disc drive from the computer. Simply do what the guide tells you, and the disc drive will easily come off the computer.



TOOLS:

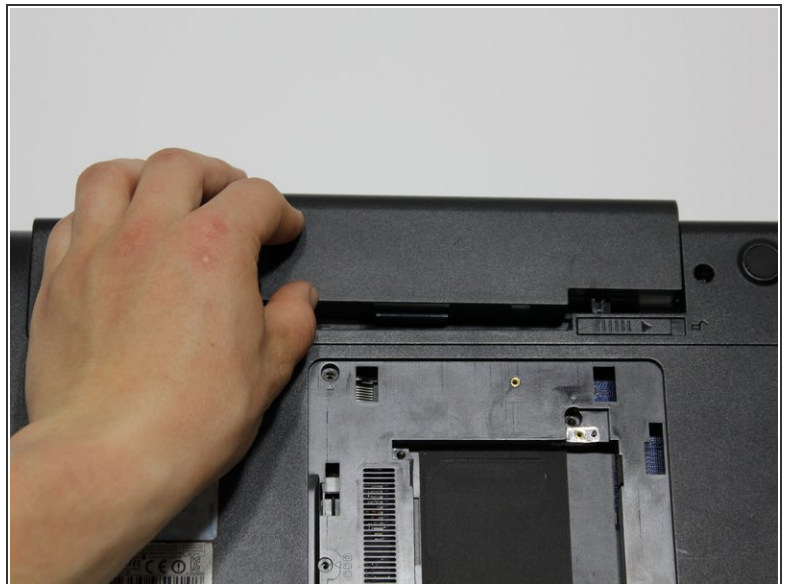
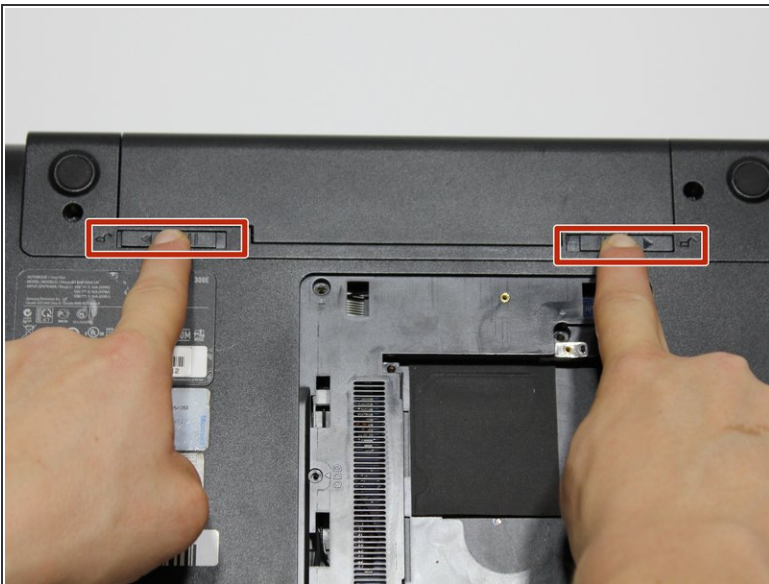
- [Spudger](#) (1)
 - [iFixit Opening Tools](#) (1)
 - [JIS #0 Screwdriver](#) (1)
 - [JIS #1](#) (1)
-

Step 1 — Battery



- Place the computer upside down, with the battery pack facing away from you.

Step 2



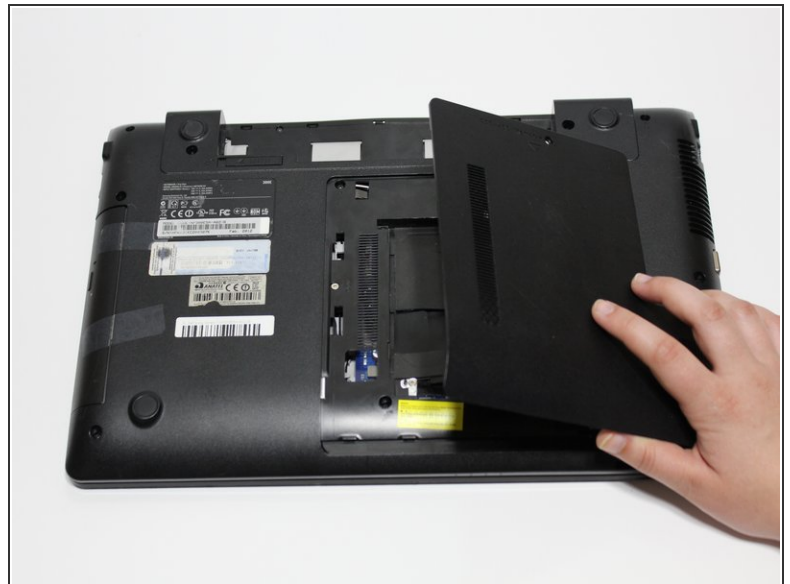
- Remove the battery by pushing out the locks on either end then pushing the battery away from you.

Step 3 — Panel



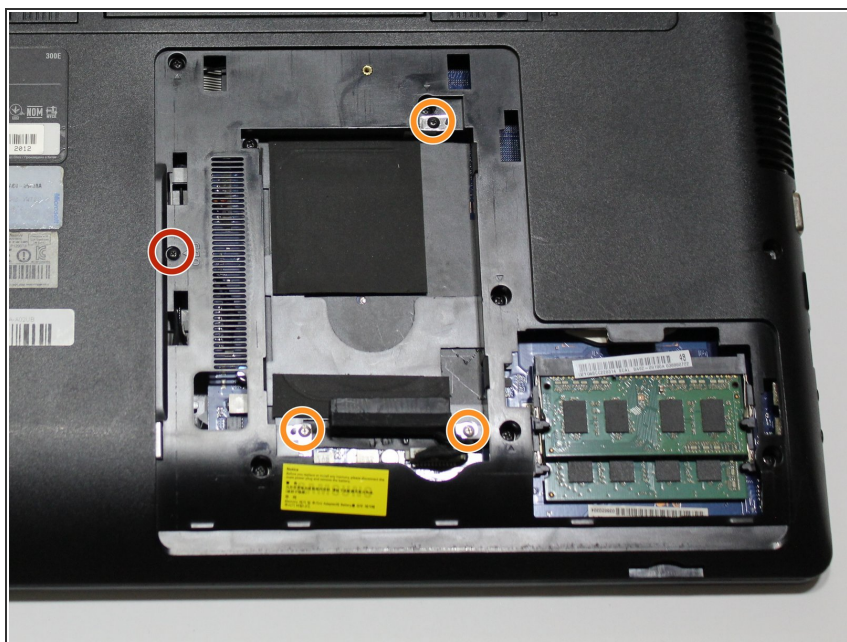
- Using the J0 Japanese Industrial Standard screwdriver, remove the 4.5mm screw on the ODD/HDD Memory panel.

Step 4



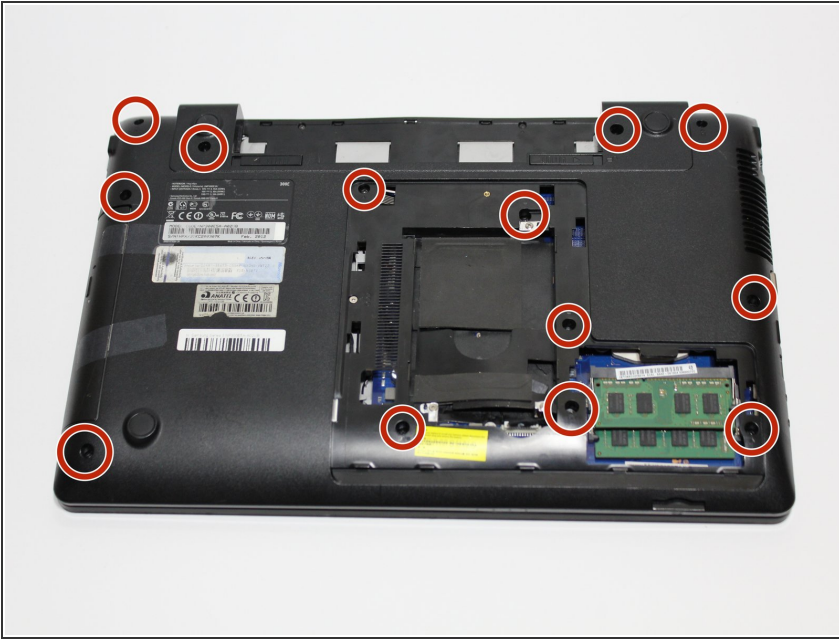
- Pull the panel towards you to release it, then lift it off the computer.

Step 5



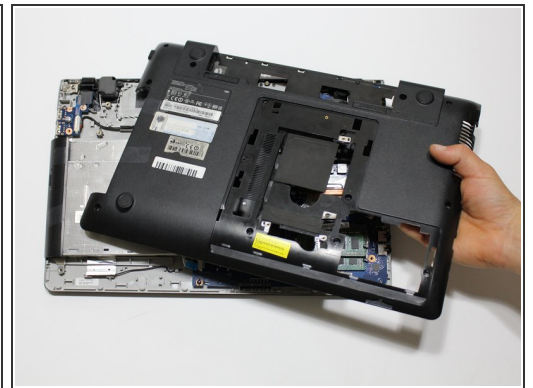
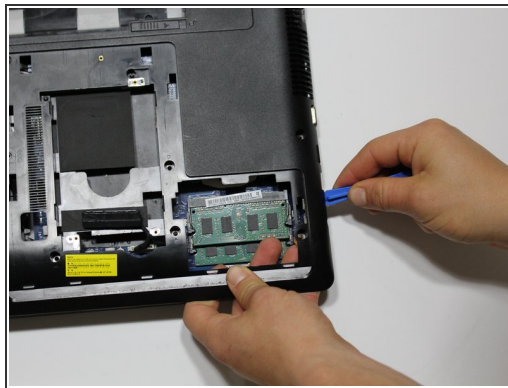
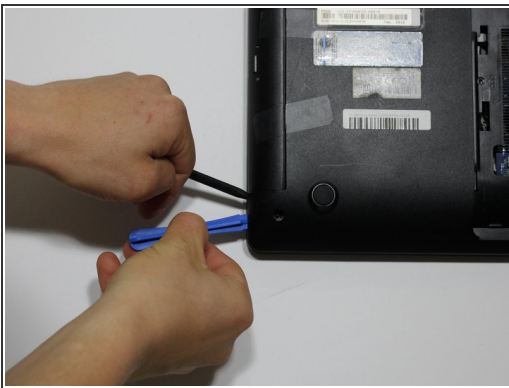
- Using the J0 Japanese Industrial Standard screwdriver, remove the 4.5mm screw next to the label "ODD."
- Remove the three 4.5mm screws from around the memory drive nest.

Step 6



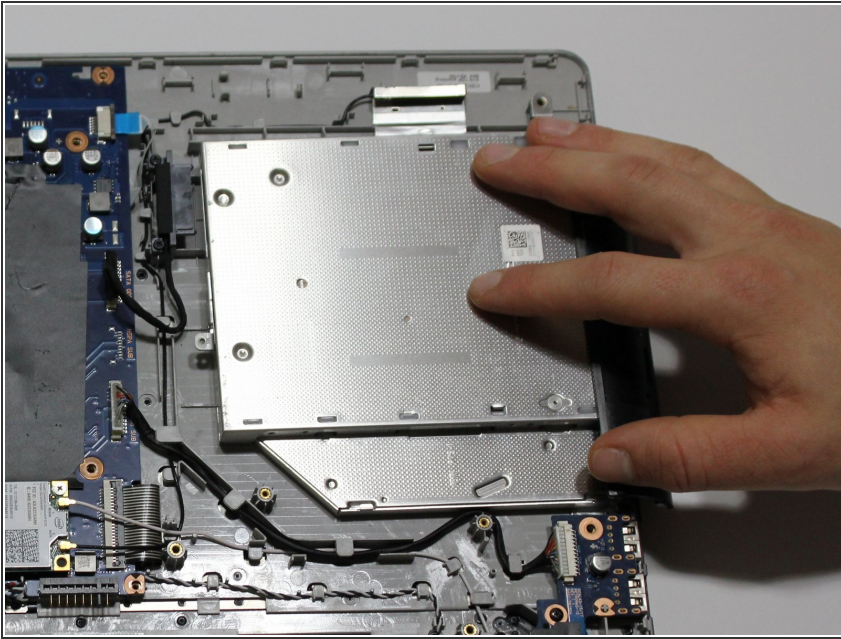
- Using the J1 Japanese Industrial Standard screwdriver, remove the thirteen 9.5mm screws from the panel that cover the bottom of the computer.

Step 7



- Begin removing the computer casing by prying beside the disk drive with the iFixit opening tool and the spudger, working counterclockwise.
- Lift the panel from the computer.

Step 8 — Disc Drive



- Remove the disc drive by pulling it towards the outside of the computer.

To reassemble your device, follow these instructions in reverse order.