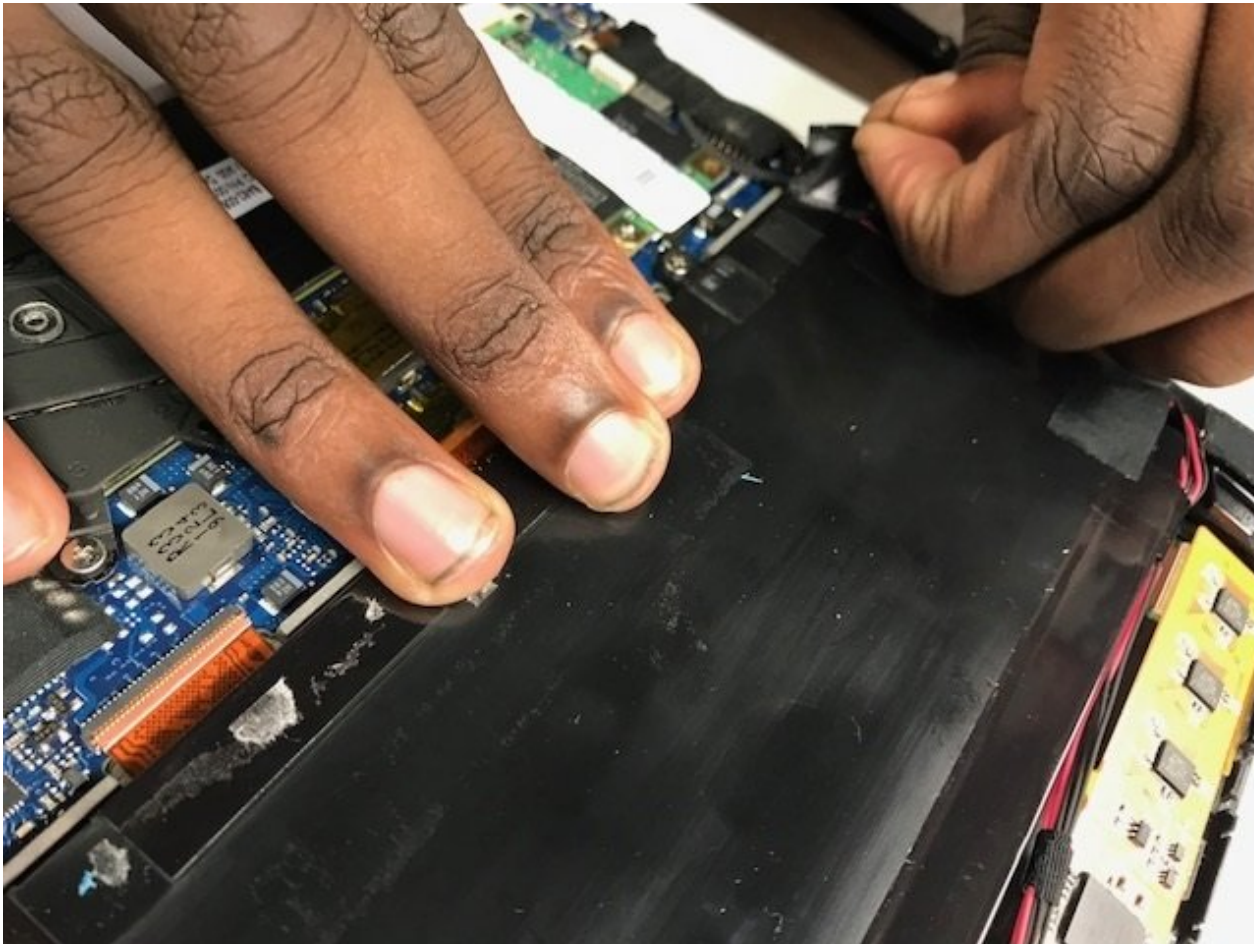




Samsung Series 7XE700T1A Battery Replacement

this guide should be used to replaced the battery for the Samsung Series 7XE700T1A

Written By: james

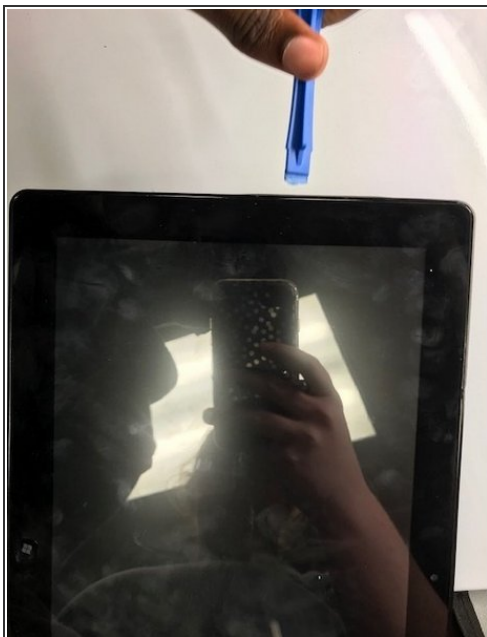




TOOLS:

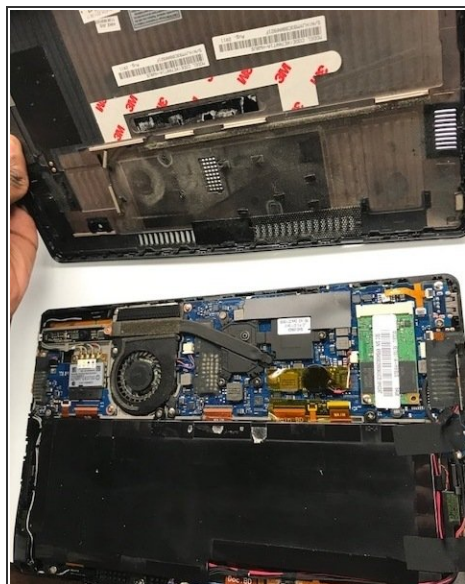
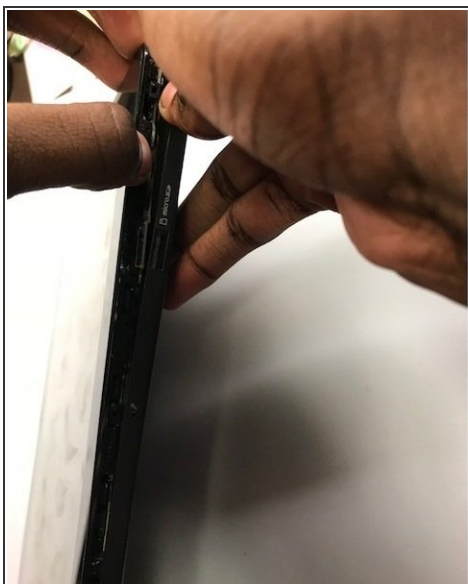
- [Phillips #000 Screwdriver](#) (1)
-

Step 1 — Back panel



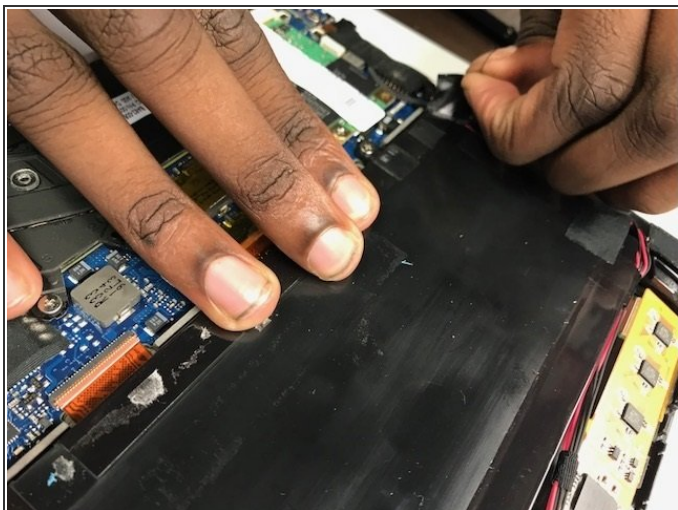
- Wedge the opening tools inside the device and move it around the perimeter until you have loosened the adhesive that is keeping it together.

Step 2



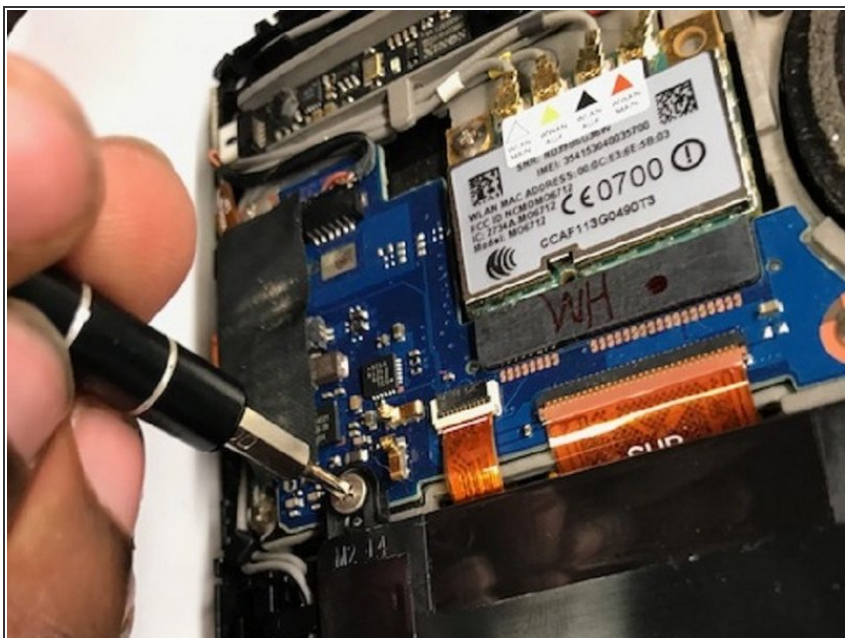
- With your hands, open up the back panel, separating it from the tablet.

Step 3 — Battery



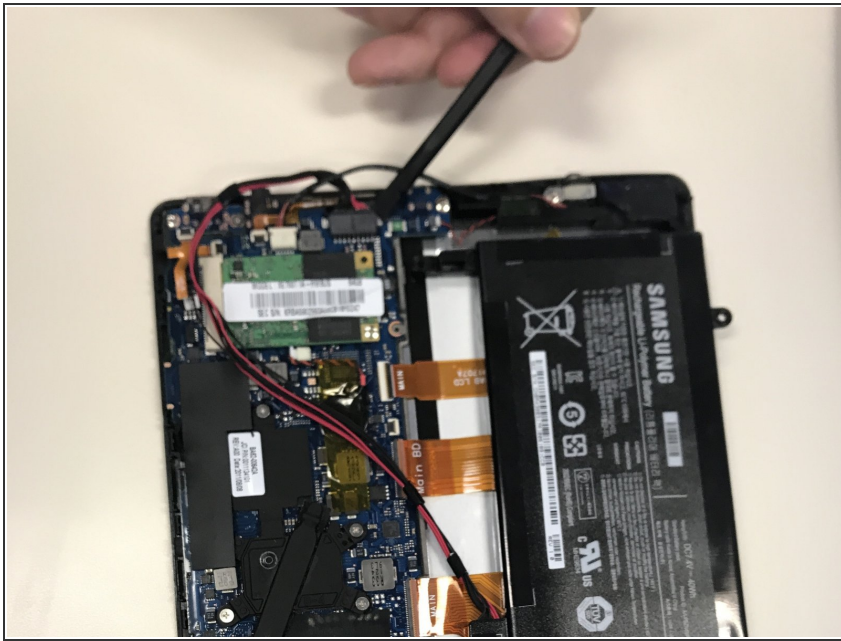
- With the back panel removed, take the tape off the battery restricting it from coming loose.

Step 4



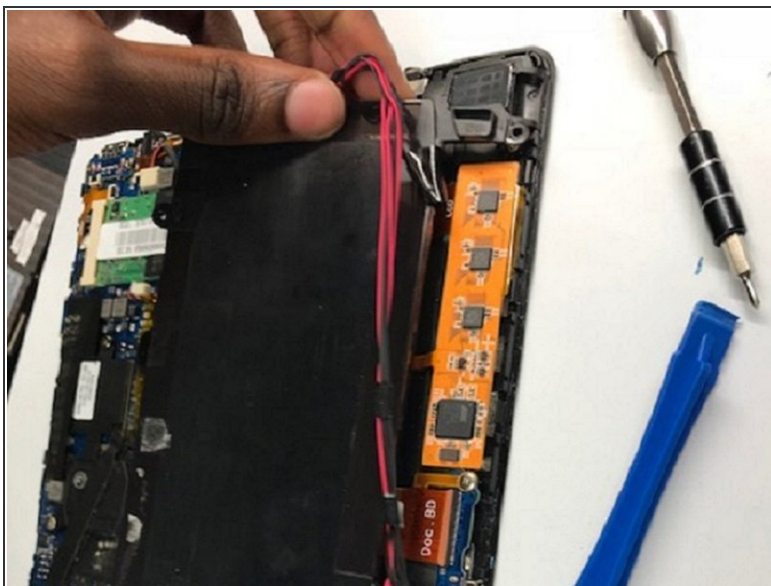
- Using the FH000 phillip screwdriver, unscrew the screw that connects the battery to the motherboard, releasing the battery.

Step 5



- Lift the clamp that is holding on to the red and black wires by using a spudger.
- Remove the wires from the clamp.

Step 6



- After all the screws are removed, and all wires are detached, lift the battery away from the tablet.

To reassemble your device, follow these instructions in reverse order.