



# Samsung Series 7XE700T1A Power button Replacement

This guide should be use for replacing the power button for the Samsung Series 7XE700T1A

Written By: james





## TOOLS:

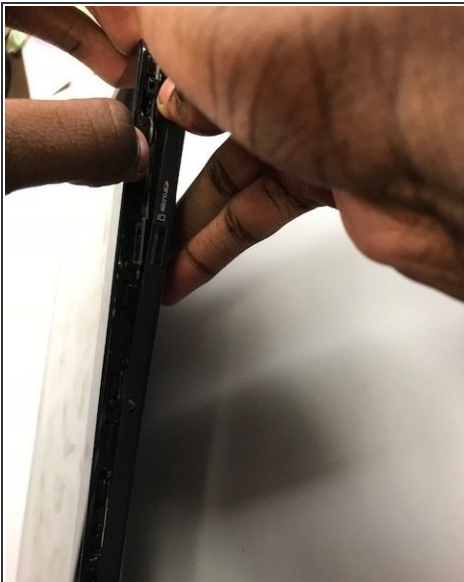
- [iFixit Opening Tools](#) (1)
-

## Step 1 — Back panel



- Wedge the opening tools inside the device and move it around the perimeter until you have loosened the adhesive that is keeping it together.

## Step 2



- With your hands, open up the back panel, separating it from the tablet.

## Step 3 — Power button



- With the back panel already removed from the body of the tablet, push the power button(the button with the O/I symbol next to it) out of the panel from the inside. Do so with either your fingers or the removal tools.

To reassemble your device, follow these instructions in reverse order.