



Written By: Evan Noronha



Page 1 of 8

INTRODUCTION

Proving once again that thin and light can still be repairable when thoughtfully designed, the Series 9 15" scores a near-perfect 9 out of 10.

TOOLS:

- [Phillips #0 Screwdriver](#) (1)
 - [iFixit Opening Tool](#) (1)
 - [Spudger](#) (1)
 - [iFixit Opening Picks set of 6](#) (1)
-

Step 1 — Samsung Series 9 15" Repairability Assessment



- Reference shots.

Step 2



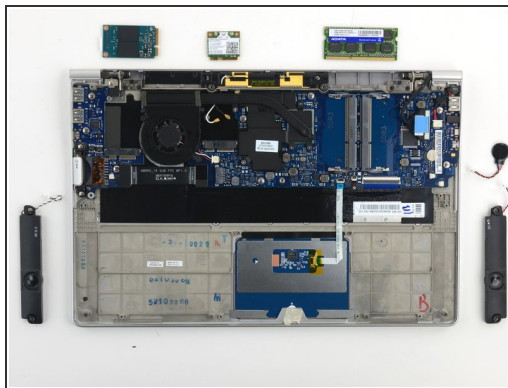
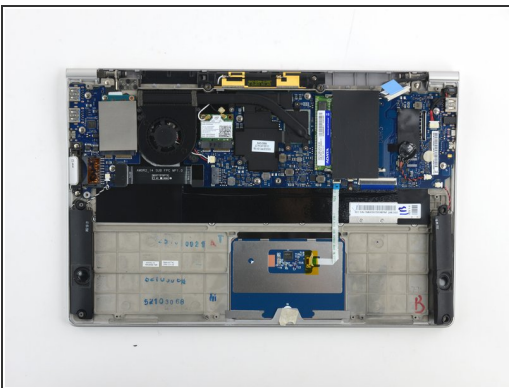
- Opening procedure is piece of cake. Remove 10 Phillips screws and lift the rear panel off.
 - ① It's clipped in along the back edge but not very strongly.
- Internal view.
- This is seriously cool. From here we can remove: SSD, RAM, battery, right speaker, *display assembly*, wireless card, (modular!) headphone jack and thermal assembly.
 - ① That's pretty much everything you'd ever want to tinker with in a laptop. The only commonly-replaced components we can't reach is the keyboard, trackpad, and motherboard.

Step 3



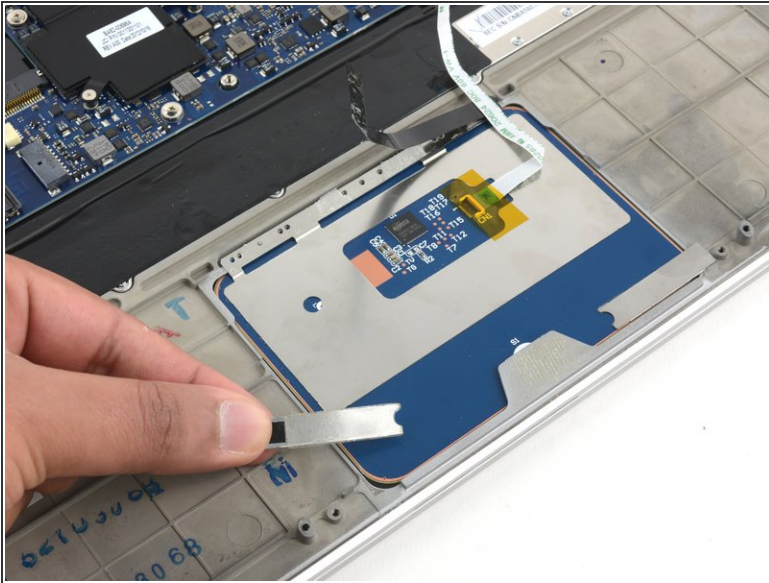
- To keep things uniform, we're starting with the battery.
- It's held in with seven Phillips screws and comes out in a flash.

Step 4



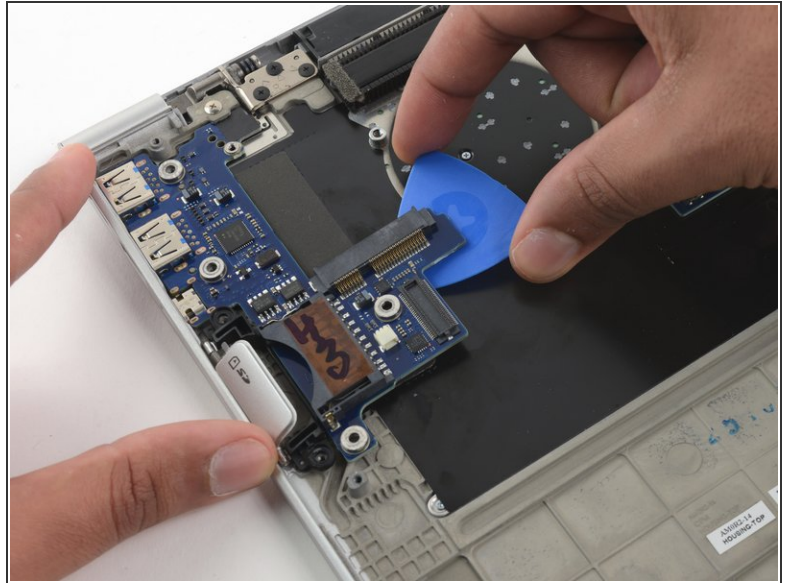
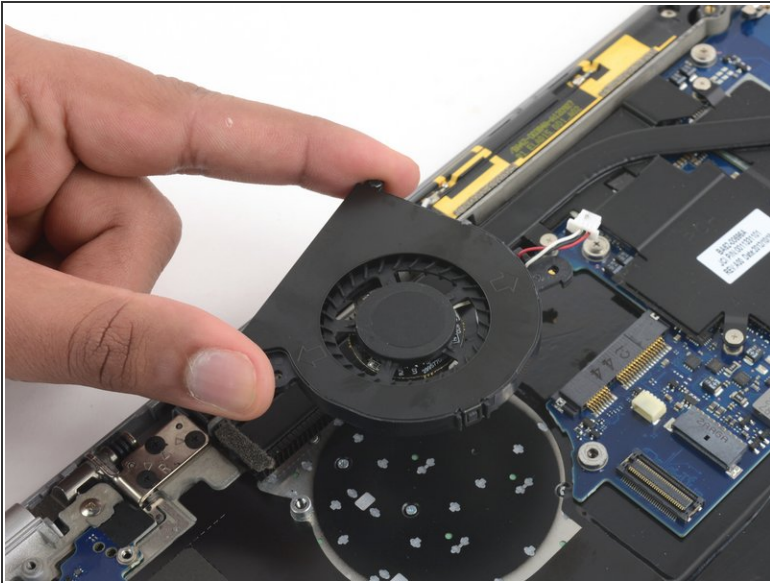
- We then start picking parts off the motherboard and the peripherals.
- Along the way, we discover room for not one, but two RAM modules.
- ① That addition, along with the standard, removable SSD means this laptop is super upgradable.

Step 5



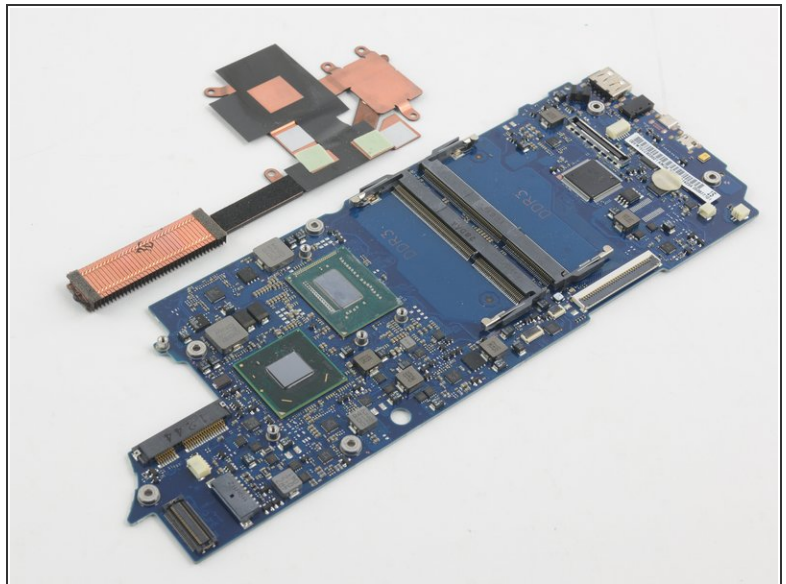
- We *could* remove the motherboard at this point, but pause to take a look at this trackpad.
- Seemingly held in place with just five screws, but we remove them and it won't budge.
- Then we peel off this pair of taped-in brackets, pry from the top bracket, and successfully remove the trackpad assembly.

Step 6



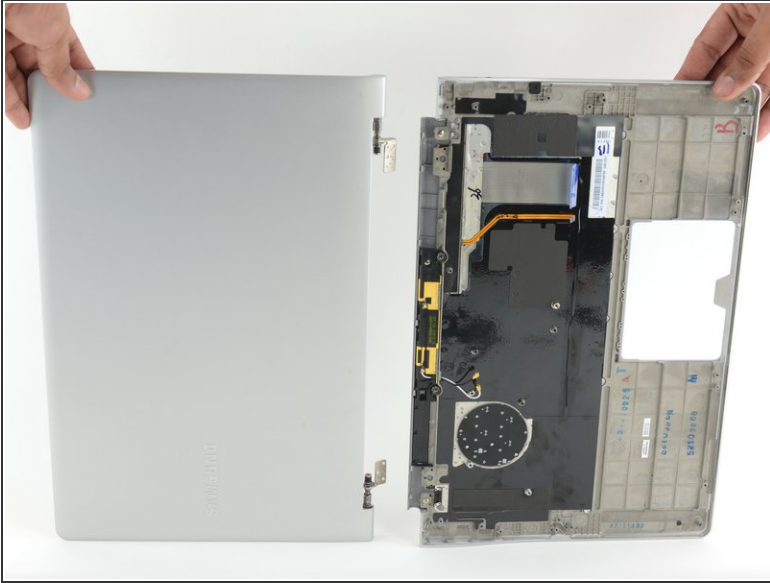
- Next up is the fan. It's secured with two screws.
- And the daughterboard. After unscrewing three Phillips screws it will not budge, so we had to break up the adhesive holding it in.

Step 7



- Motherboard removal. Pretty straightforward as long as you remember to clear the standoff pins on the far right edge.

Step 8



- Finally we remove three screws from each of the display hinges and the display assembly is free.

Step 9



REPAIRABILITY SCORE:



- The Samsung Series 9 15" earns a **9 out of 10** on our repairability scale (10 is the easiest to repair):
 - All screws are Phillips screws.
 - RAM, SSD, and battery are all easily replaced.
 - Relatively flat, modular design means that most components can be replaced quickly without having to remove other obstructions.
 - A moderate amount of adhesive on the I/O board and trackpad brackets complicates some reassembly procedures.
 - Manufacturer does not provide user-accessible repair documentation.