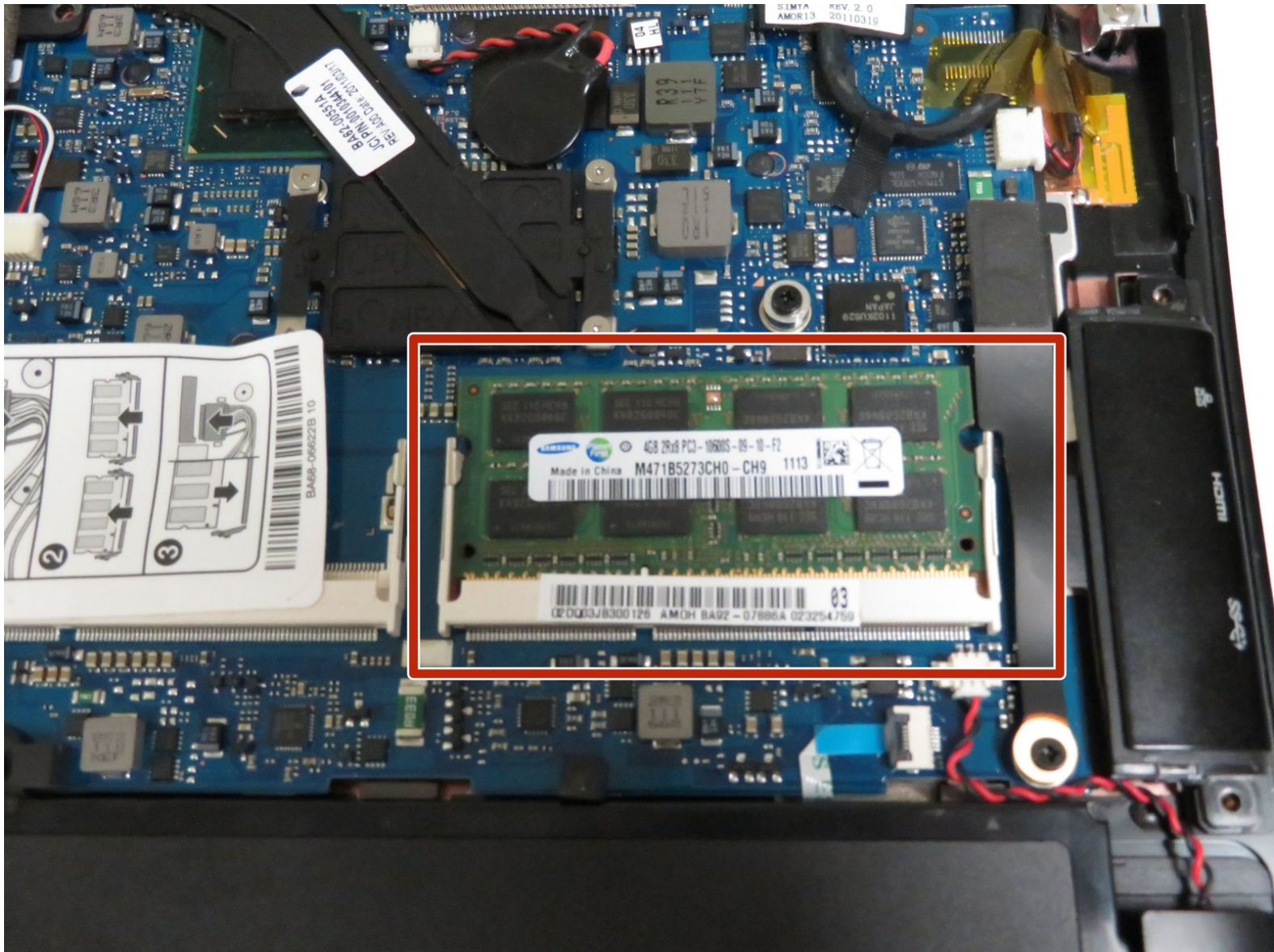




Samsung Series 9 NP900X3A RAM Replacement

This is a guide explaining how to disassemble the laptop and remove the RAM for replacement.

Written By: Noah Smith



INTRODUCTION

Random Access Memory, or RAM (pronounced as ramm), is the physical hardware inside a computer that temporarily stores data, serving as the computer's "working" memory. It is held in by 2 clips on the sides of the unit, and will pop upward when released.



TOOLS:

- [iFixit Opening Tools](#) (1)
 - [Phillips #0 Screwdriver](#) (1)
-

Step 1 — Back Panel



- Locate the rubber feet at every corner of the laptop back panel. Use the iFixit prying tool, and break the adhesive between the rubber feet, and the case.
- ⓘ Screws securing the back panel underneath the adhesive will be exposed.
- ★ Removing the rubber feet will weaken the adhesive making reassembly difficult. Apply new adhesive if you choose to place the rubber feet back on to the device.

Step 2




- Use a Phillips #0 screwdriver to remove the ten 0.2mm screws from the bottom cover.
- ⓘ Keep track of the screws and their placement on the laptop. This will help make reassembly easier and more organized.

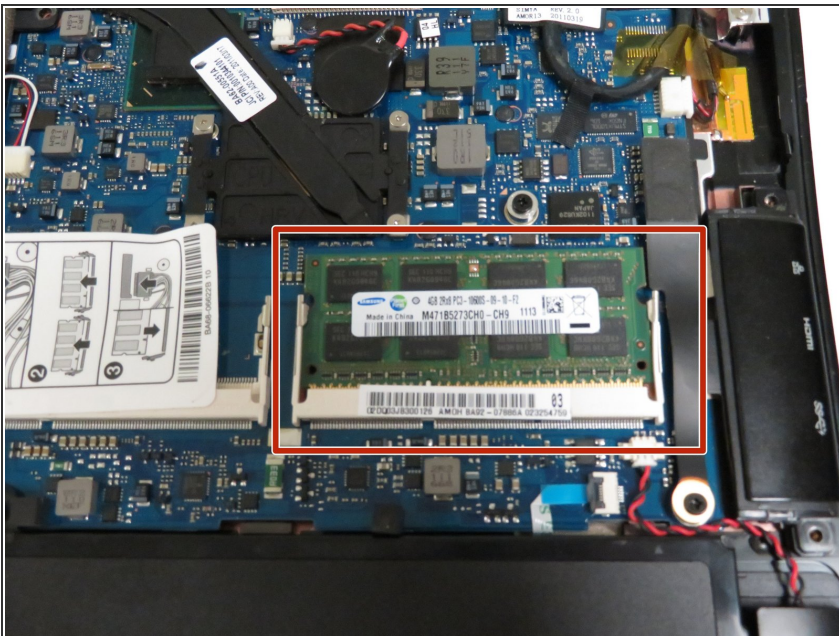
Step 3




- Find an opening on the back of the laptop. Use the plastic prying tool to help pry open the back panel of the laptop.

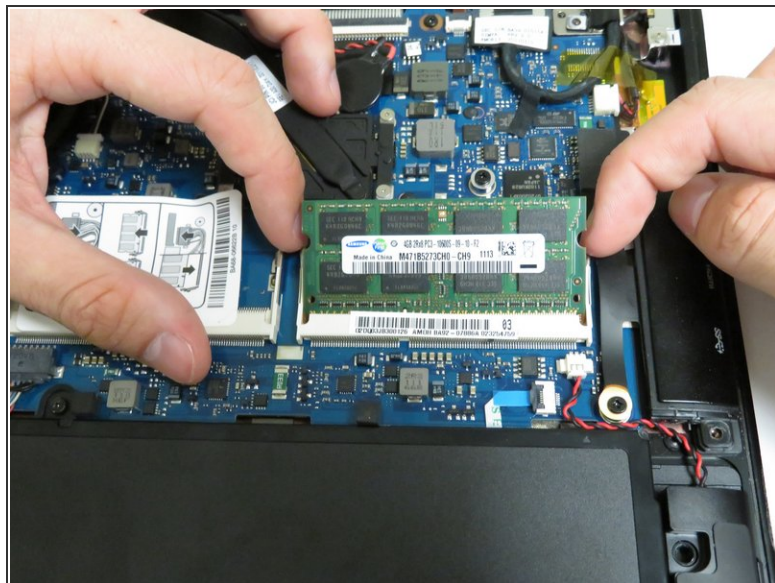
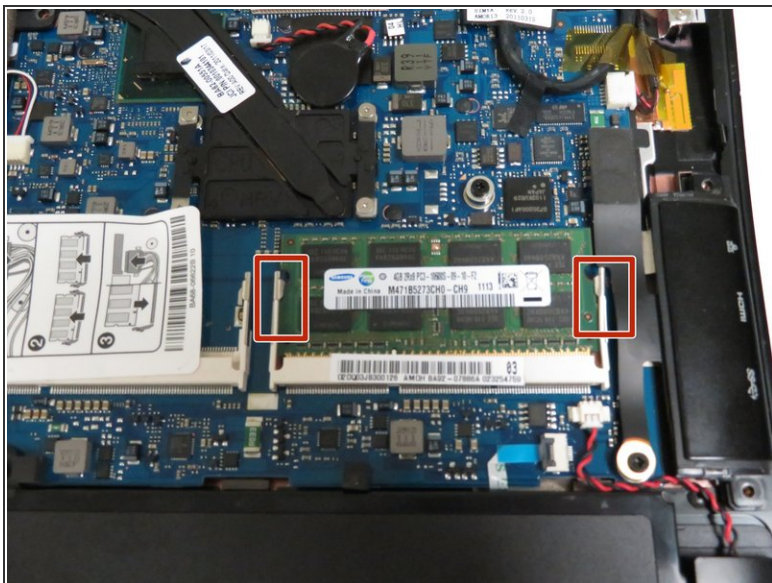
 Use both hands when removing the back case cover. Too much force will bend the cover making it difficult to reassemble.

Step 4 — RAM



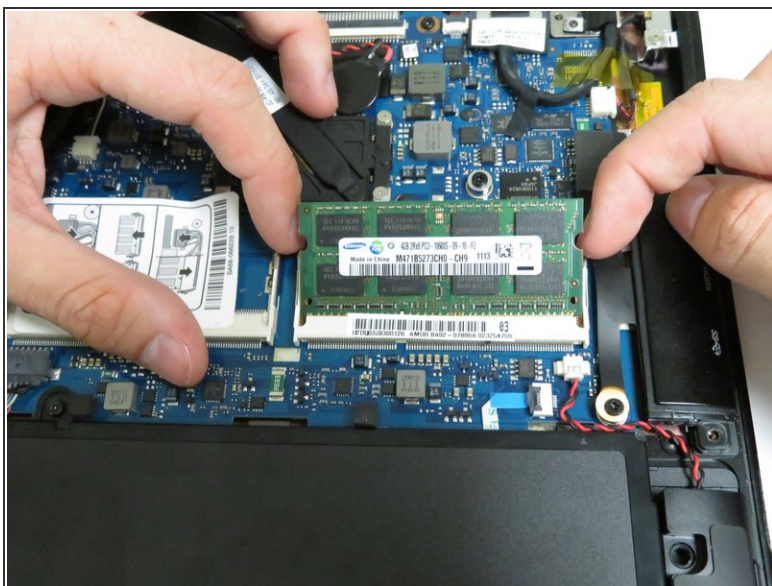
- Identify RAM slot on the top right side of the battery.
-  Note that there are 2 RAM slots. It is possible to add another RAM unit to increase performance. (Use DDR3 RAM only.)

Step 5



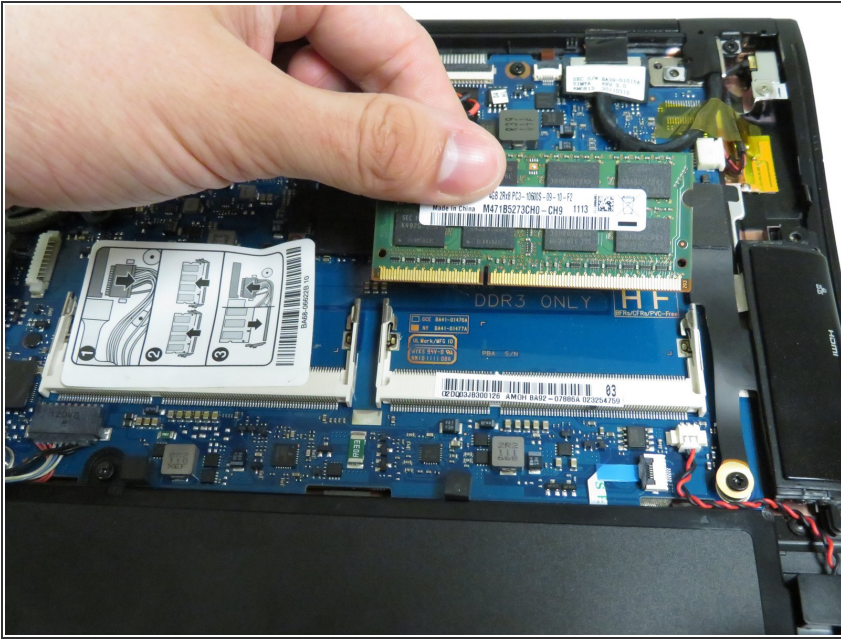
- Place your fingernail or a pry tool in between the metal retention bars and the RAM unit.

Step 6



- Use your fingernail or pry tool to pull outward on the retention bars.
- ⓘ If done correctly, the RAM unit should pop upward at a 45 degree angle.

Step 7



- Pull up on the RAM unit at a 45 degree angle to release it from the retention bars.

To insert the replacement RAM unit, follow these instructions in reverse. If RAM unit replacement does not solve your issue, you may have a defective motherboard.