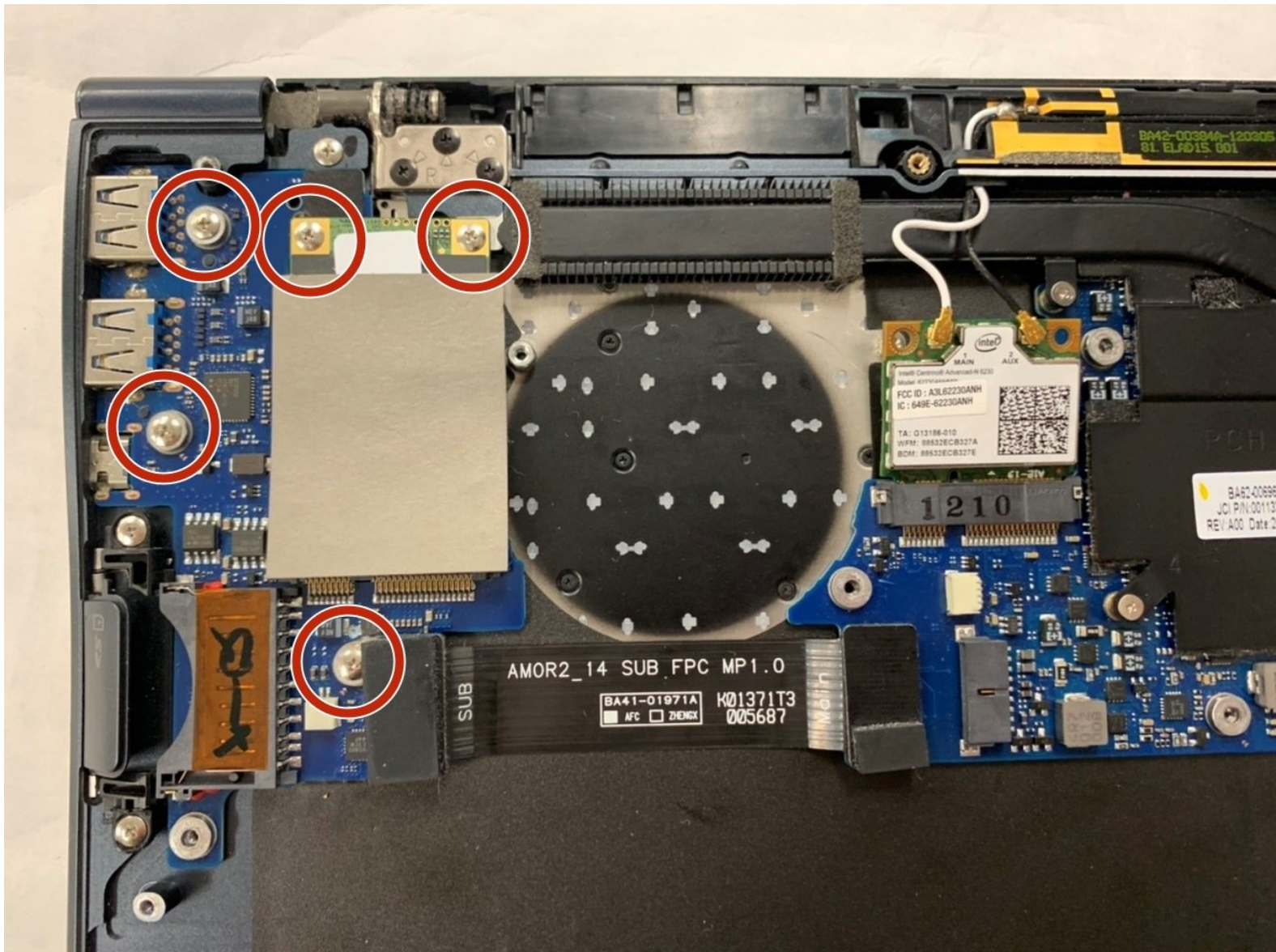




Samsung Series 9 NP900X4B-A02 I/O PCB Replacement

Remove or replace the I/O PCB in the Samsung Series 9 NP900X4B-A02 laptop.

Written By: Brady Hildreth



INTRODUCTION

Following this guide will ensure a safe and easy way to replace the Input/Output Printed Circuit Board (I/O PCB) in your Samsung Series 9 (NP900X4B-A02) laptop. No other skills are required to replace this board, which means anyone can accomplish this task.

The I/O PCB is the board that controls most of the interaction between a person and their computer. As with other circuit boards, a problem with your I/O PCB can be difficult to diagnose. Before replacing your I/O PCB, be sure that the board is the cause of the issue.

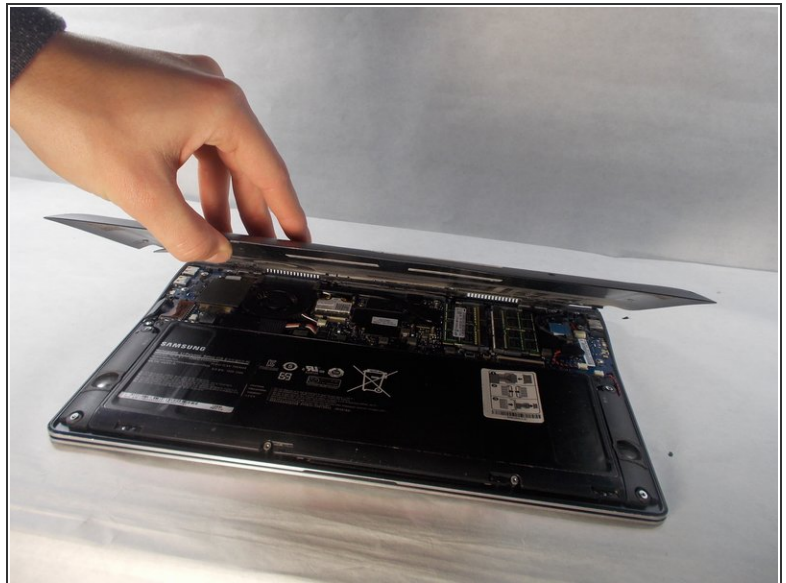
Before beginning this guide, ensure that your laptop is powered off and disconnected from its power source.



TOOLS:

- [Phillips #000 Screwdriver](#) (1)
 - [iFixit Opening Picks set of 6](#) (1)
 - [iFixit Opening Tools](#) (1)
 - [Phillips #0 Screwdriver](#) (1)
-

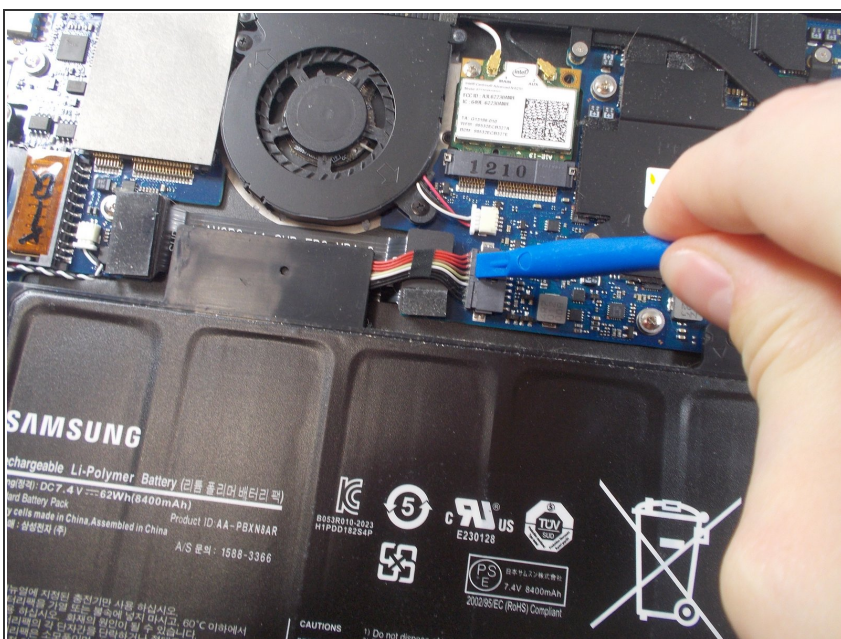
Step 1 — Battery



⚠ Ensure computer is unplugged and powered down before continuing.

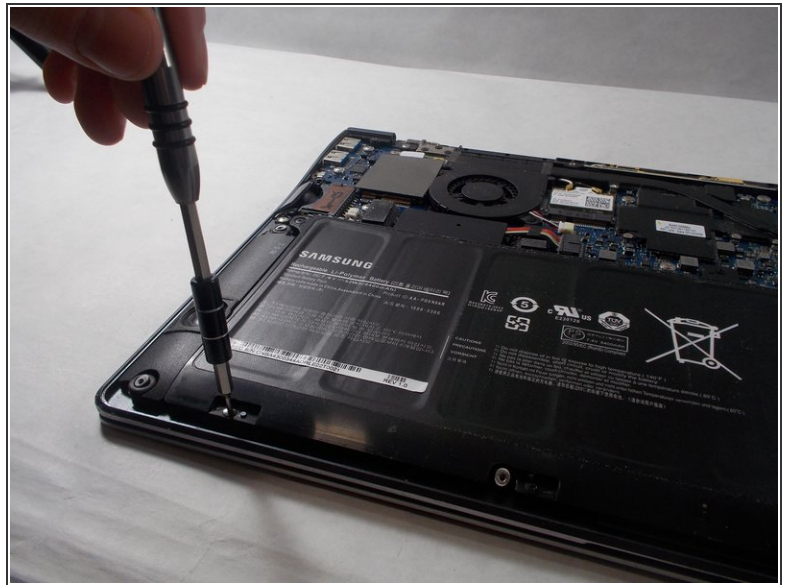
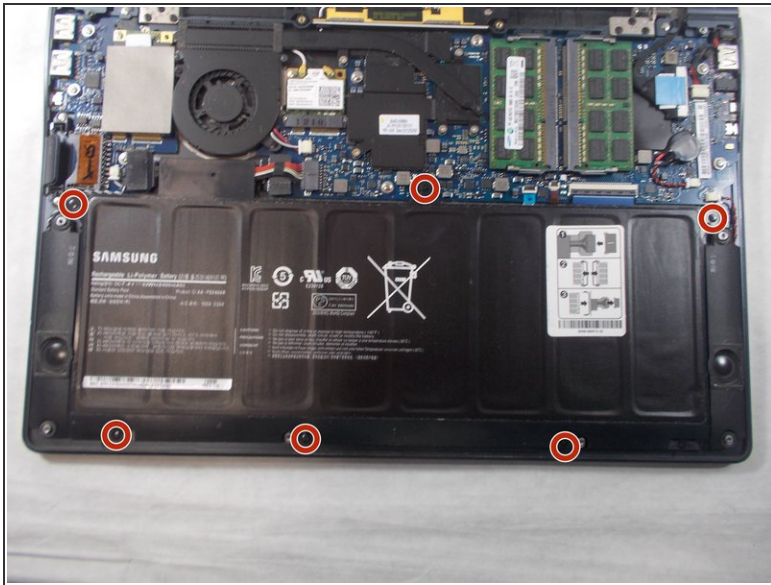
- Remove the ten screws along the base using a Phillips #000.
- Use a Plastic Opening Tool to pry open the base .

Step 2



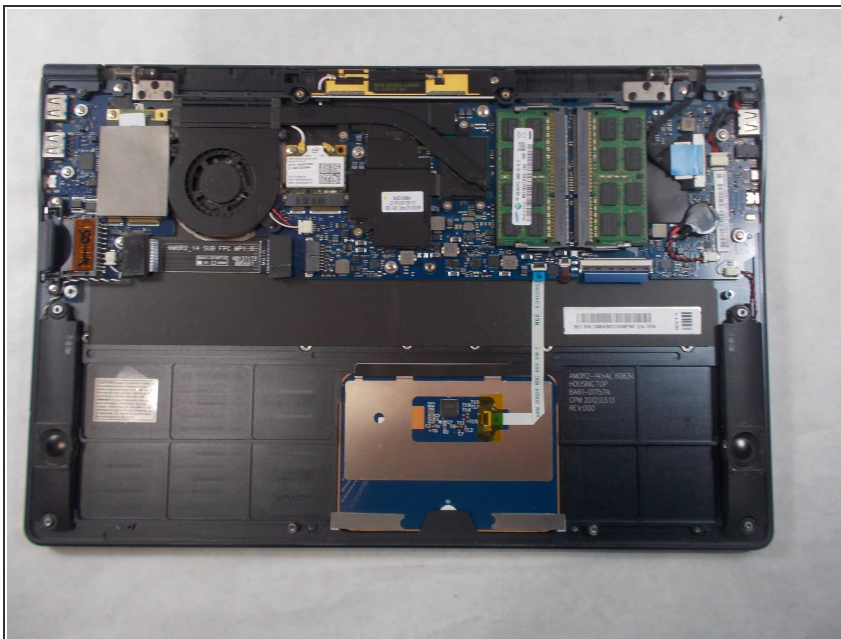
- The battery is now unobstructed from your view.
- Before removing the battery, use the plastic opening tool to detach the ribbon wire cable that connects the battery to the motherboard.

Step 3



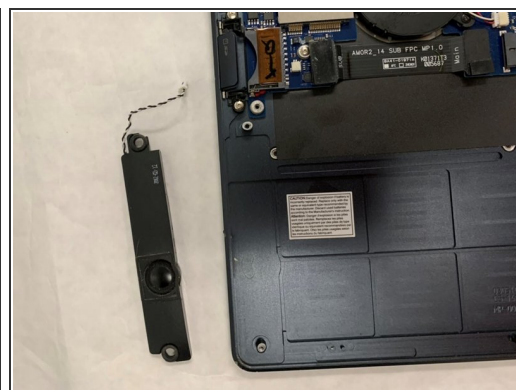
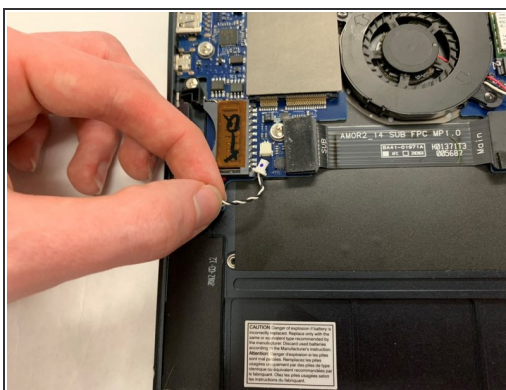
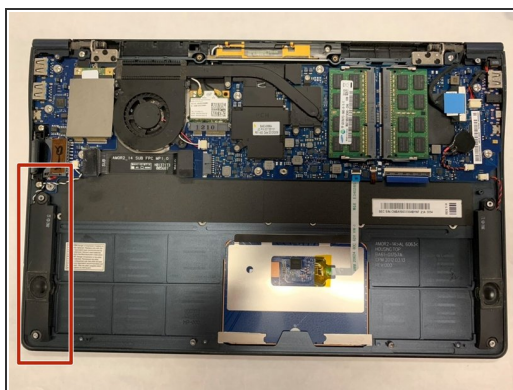
- Use the Phillips #000 screwdriver to remove six screws that are holding the battery in place.

Step 4



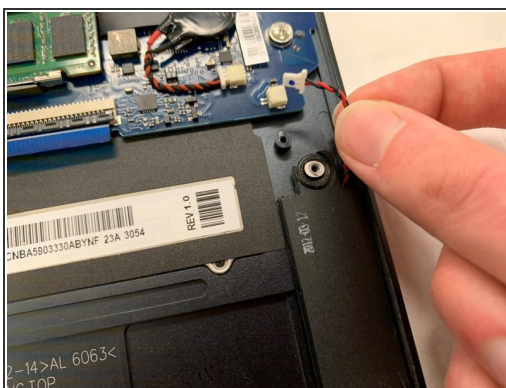
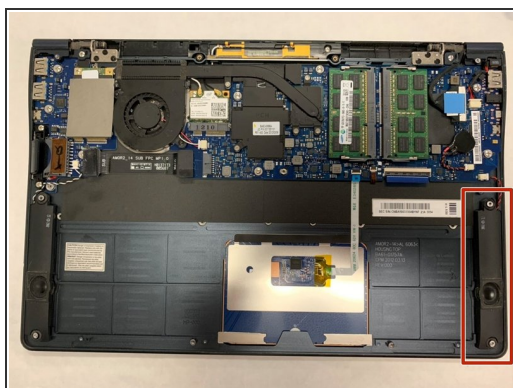
- Lift and pull out the battery.

Step 5 — Speaker



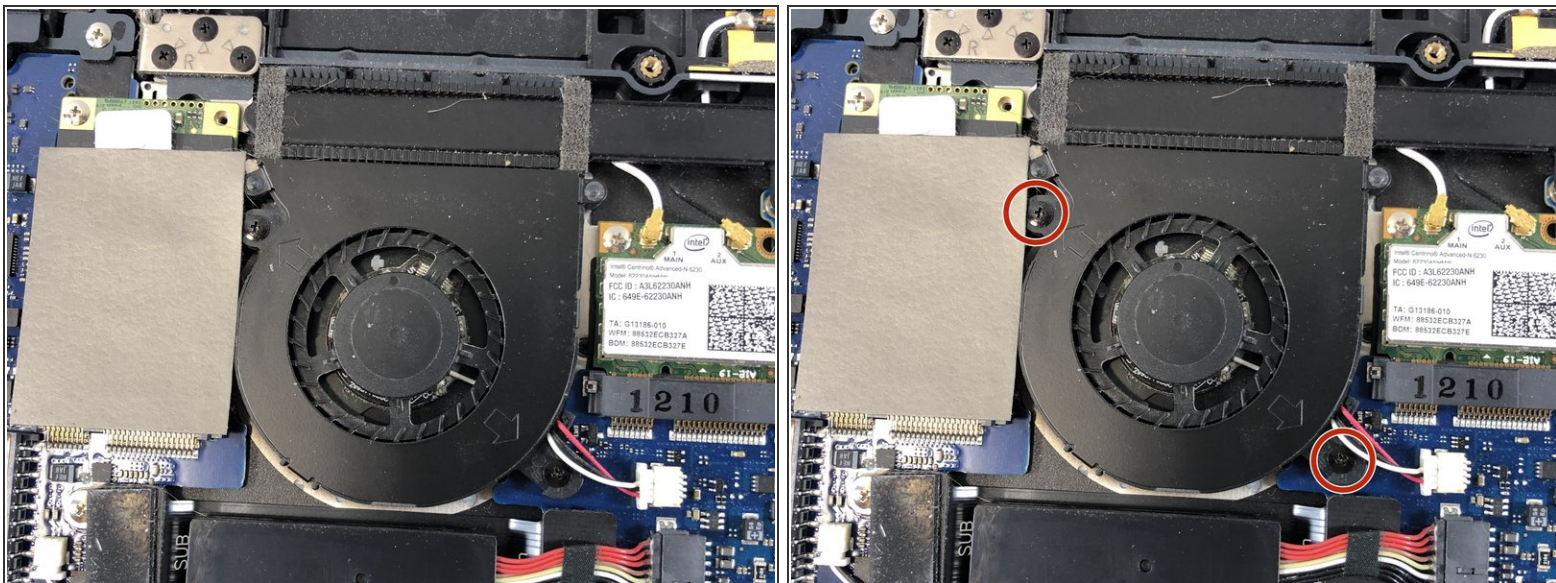
- Unplug the left speaker's cable from the motherboard.
- Lift up and remove the left speaker.

Step 6



- Unplug the right speaker's cable from the motherboard.
- Lift up and remove the right speaker.

Step 7 — Fan



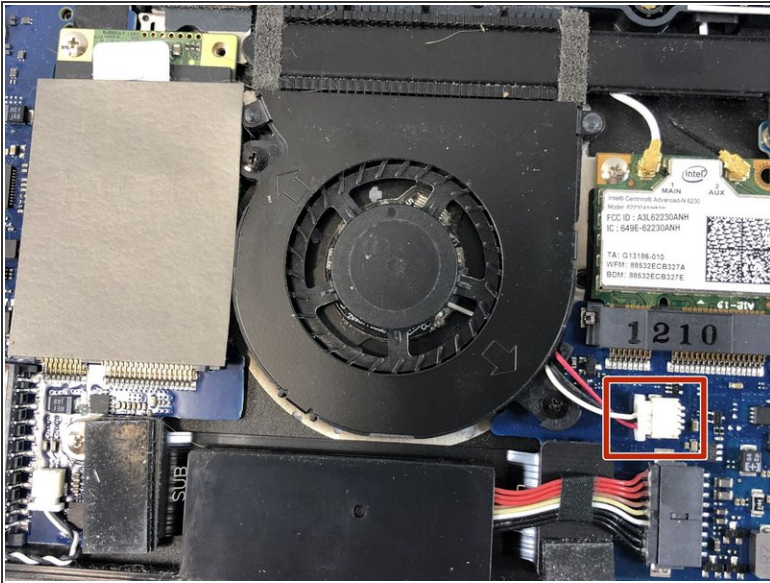
- Next locate the two Phillips #0 2.5mm screws on both the top right and bottom left corner of the fan.

Step 8



- After locating the screws, using the Phillips #0 screwdriver, remove the screws from the fan.

Step 9



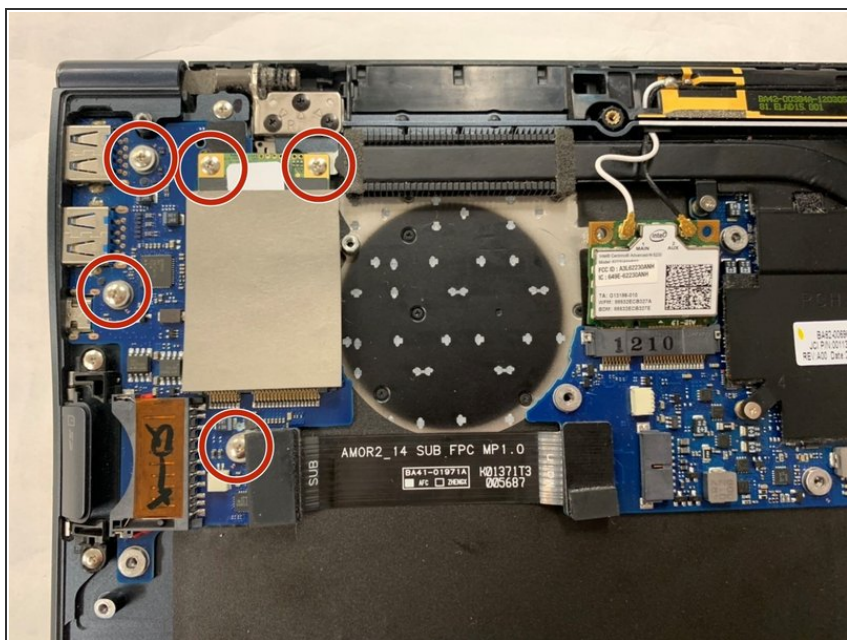
- Use the plastic opening tool to remove the cable connector from its housing which is just to the right of the fan.

Step 10



- Once the cable has been removed from its housing you are free to remove the fan from the laptop.
- You can either clean the fan with a computer duster or other cleaner, or replace it with a new one.

Step 11 — I/O PCB



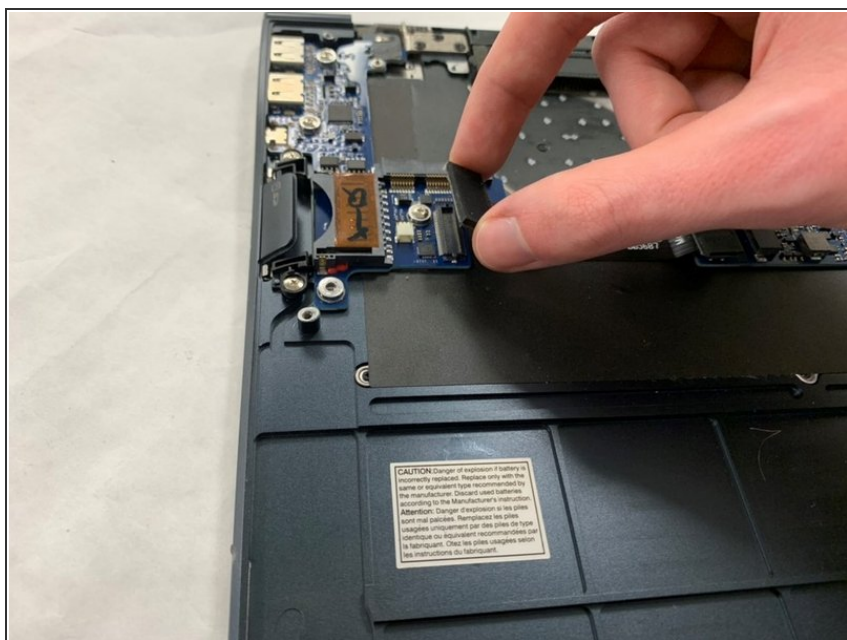
- Remove the five 2.5 mm Phillips #00 screws securing the I/O PCB.

Step 12



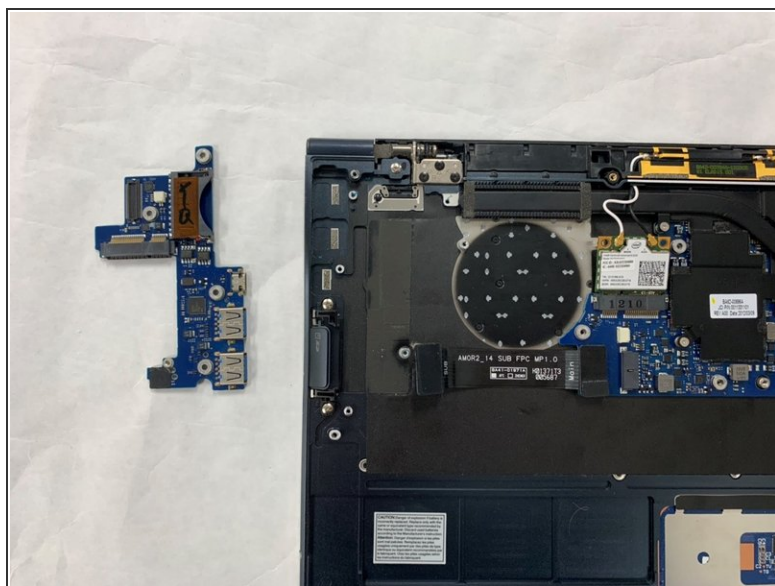
- Lift and pull the SSD from the board.

Step 13



- Disconnect the black press fit connector by gently lifting up.

Step 14



- Lift the right side of the I/O PCB and pull to the right to remove it from the laptop casing.

To reassemble your device, follow these instructions in reverse order.