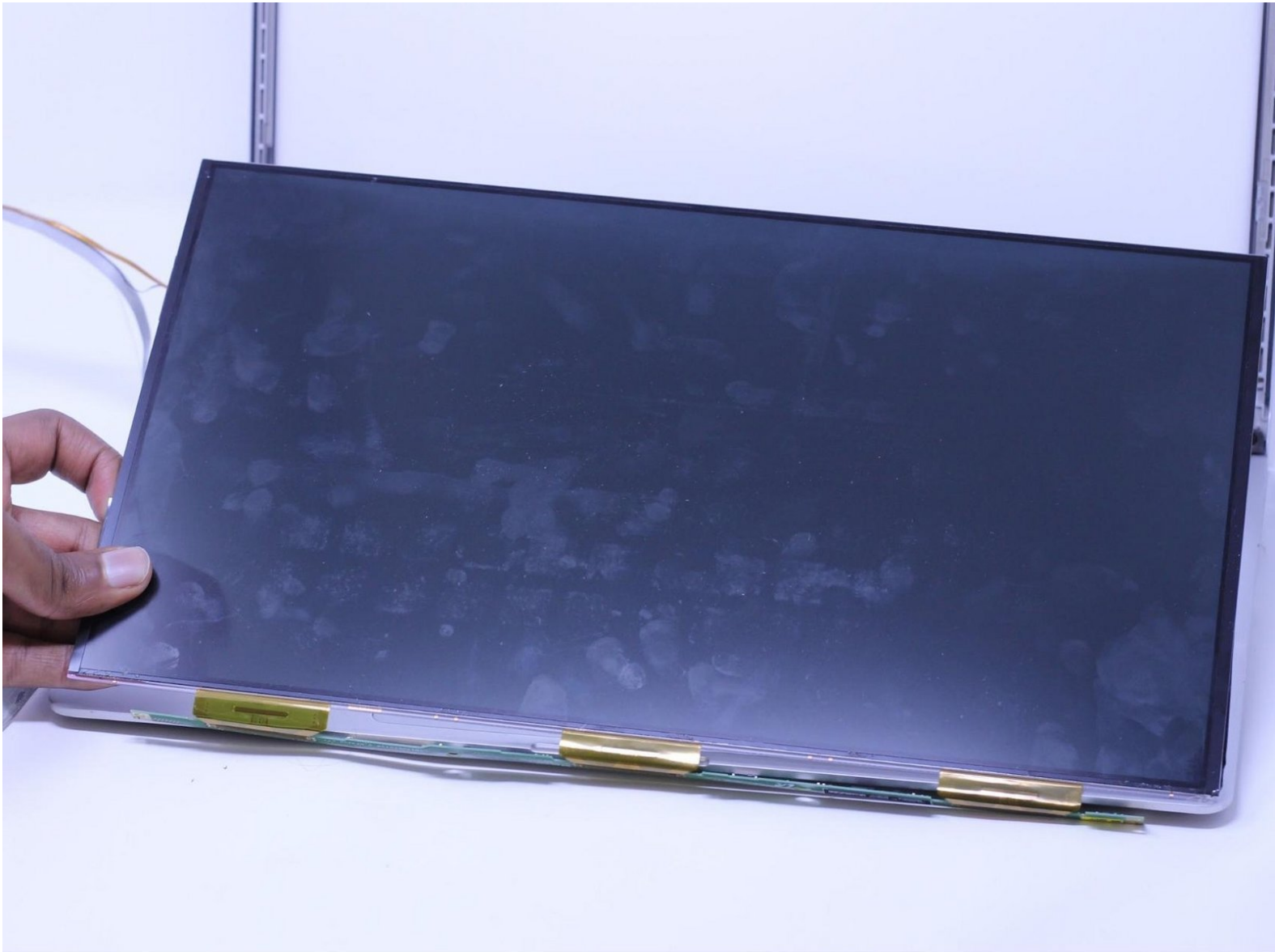




# Samsung Series 9 NP900X4D-A03US Display Replacement

How to replace a Samsung Series 9 NP900X4D-A03US display.

Written By: John



---

## INTRODUCTION

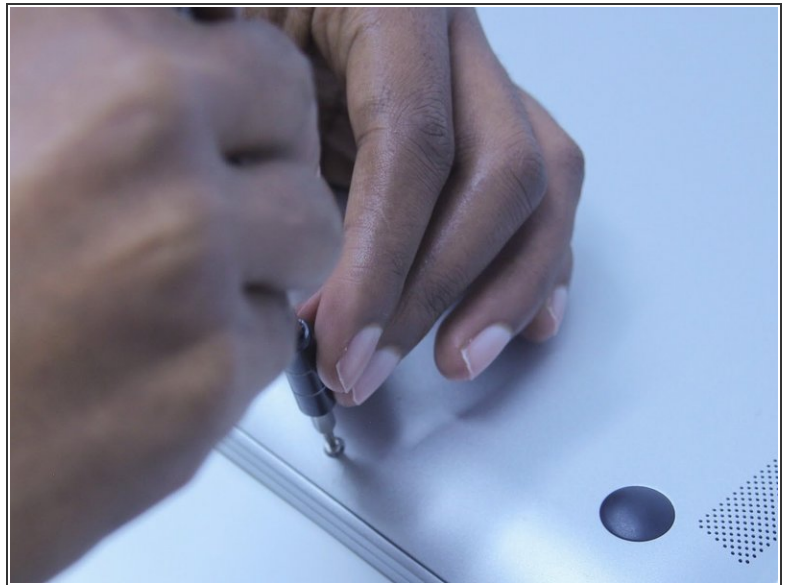
In this guide, we will be showing you how to replace the display on the Samsung Series 9 NP900X4D-A03US. We begin by removing the adhesive frame from the display, unscrewing the screws holding the display in place, and detaching the cable that keeps it intact.



### TOOLS:

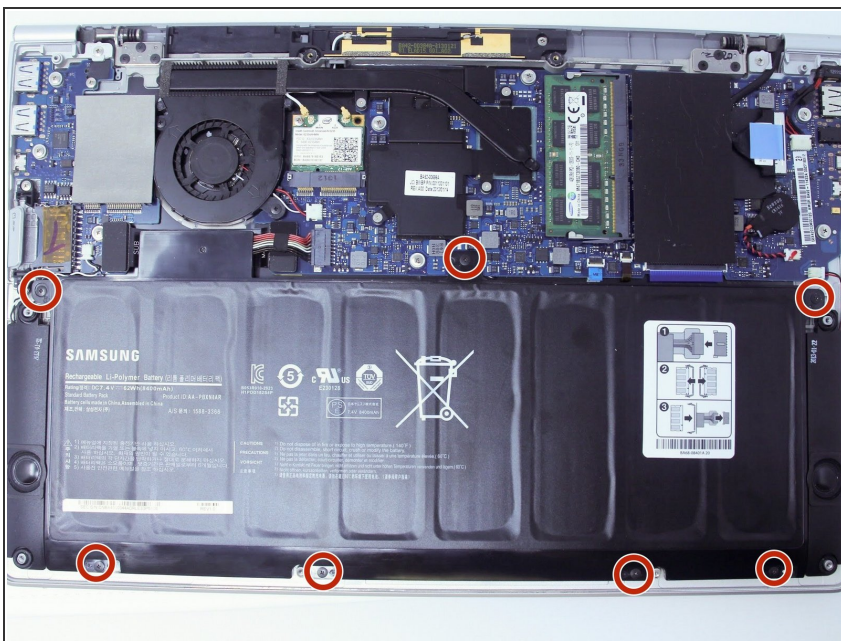
- [iFixit Opening Tools](#) (1)
  - [Spudger](#) (1)
  - [Phillips #00 Screwdriver](#) (1)
  - [Tweezers](#) (1)
-

## Step 1 — Battery



- Use the screwdriver to remove the ten 2.5mm Phillips #00 screws.
- Use an iFixit opening tool to carefully remove the back panel from the laptop.

## Step 2



- Remove the seven 0.5 mm Phillips #00 screws.

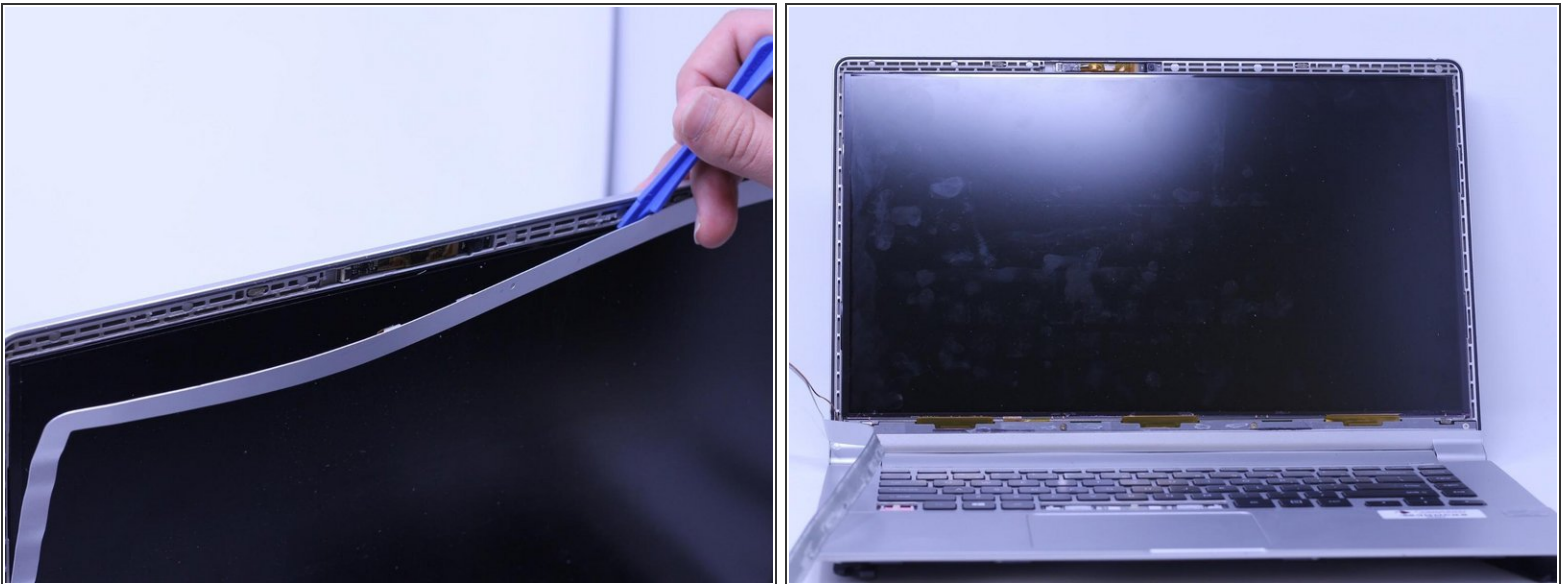


## Step 3



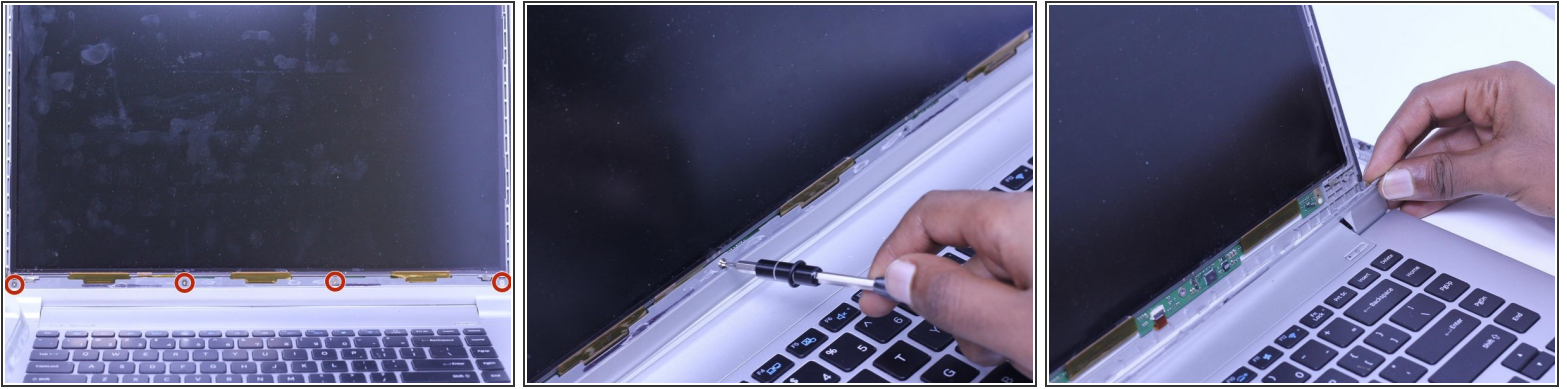
- Lightly place some pressure into the highlighted cavity on the battery's outlet plug with a spudger.
- Carefully remove the wires from the outlet plug.
- Now you will be able to remove the battery from its place.

## Step 4 — Display



- Using tweezers, gently remove the adhesive surrounding the cover. At the same time, gently pry the cover off of the display using an iFixit opening tool.
- Gently place the cover to the left, as a wire is still attached.

## Step 5



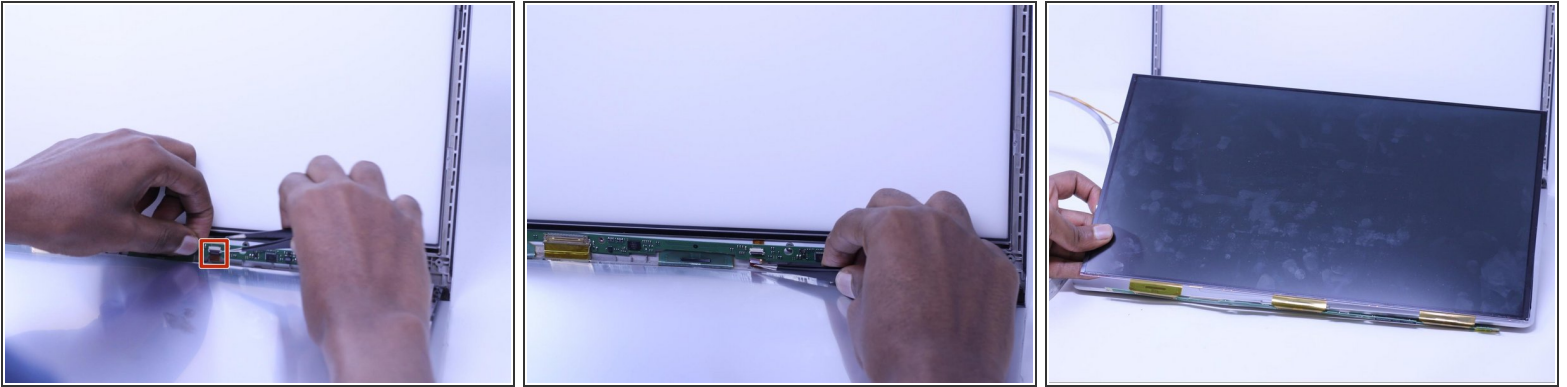
- Use the Phillips #00 screwdriver to unscrew the four 2.5mm screws.
- Gently remove the tabs from each corner.

## Step 6



- Use the iFixit opening tool to detach the screen from the frame.
  - Slowly lay the screen down on the keyboard.
- ⚠ Be careful not to lift or tug on the display since a wire is still connected.

## Step 7



- Using tweezers, slowly remove the connected wire from the display.
- Gently remove the display from the device.

To reassemble your device, follow these instructions in reverse order.