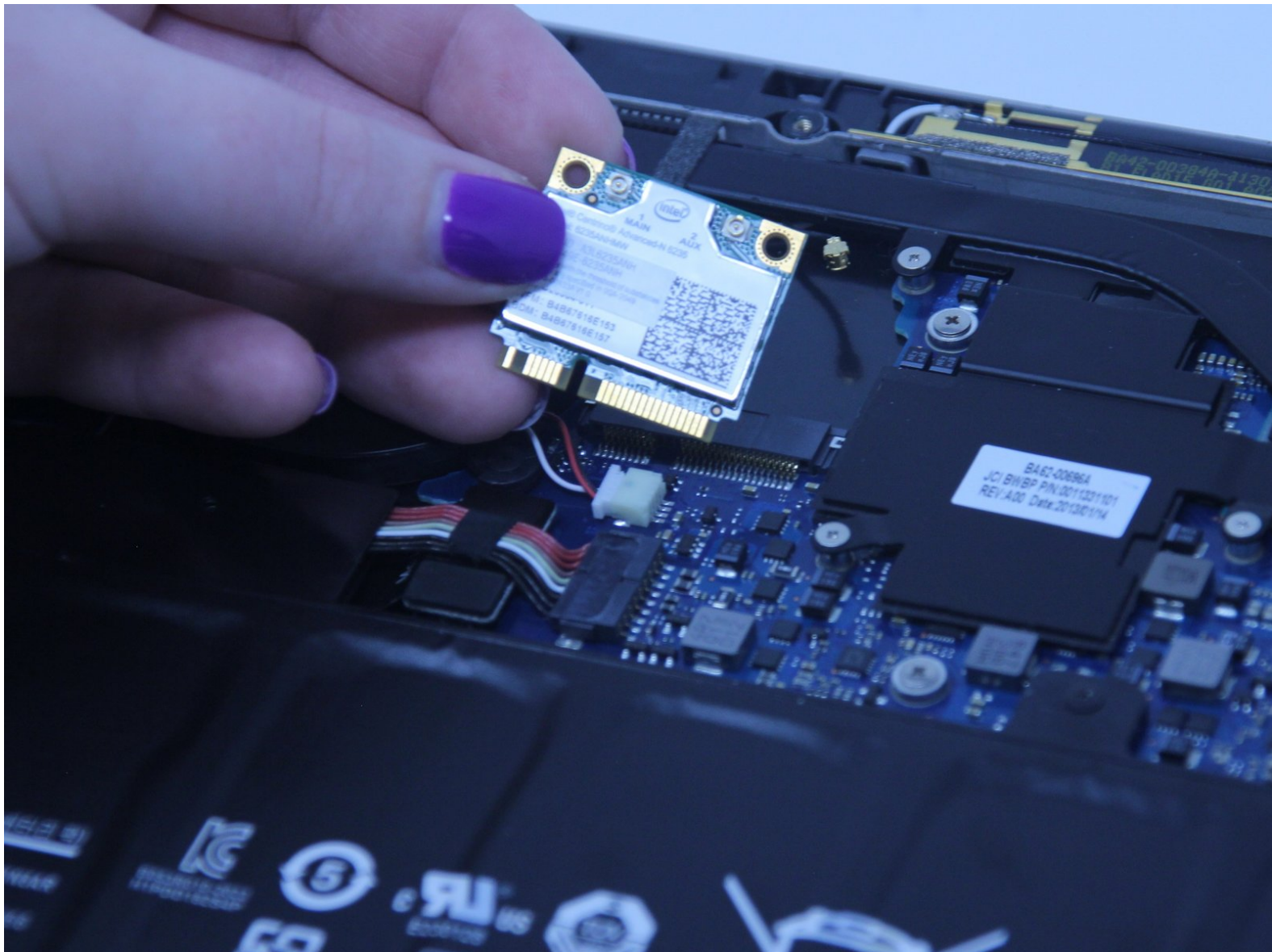




# Samsung Series 9 NP900X4D-A03US WiFi Card Replacement

This guide will show you how to replace the WiFi card for the Samsung Series 9 NP900X4D-A03US laptop.

Written By: Aimee Young



---

## INTRODUCTION

The WiFi card enables you to access the internet wirelessly and on-the-go, instead of being connected to an Ethernet cable. If your WiFi card is broken or malfunctioning, it will need to be replaced.



### TOOLS:

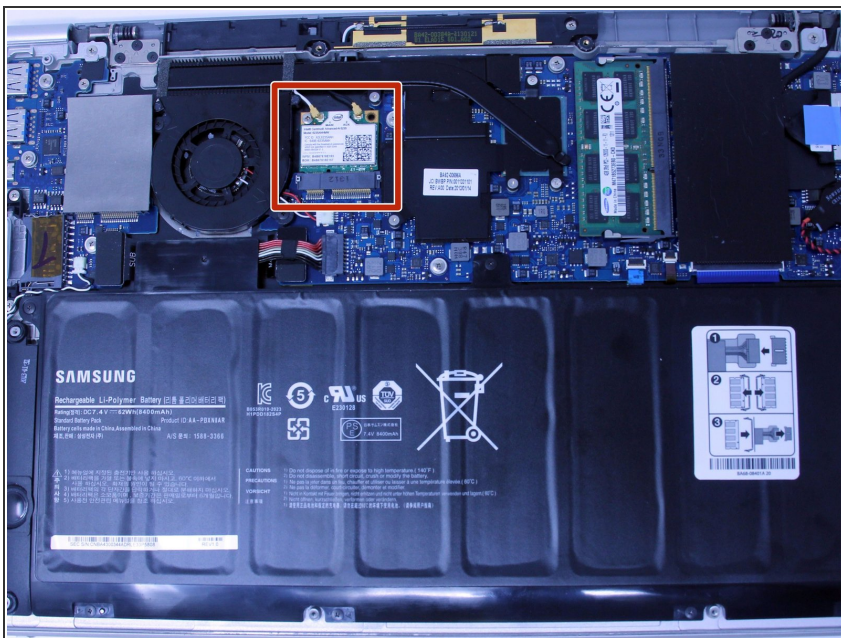
- [Phillips #00 Screwdriver](#) (1)
  - [Spudger](#) (1)
-

## Step 1 — WiFi Card



- Use the screwdriver to remove the ten 2.5mm Phillips #00 screws.
- Remove the back panel of the laptop.

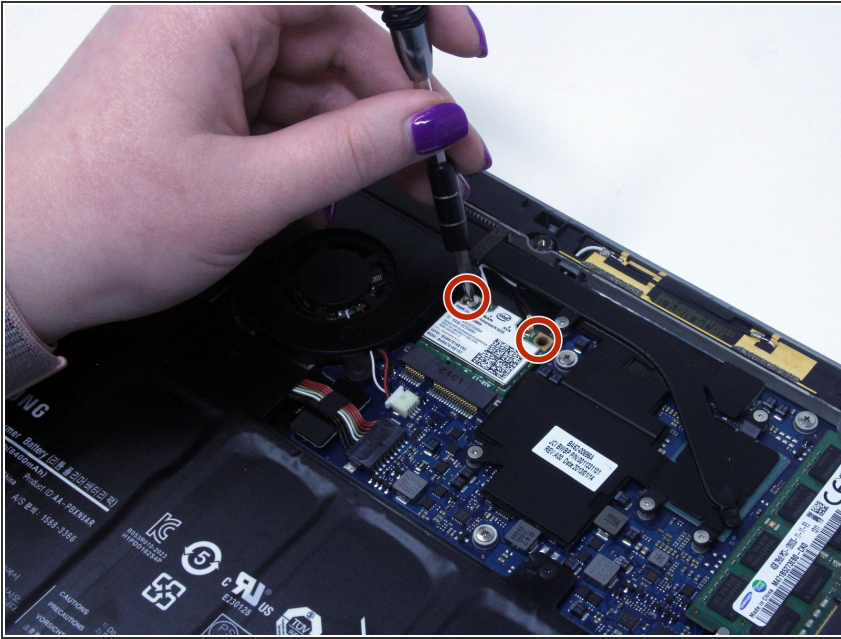
## Step 2



- Locate the WiFi card once you've removed the back panel.

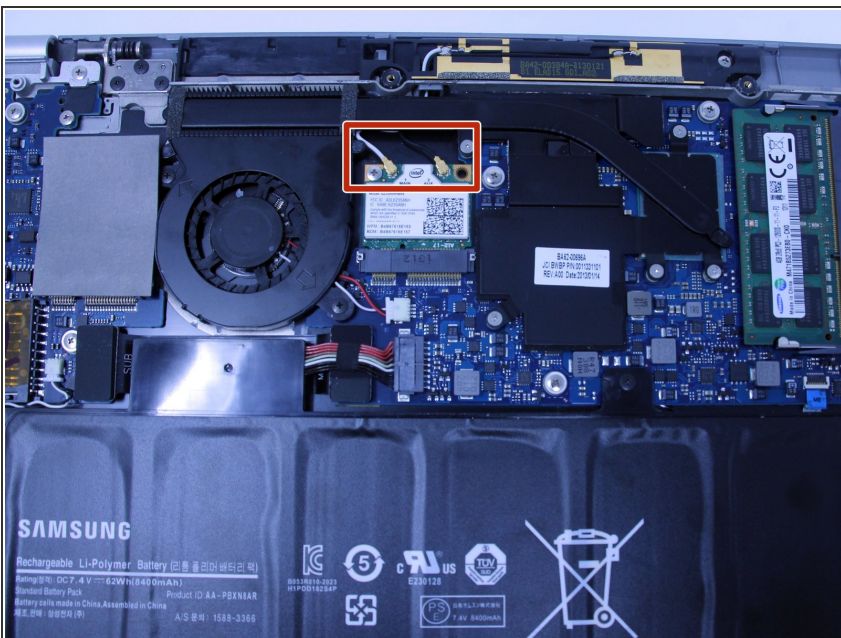


## Step 3



- Remove the two 2.5 mm Phillips #00 screws.

## Step 4



- Remove the two wires connected to the WiFi card using a nylon spudger.

## Step 5



- Gently lift up the WiFi card to remove it.

To reassemble your device, follow these instructions in reverse order.