



# Samsung SmartCam HD Mount Replacement

This guide will walk you through the steps of how to remove your mount on the Samsung SmartCam.

Written By: Christopher Michael Tartaglia



## INTRODUCTION

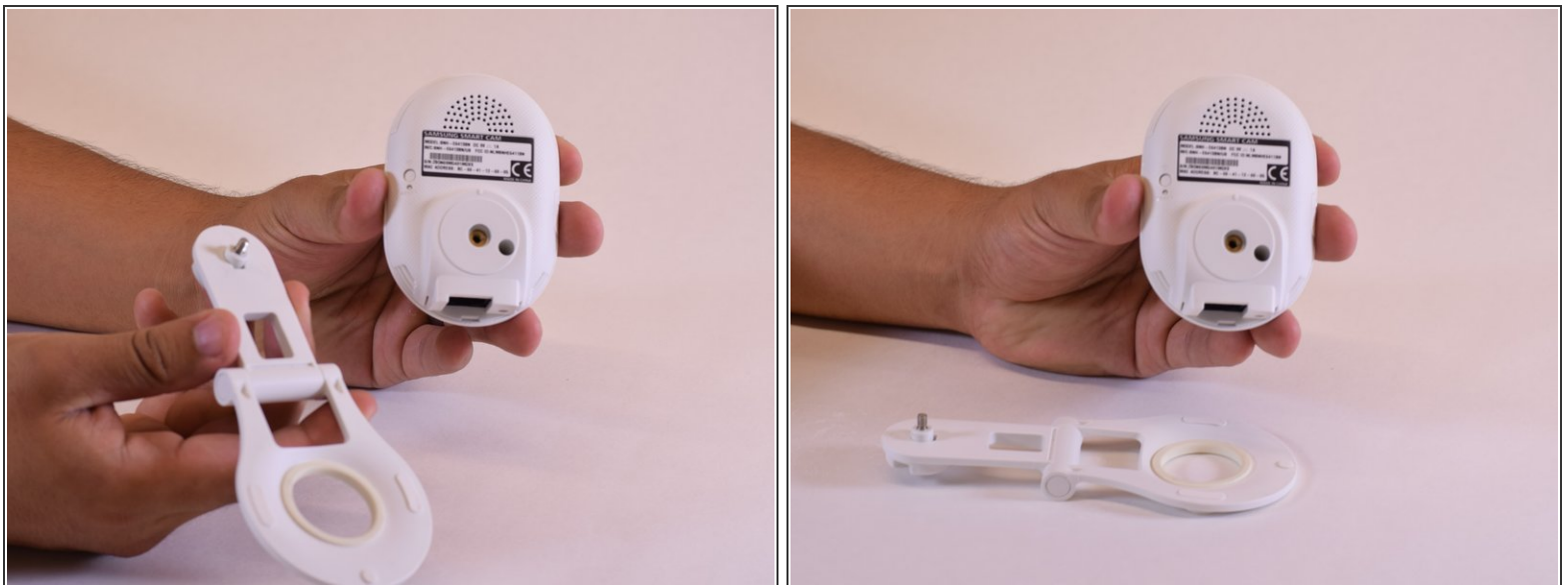
This guide will walk you through the steps of how to remove your mount on the Samsung SmartCam.

## Step 1 — Mount



- Rotate the mount counter-clockwise, 7-8 times or until the clip is loose.

## Step 2



- Separate the mount from the camera and set the mount aside.

To reassemble your device, follow these instructions in reverse order.