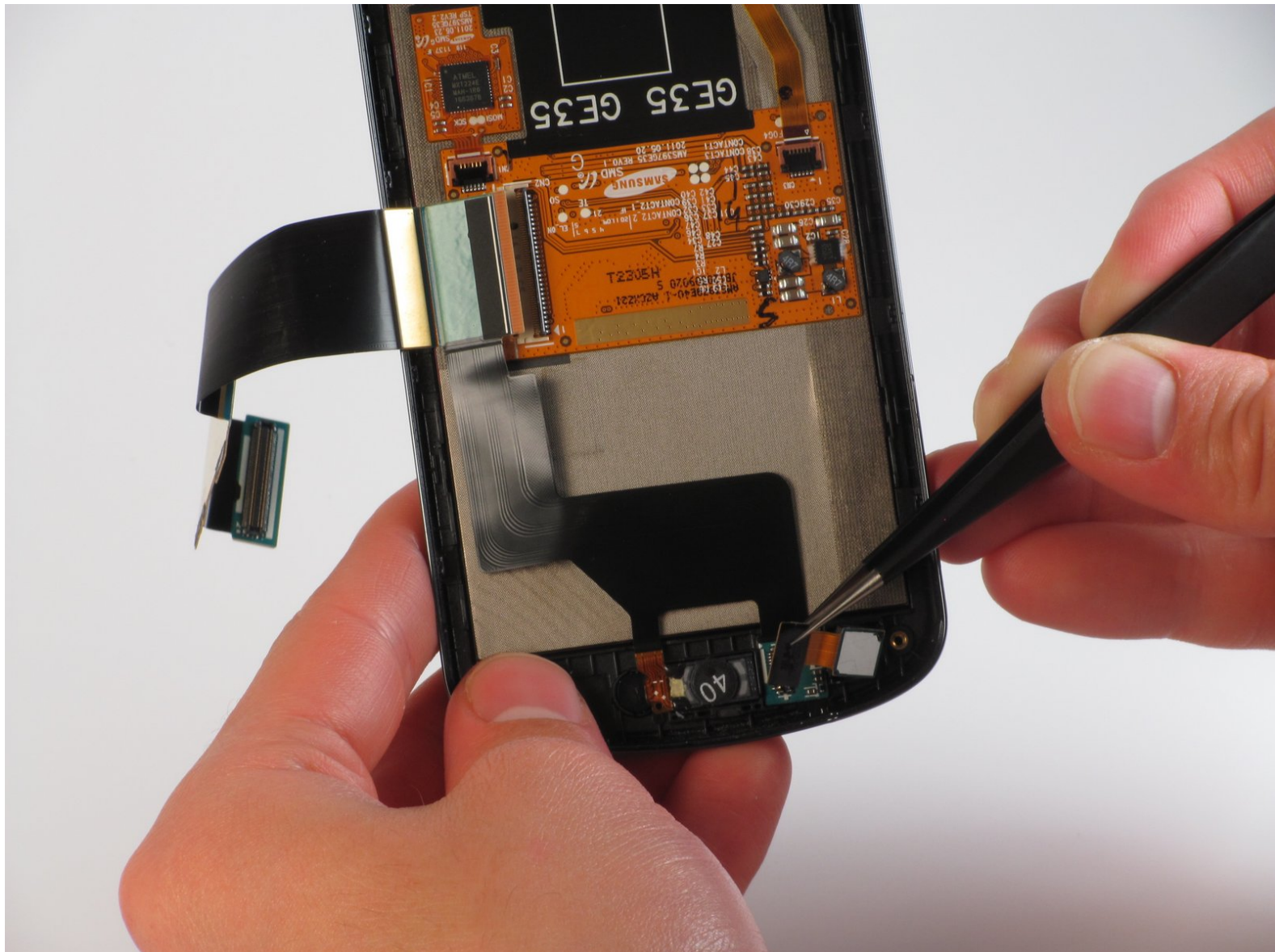




Samsung Stratosphere Front Camera Replacement

This guide will teach you how to replace the front camera on the Samsung Stratosphere.

Written By: Ryan



INTRODUCTION

The front camera is on the same side as the phone's screen and is the only camera used to Skype on the Samsung Stratosphere.

TOOLS:

- [Tweezers](#) (1)
 - [iFixit Opening Tools](#) (1)
 - [Phillips #000 Screwdriver](#) (1)
-

Step 1 — Battery



- Using your fingers, pry along the groove at the top of the phone.
- Pull back on the rear casing until it comes free from the device.
- The casing will make a cracking sound as it is removed.

Step 2



- With your fingers, pry from the bottom of the battery to loosen it.
- Lift away to remove the battery from the phone.

Step 3 — Motherboard



- Locate the red and white sim card located above the battery housing.
- Remove the sim card by sliding it downwards from its slot with your fingers.

Step 4



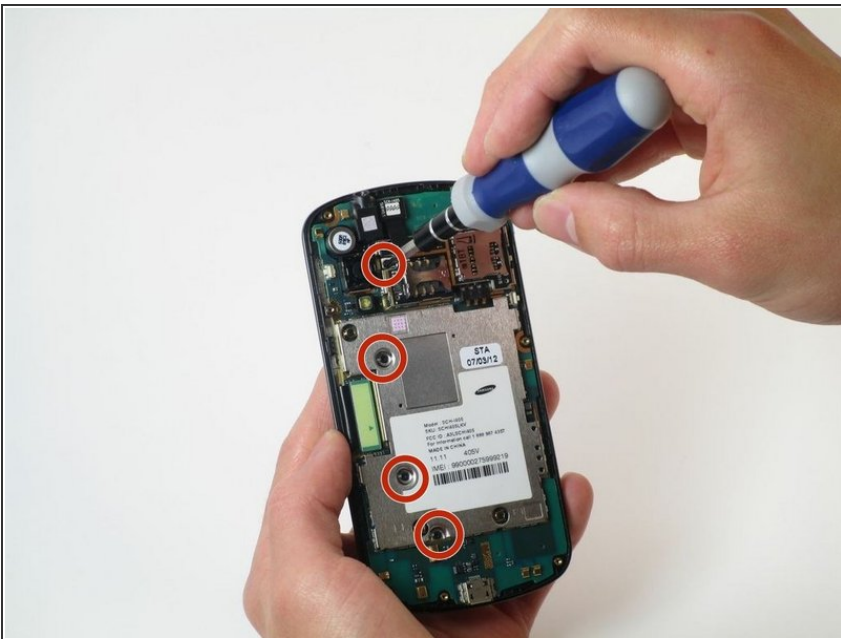
- Remove the seven silver 3mm screws securing the rear panel using the Phillips #000 screwdriver.
- ⓘ Once loosened, some screws may get stuck in the casing. Use tweezers to remove them.

Step 5



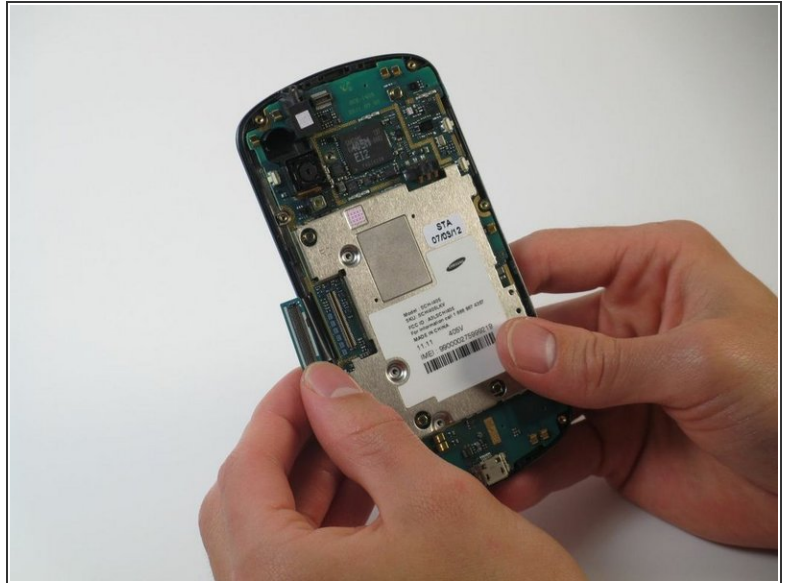
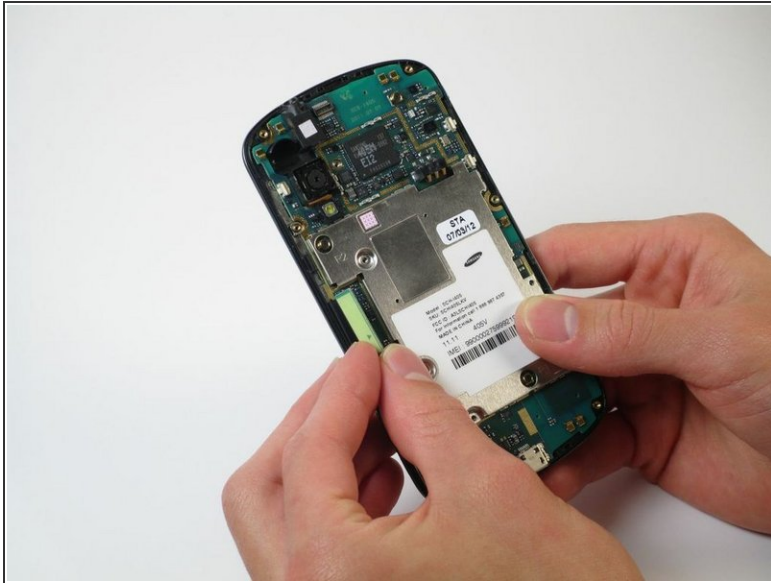
- Pry around the rear panel with a plastic opening tool to loosen it.
 - ⚠ Prying too deeply may damage delicate components inside the phone.
- Remove the rear panel from the phone with your fingers.

Step 6



- Remove the four black 3mm screws securing the motherboard with the Phillips #000 screwdriver.

Step 7



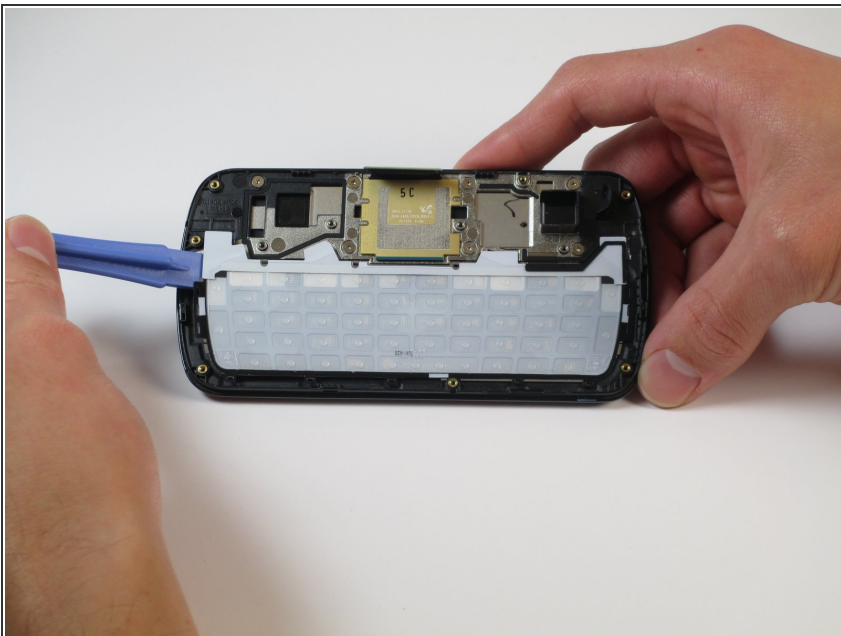
- Locate the flex cable attachment at the tab with a green arrow printed on top.
- Pry from the side the arrow is pointing with your fingers.
 - The cable will audibly snap as it is removed from its attachment.
- Let the cable hang loosely to the side of the phone.

Step 8



- Pull the motherboard up from the side opposite the loose flex cable.
- ⓘ If necessary, use a plastic opening tool to separate the motherboard from the key pad underneath.
- Lift to remove the motherboard from the device.

Step 9 — Front Camera



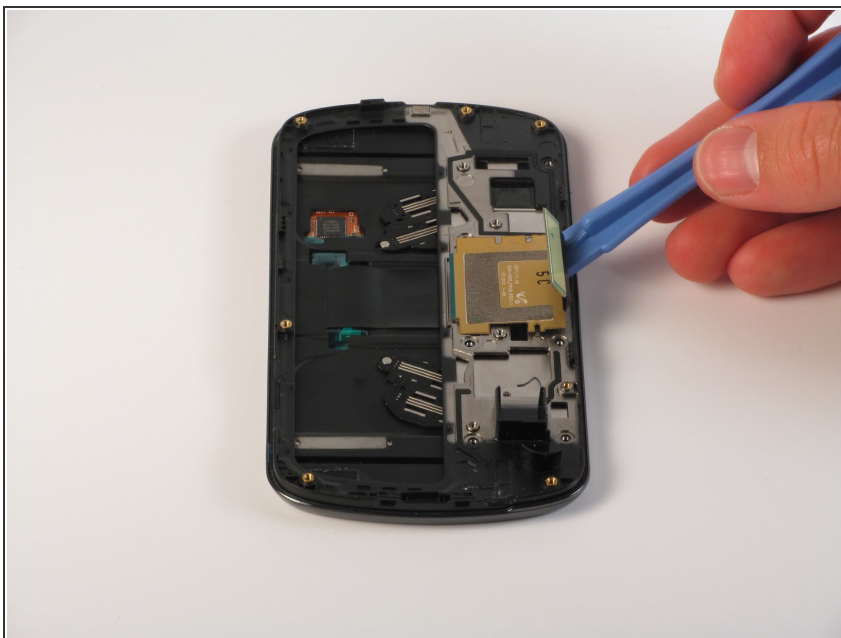
- Insert a plastic opening tool into any side of the phone case to separate the keyboard from the rear panel.
- Pry the keyboard away from the casing with the plastic opening tool.
- ⓘ The keyboard should come off with almost no force at all.

Step 10



- Remove the 7 silver 2mm screws attaching the silver metal plate to the rear panel with the Phillips #000 Screwdriver.

Step 11



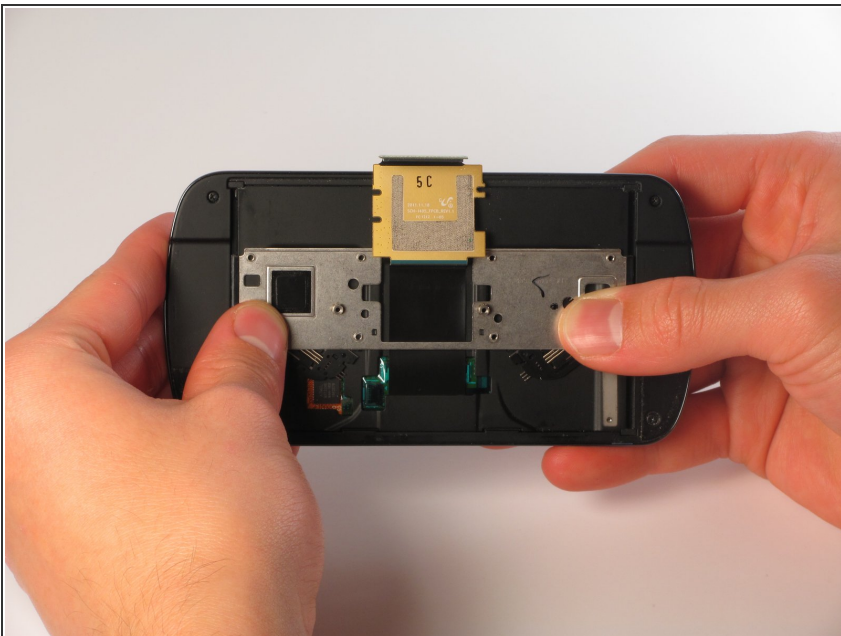
- Use the plastic opening tool to carefully loosen the golden metal plate.
- ⓘ The golden metal plate is stuck to the rear panel with a strong adhesive, so a moderate amount of force may be needed.

Step 12



- Lift the gold plate with your fingers, repositioning it to slide through the keyboard casing underneath.
- Carefully take off the keyboard casing with your fingers.
- The golden metal plate should fit through the wide slot of the casing.

Step 13



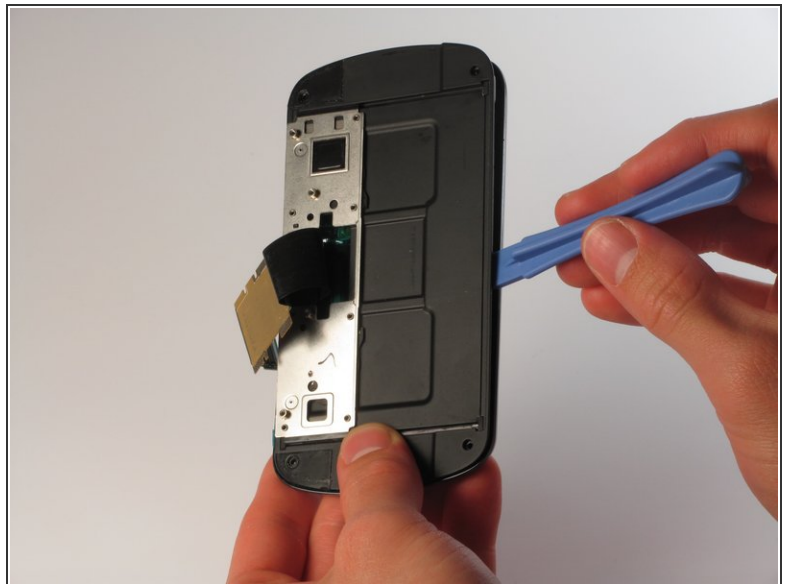
- Slide the silver metal plate down and away from the to the flex cable and gold metal plate.
- ⓘ The metal plate is attached to springs that offer a small amount of resistance, so it will snap into place.

Step 14



- Unscrew the 4 black 3mm screws from the rear panel with the Phillips #000 Screwdriver.

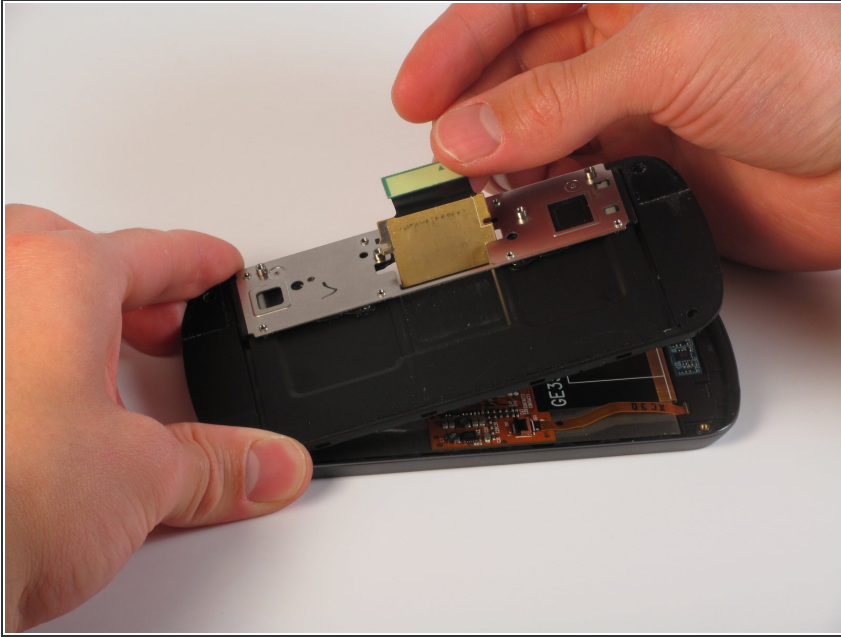
Step 15



- Insert the plastic opening tool into the groove at the top of the rear panel.
 - Firmly slide the plastic opening tool all around the rear panel. The panel will audibly snap as it comes apart.
- i** These 2 pieces are attached well, so a significant amount of force is needed to separate them.

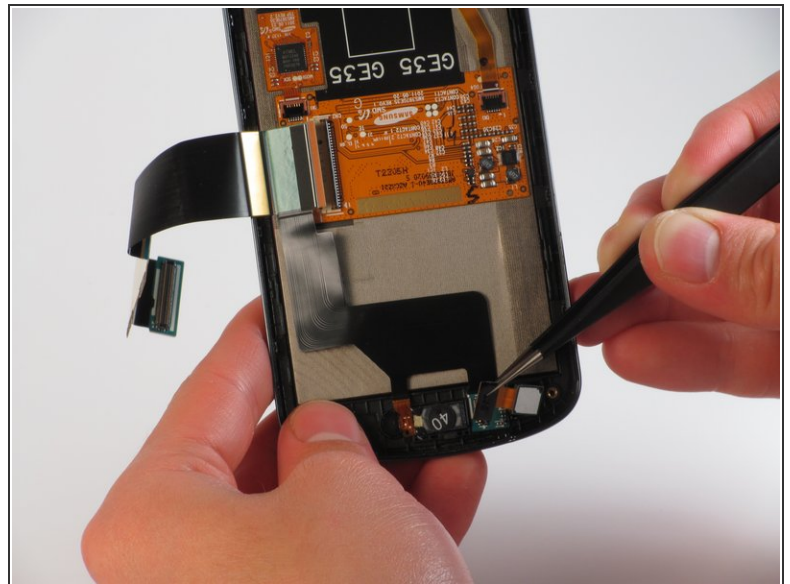
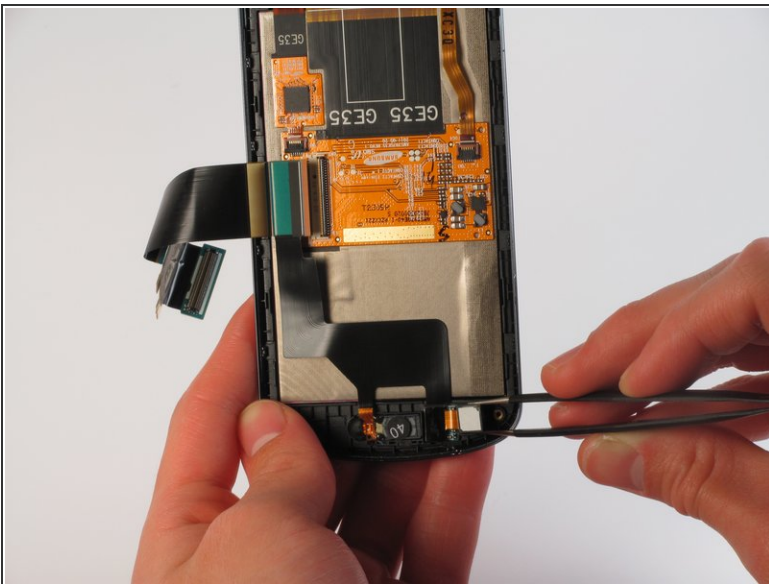
This document was generated on 2019-10-13 05:08:10 PM (MST).

Step 16



- Lift the flex cable and position it so the part containing the metal plate can come free.
- Pull the part containing the metal plate away from the rest of the rear panel.

Step 17



- Use tweezers to loosen the front-facing camera from the plastic casing.
- Pull the black rectangular piece, attached to the front facing camera, away from the rear panel.

To reassemble your device, follow these instructions in reverse order.