



Samsung Sway Motherboard Replacement

This guide will show you how to replace the motherboard. It will also show you how to open up the phone to get to the internal componets of the phone.

Written By: Chris Rush



INTRODUCTION

This will help you replace the motherboard of the phone to fix a hardware problem.

TOOLS:

- [Phillips #00 Screwdriver](#) (1)
 - [iFixit Opening Tools](#) (1)
 - [Tweezers](#) (1)
-

Step 1 — Motherboard



- Using your thumb(s) slide the cover up to remove
- Remove the battery by using your finger either in the upper left or right corner

Step 2



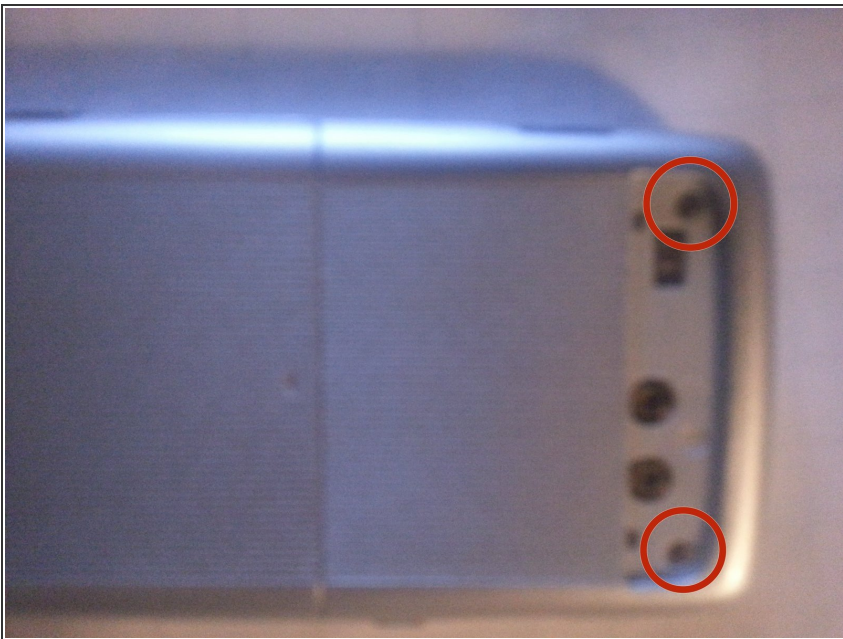
- Unscrew the four corner .4cm Phillips head screws.

Step 3



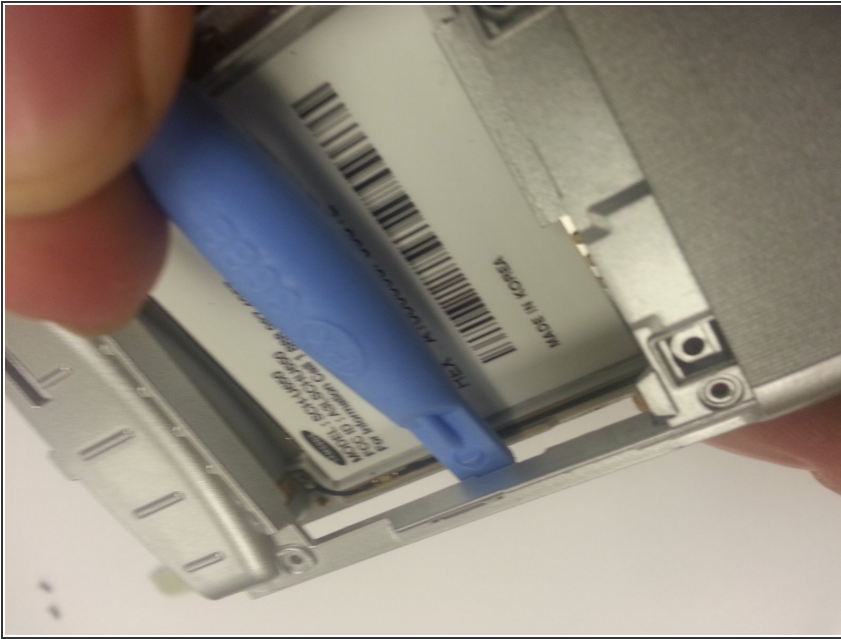
- Using a pair of tweezers gently insert them under the Samsung logo on the bottom of the phone.

Step 4



- Unscrew the two .4 cm Phillips head screws from under the Samsung logo

Step 5



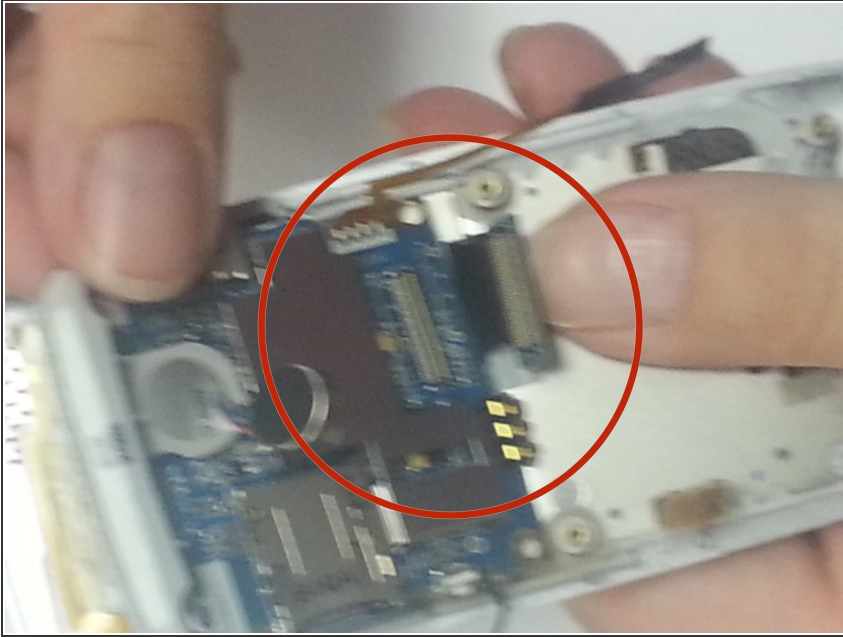
- Using the plastic opening tool gently insert it into the seam and work it around till the cover comes off. Being careful of the side buttons that pop off.

Step 6



- Grasp the sides of the motherboard and gently rock back and forth . This is due to the sticky tape that is on the battery

Step 7



- Disconnect the black serial cable from the mother board.

Step 8



- Gently pull of the antenna sticker tape.

To reassemble your device, follow these instructions in reverse order.