



Samsung Sway Rear Cover Replacement

How to replace the rear cover

Written By: Chris Rush





TOOLS:

- [iFixit Opening Tools](#) (1)
- [Phillips #00 Screwdriver](#) (1)
- [Tweezers](#) (1)

Step 1 — Rear cover



- Turn over the phone and make sure the slider is closed.

Step 2



- Using your thumb(s) slide the battery cover up to remove it.

Step 3



- Using your finger, grasp the corner on either side of the battery and pull up.

Step 4



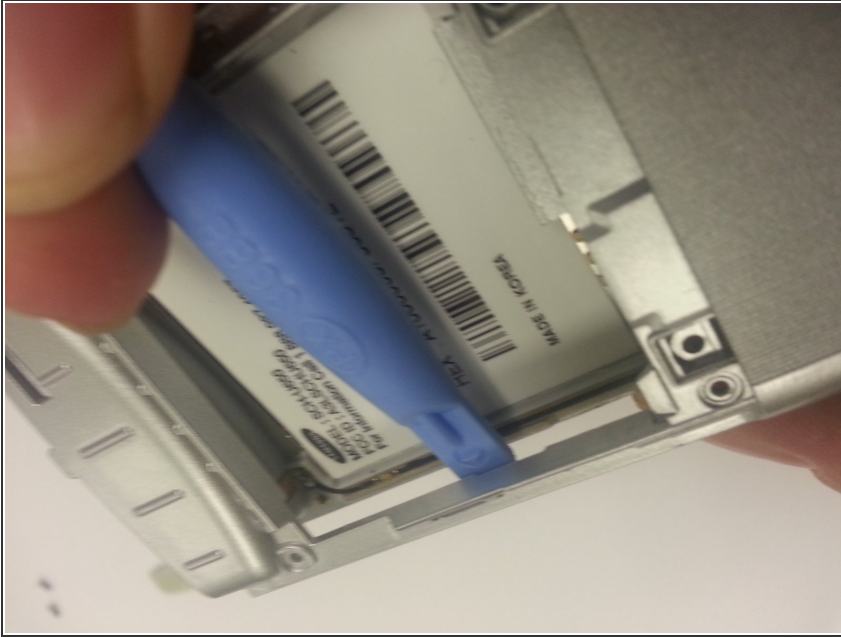
- Unscrew the four corner .4cm Phillips head screws and the two middle .3 cm Phillips head screws.

Step 5



- Gently insert a pair of tweezers under the Samsung logo on the bottom of the phone. Then unscrew the two .4 cm Phillips head screws underneath.

Step 6



- Gently insert the plastic opening tool into the seam where the battery was located. Work the opening tool around until the back cover comes off. Make sure to be careful of the side buttons that pop off.

To reassemble your device, follow these instructions in reverse order.