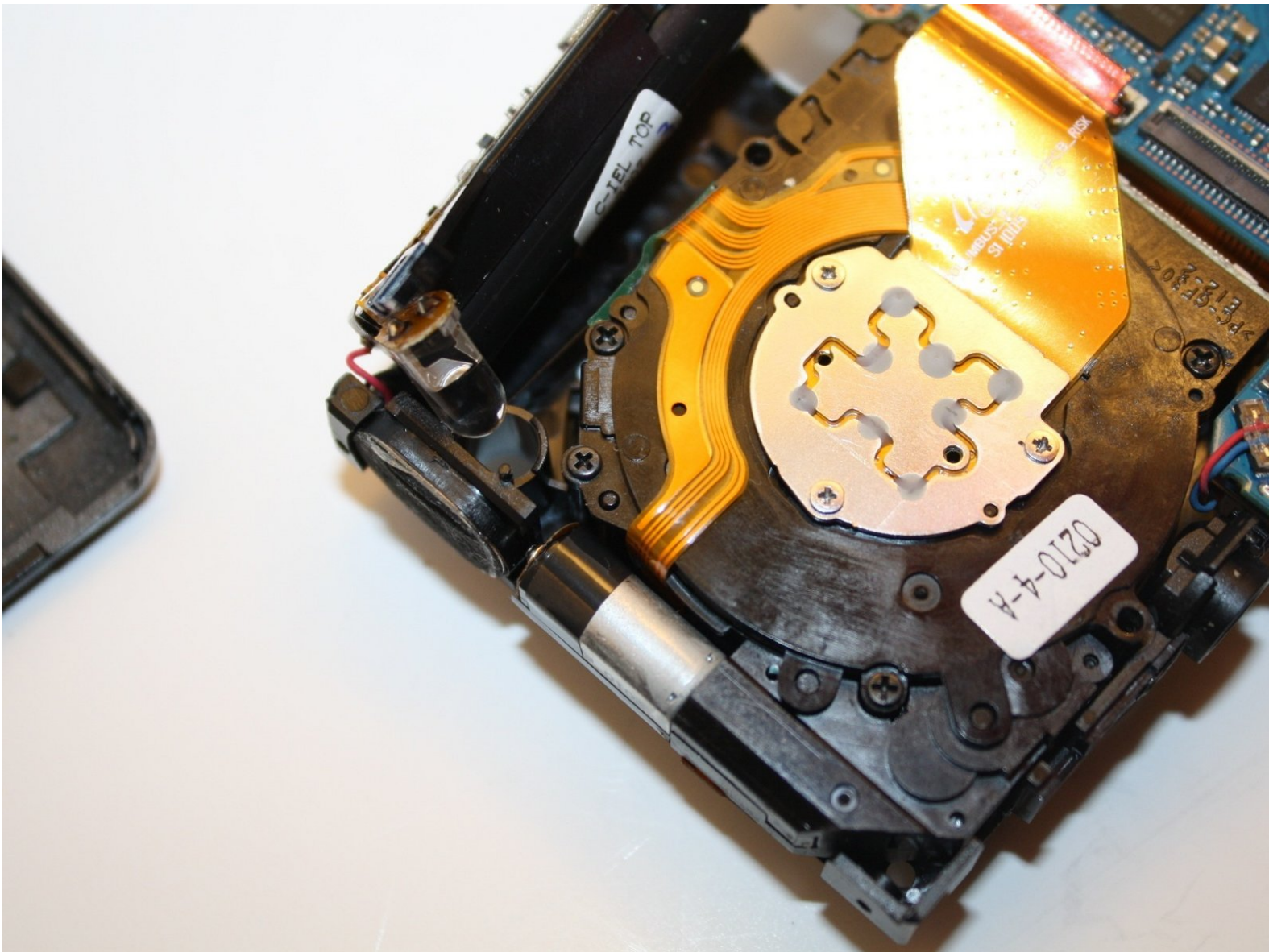




# Samsung TL220 AF Assist Lamp Replacement

This guide will show the user how to properly disassemble the Samsung TL220 camera to replace the interior light bulb.

Written By: chelsa





## TOOLS:

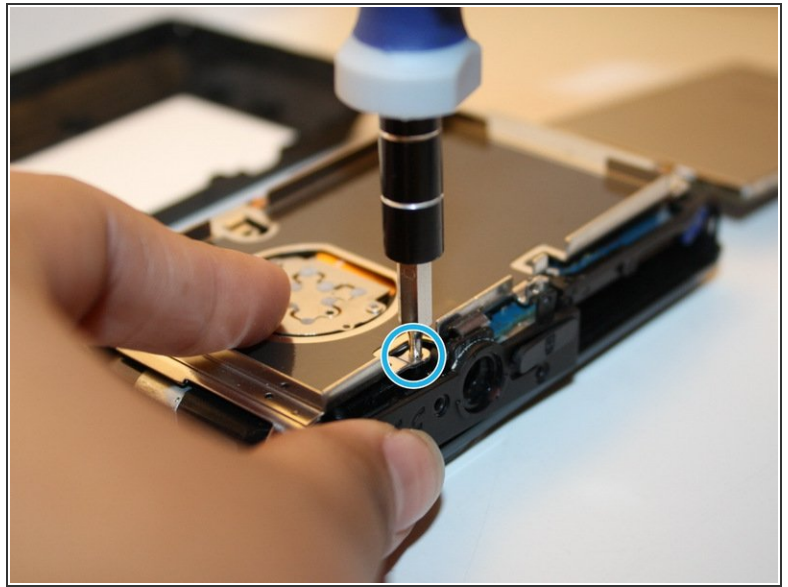
- [Essential Electronics Toolkit \(1\)](#)
-

## Step 1 — Light Bulb



- Begin with unscrewing the seven outside shell 4 mm Philip screws with the Philips screw driver.
- Now carefully pry open the back casing with the ifixit plastic opening tool.

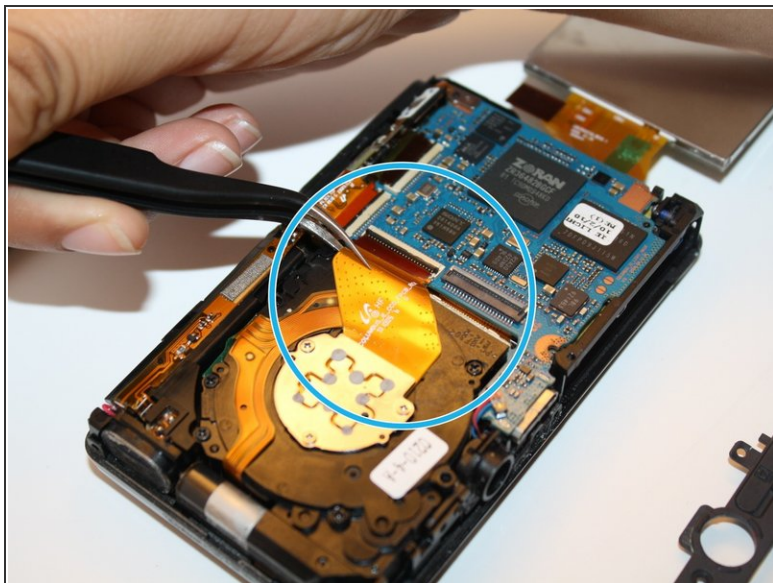
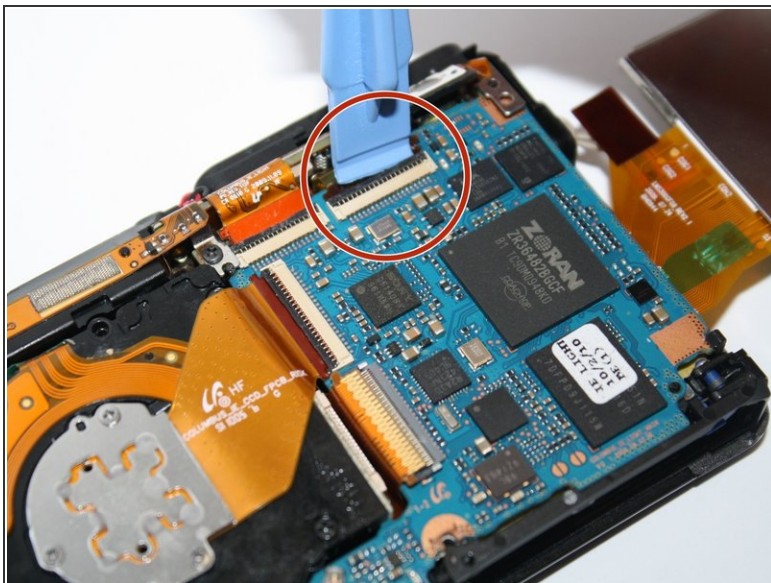
## Step 2



- Now that you have the back casing off, gently remove the LCD screen up and to lay on top of the table to the right.
- Next unscrew with the same screw driver, the 4 mm Philip screws on the back panel.

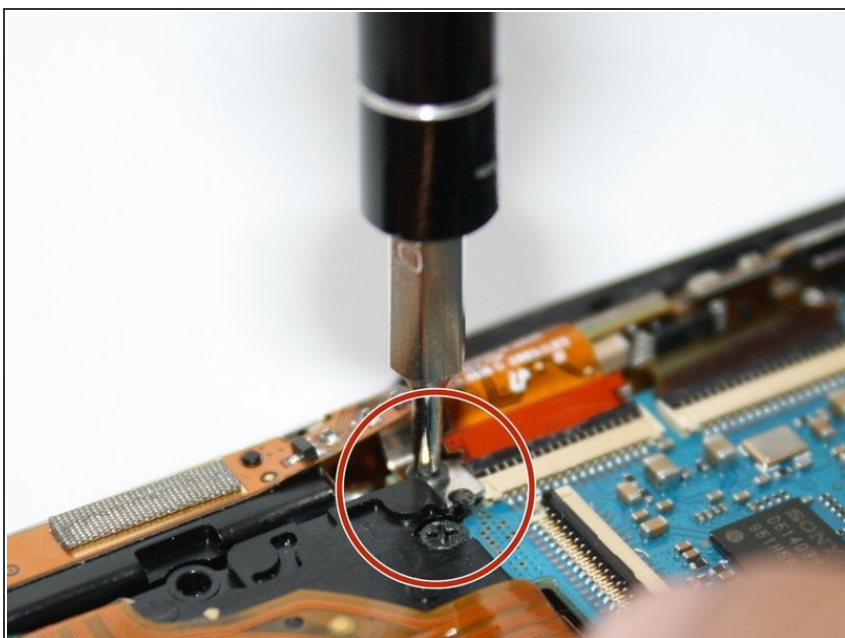


## Step 3



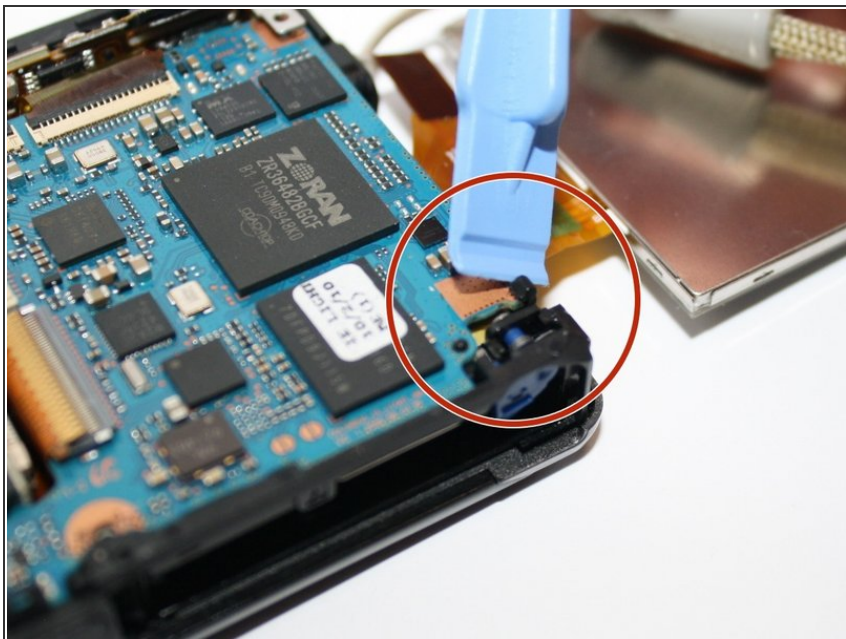
- Unclip the four connectors that hold down the orange copper film strips with the plastic opening tool.
- Then carefully pull out the three film strips with the ifixit tweezers.

## Step 4



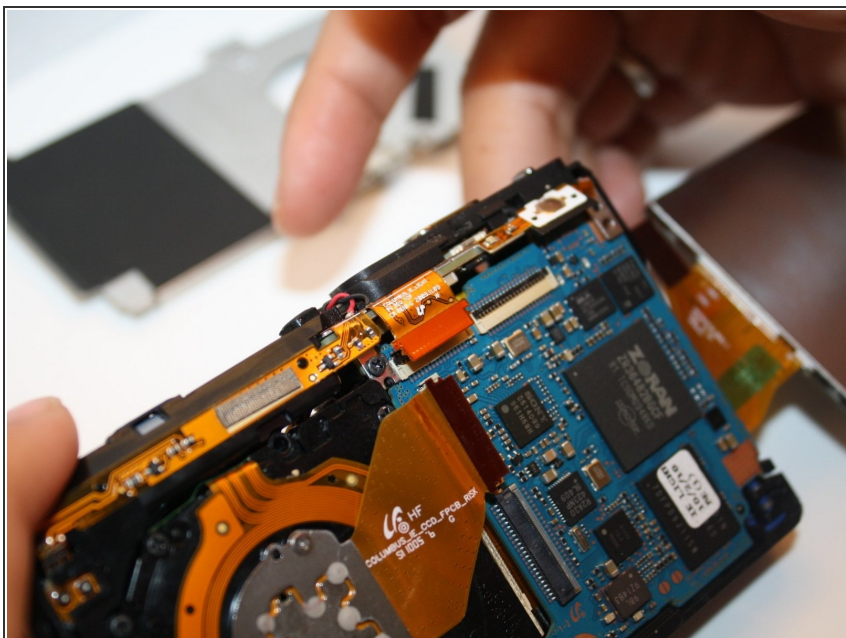
- Remove the 4 mm Philip screws located above the center film strip with the Philip screw driver. This will allow the top frame to come loose to take off.

## Step 5



- Then pull the black claw located at the bottom right of the camera, to the right with the plastic opening tool. This holds the main plate down.

## Step 6



- Slowly lift with your fingers, the top frame of the camera up, disconnecting it from the main piece.

## Step 7



- This piece disconnected exposes the light bulb that you can change out at this point in the guide.

To reassemble your device, follow these instructions in reverse order.