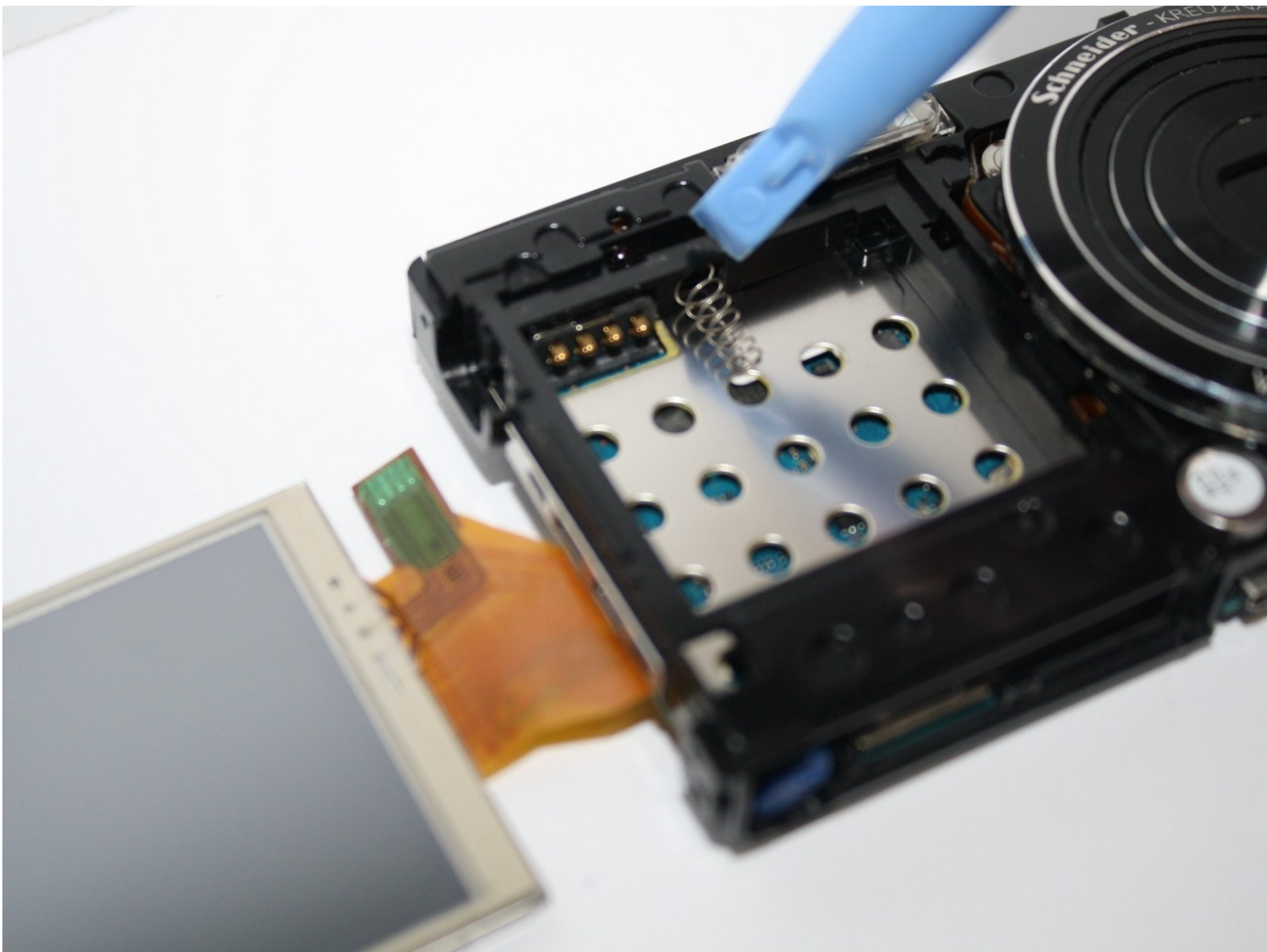




Samsung TL220 Battery Spring Replacement

This guide will show the user how to take apart the Samsung TL220 camera step by step with images to replace the battery spring.

Written By: chelsa

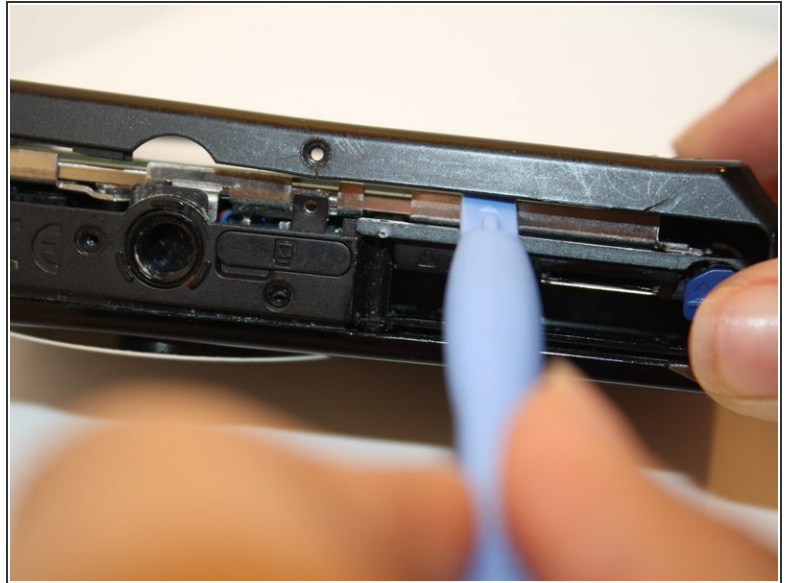




TOOLS:

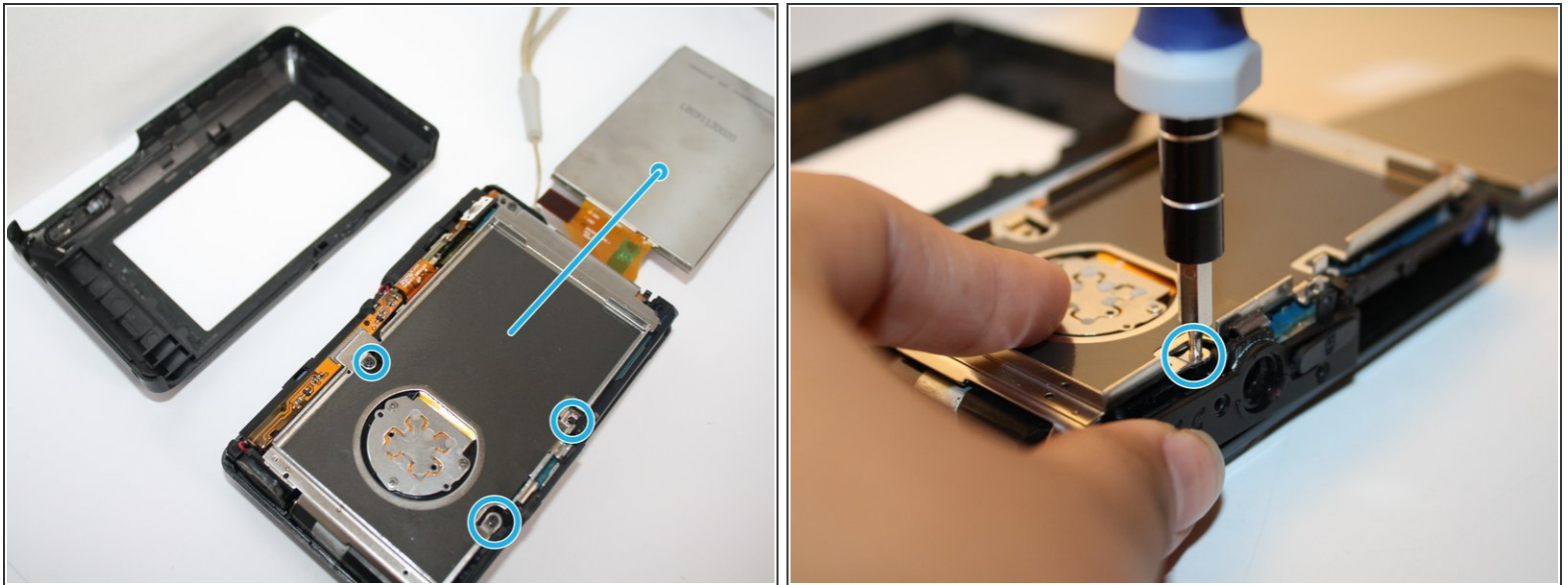
- [Essential Electronics Toolkit \(1\)](#)
-

Step 1 — Battery Spring Replacement



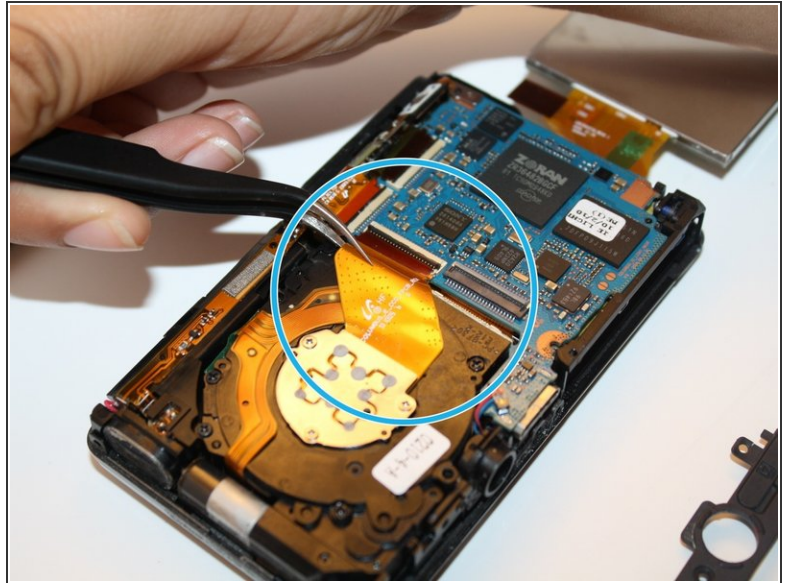
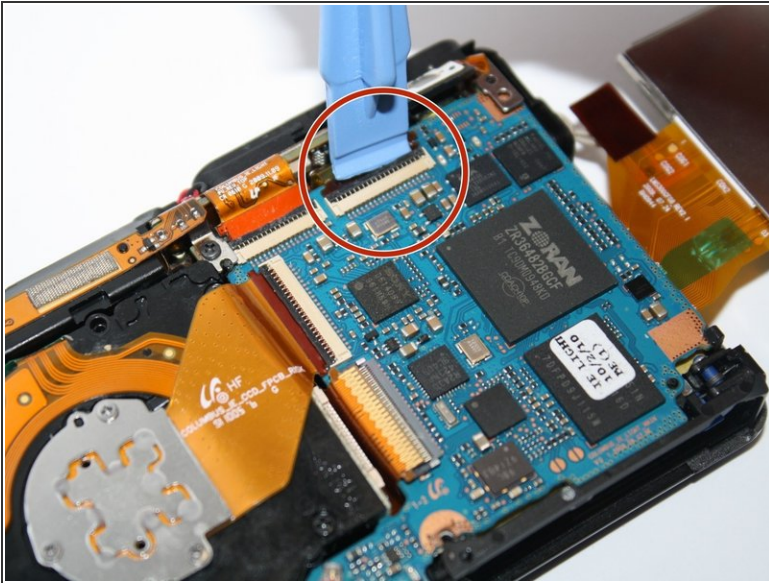
- Begin by unscrewing all seven 4 mm phillip's screws located on the outside of the camera.
- Using the plastic opening tool carefully pry open the camera, lifting the back casing off.

Step 2



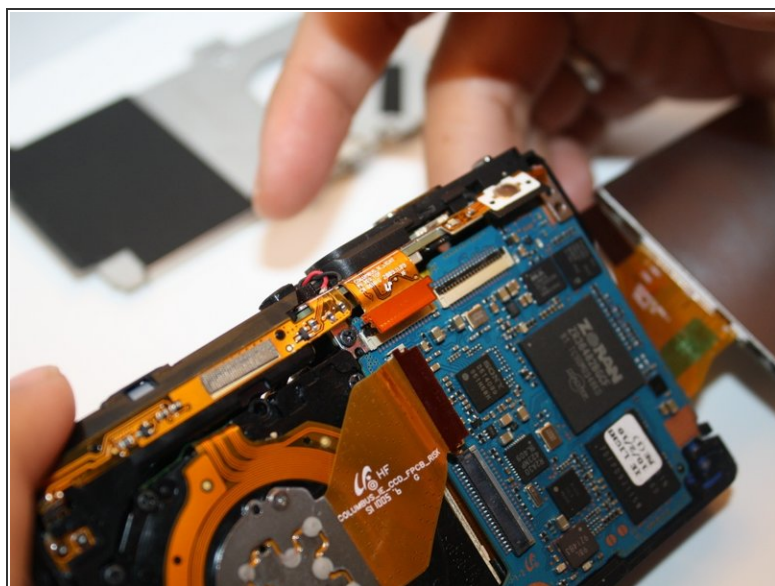
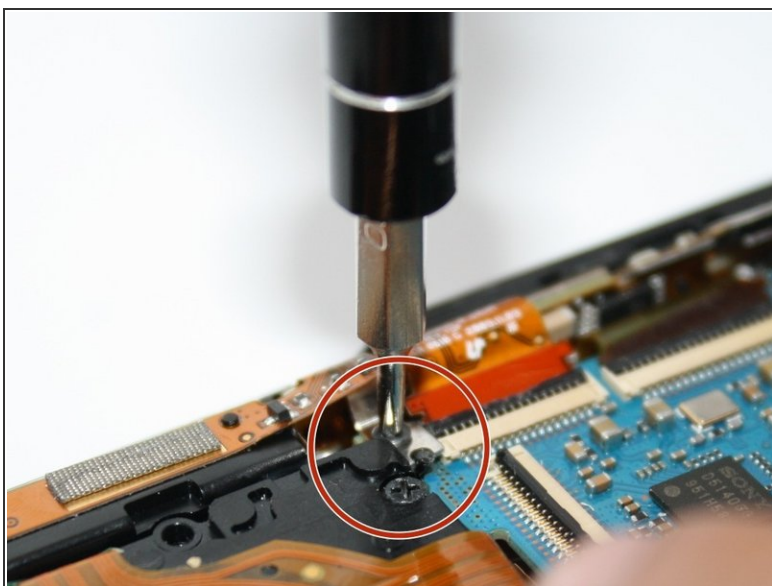
- Now that you have the back casing off, gently move the LCD screen from the camera to the right and lay it facing down on the table.
- Next unscrew the three 4 mm Philips screws on the back panel with the same screw driver.

Step 3



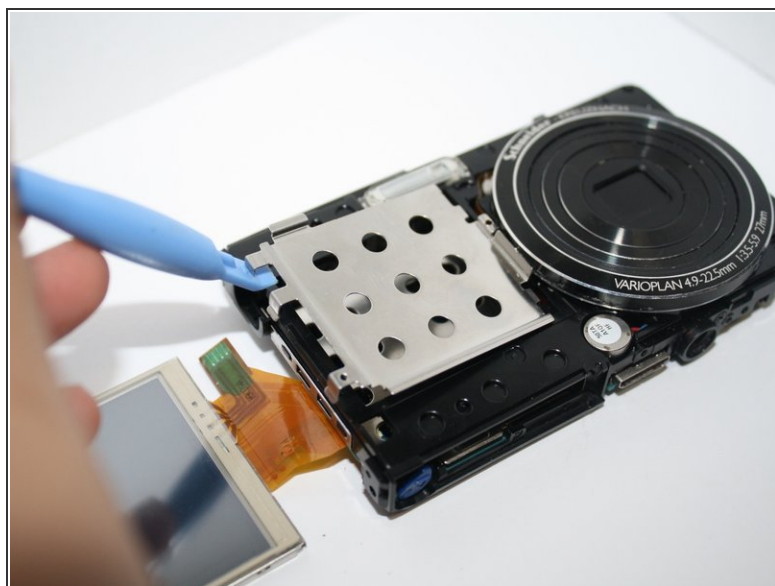
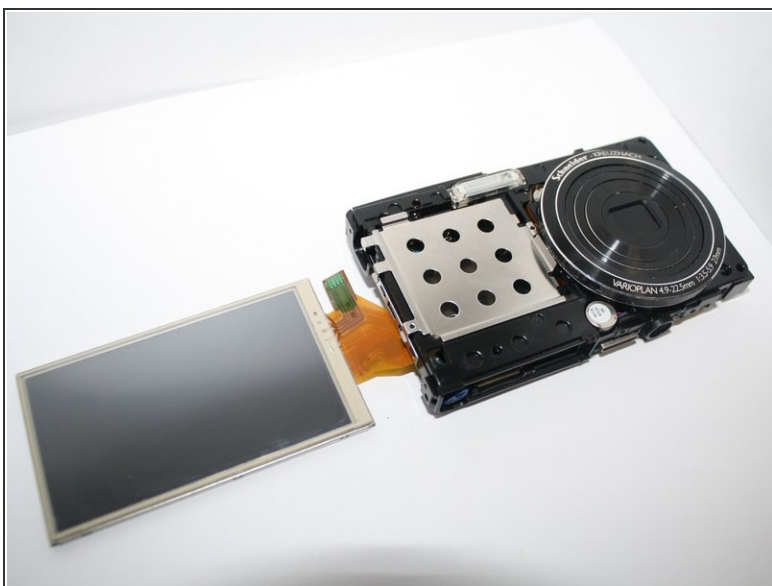
- Unclip the four connectors with the plastic opening tool which holds down the orange film strips.
- Gently with the tweezers remove the four orange film strips from the connectors.

Step 4



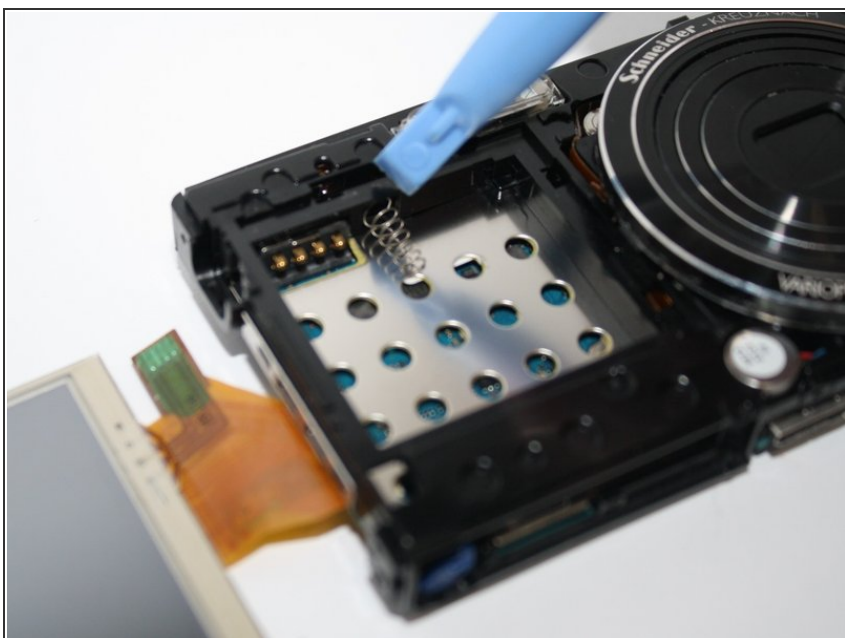
- Once the orange film strips have been released from the connectors, unscrew the Phillips 4 mm silver screw which holds down the top of the camera's frame.
- With your fingers gently push up the camera's top frame. Once the camera's top frame is off you can then gently remove the camera's front casing off, as well.

Step 5



- Flip the entire camera over so that the lenses are facing upward with the LCD screen showing to the side.
- Now remove the silver case, seen demonstrated in the picture.

Step 6



- After all the parts are disassembled, you will reach the spring part of the camera.

To reassemble your device, follow these instructions in reverse order.