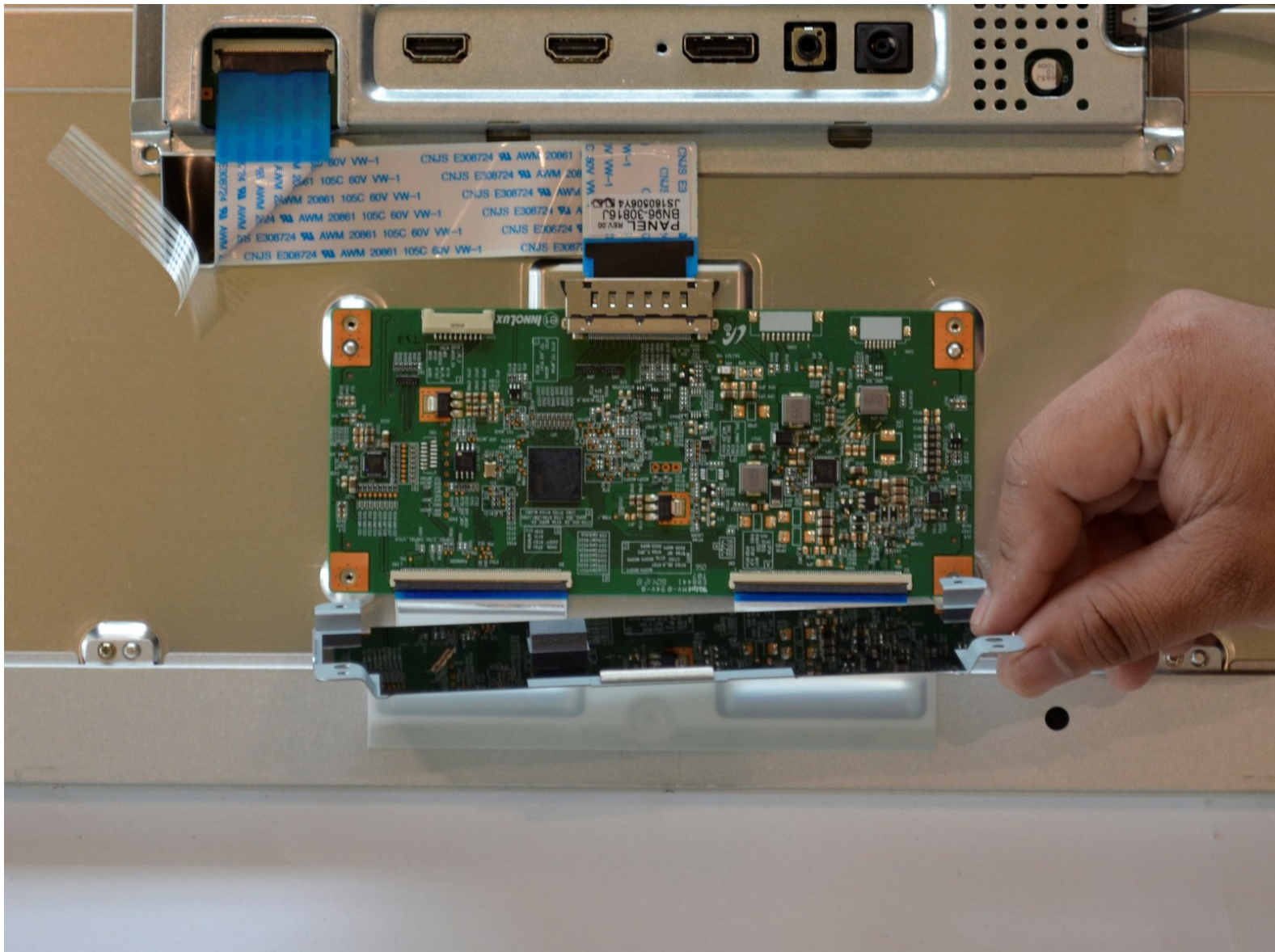




Samsung U28E510 Low Voltage Display Signal Board Replacement

Replacement of LVDS Board in the event of signal failure after replacement of power supply board

Written By: Raymundo Calderon-Robles



INTRODUCTION

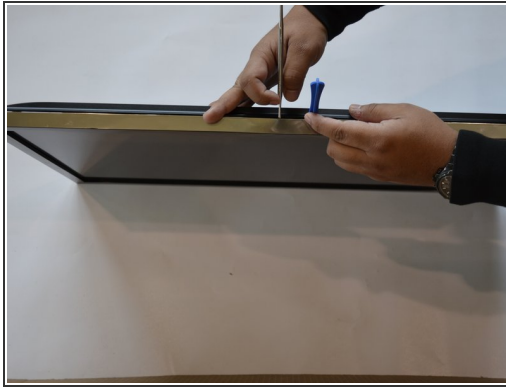
This guide is assist you in the replacement of the LVDS Board by removing the back cover to reveal the LVDS Board.



TOOLS:

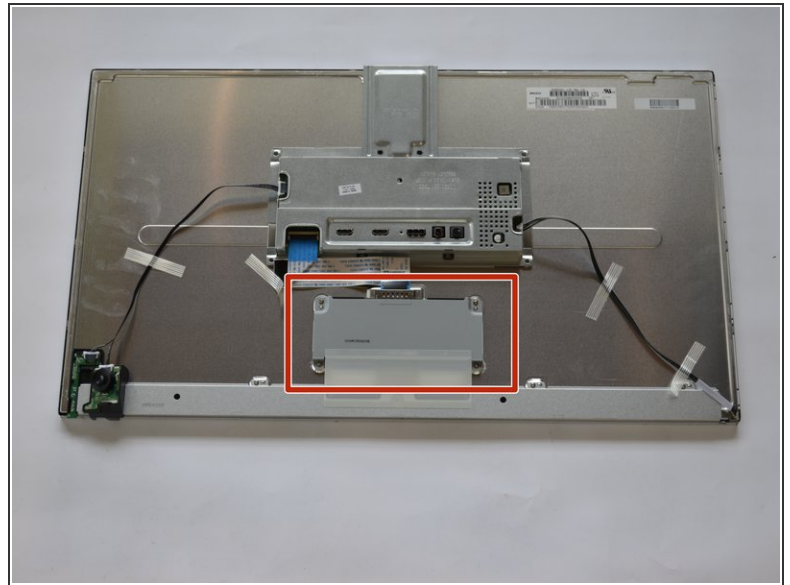
- [iFixit Opening Tools](#) (1)
 - [Phillips #2 Screwdriver](#) (1)
 - [Phillips #0 Screwdriver](#) (1)
-

Step 1 — Low Voltage Display Signal Board



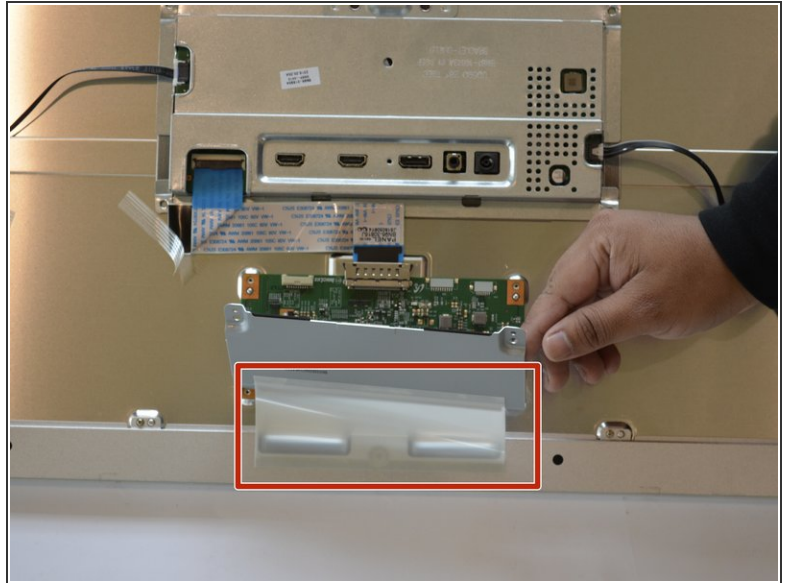
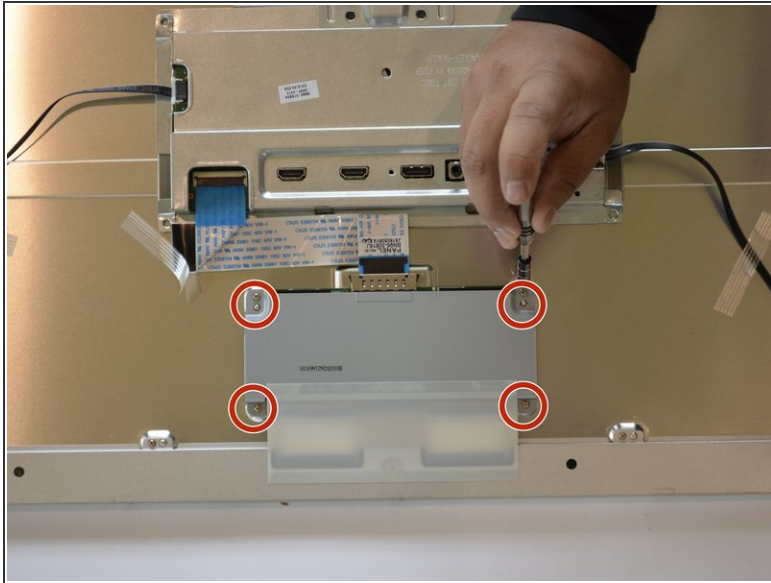
- Start by removing the screen bezel.
- Use a pair of spudgers to pry between the bezel and the rest of the monitor.
- ⓘ Ideally use plastic tools as this step could damage the edges of the screencover.
- lay monitor on its back and pull off screen cover.

Step 2



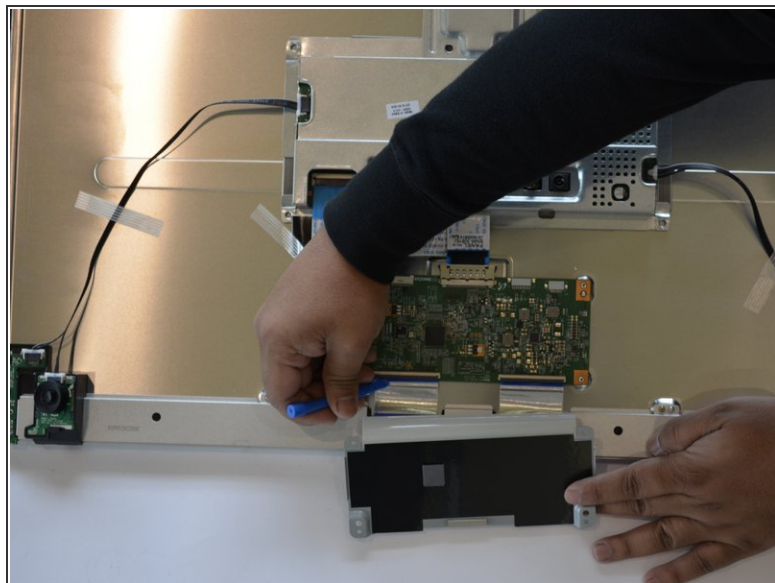
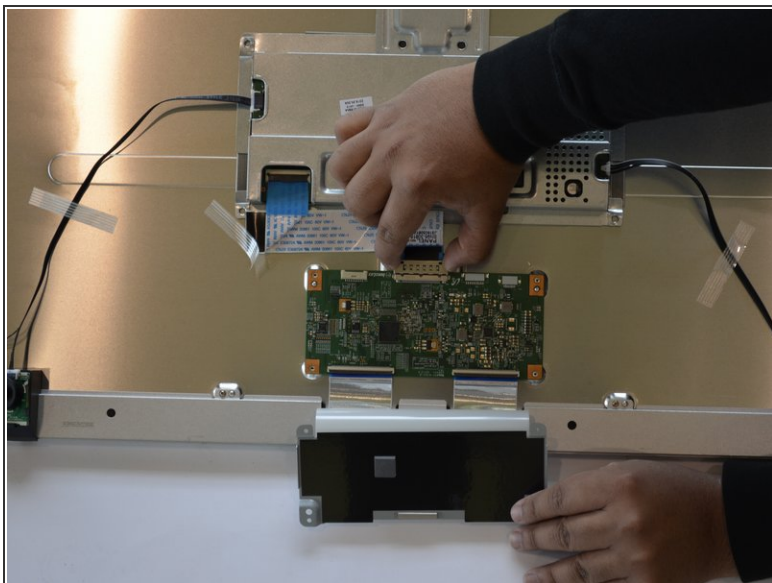
- Flip the monitor over so that it is face down.
- Remove the single screw in the middle using a #2 Phillips screwdriver.
- Remove the backing to reveal the Low Voltage Display Signal Board.

Step 3



- Remove the 4 holding screws using a #0 Phillips screwdriver.
- ⚠ Lift the cover to expose the LVDS Board while taking care to prevent removal of the white fogged plastic cover. This plastic cover keeps the wire ribbons safe from accidental damage.

Step 4



- Disconnect the input signal ribbon cable from the top of the board.
- Disconnect the output signal ribbon cables by using a plastic sprudger to lift the connection lock.
- Remove and replace the LVDS Board.

To reassemble your device, follow these instructions in reverse order. Ensure the bezel completely snaps in place all around the monitor.