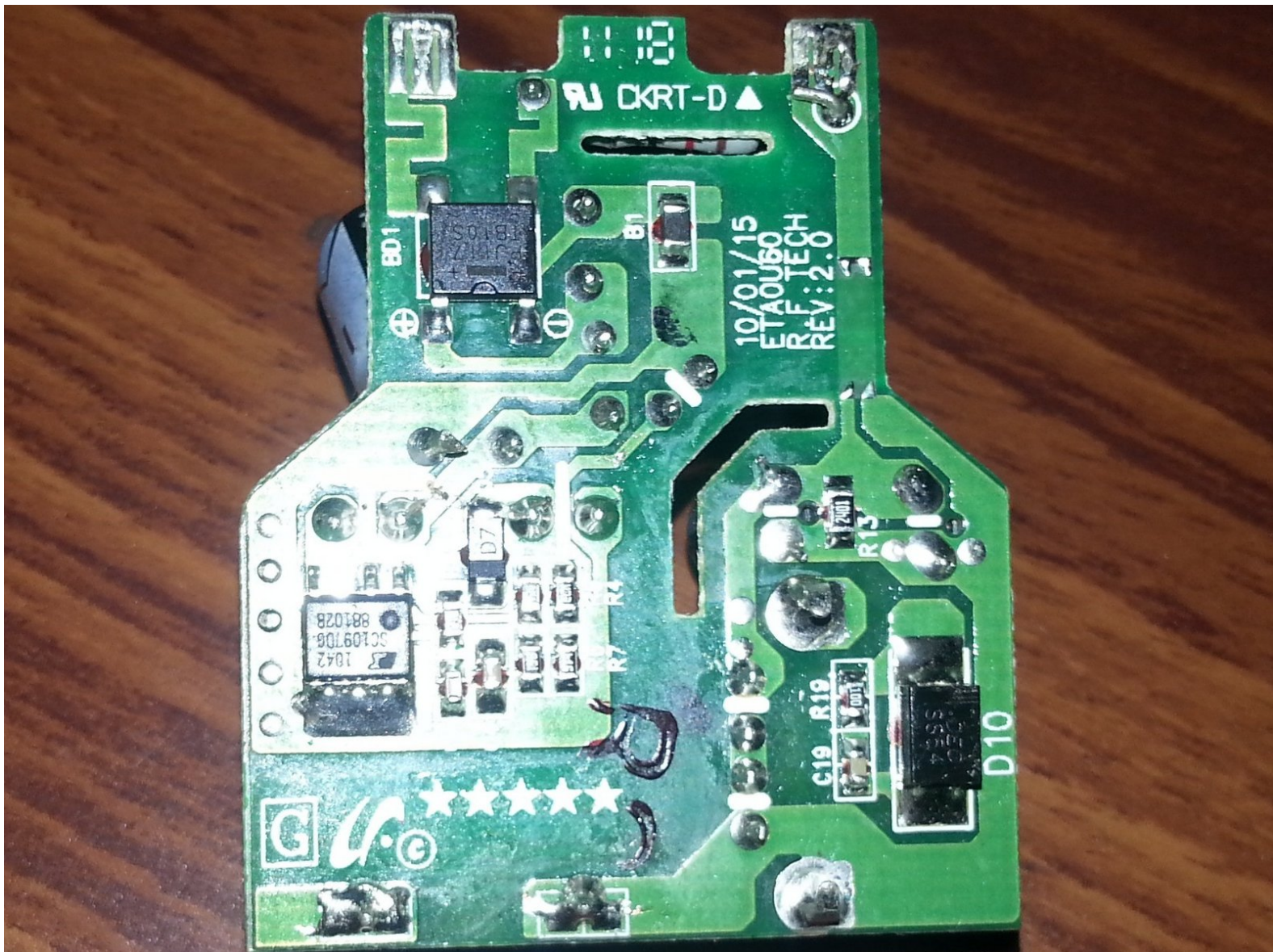




Samsung USB Charger

I bought a sgs3. it have an oem 700mA charger. and i also want to buy a 2A sgs 4 oem charger. and i bought a new oem one from ebay. they say it is oem one. after it arrive i check it self. itz clearly see its an oem one. charging rate is also faster than

Written By: harsha



INTRODUCTION

I bought a sgs3. it have an oem 700mA charger. and i also want to buy a 2A sgs 4 oem charger. and i bought a new oem one from ebay. they say it is oem one. after it arrive i check it self. itz clearly see its an oem one. charging rate is also faster than



TOOLS:

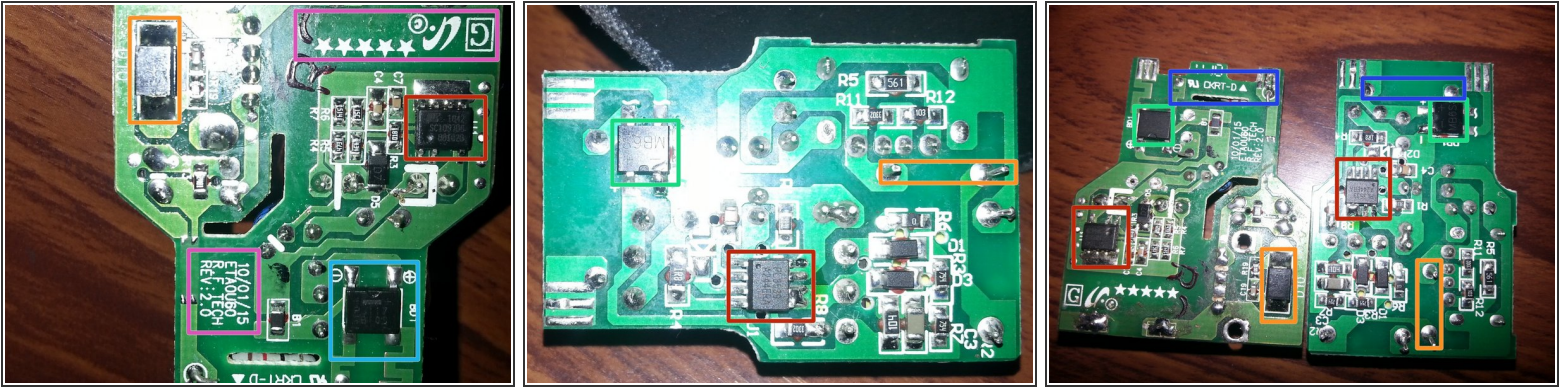
- [2.5 mm Flathead Screwdriver](#) (1)



PARTS:

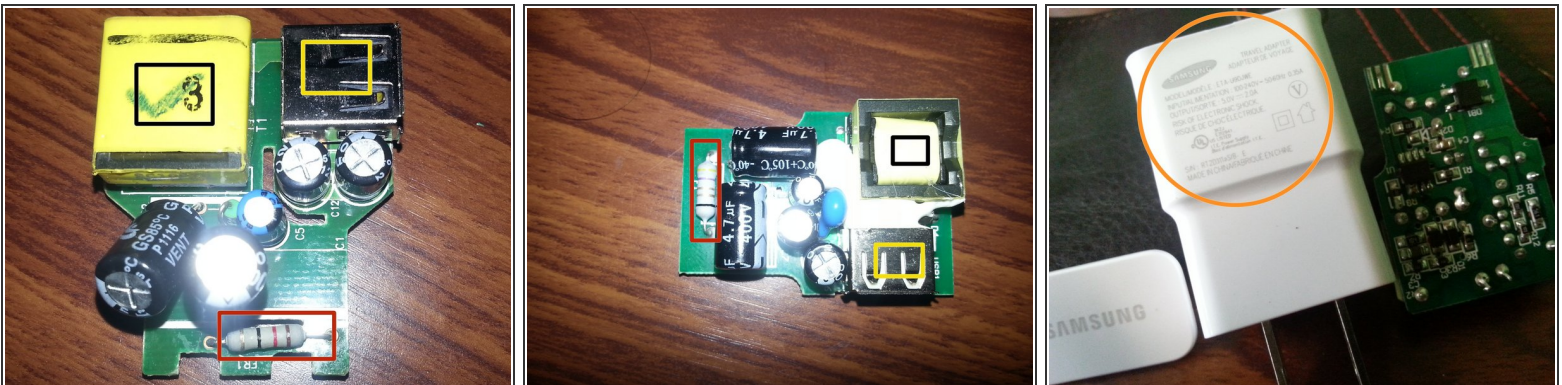
- [Polyurethane Glue](#) (1)

Step 1 — Samsung USB Charger



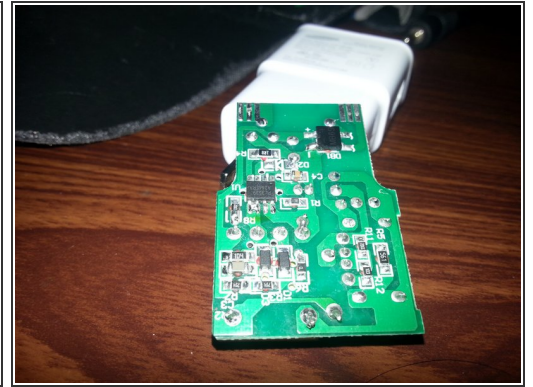
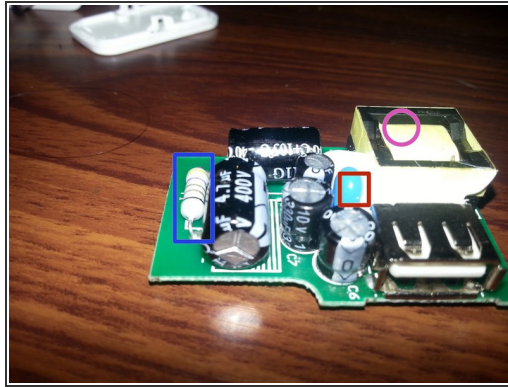
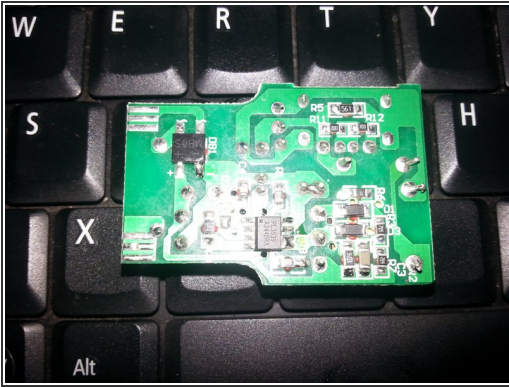
- Samsung OEM LOGO and the Date of Manufacturing OEM Chager
- Control IC SC1097DG OEM PL3539 For Fake
- Bridge Rectifier TB10S for OEM MB6S For fake
- Scotty Diode 5A for OEM 2A for Fake
- Fuse Resistor

Step 2



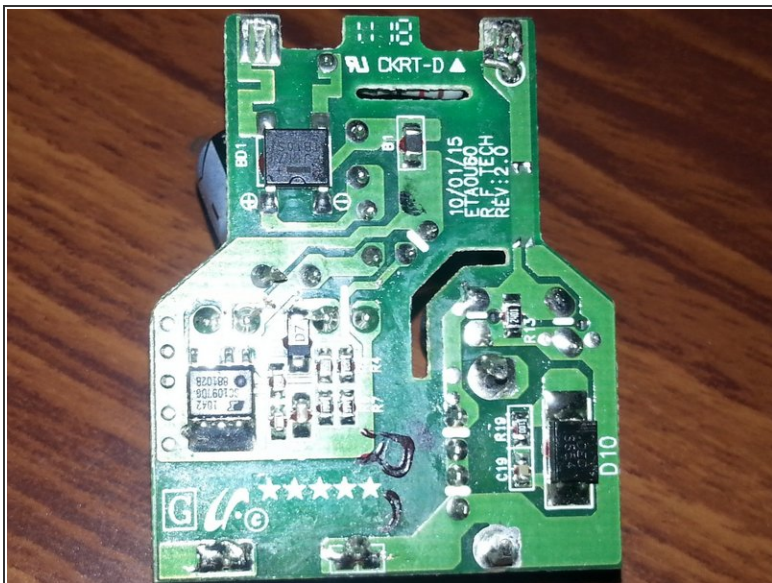
- Fake Samsung But also Best Quality. its give 1.3A
- Fully Isolated Transformer in OEM one
- USB Port
- Fused Resistor for Safety

Step 3



- Blue component is a special "Y" capacitor to reduce interference. (2A charger)
- Transformer not fully isolated than OEM one
- Fuse Resistor

Step 4



(i) Always Buy OEM Genuine

⚠ Disassembled By Harsha Jayamanna

(i) END OF THE TEARDOWN...

● **Thanks For Watching**

To reassemble your device, follow these instructions in reverse order.