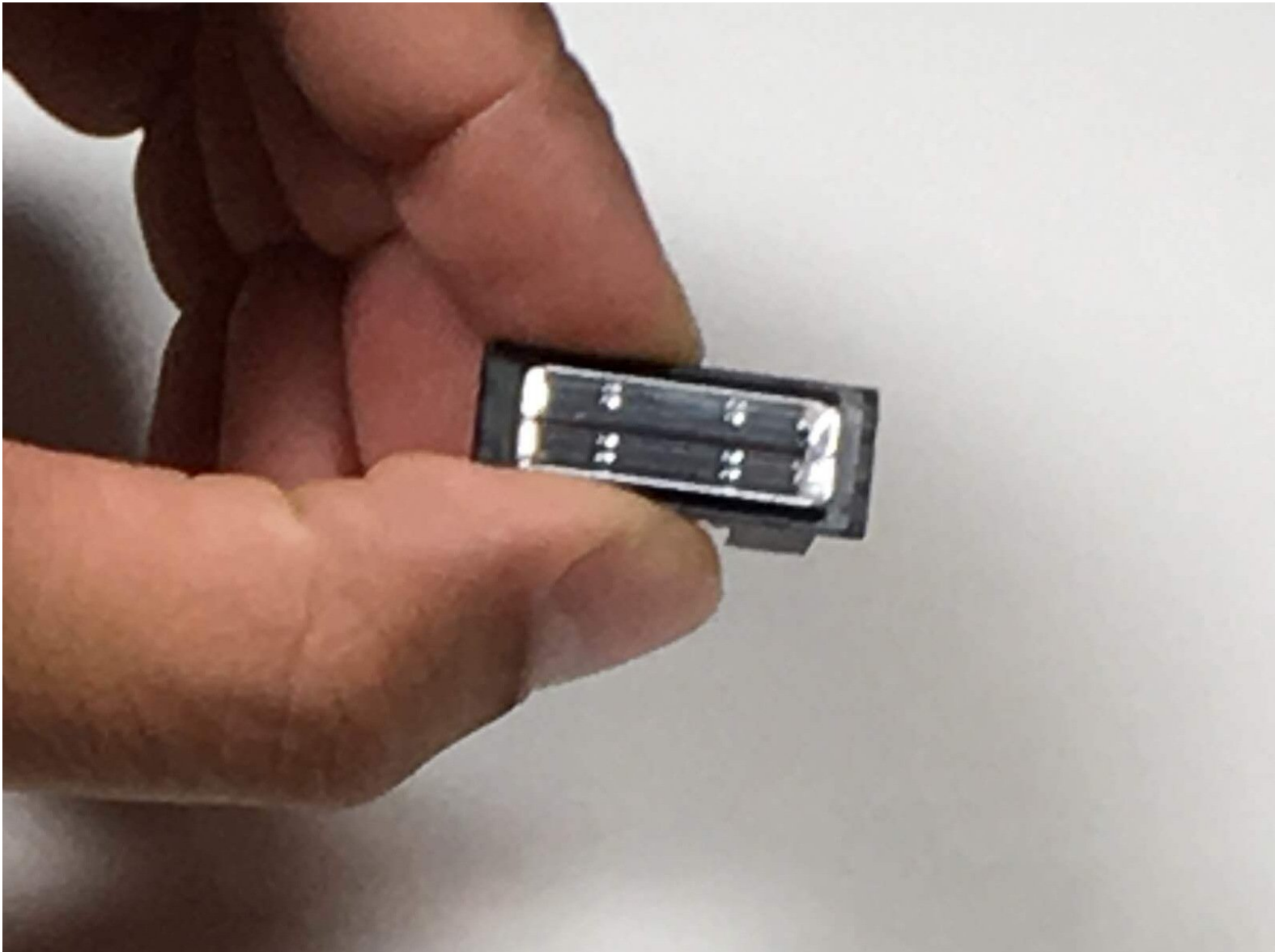




# Samsung WB1100F Camera Flash Replacement

Replace the camera flash of your Samsung WB1100F.

Written By: Jesse Lindsey



# INTRODUCTION

This guide provides instructions on how to replace the flash component of the Samsung WB1100F.



## TOOLS:

- [Phillips #00 Screwdriver](#) (1)
  - [Soldering Iron](#) (1)
  - [iFixit Opening Tools](#) (1)
-

## Step 1 — LCD Screen Cover



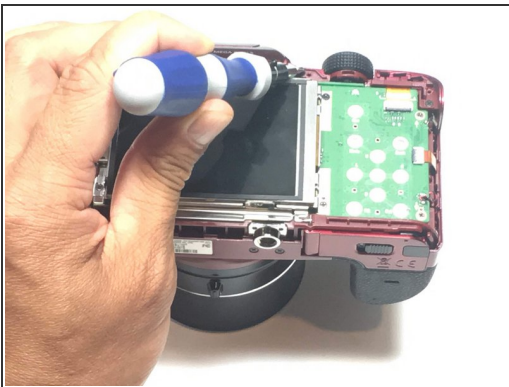
- Remove six 1.2 mm Phillips #00 screws connected to the tripod dock and adjacent screws.
- Remove six 1.2 mm Phillips #00 screws from the side of the camera.

## Step 2



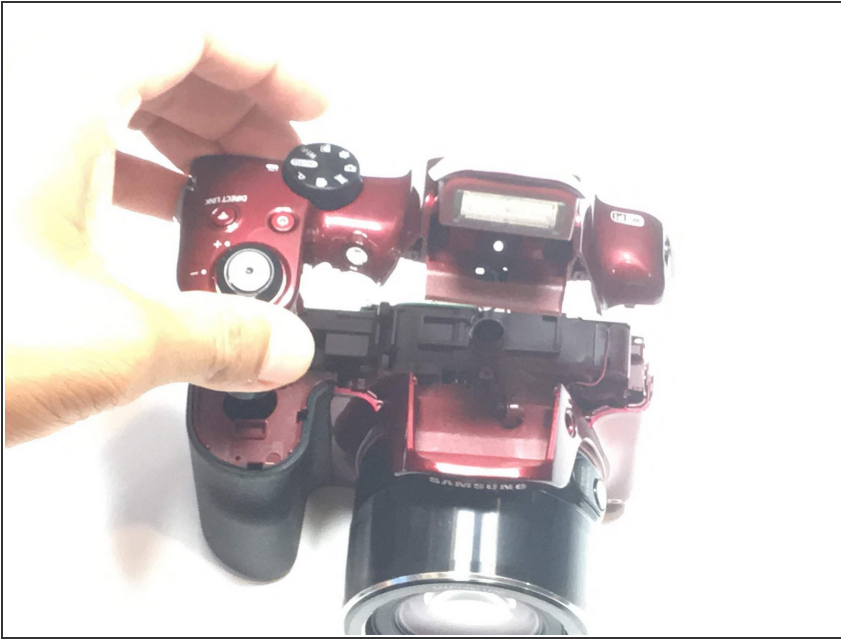
- ① Use a plastic opening tool or spudger if available.
- Using the flat end of a spudger, loosen the connection between the back panel and the device. Remove the back panel using your hands.

## Step 3 — Camera Flash



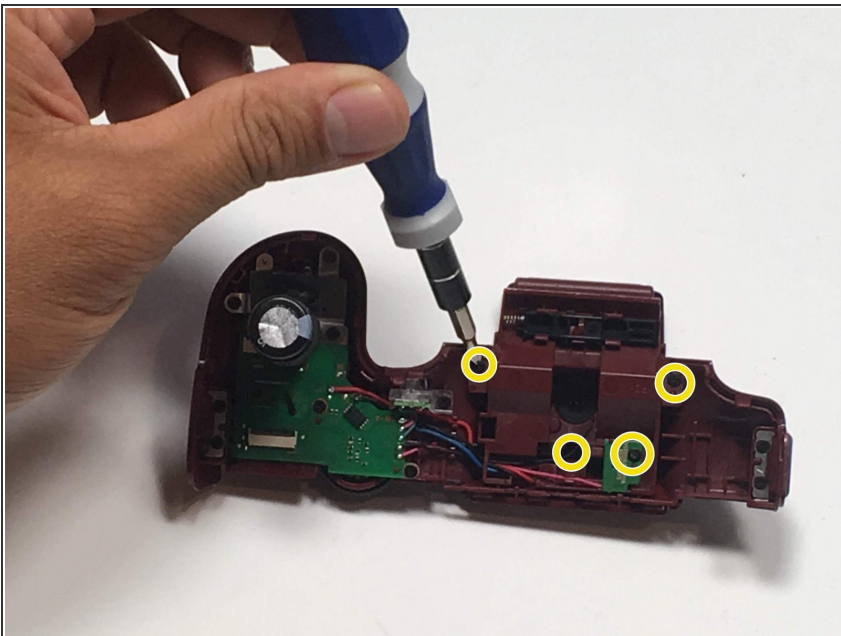
- Remove four 1.2 mm Phillips #00 screws from the top panel.

## Step 4



- Using the flat end of a spudger, loosen the connection between the top panel and the device. Remove the top panel using your hands.

## Step 5



- Remove four 1.2 mm Phillips #00 screws from the flash assembly

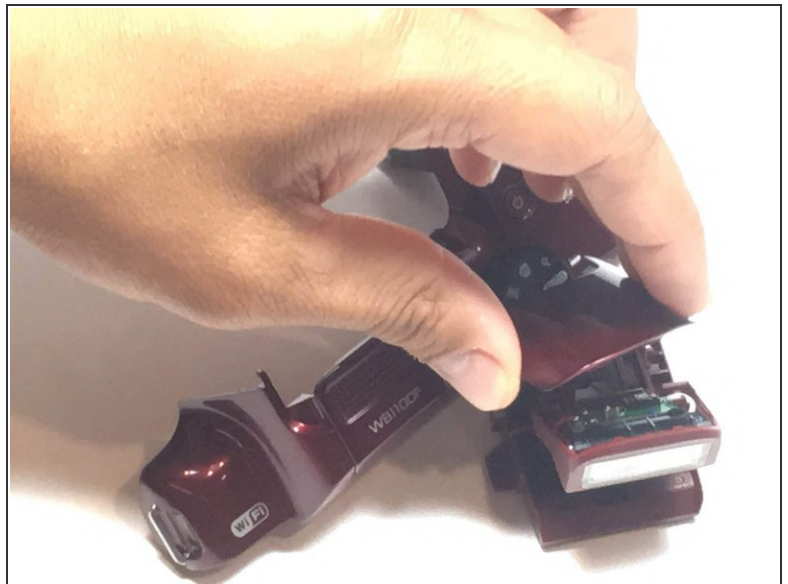
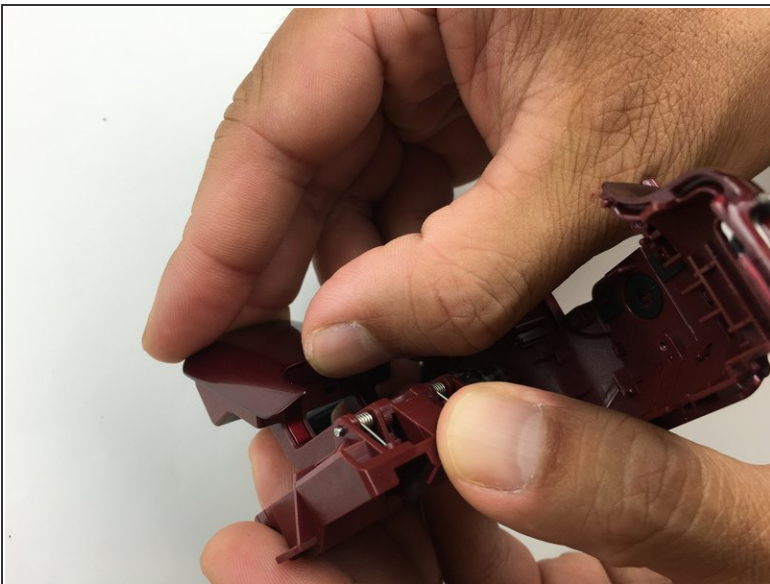


## Step 6



- Using your hands, remove the flash assembly. This should not require much force.

## Step 7



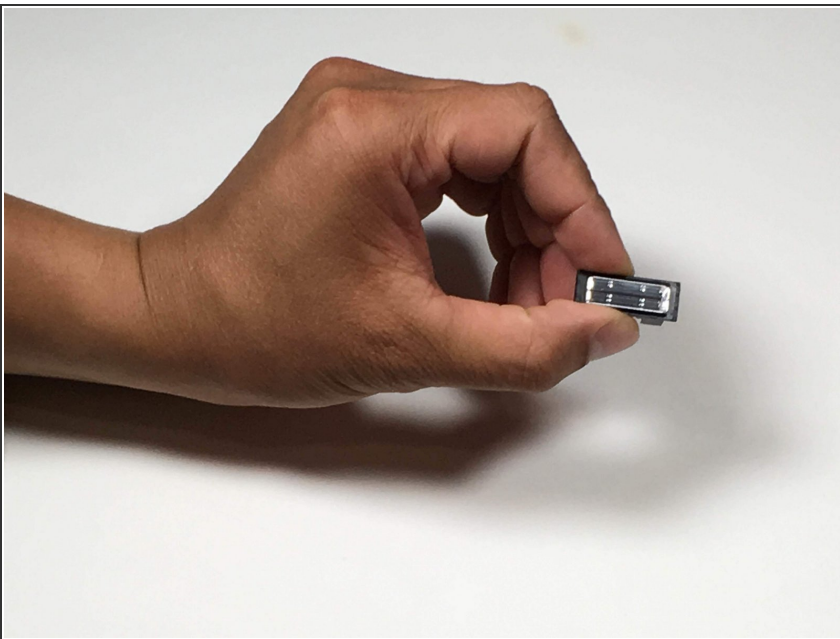
- Using your hands, remove the top flash panel by pressuring down on the back to release a locking tab.

## Step 8



- [Desolder](#) three wires on the flash assembly.

## Step 9



- Gently remove the flash assembly from the body.

To reassemble your device, follow these instructions in reverse order.