



Samsung WB1100F Camera Lens Replacement

Replace the lens assembly of your Samsung WB1100F.

Written By: Jesse Lindsey



INTRODUCTION

This guide will show you how to replace the lens assembly on the Samsung WB1100F. It will show you a step by step replacement guide of how to remove parts leading up to and including the lens successfully.



TOOLS:

- [Phillips #00 Screwdriver](#) (1)
 - [iFixit Opening Tools](#) (1)
 - [Soldering Iron](#) (1)
 - [Phillips #0 Screwdriver](#) (1)
-

Step 1 — LCD Screen Cover



- Remove six 1.2 mm Phillips #00 screws connected to the tripod dock and adjacent screws.
- Remove six 1.2 mm Phillips #00 screws from the side of the camera.

Step 2



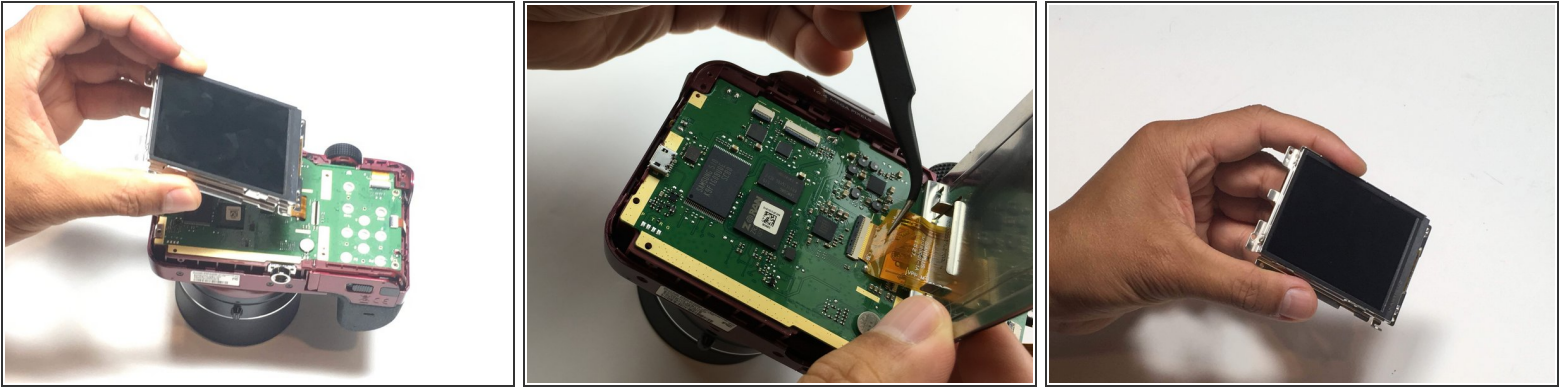
- ① Use a plastic opening tool or spudger if available.
- Using the flat end of a spudger, loosen the connection between the back panel and the device. Remove the back panel using your hands.

Step 3 — LCD Screen



- Remove four 1.2 mm Phillips #1 screws connected to the LCD screen.

Step 4



- Flip the LCD screen over to reveal the display cable.
 - Use the tip of a spudger or your fingernail to flip up the small retaining flap on the display cable ZIF connector.
- ⚠ Be sure you are prying up on the hinged retaining flap, not the connector itself.
- Using a pair of tweezers, remove the ribbon cable from its socket on the motherboard.
- ★ The white line on this ribbon cable marks the edge of the connection area. To reinstall, insert the cable into the connector up to this line, and then close the retaining flap. If the cable doesn't insert easily up to (or very near to) this line, it's probably misaligned and needs to be gently removed and repositioned.

Step 5 — Motherboard



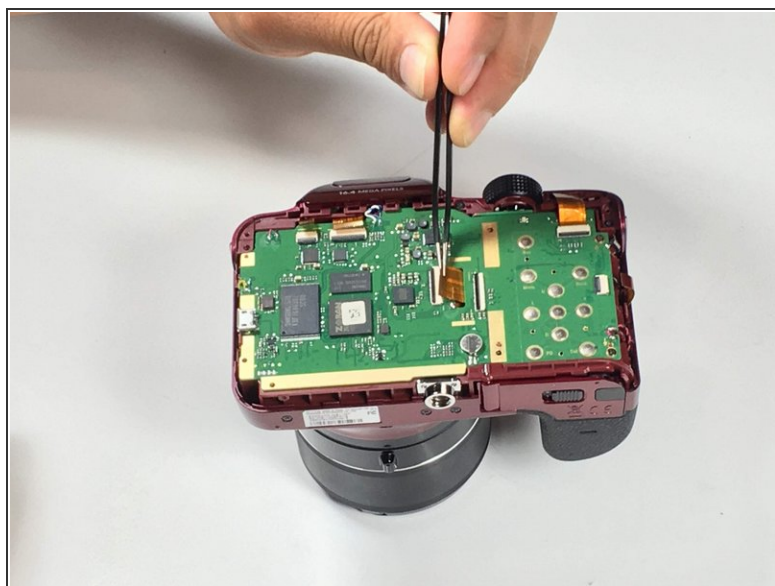
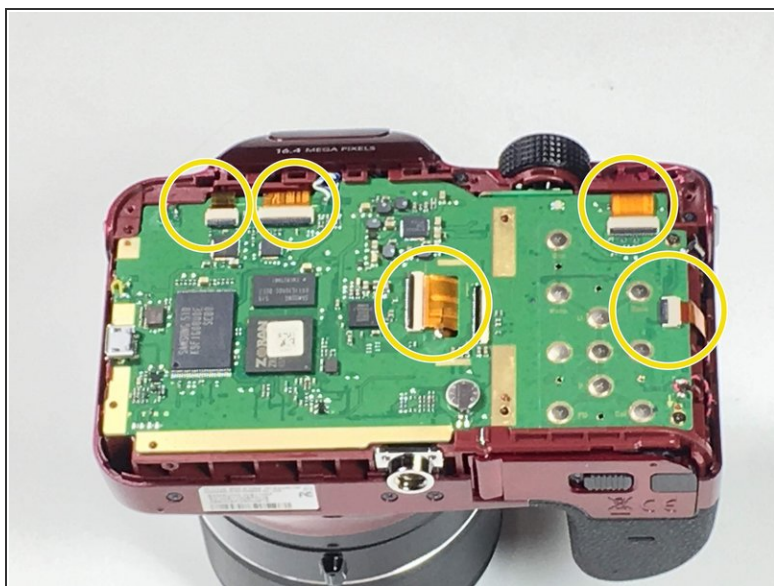
- Remove two 1.2 Phillips #00 screws connected to the motherboard.

Step 6



- [Desolder](#) five wires connected to the camera motherboard.

Step 7



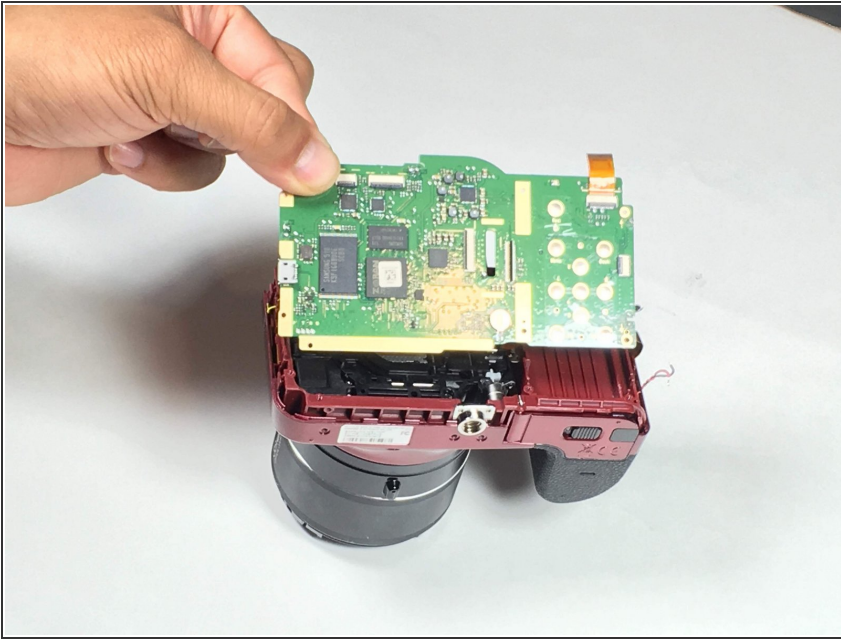
- Use the tip of a spudger or your fingernail to flip up the small retaining flaps on the five ZIF connectors on the motherboard.

⚠ Be sure you are prying up on the hinged retaining flap, not the connector itself.

- Detach the five ribbon cables from the camera motherboard.

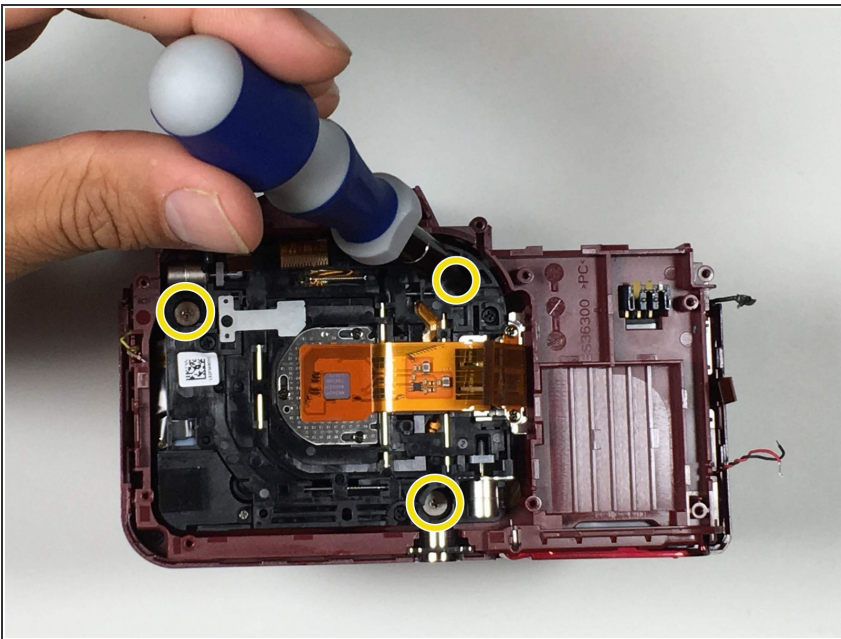
🔧 The white line on the ribbon cables mark the edge of the connection area. To reinstall, insert the cables into the connector up to this line, and then close the retaining flap. If a cable doesn't insert easily up to (or very near to) this line, it's probably misaligned and needs to be gently removed and repositioned.

Step 8



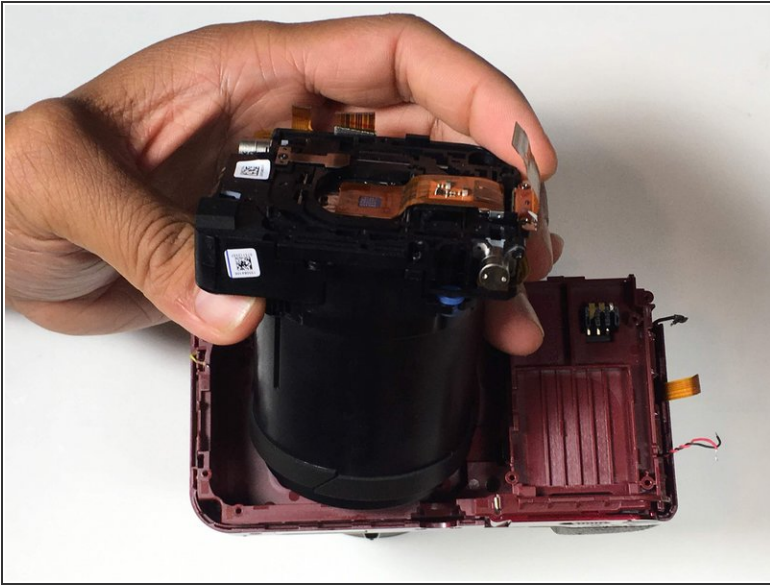
- Gently remove the motherboard.

Step 9 — Camera Lens



- Remove the three 1.5 mm Phillips #1 screws connected to the lens assembly.

Step 10



- Pull the lens assembly from main body of the camera, using a spudger to pry if necessary.

To reassemble your device, follow these instructions in reverse order.