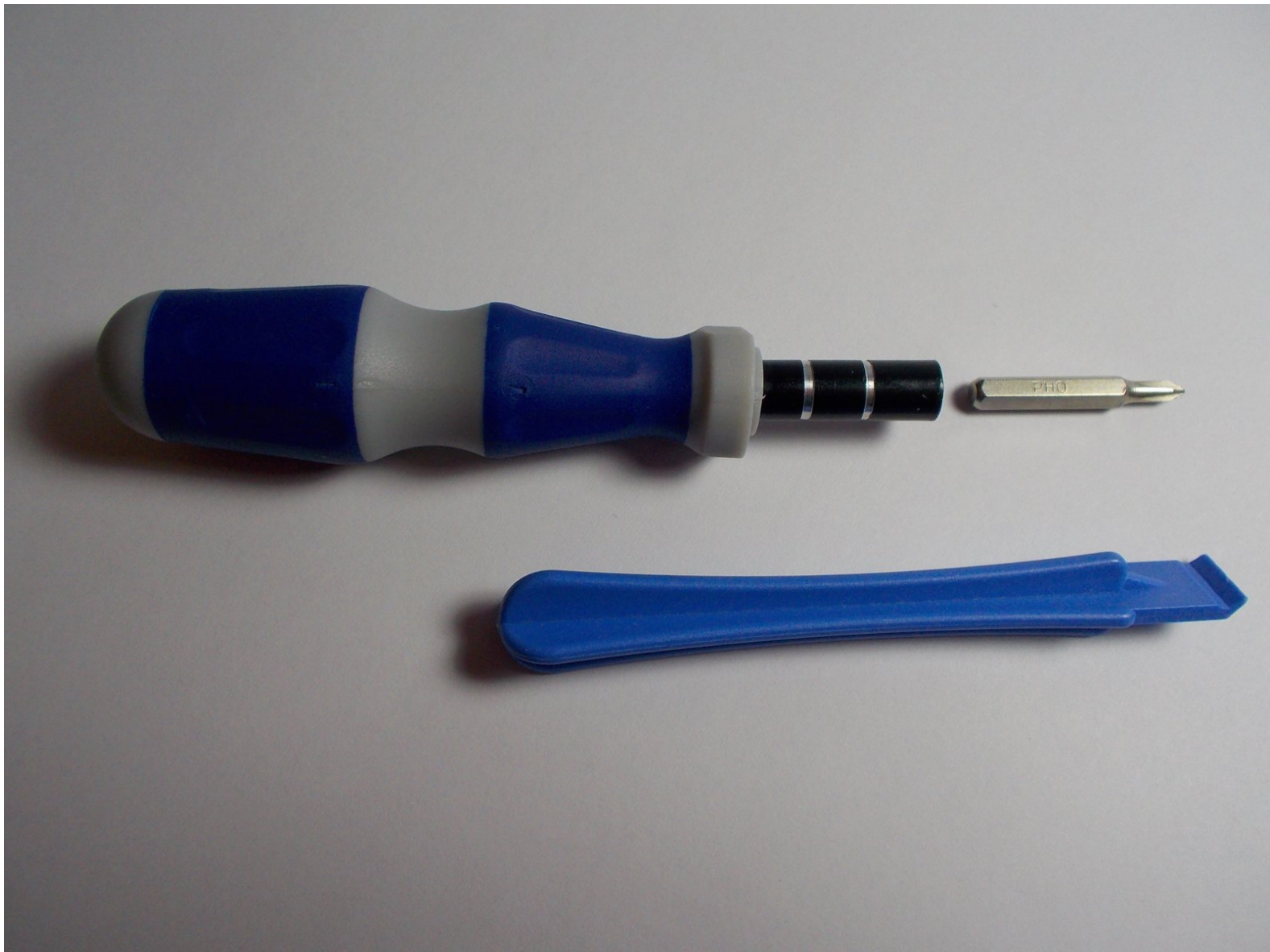




Samsung WB150F LCD Screen Replacement

The Samsung WB150F will be taken apart and the LCD screen will be removed and replaced in this guide.

Written By: Patrick Gouveia



INTRODUCTION

This guide will teach someone how to change the LCD screen on the back of a Samsung WB150F camera.



TOOLS:

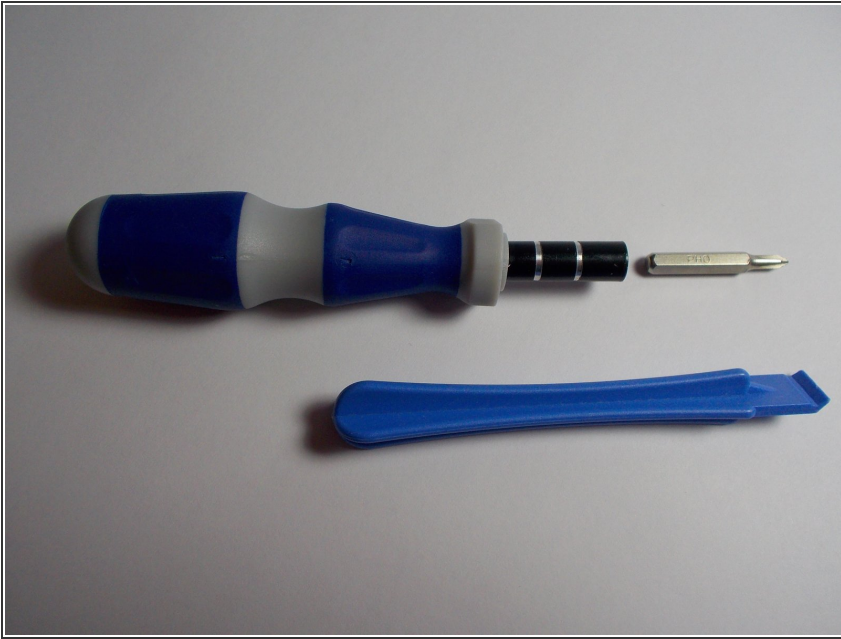
- [Phillips #0 Screwdriver](#) (1)
- [iFixit Opening Tools](#) (1)



PARTS:

- [LCD Screen for Samsung WB150](#) (1)

Step 1 — LCD Screen



- Gather a PHO Phillips head screwdriver and a plastic wedge. If you do not have a plastic wedge like the one pictured, a credit card or a guitar pick can be used.

Step 2



- Take off the front casing by using your screwdriver to unscrew the screws circled in each of the photos (5 total).
- The front casing can now be pulled from the camera.

Step 3



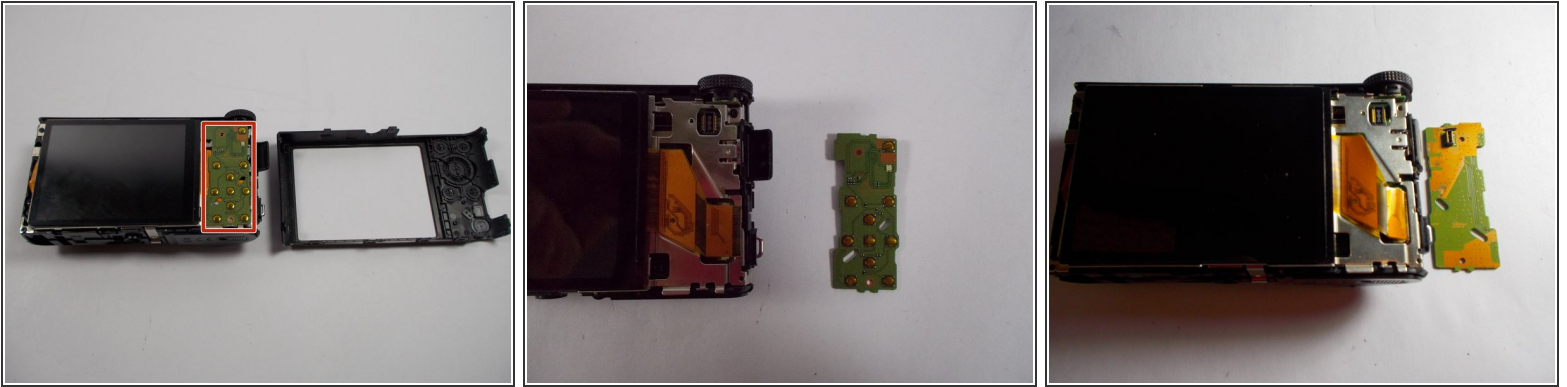
- Your camera should now look like the camera in the photo.

Step 4



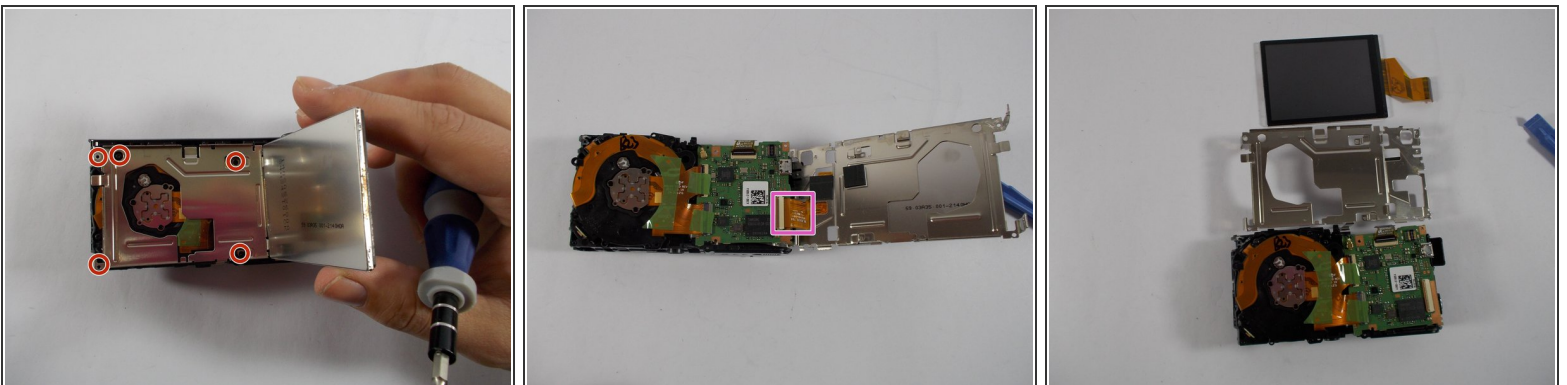
- Flip the camera over and pry the back shell of the camera off with the plastic opening tool (or credit card or guitar pick). The screen-side of your camera should now resemble the camera in the second photo.
- *Note: removing the back shell does not require removing anymore screws, it should just snap off.*

Step 5



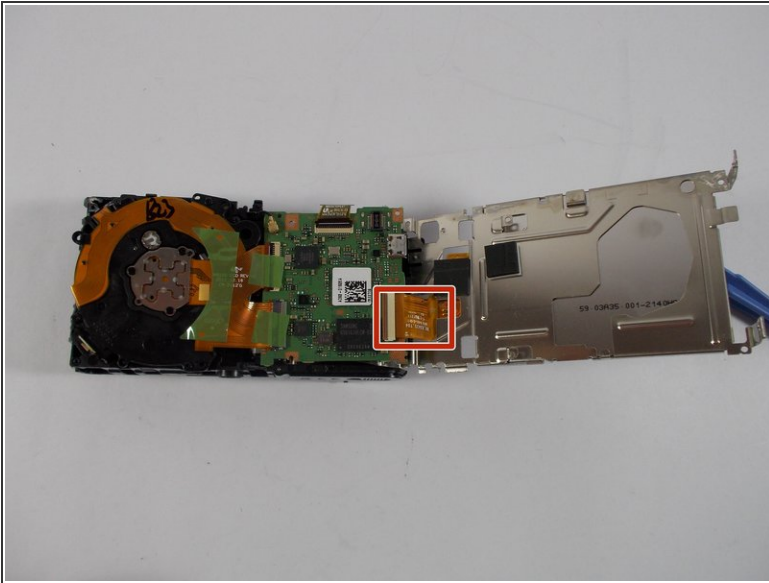
- On the screen side, remove the button circuit board (outlined in red) from the camera by using the plug located in the upper right corner of the screen side.

Step 6



- Remove the metal casing by lifting up the old screen and unscrewing the 5 screws circled in the first photo.
- The LCD screen has a ribbon going to the main circuit board, as shown in the second photo, that needs to be detached.
- Your camera should now resemble the third photo.

Step 7



- The new screen is now ready to be attached. Plug the replacement screen into the main circuit board in the spot outlined in the first photo.
- Then re-attach the metal casing by aligning it with the screw holes and replacing the screws removed in step 5.
- The screen can now be placed in its original position.
- Repeat steps 2-5 in reverse order to reassemble the camera.

To reassemble your device, follow steps 1-5 in reverse order.