



Samsung WB150F Memory Card Replacement

How to replace a Samsung WB150F memory card.

Written By: Keith Albergaria



Step 1 — Memory Card



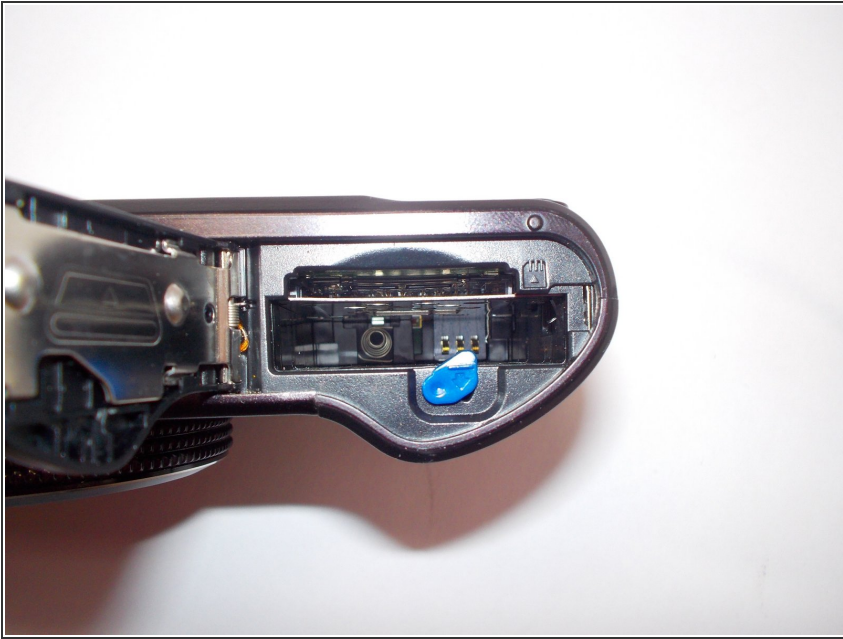
- Flip the camera upside-down so that the compartment with the battery and memory card is facing you.

Step 2



- Using your finger, slide the plastic lock-tab to the left.
- The compartment should swing open.

Step 3



- ① The larger cavity is for the battery.
- ① The small thin cavity is where the memory card goes.
- Press lightly on the memory card to eject it from the camera.

To reassemble your device, follow these instructions in reverse order.