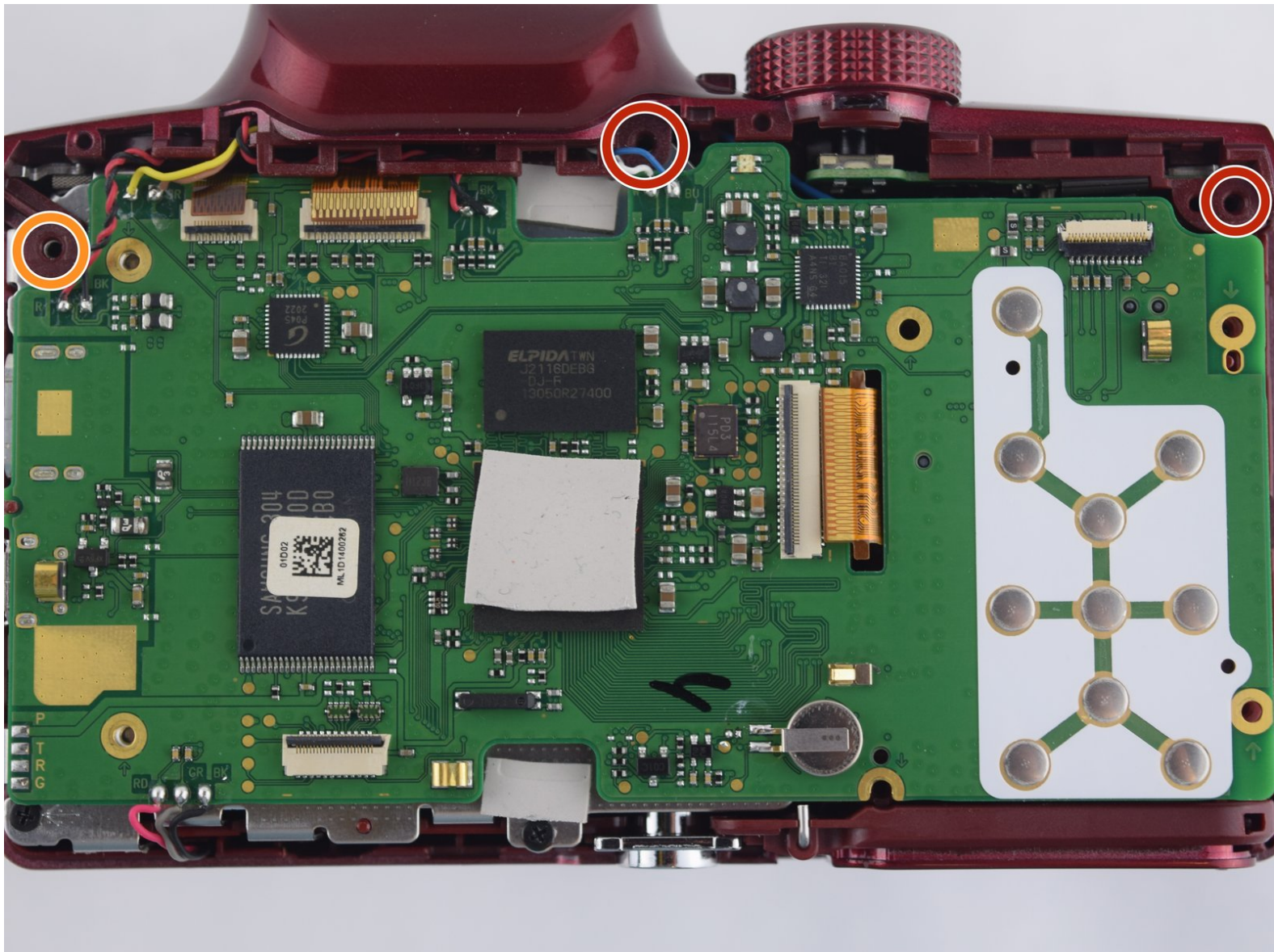




Samsung WB2100 Flash Assembly Replacement

This guide will show how to replace the flash assembly of the Samsung WB2100.

Written By: McGregor Coyne



INTRODUCTION

Is your flash not working anymore? This guide will show you how to replace the entire flash assembly and light up your pictures.

TOOLS:

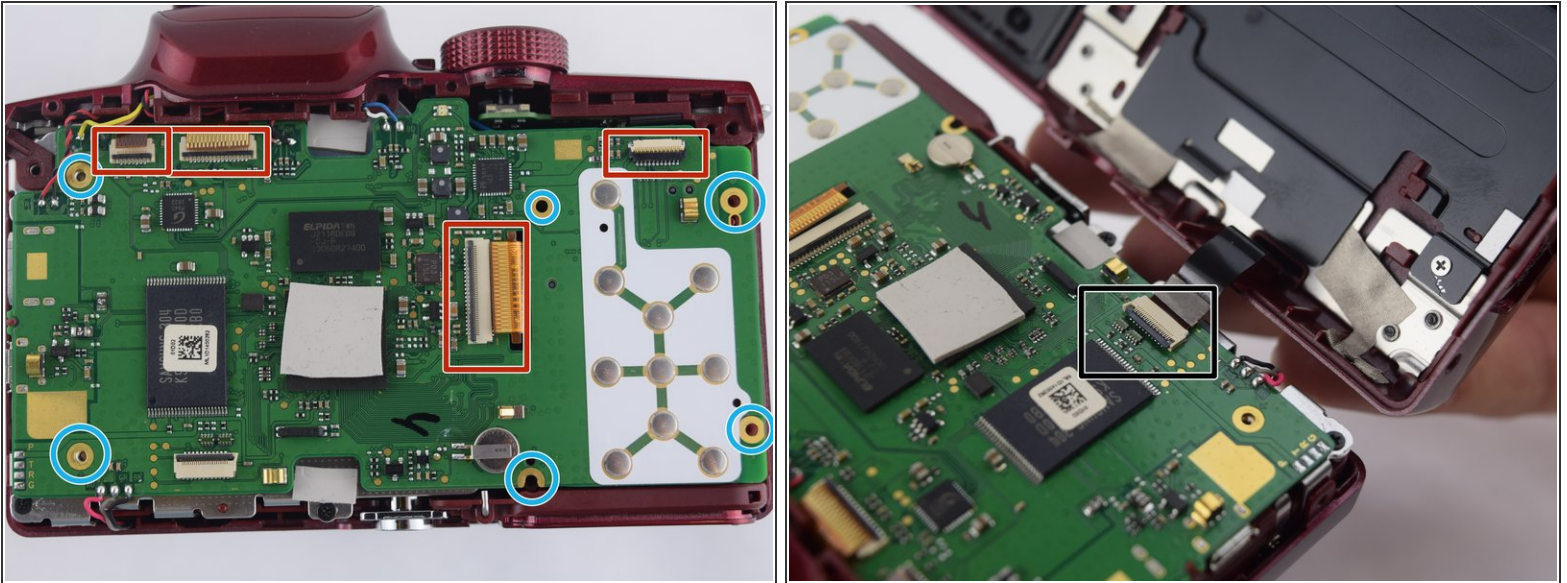
- [Phillips #000 Screwdriver](#) (1)
 - [Spudger](#) (1)
 - [Pro Tech Toolkit](#) (1)
 - [Soldering Iron](#) (1)
-

Step 1 — Back Cover Assembly



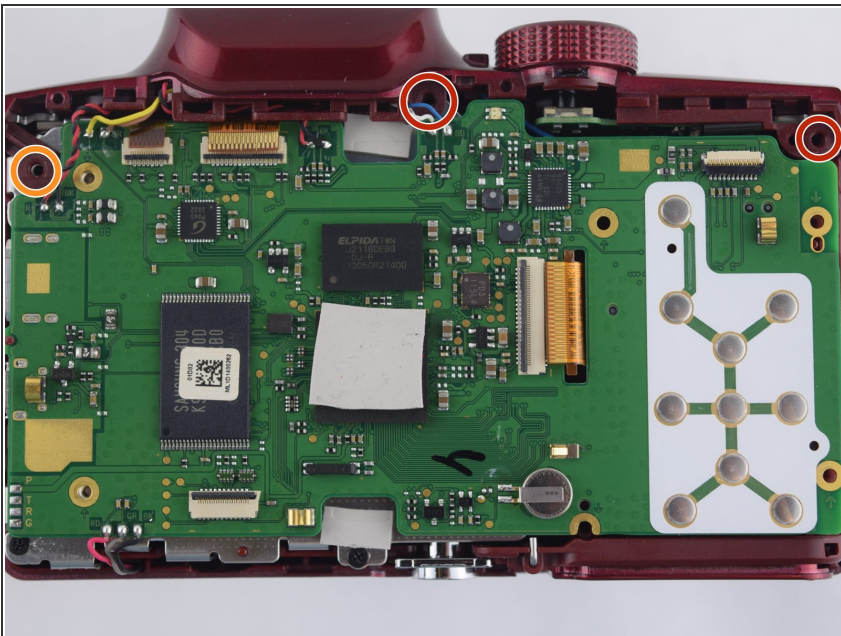
- Remove the 7 screws on the outside of the camera
 - Two 5 mm PH000 screws on the right side of the camera body
 - Four 3mm PH000 screws on the bottom and the left side of the camera body.
- Use the plastic spundger to push the back casing out. Start from the right side and work your way clockwise around the case.
- ⓘ The HDMI / AV tab might fall out. this is supposed to happen as it is not screwed into place in the back casing.

Step 2



- Disconnect the set of wires from the back casing to the motherboard. Do this by using the plastic spundger to flip the black tab up and the wires will pull out.
- Unscrew the four 3 mm and two silver 1 mm PH000 screw from the green logic board

Step 3 — Flash Assembly



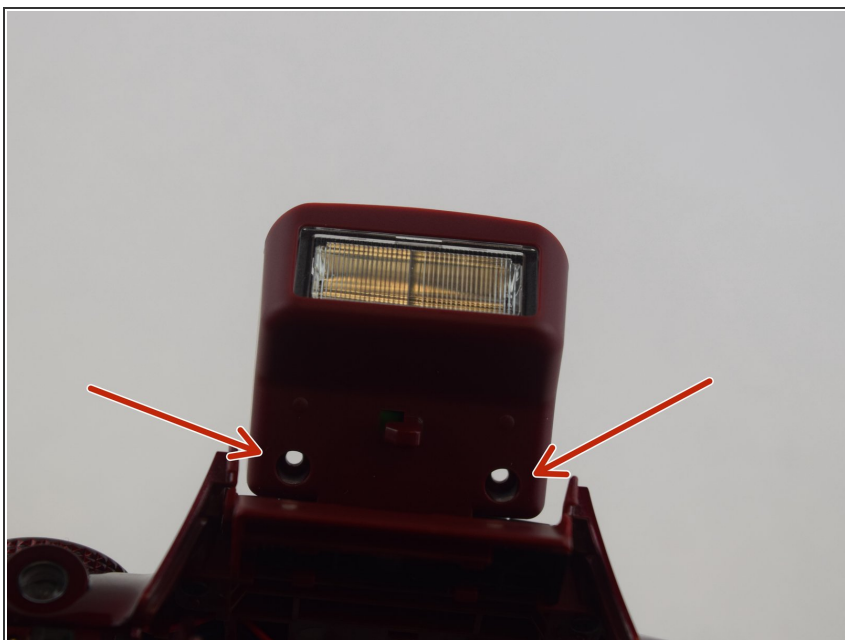
- Unscrew the two 3 mm screws from the top cover with the PH000 driver.
- Along with the one 2 mm screw, also a PH000 screw.

Step 4



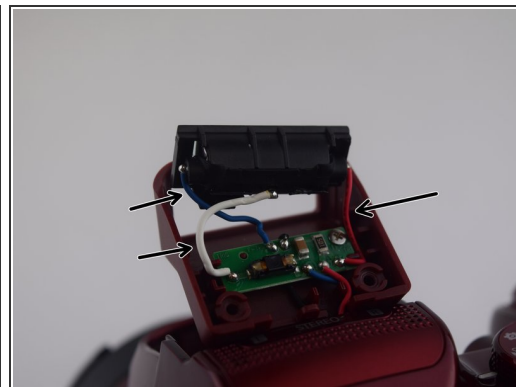
- Use the spudger and pry the top cover off starting on the left side and working your way down.

Step 5



- After the top is disconnected, fold it back so the two PH000 flash screws are accessible and remove the cover.

Step 6



- Remove the flash bulb from the red housing and clear cover. Do this by pushing back the flash bulb back out of the red housing.
 - ☑ When reassembling make sure the tab on the flash cover faces up.
- Desolder the wires from the circuit board. Learn more about soldering [here](#).

To reassemble your device, follow these instructions in reverse order.