



Samsung WB2200F Face-plate Replacement

This guide will describe how to remove the face-plate

Written By: James Julian



INTRODUCTION

This guide will show how to remove the face-plate of the Samsung WB2200F, and can be used to replace a broken face-plate or replace internal components of the camera



TOOLS:

- [JIS Driver Set](#) (1)
-

Step 1 — Battery



- Place the camera upside down on a hard surface such as a table. Make sure that the battery compartment is visible.

Step 2



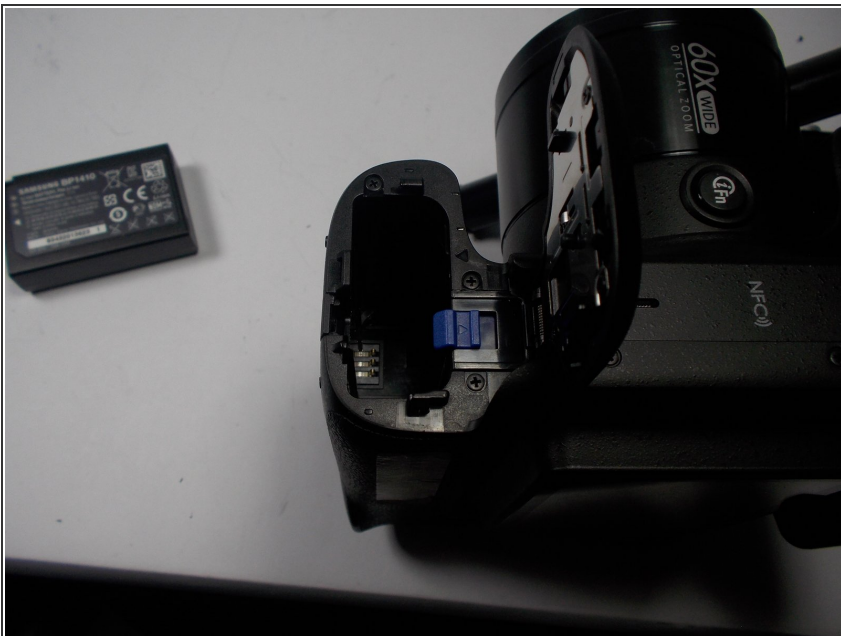
- Twist the nob counter-clockwise while pushing cover to the left. Then pull the cover up to reveal the battery.

Step 3



- Slide the blue tab to the right to release the battery.

Step 4



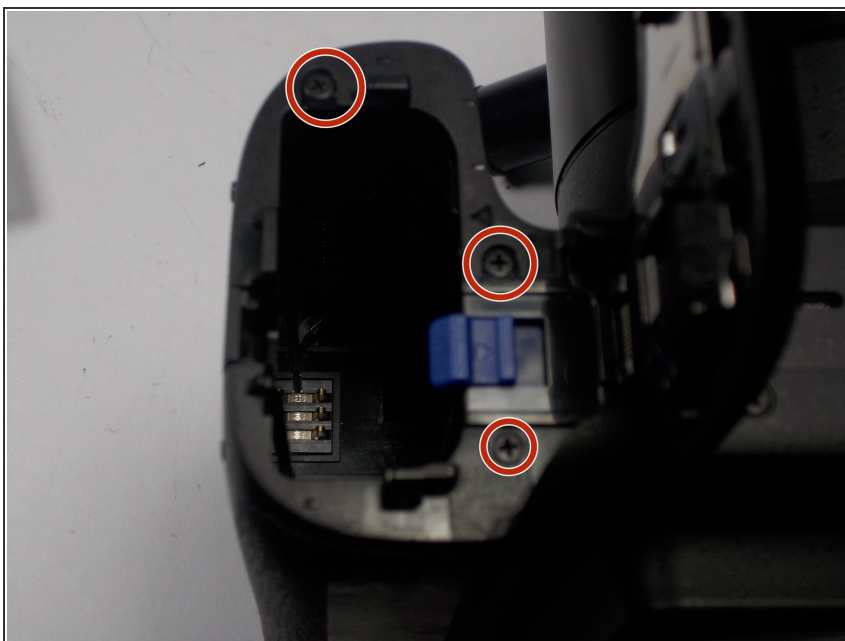
- Carefully slide the battery out of the camera. It can then be replaced with a new battery.

Step 5 — Face-plate



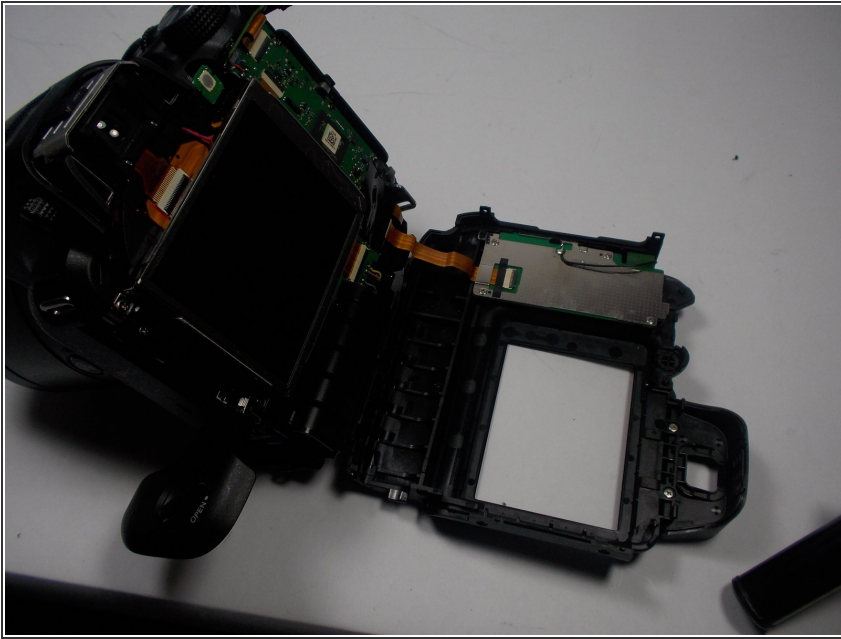
- Remove the 6mm screws located on the bottom and sides of the camera using the using the screw driver with the JIS size 000 head.

Step 6



- Remove the two 6mm screws located underneath the battery cover using the same screw driver with the JIS size 000 head.

Step 7



- Carefully pry the face-plate away from the body of the camera, starting from the battery compartment. It should come off without too much trouble, although it may require force.
- ⓘ Make sure to not damage any of the electronic components of the camera

To reassemble your device, follow these instructions in reverse order.