



Samsung WB2200F Flash Option Button Replacement

If the flash does not go off when a photo is taken, the flash option button may be jammed or broken.

Written By: Rachelle



INTRODUCTION

Using this repair guide, the user will be able to replace the flash option button on the device.



TOOLS:

- [JIS Driver Set](#) (1)
-

Step 1 — Battery



- Place the camera upside down on a hard surface such as a table. Make sure that the battery compartment is visible.

Step 2



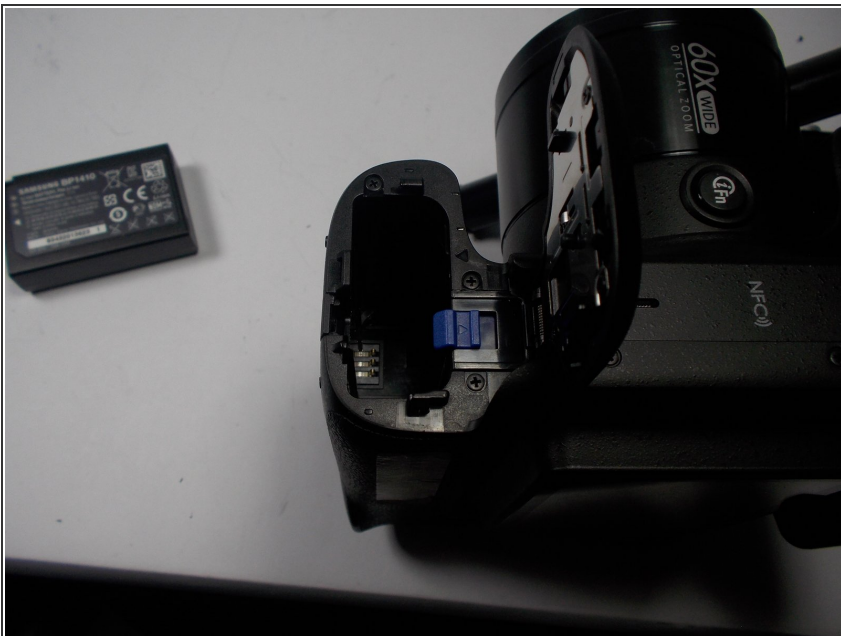
- Twist the nob counter-clockwise while pushing cover to the left. Then pull the cover up to reveal the battery.

Step 3



- Slide the blue tab to the right to release the battery.

Step 4



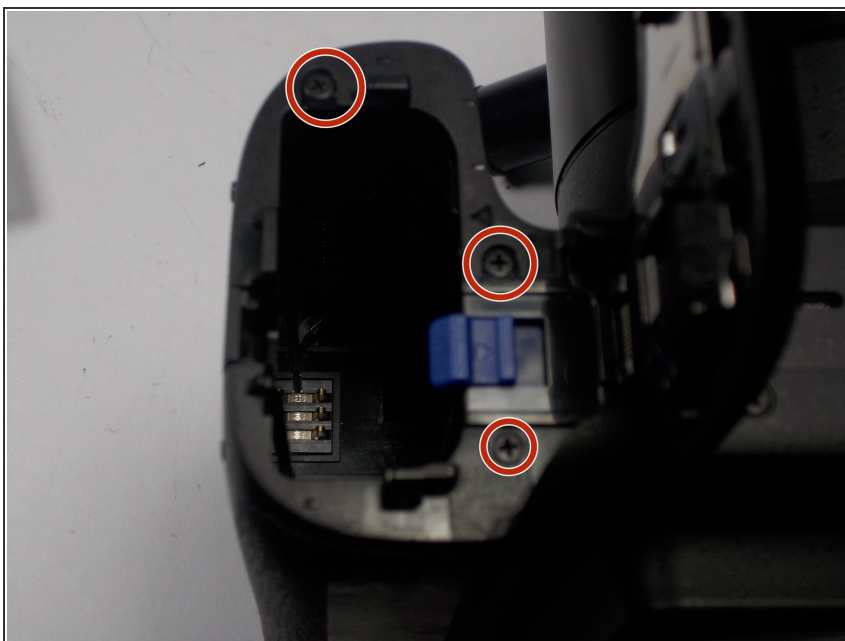
- Carefully slide the battery out of the camera. It can then be replaced with a new battery.

Step 5 — Face-plate



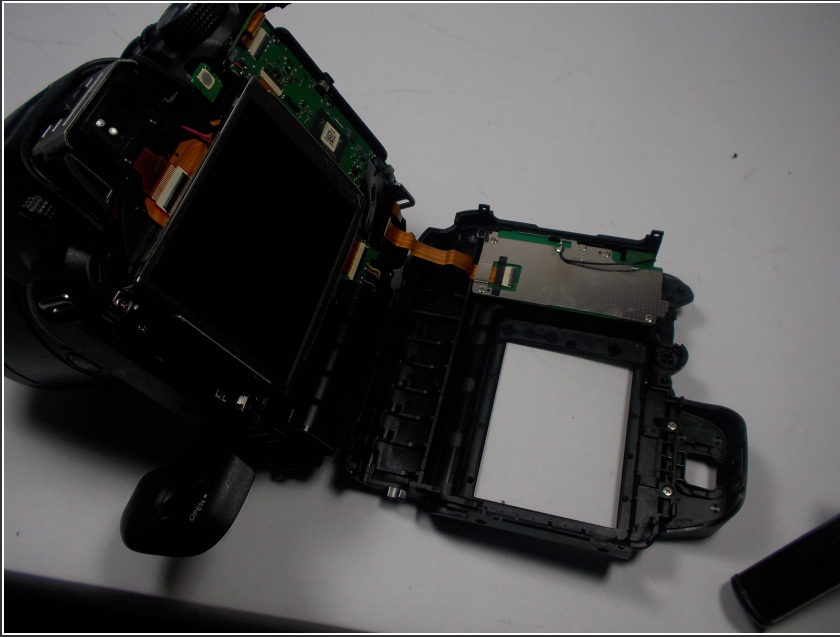
- Remove the 6mm screws located on the bottom and sides of the camera using the using the screw driver with the JIS size 000 head.

Step 6



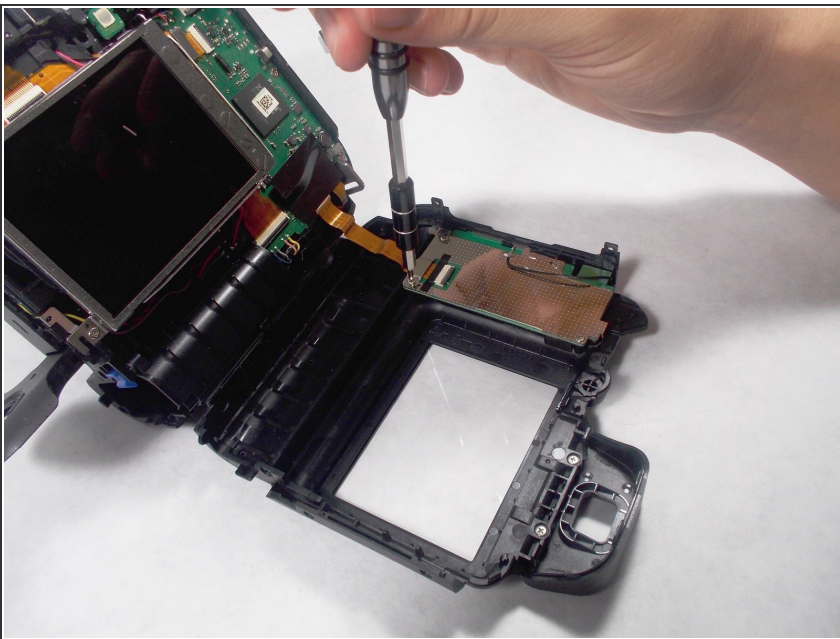
- Remove the two 6mm screws located underneath the battery cover using the same screw driver with the JIS size 000 head.

Step 7



- Carefully pry the face-plate away from the body of the camera, starting from the battery compartment. It should come off without too much trouble, although it may require force.
- ⓘ Make sure to not damage any of the electronic components of the camera

Step 8 — Flash Option Button



- Looking at the back of the exposed face plate, remove the four 5mm screws, that hold down the metal

cover, using the screw driver with the JIS size 000 head.

Step 9



- Gently lift off the metal cover.

Step 10



- Clean out any dust or debris from the button interface.
- Replace faulty button.

To reassemble your device, follow these instructions in reverse order.