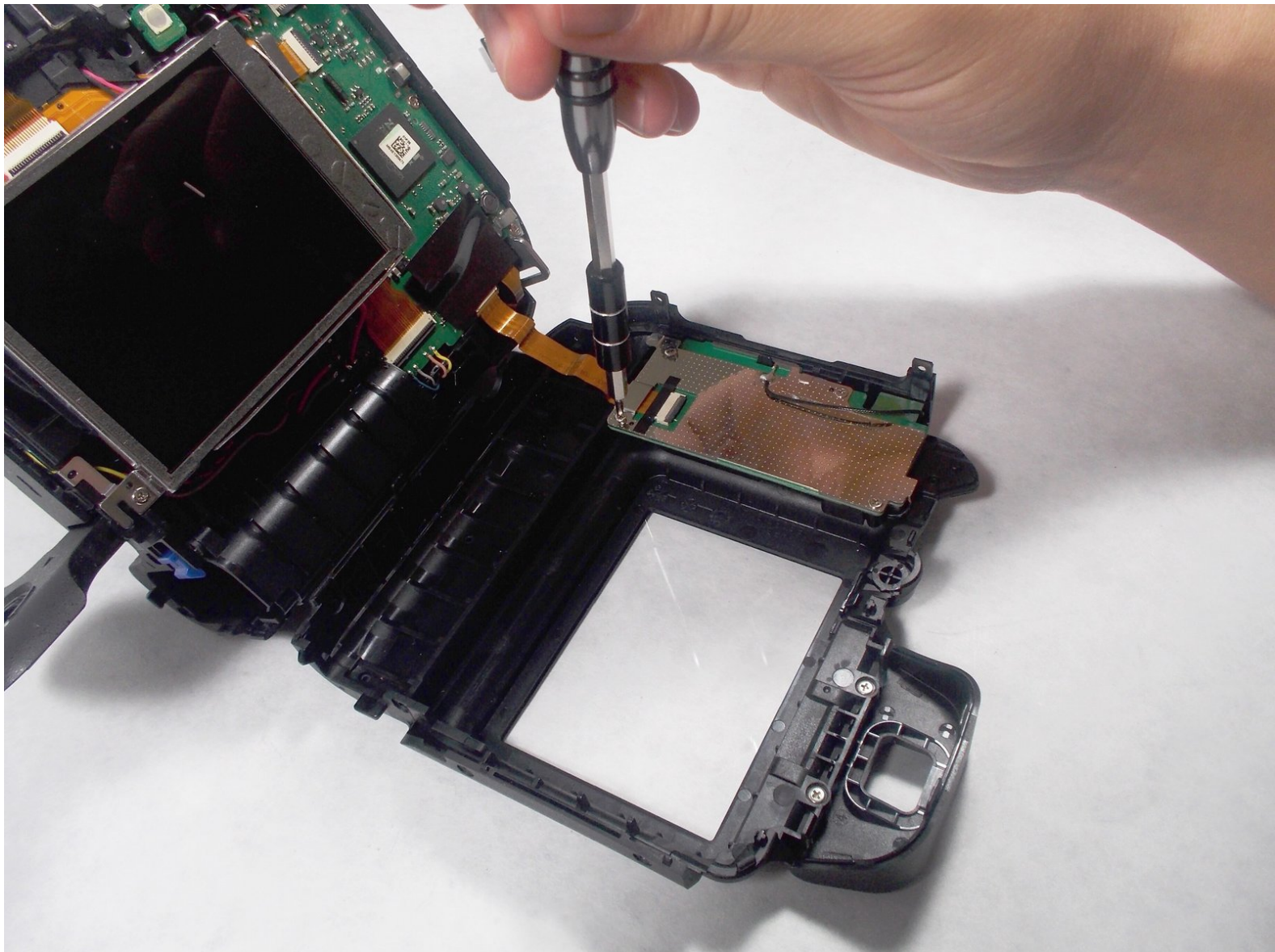




Samsung WB2200F Record Button Replacement

This is the circular button on the top of the face plate serves the purpose of recording videos.

Written By: Rudolf Boampong





TOOLS:

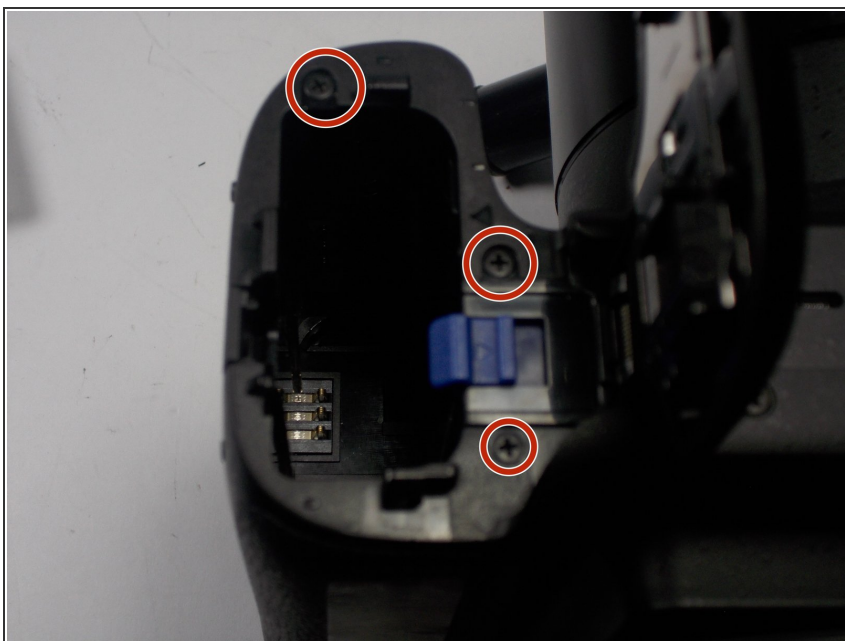
- [JIS Driver Set](#) (1)
-

Step 1 — Face-plate



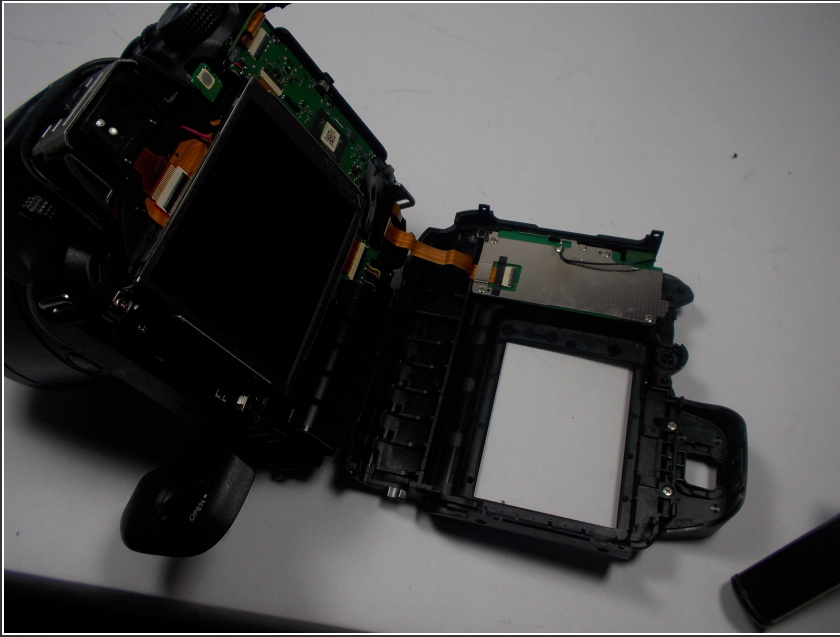
- Remove the 6mm screws located on the bottom and sides of the camera using the using the screw driver with the JIS size 000 head.

Step 2



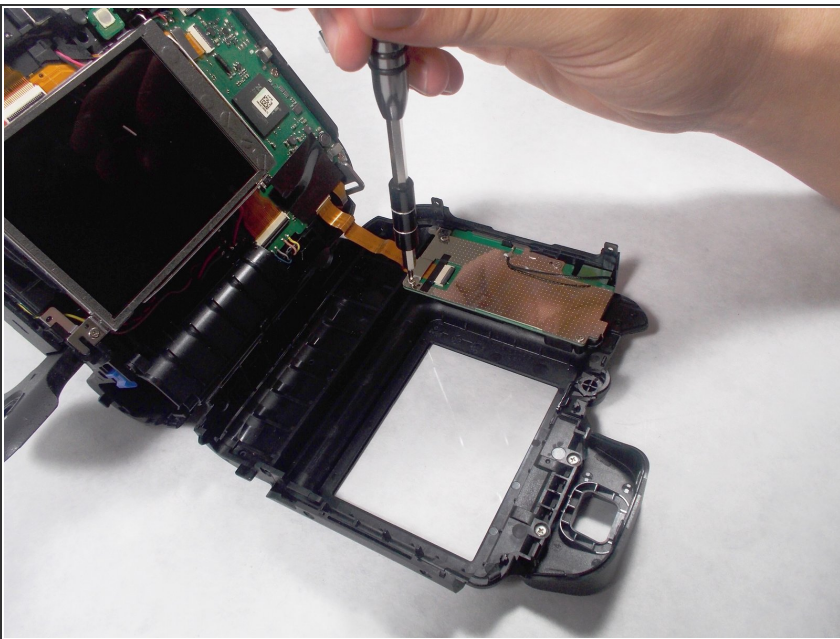
- Remove the two 6mm screws located underneath the battery cover using the same screw driver with the JIS size 000 head.

Step 3



- Carefully pry the face-plate away from the body of the camera, starting from the battery compartment. It should come off without too much trouble, although it may require force.
- ⓘ Make sure to not damage any of the electronic components of the camera

Step 4 — Record Button



- Open up the camera by removing the four 6 mm screws, that hold down the metal cover, using the

screw driver with the JIS size 000 head.

Step 5



- Gently lift off the metal cover.

Step 6



- Clean out any dust or debris from the button interface.
- Replace faulty button.

To reassemble your device, follow these instructions in reverse order.