



# Samsung WB350F Menu/Control Buttons Replacement

This guide will walk you through replacing the control/menu buttons.

Written By: Taylor Joubert



# INTRODUCTION

If your control/menu buttons aren't working on your camera, this guide will walk you through replacing them.



## TOOLS:

- [Phillips #000 Screwdriver](#) (1)
  - [iFixit Opening Tools](#) (1)
-

## Step 1 — Rear Case



- Remove the wristlet strap.

**i** If you have difficulties use your plastic spudger. If you don't have a plastic spudger, you can also use a pen/pencil.

## Step 2



- Remove five 3.2 mm screws with a Phillips #000 Screwdriver.

**i** There is one silver screw on the bottom and two black screws on each side.

**✦** Keep the screws together for an easier re-assembly later.

## Step 3



- Open the case of the camera using your plastic opening tool.
- Start on each end, working the tool into the opening and popping the casing up. Then work your way down the longer sides (top and bottom).
- ⓘ If you don't have plastic opening tools, any flat plastic object, like a used gift card, can be used as an improvised alternative.

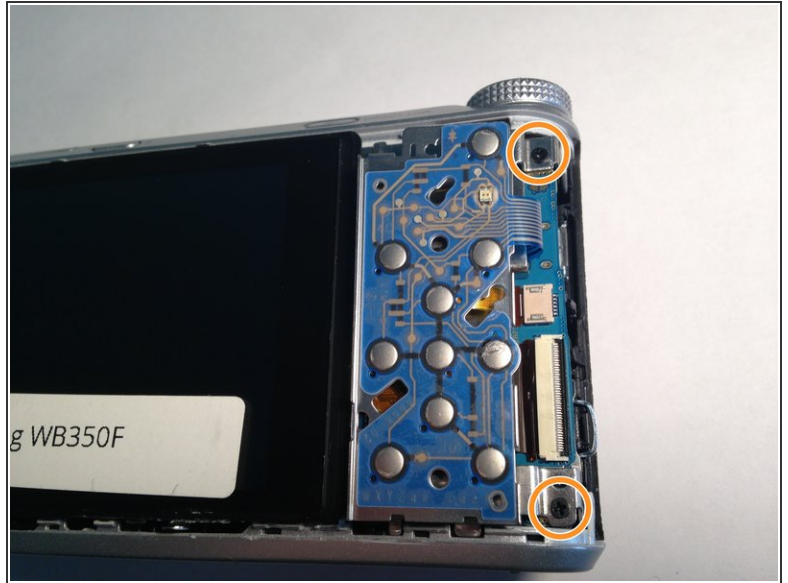
## Step 4



- Remove the plastic casing, exposing the inner workings of the camera.

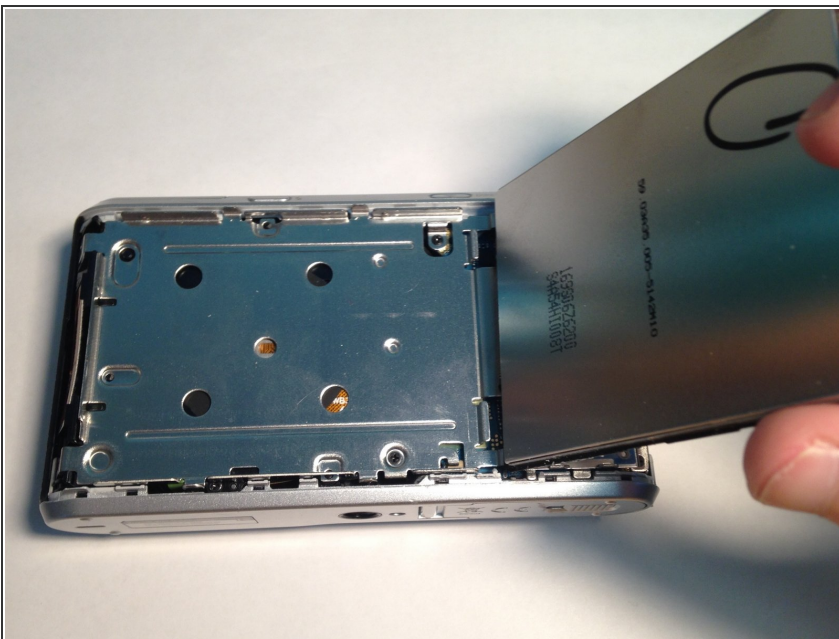


## Step 5 — Screen



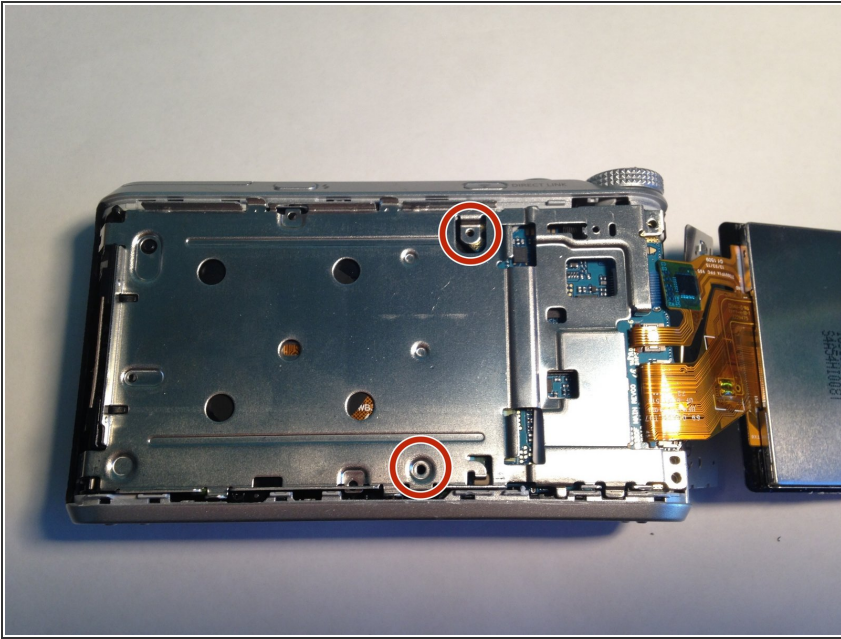
- Using your Phillips #000 Screwdriver, remove one 3.2 mm screw above the menu buttons panel.
- Next, remove the two 3.2 mm Phillips #000 screws to the left of the menu buttons panel.

## Step 6



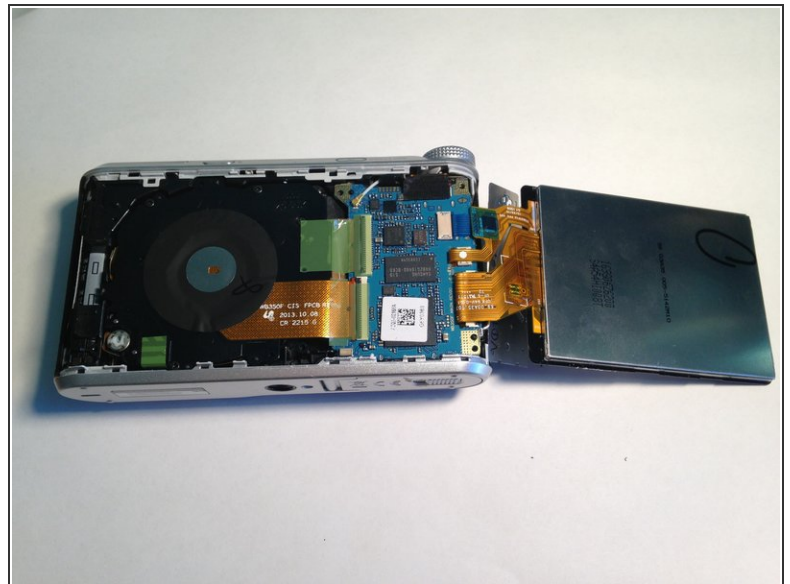
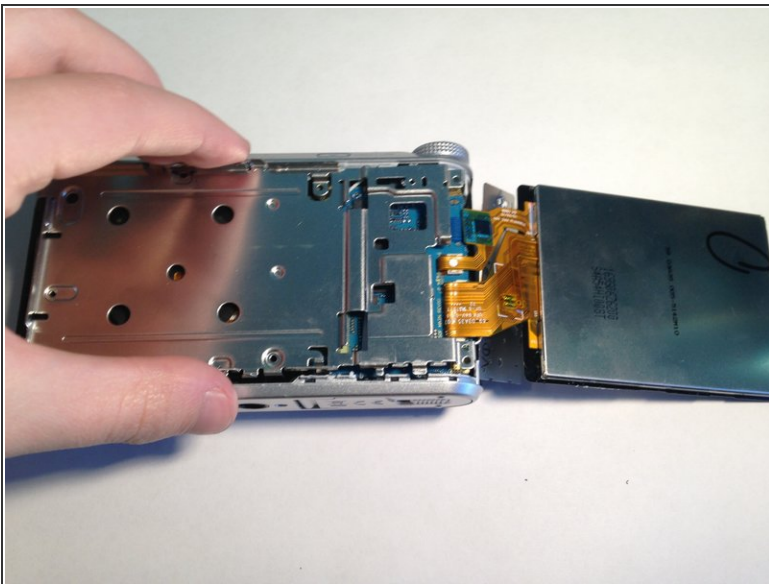
- Move the menu button panel to the right as well as the screen.
- ⚠ Be careful because each are connected to the camera by a ribbon.

## Step 7



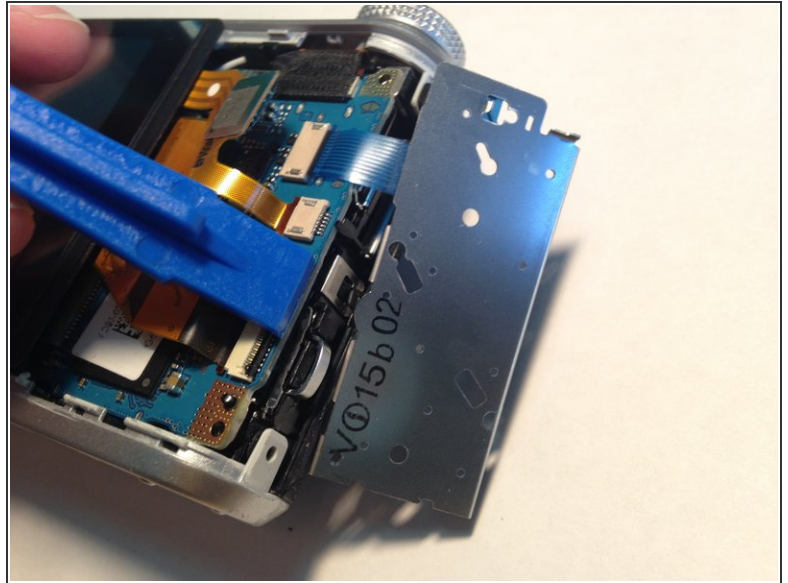
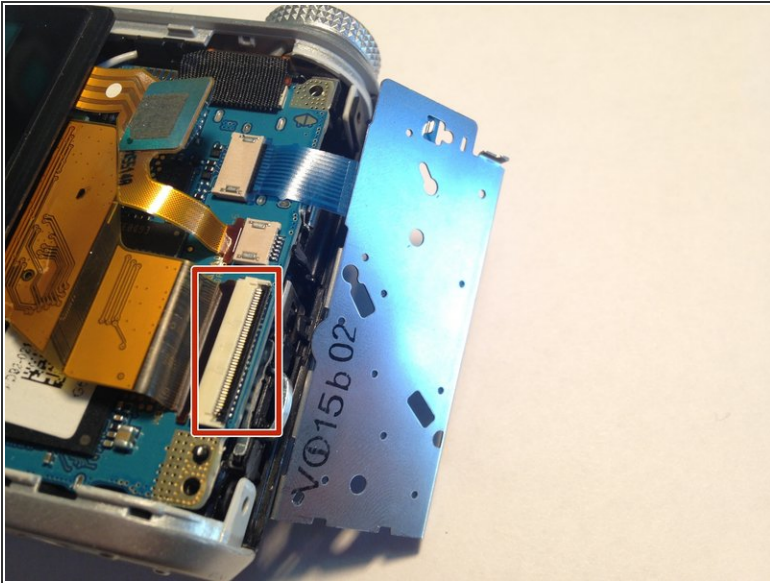
- Remove two more 3.2 mm screws on the silver panel using your Phillips #000 Screwdriver.

## Step 8



- Remove the silver panel.

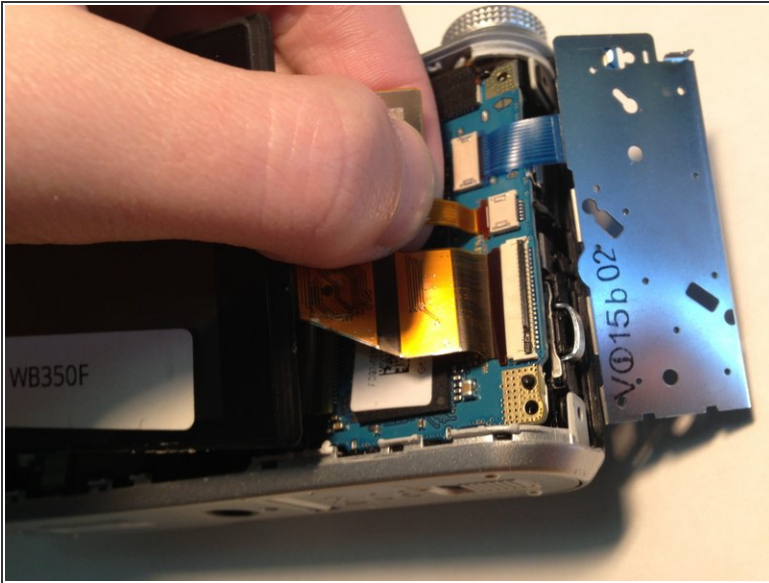
## Step 9



- Flip the screen back over.
- Using the plastic open tool, flip open the black retaining plastic piece holding the larger ribbon in place.

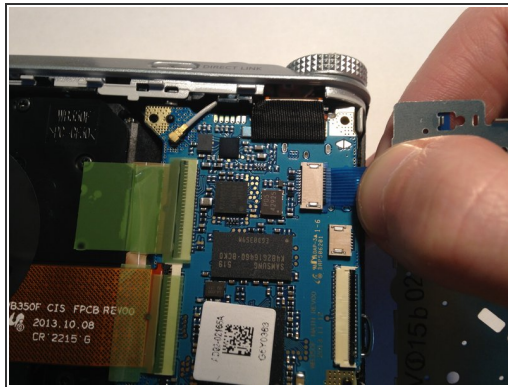
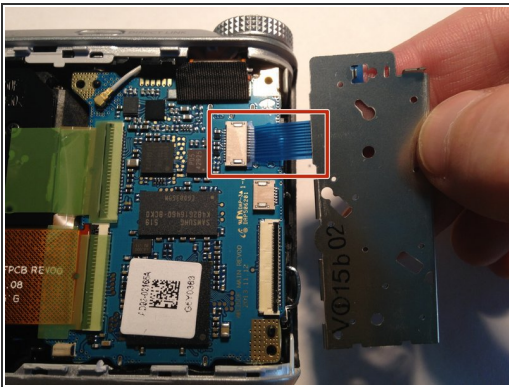


## Step 10



- Carefully detach both ribbons by gently pulling one at a time.
- ⓘ The thinner ribbon isn't secured with a connector and you are able to pull it straight out.
- ⚠ Be sure to pull gently as you do not want to break either ribbon.

## Step 11 — Menu/Control Buttons



- Gently pull the ribbon in order to remove the menu/control button panel.
- ⓘ The ribbon isn't secured with a connector and you are able to pull it straight out.

To reassemble your device, follow these instructions in reverse order.



