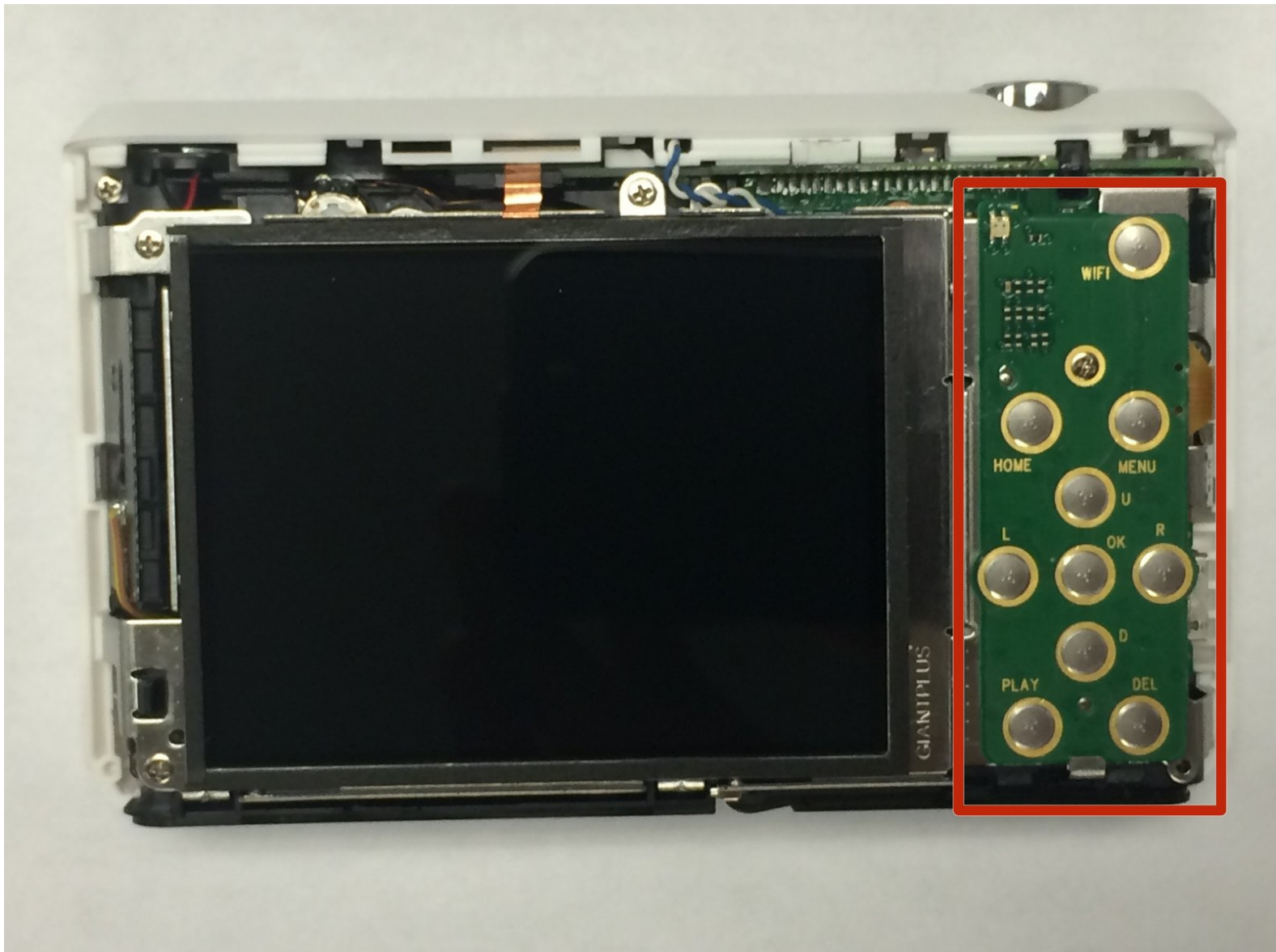




Samsung WB35F Menu/Control Buttons Replacement

This guide will help you to replace the Menu/Control Buttons of the Samsung WB35F.

Written By: Sarmad Khan



INTRODUCTION

This guide will give the user step by step instructions on how to replace Menu/Control Buttons of the camera.



TOOLS:

- [Phillips #00 Screwdriver](#) (1)
 - [Phillips #000 Screwdriver](#) (1)
 - [iFixit Opening Tools](#) (1)
 - [Tweezers](#) (1)
-

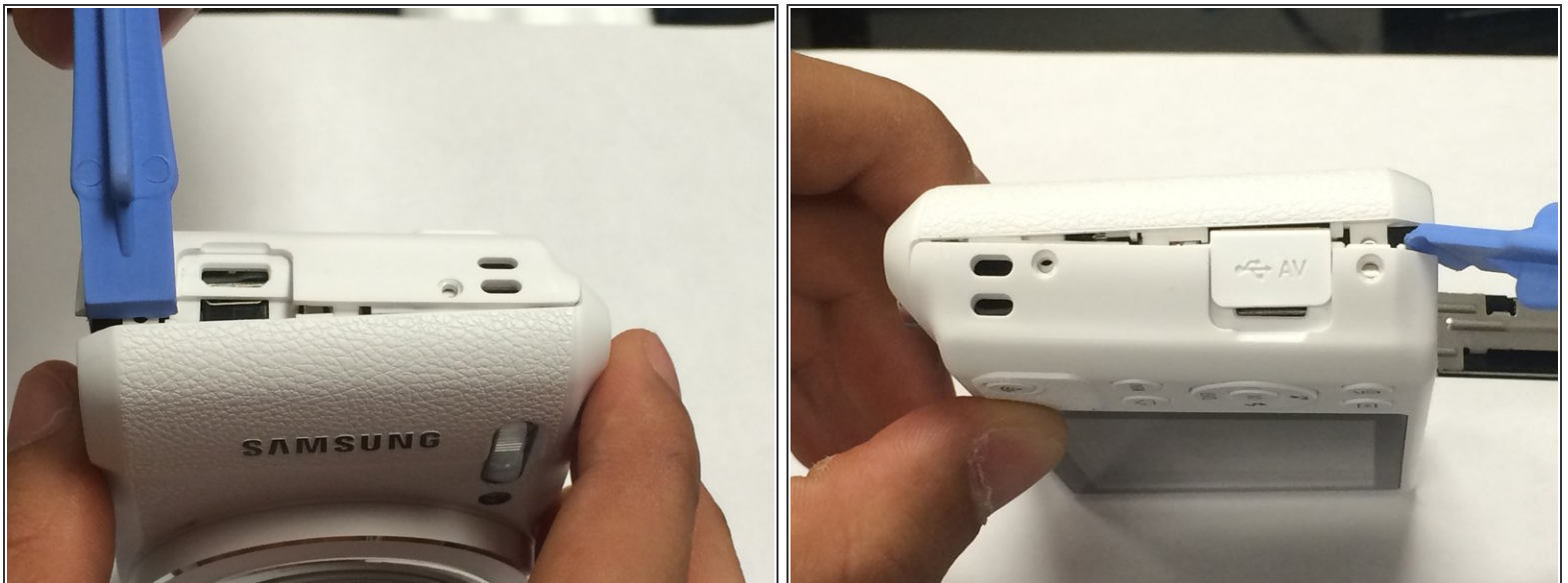
Step 1 — Rear Case



- The first thing to do will be unscrew all the screws using Phillips #000 Screwdriver.

⚠ Keep all the screws in order. Black screws goes under the bottom of camera, and the silver screws goes on the sides and inside of the camera.

Step 2



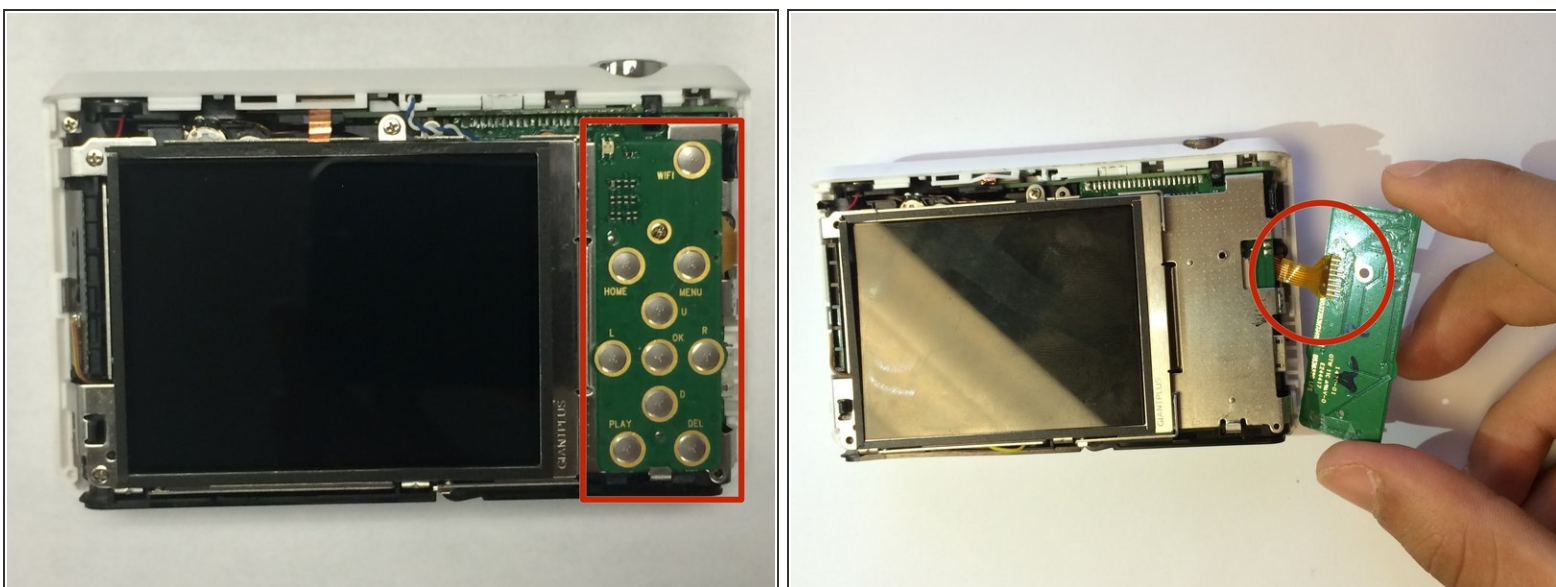
- Using the spudger, and plastic opening tool open the casing of camera.

Step 3



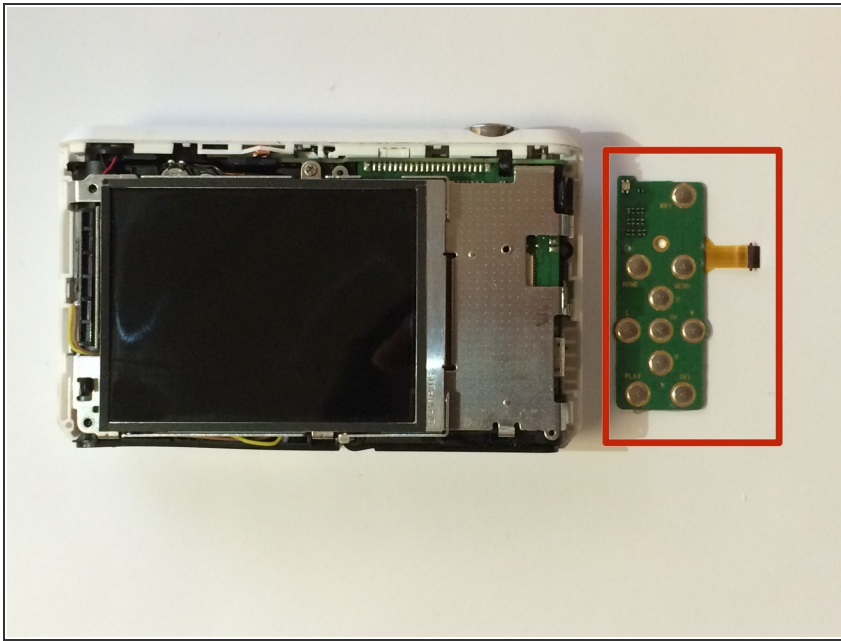
- Once you open the camera case, you will be able to work on any part of the camera.

Step 4 — Menu/Control Buttons



- Carefully unplug the ribbon from the Menu/Control board.

Step 5



- Once you unplug the ribbon. Take out the old board and replace it with new menu/control board.

To reassemble your device, follow these instructions in reverse order.