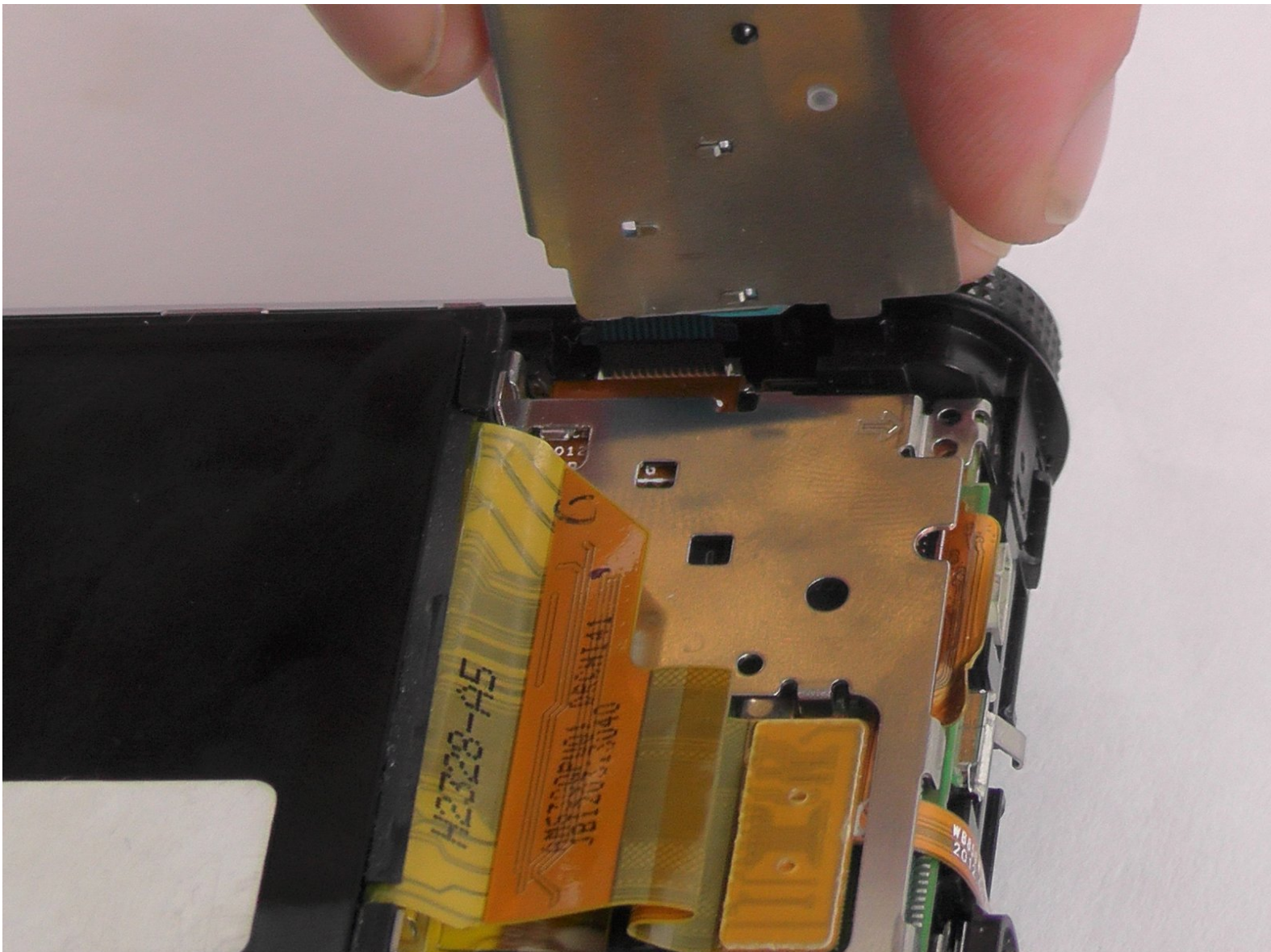




# Samsung WB850F Control Panel Replacement

This guide will show someone how to replace the control panel.

Written By: Jousling Vazquez





## TOOLS:

- [Phillips #0 Screwdriver](#) (1)
-

## Step 1 — Control Panel



- Use the Phillips #0 screwdriver to remove the six outside screws. Orientation is from the front of the camera.
- 2 screws are located on the bottom.
- 2 screws are located on the left side. (HDMI port)
- 2 screws are located on the right side of the camera. (Opposite HDMI side)

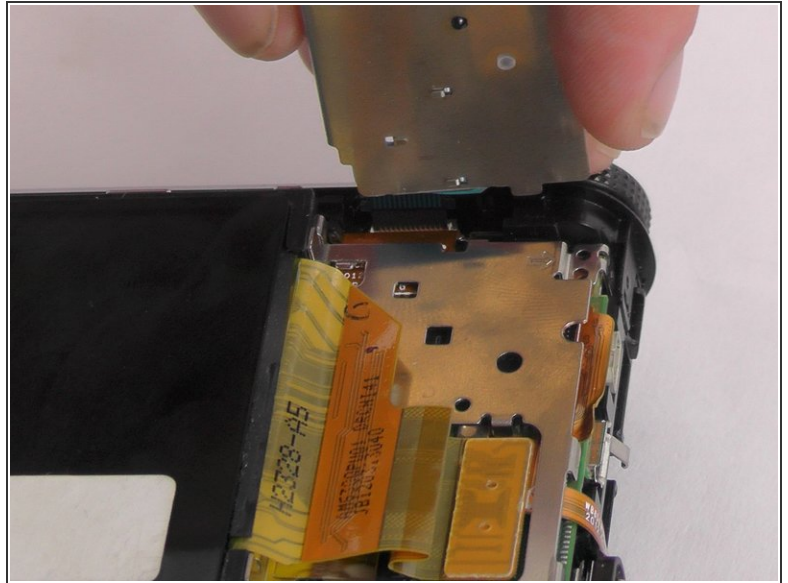
## Step 2



- To remove the back screen case, use the blue opening tool to open the case up from the right side.



## Step 3



- Use screwdriver to remove control panel screw.
- Lift up control panel from the side where the screw was just removed.

To reassemble your device, follow these instructions in reverse order.