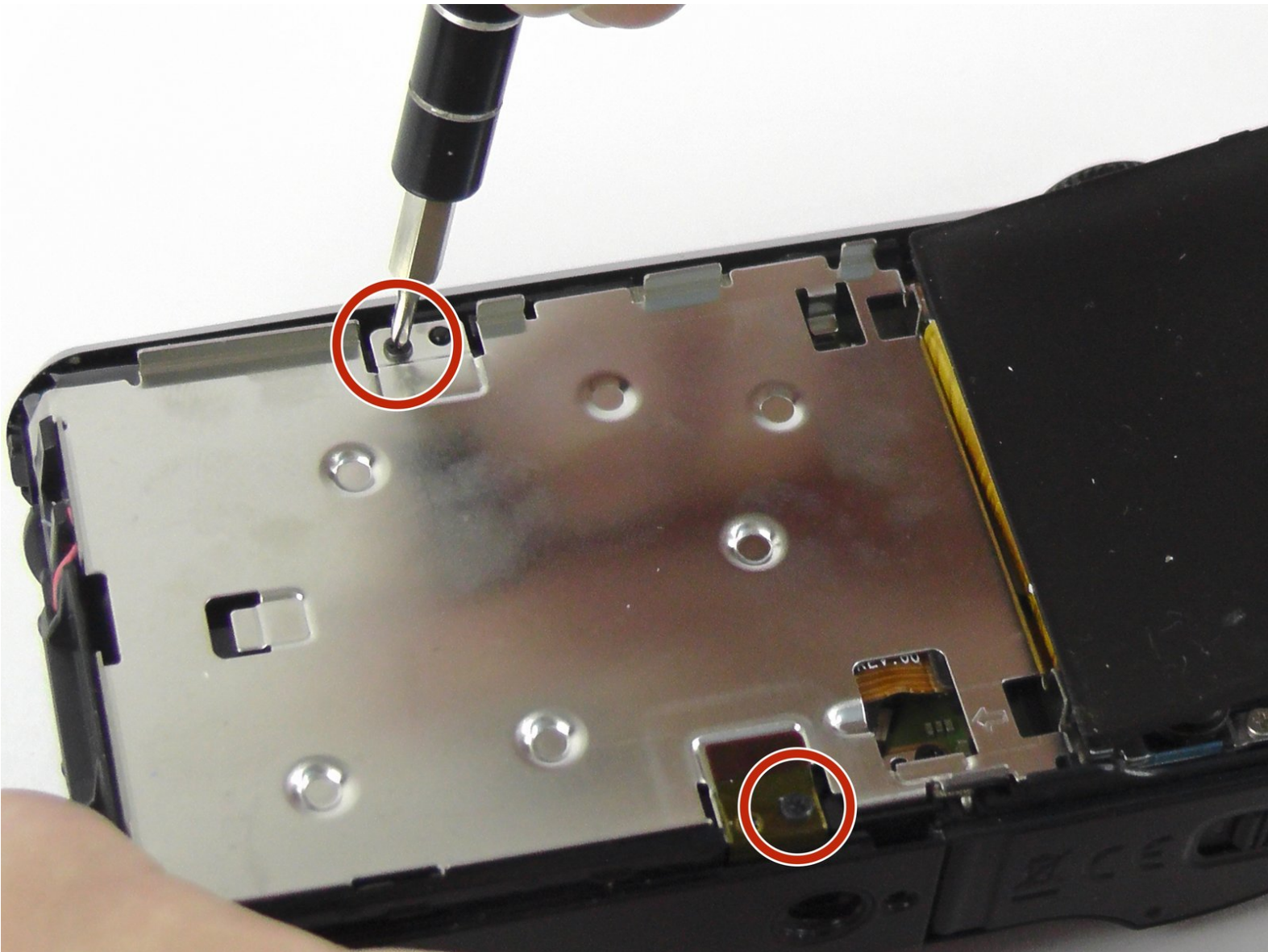




# Samsung WB850F Lens Assembly Replacement

This guide will help to replace Samsung WB850F camera lens assembly.

Written By: Jousling Vazquez





## TOOLS:

- [Phillips #0 Screwdriver](#) (1)
-

## Step 1 — Control Panel



- Use the Phillips #0 screwdriver to remove the six outside screws. Orientation is from the front of the camera.
- 2 screws are located on the bottom.
- 2 screws are located on the left side. (HDMI port)
- 2 screws are located on the right side of the camera. (Opposite HDMI side)

## Step 2



- To remove the back screen case, use the blue opening tool to open the case up from the right side.

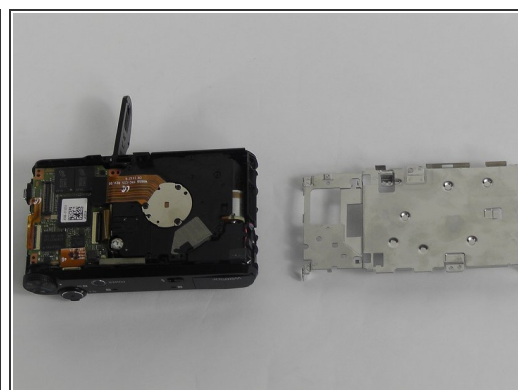
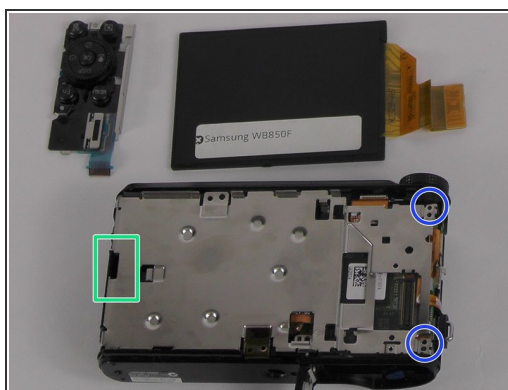
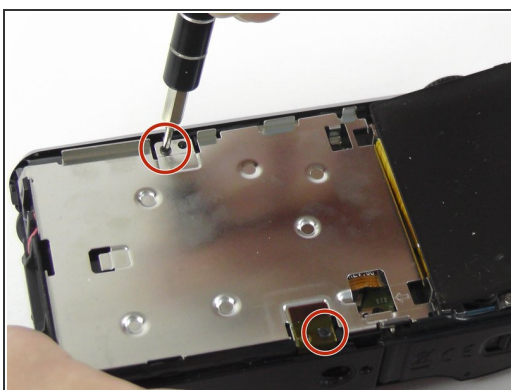


### Step 3



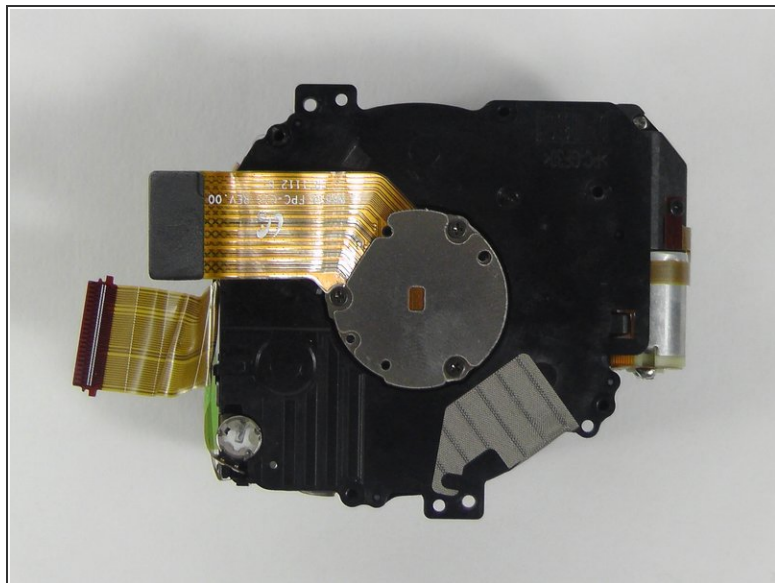
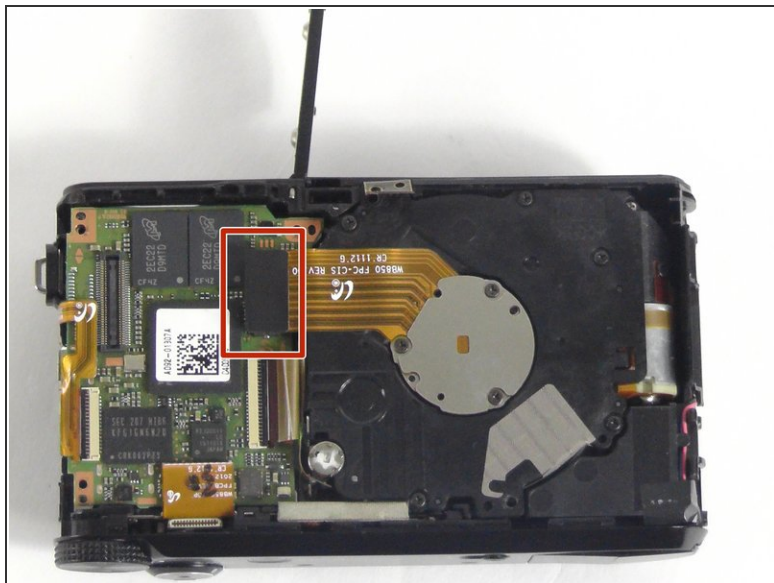
- Use screwdriver to remove control panel screw.
- Lift up control panel from the side where the screw was just removed.

### Step 4 — Lens Assembly



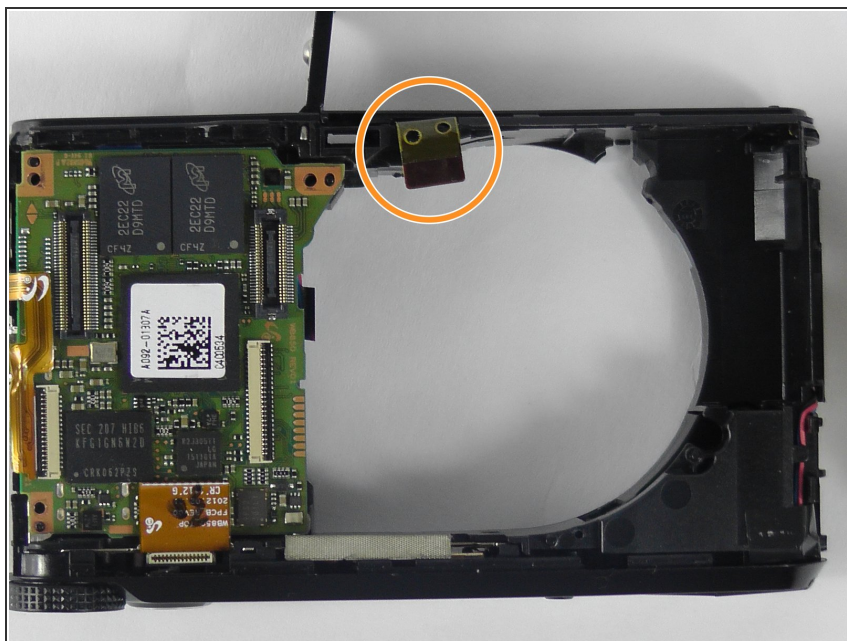
- Remove the two screws.
- Remove the two screws.
- Gently pry open metal case using Plastic tool openers.

## Step 5



- Gently pull up on the lens connector chip to remove the lens.

## Step 6



- Insert the new lens to be replaced. Make sure you do not get this tab caught while inserting new lens.

To reassemble your device, follow these instructions in reverse order.