



# Samsung Watch Active Battery Replacement

This guide will involve opening the watch and replacing the battery with another. It could also serve as a guide to open the watch to replace motherboard.

Written By: Jimi Aloba

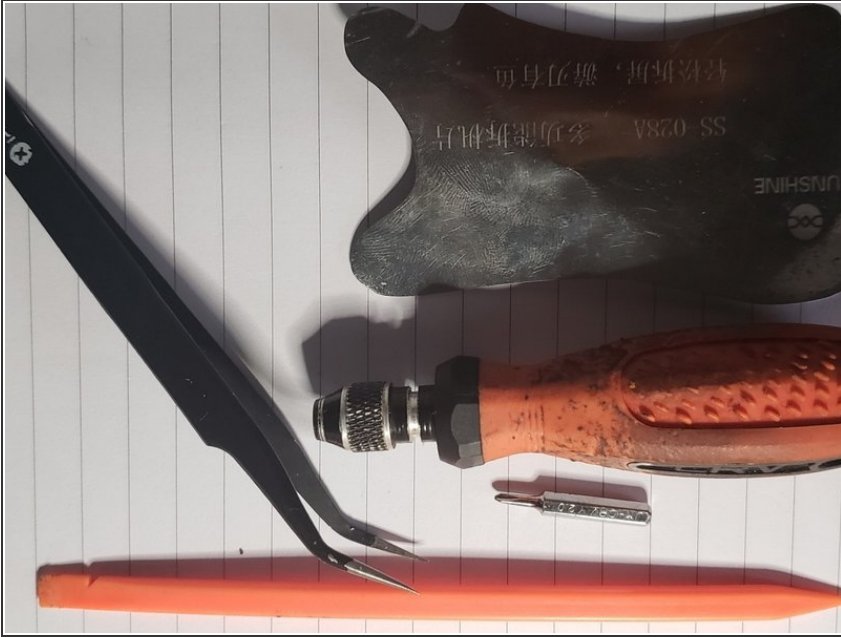




## TOOLS:

- [Spudger](#) (1)
- [Tri-point Y0 Screwdriver](#) (1)
- [1 x Opening Picks](#) (1)
- [Tweezers](#) (1)

## Step 1 — Tools



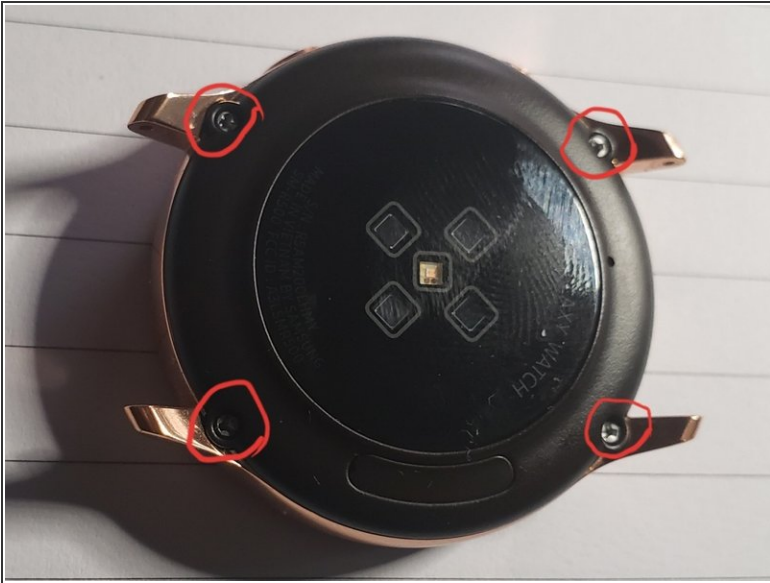
- Assemble all your tools

## Step 2



- Turn watch faced down to reveal the screws. Remove the straps by pulling on pin switches to release.

### Step 3



- remove the 4 screws

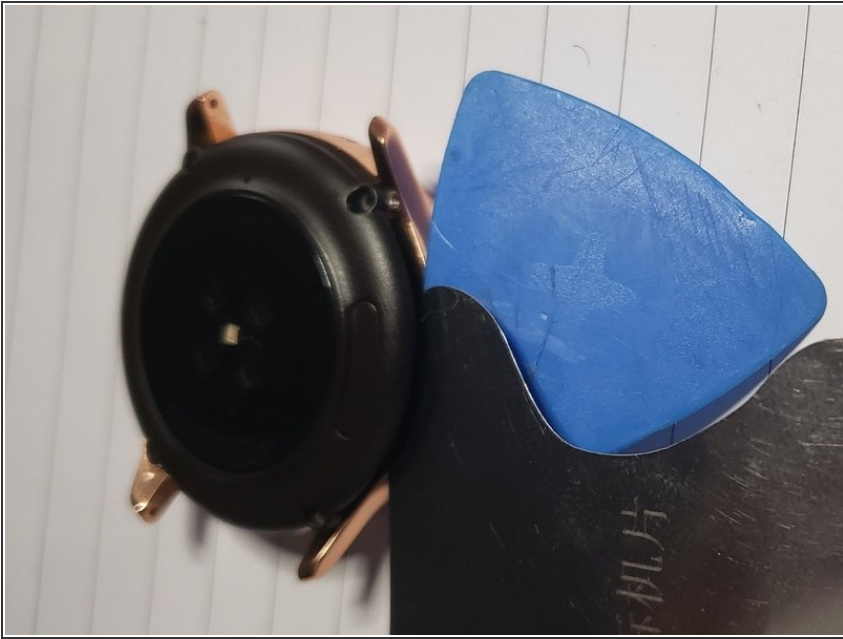
### Step 4



- Use the tin metal pry tool to gently penetrate the back.



## Step 5



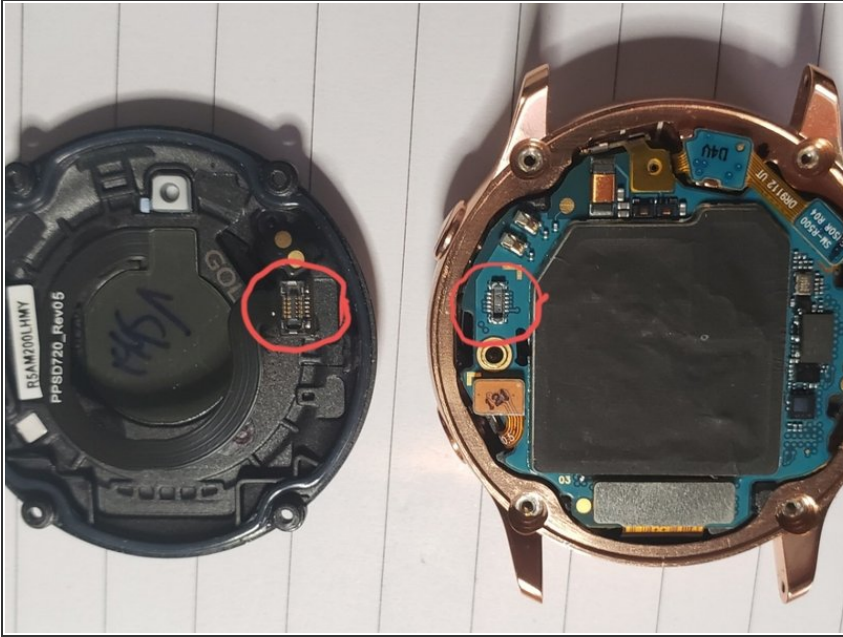
- Use the metal pry tool as support for the opening blue pick

## Step 6



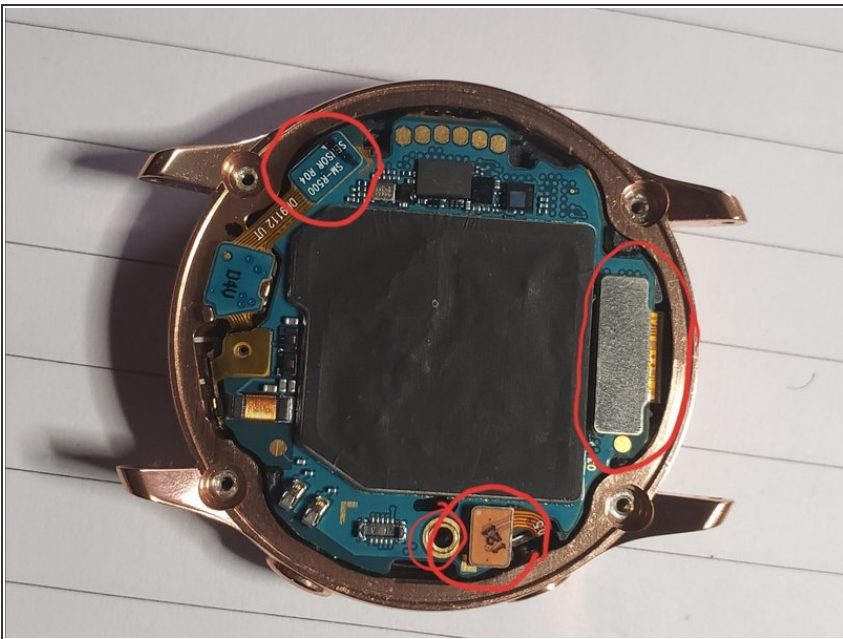
- Gently Lift the back to reveal a connector, use a tweezer to remove it then you will have access to the back

## Step 7



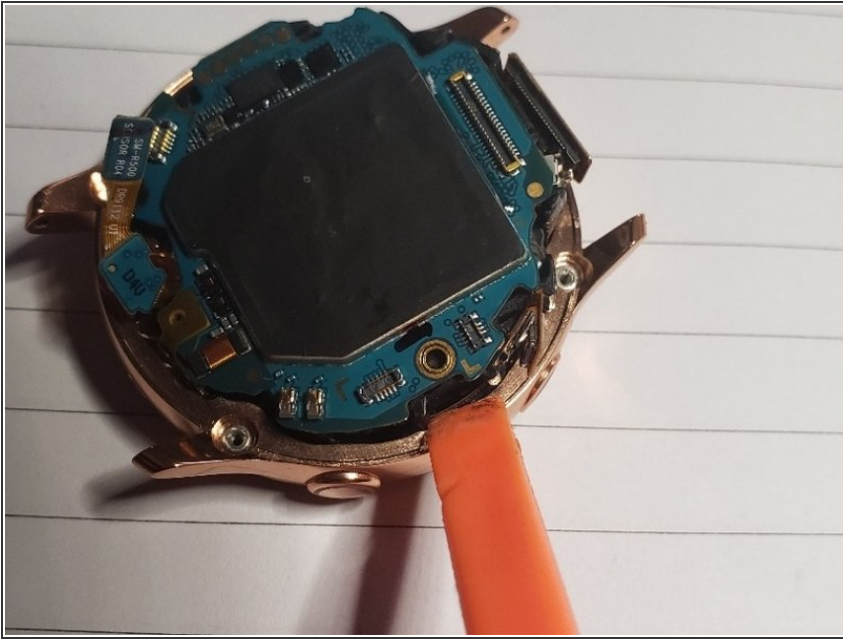
- Separate back fully from rest of the body

## Step 8



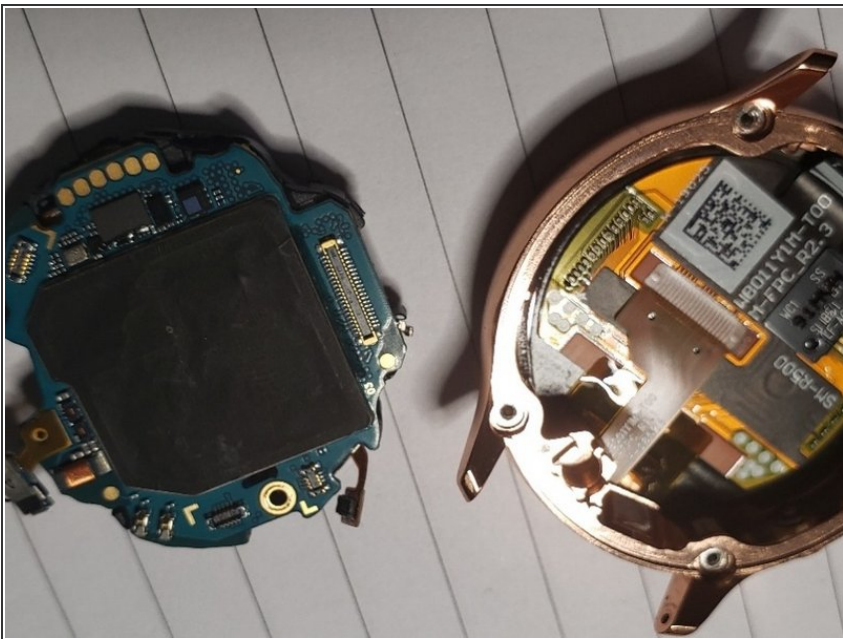
- use tweezer to remove all 3 connectors and remove the screw

## Step 9



- Use Spudger to lift panel housing from body

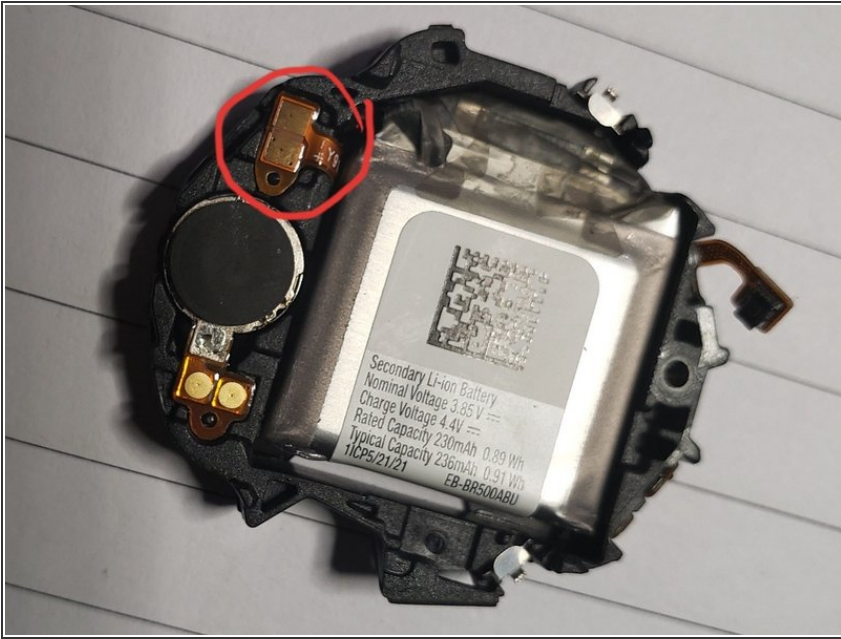
## Step 10



- Remove housing from watch body



## Step 11



- Lift off motherboard and use tweezers to lift up battery connector from the plastic housing

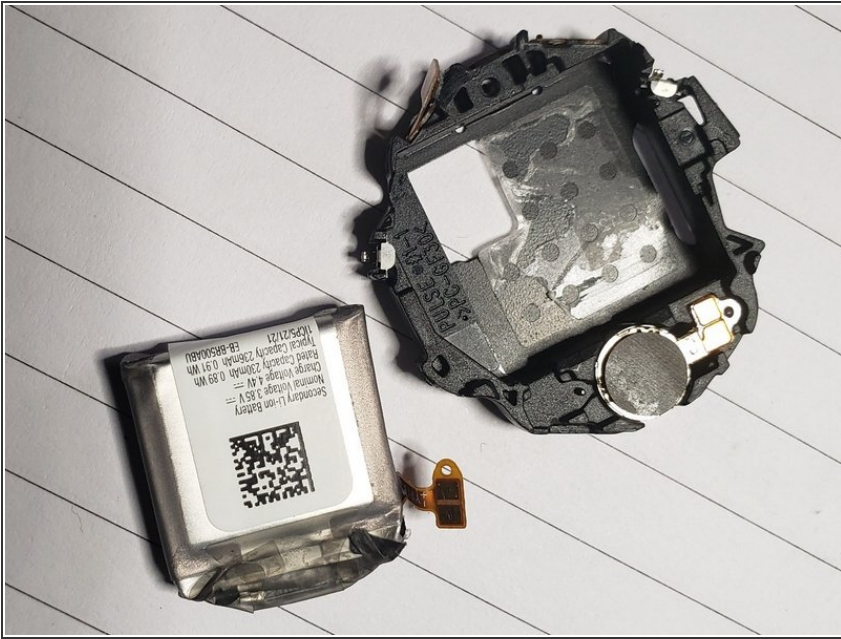
## Step 12



- use spudger to lift battery out of plastic housing



## Step 13



- Separate battery from the plastic body, then install replacement battery

To reassemble your device, follow these instructions in reverse order.