



# Samsung Wireless Charging Pad Teardown

A simple guide on safe disassembly of your Samsung Wireless Charging Pad.

Written By: Brant Arab



# INTRODUCTION

A simple guide on safe disassembly of your Samsung Wireless Charging Pad.



## TOOLS:

- [Jimmy](#) (1)
- [Phillips Screwdriver](#) (1)
- [iFixit Opening Picks set of 6](#) (1)



## PARTS:

- [Samsung Wireless Charging Pad](#) (1)

## Step 1 — Grab your wireless charger



- Do not remove the rubber ring on top, the adhesive may weaken (alike mine, which barely sticks on) when you attempt to replace it.

## Step 2 — Flip the Charging Pad over



- Flip your Wireless Charging Pad over, noting the position of the Qi logo (Bottom right of label)

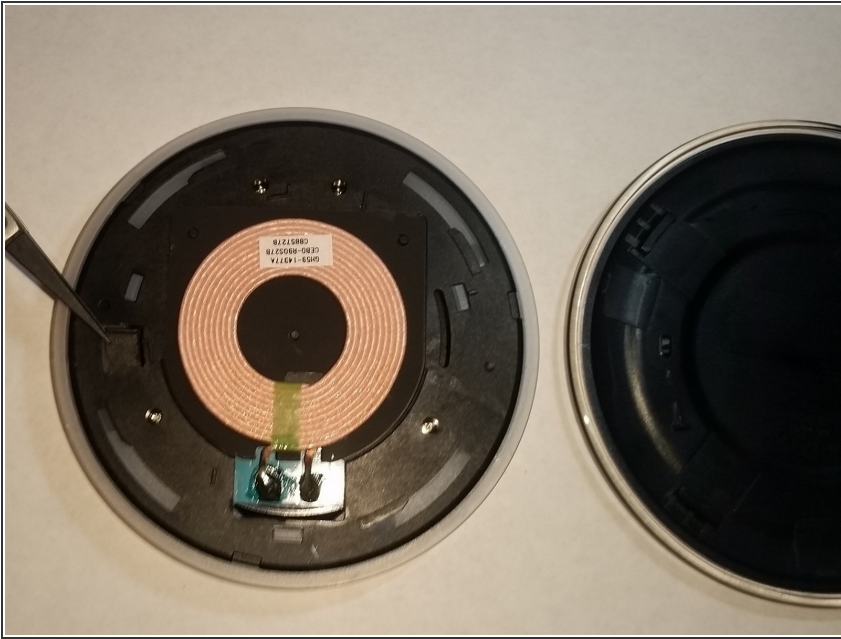
## Step 3 — Using the Jimmy tool



- Use your Jimmy tool to pry in between the two clear plastic layers. Try to keep the Jimmy's tip pointed upwards as you push it into the Charging pad, and the rounded side down (Relative to the Qi logo).
- Now slide the jimmy up gently until it stops.

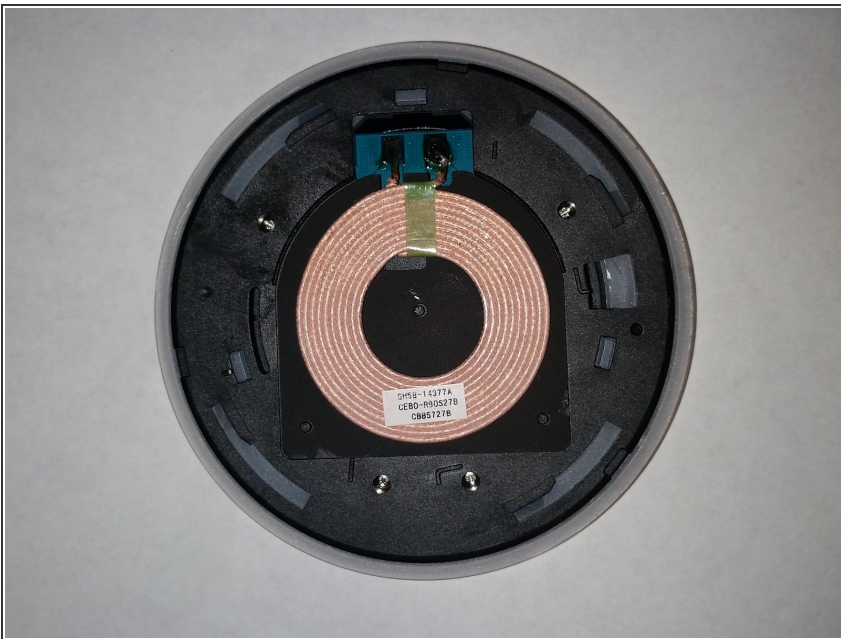


## Step 4 — Separating the cap and Midframe



- Without removing the Jimmy tool, rotate the top (still upside down) clockwise, and the bottom counter clockwise. The two pieces will separate from each other.
- ⓘ Take note of the location of this tab, as seen held by the Reversed Tweezers. Mine broke off because I was too rough bending it back up, but you might need to lightly bend it up to retain the chargers ability to stay closed during transport.

## Step 5 — Using the Screwdriver



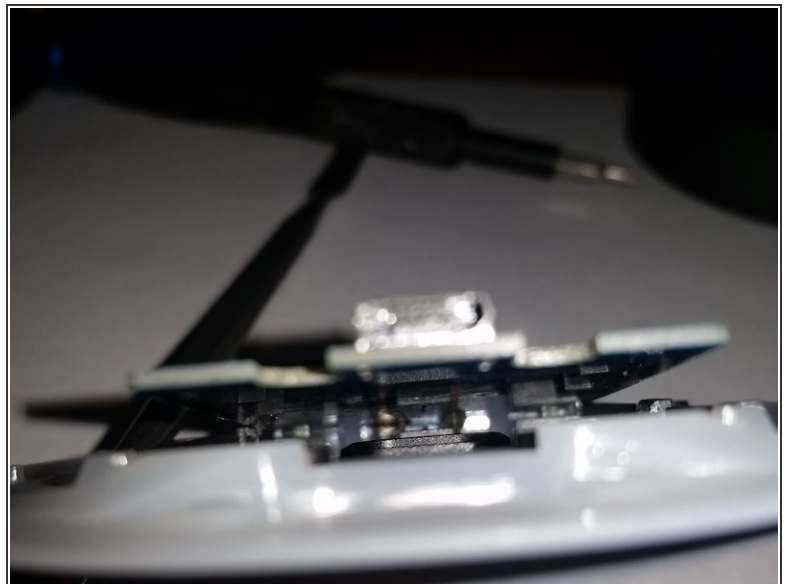
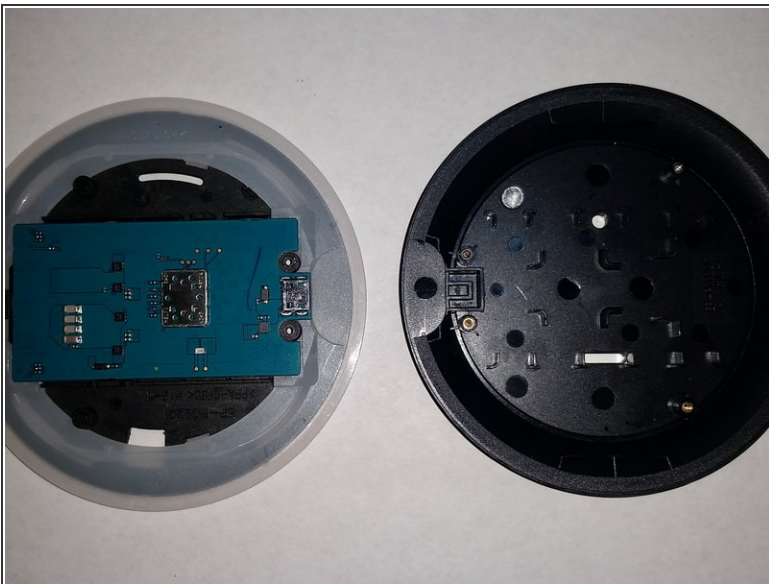
- Remove the four marked screws from their holes with your small screwdriver...

## Step 6 — Don't lose your screws!



- ...Making sure that you place them in a screw tray or safe place of sorts until you are ready to reassemble the Charging Pad.

## Step 7 — Separation of the Midframe and Base



- Gently separate the two pieces. Here you will find the powerboard.

**⚠ Warning:** DO NOT try to remove the powerboard unless you intend on resoldering the charging coils. The back of the power board is completely blank, so the only replaceable components are the chips on the face you see here.

## Step 8



- Reverse these steps to reassemble the Charging Pad, and plug the pad in upon completion to test the functionality. Congrats, you've successfully disassembled the Samsung Wireless Charging Pad