



Samsung galaxy s5 neo Display Replacement

Follow the steps of the guide to replace the display or the glass broken. After these necessary steps you can proceed to teardown the device for any repairs you want to do

Written By: Smilzo



INTRODUCTION

Follow the steps of the guide to replace the display or the glass broken.

After these necessary steps you can proceed to disassemble the device for other repairs

Step 1 — Display



- Remove the back cover.

Step 2



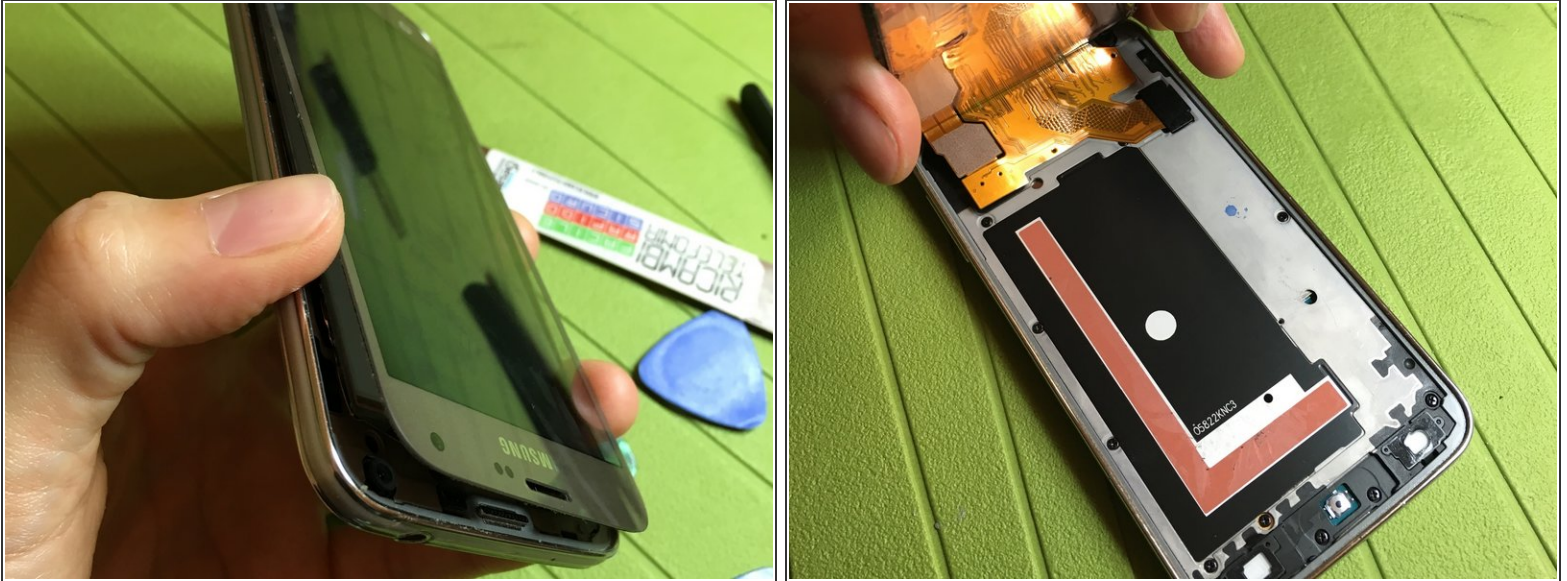
- Remove the battery.
- Remove the SIM card and SD card.

Step 3



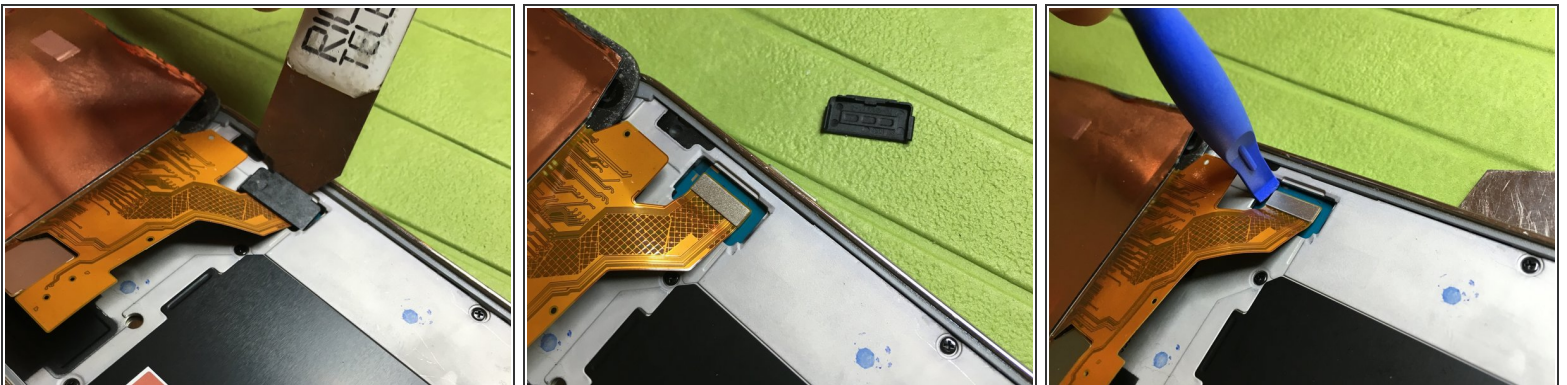
- Heat the display edges adequately at 80 degrees Celsius (176°F), then proceed to detach the display by inserting the flat opening tools between the display glass and the frame.
- Be careful not to rip the flat cables that lie underneath the lower part of the phone, near the keys
- Be careful not to rip the display flat connectors that lie underneath the upper part of the phone

Step 4



- !!!!CAUTION!!!! The display is also pasted in the middle with strong double-sided, be very careful if the display is not broken and you have to replace it with a new one.
- Insert translation here
- pink stripes are part of very strong adhesive that is likely to break the display

Step 5



- remove black cap interlocking covering the display connector
- unhook the display connector

Step 6



- Separate the display and swap it out for a new one.

To assemble the device , follow these instructions in reverse order