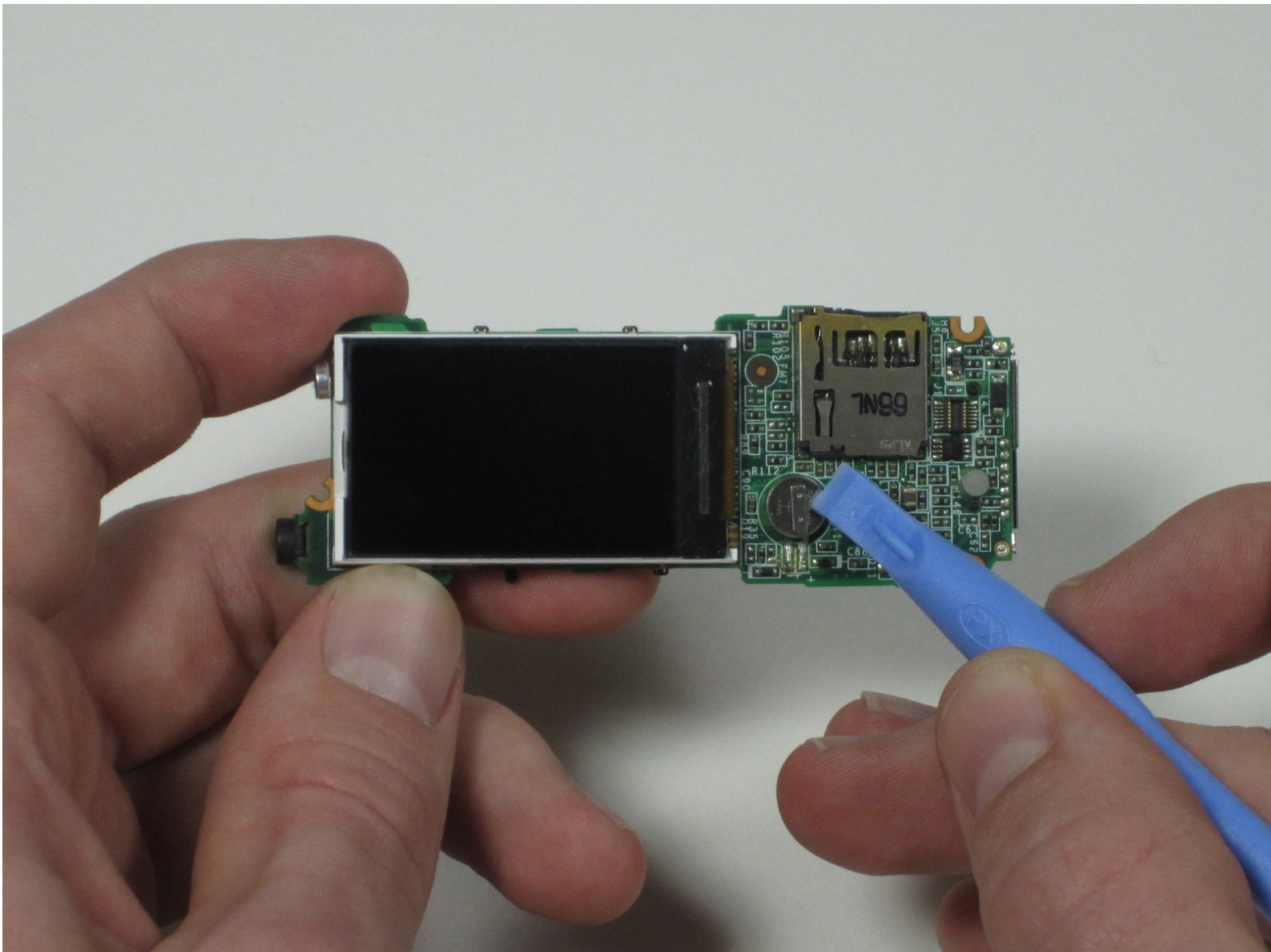




SanDisk Sansa C250 Internal Battery Replacement

This guide will show you how to replace the internal battery in the SanDisk Sansa C250 Mobile Media Player

Written By: Ryan Burke





TOOLS:

- [Phillips #0 Screwdriver](#) (1)
 - [Spudger](#) (1)
-

Step 1 — Battery Cover



- Slide the back cover forward toward the top of the device with your thumb.

Step 2



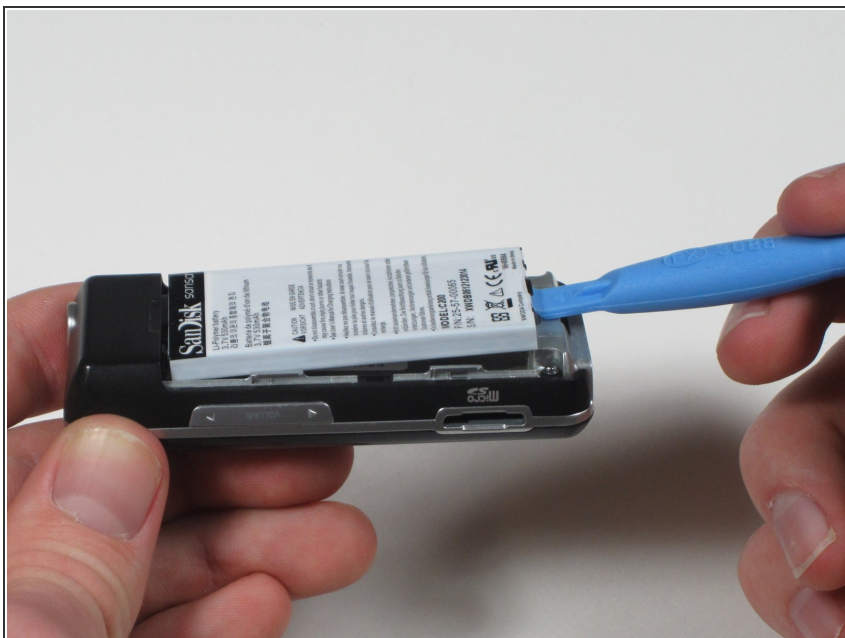
- The back cover is now separated from the device.

Step 3 — Battery



- Apply a fingernail or a plastic opening tool to the base of the battery.

Step 4



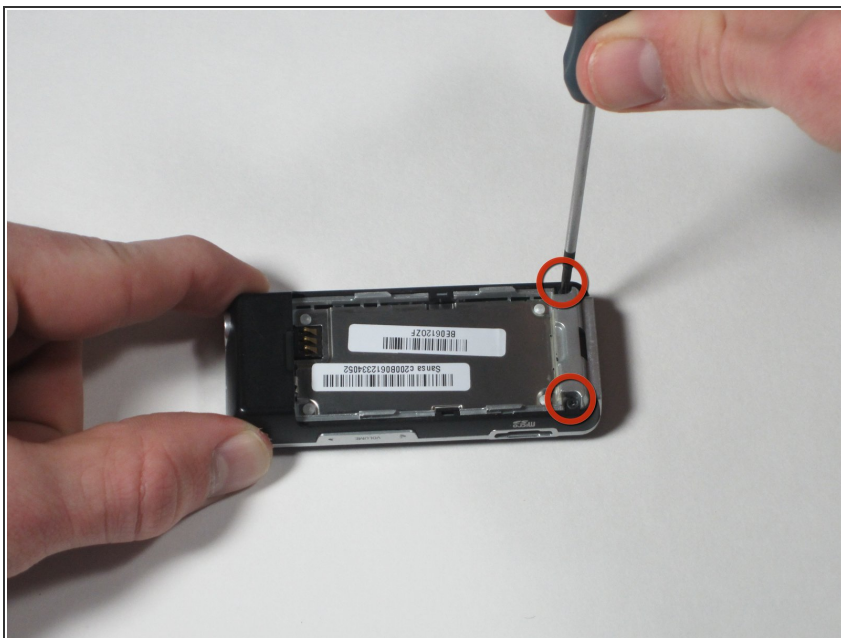
- Lift up gently. The battery should come up and out.

Step 5



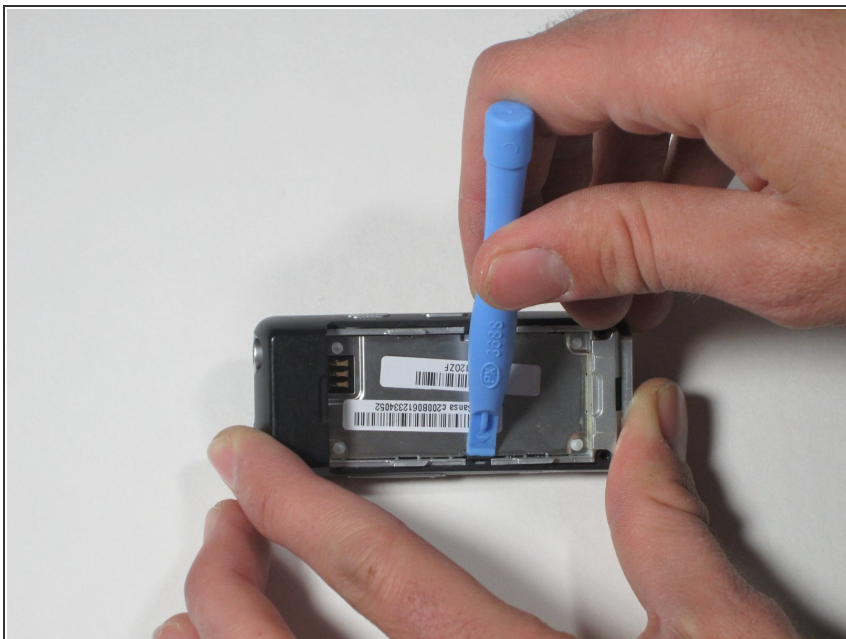
- The battery is now removed from the device.

Step 6 — Rear Case Cover



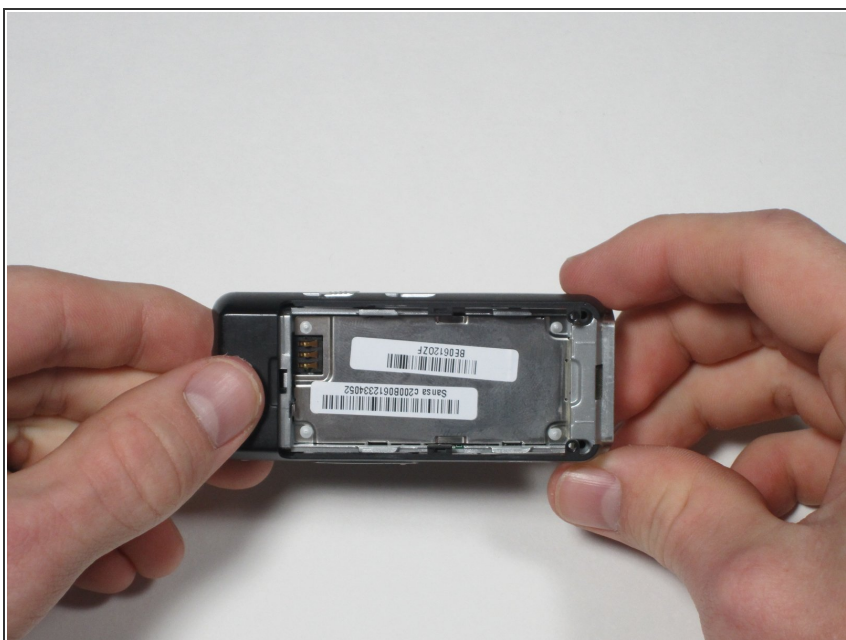
- Remove the two black .265" screws at the base of the device.

Step 7



- Using a plastic opening tool, pry up the two arms of the case cover near the middle of the device to free them from the sides.

Step 8



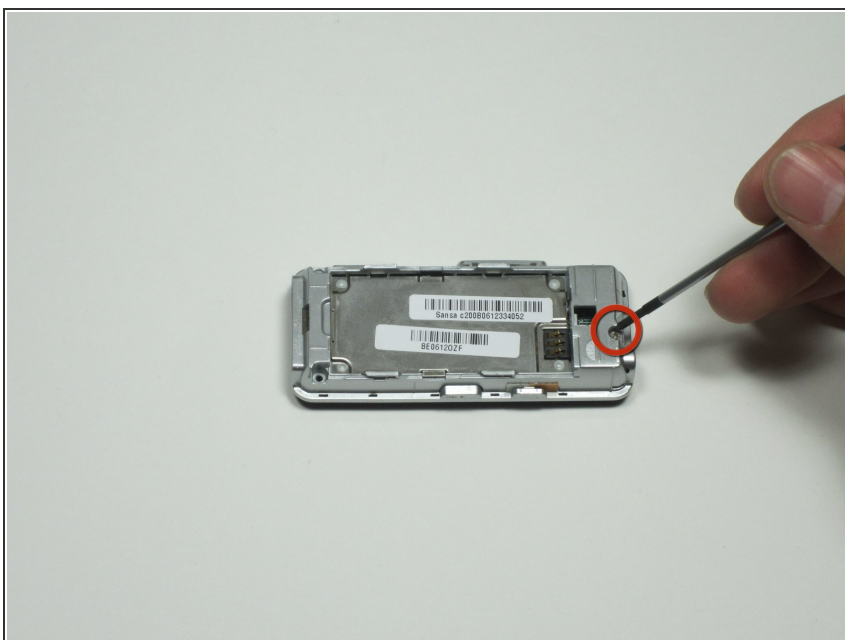
- Slide the rear case cover toward the top of the device with your thumb to release it.

Step 9



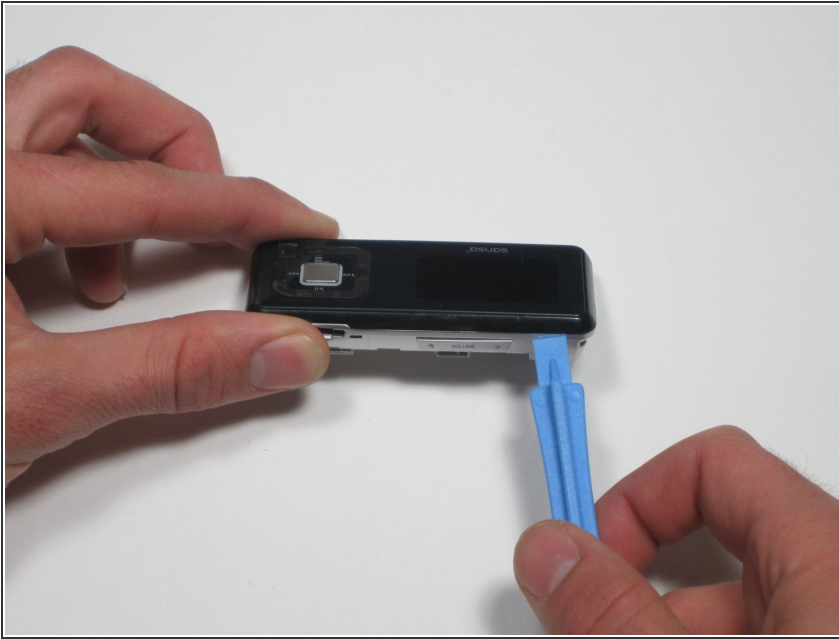
- The rear case cover can now be separated from the device.

Step 10 — Front Case Cover



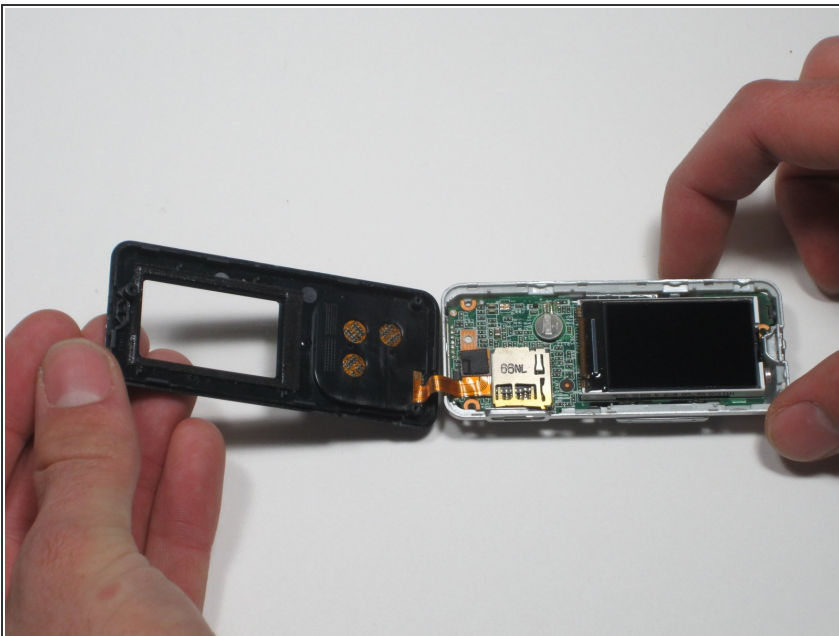
- Remove the single 0.327" silver screw on the back of the device that was exposed when you removed the rear case cover.

Step 11



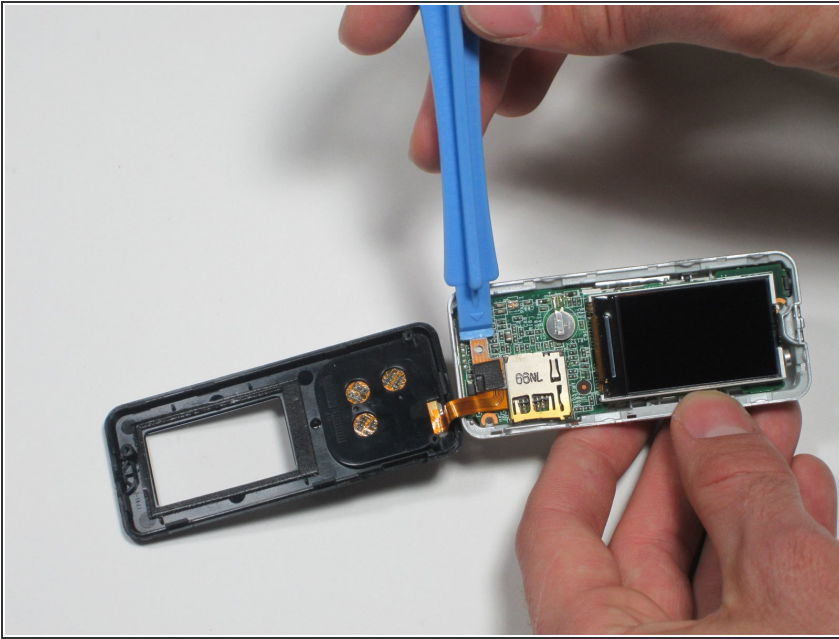
- Flip the device over and work a plastic opening tool around the base of the front case cover until it loosens.
- CAUTION: Do not fully remove the case cover until the next step has been completed or you may damage the ribbon cable. To be safe, only lift the cover high enough to fit a spudger in the gap.

Step 12



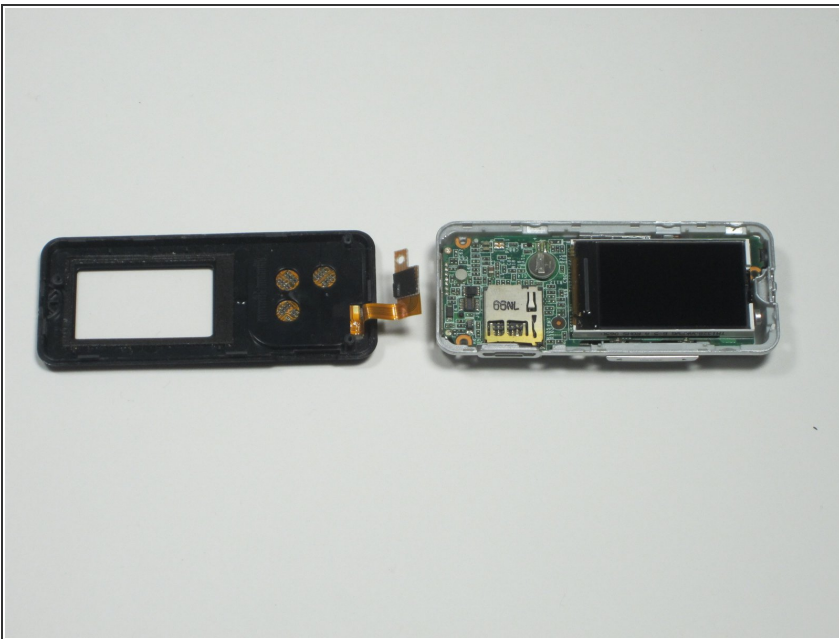
- Open the case cover starting on the side most distance from the buttons.

Step 13



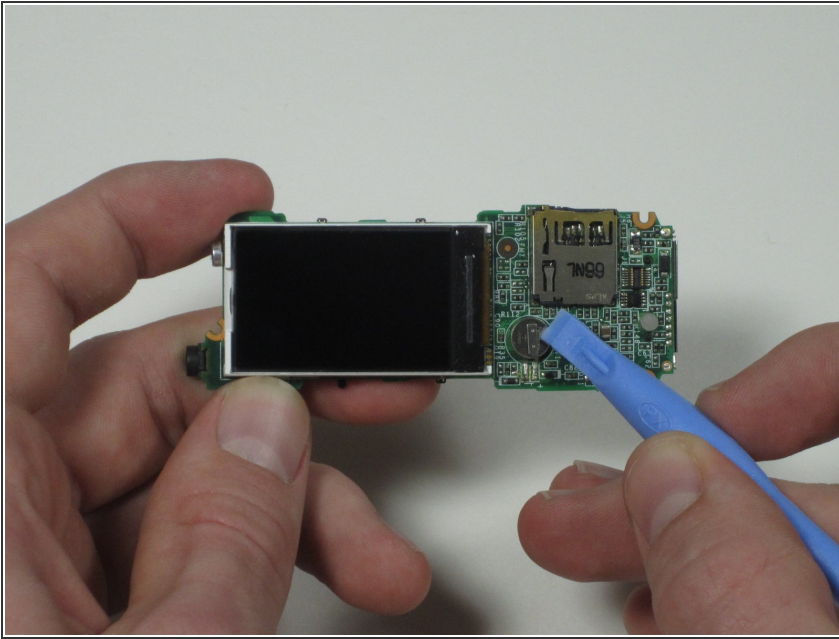
- Using a plastic opening tool, gently pry up on the top of where the ribbon cable attaches to the motherboard to release the cable.

Step 14



- You can now safely remove the front case cover from the device.

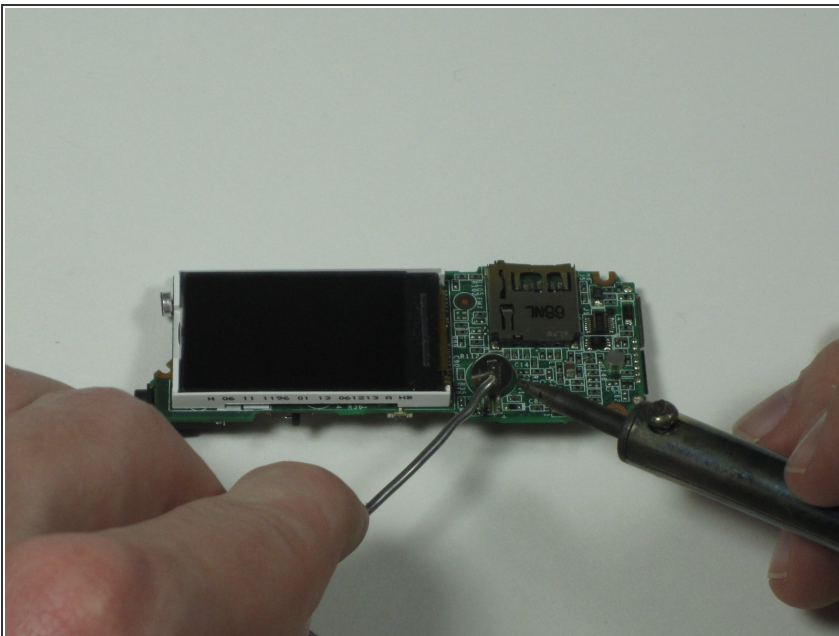
Step 15 — Internal Battery



CAUTION: If using a fingernail, be careful not to hurt yourself on the connector.

- Using a spudger or flat tool, lift the battery up and away from the board, taking note of its orientation.

Step 16



- Desolder the connectors on both sides of the battery to remove it.
- Resolder on a new Panasonic 6Y3 micro cell battery, taking care to orient it correctly as noted in the previous step.
- Bend the battery back so that it's flat against the board.

To reassemble your device, follow these instructions in reverse order.