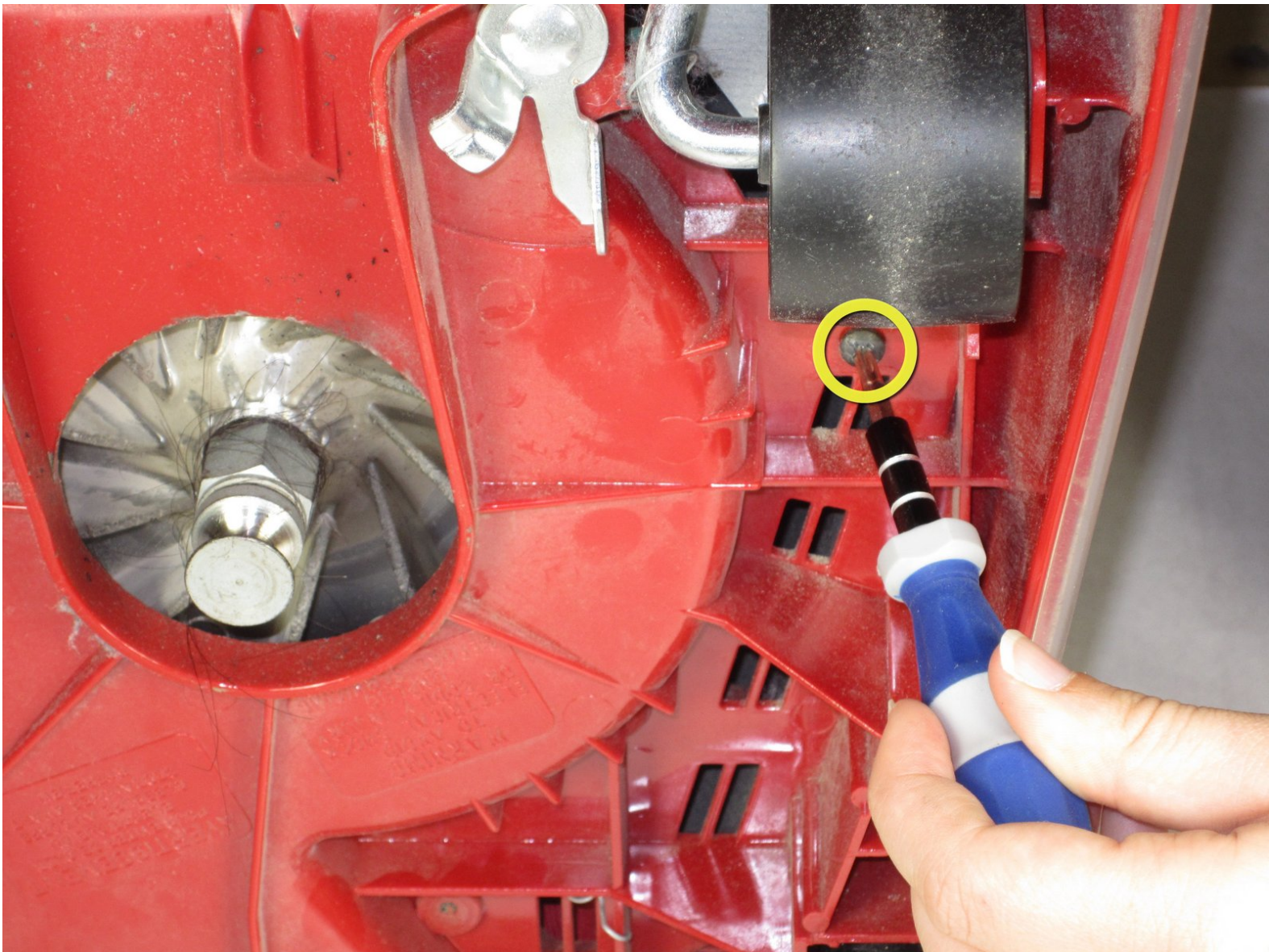




Sanitaire SC684 front wheel replacement

This guide will give step by step instructions on how to remove the front wheels of the Sanitaire SC684.

Written By: Caycie Pascual

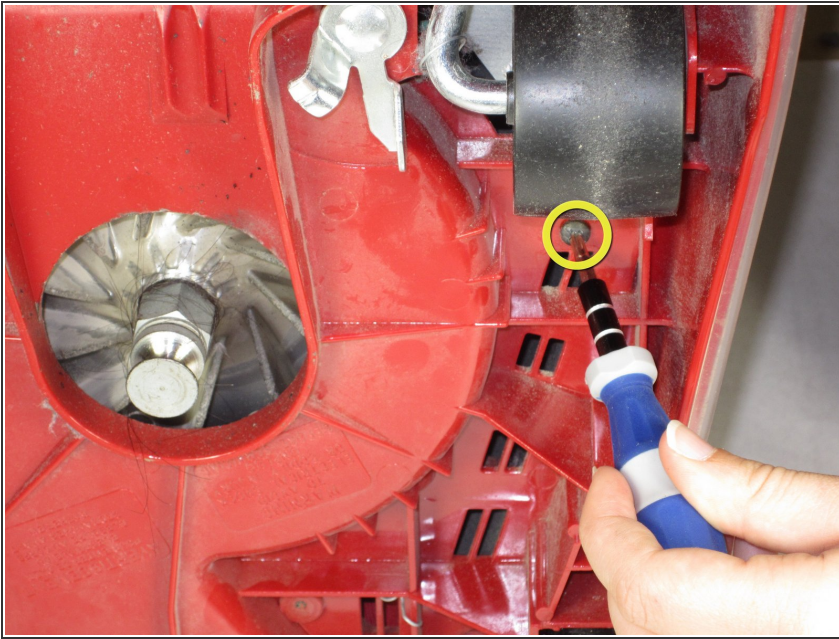




TOOLS:

- [Phillips #1 Screwdriver](#) (1)
 - [T20 Torx Screwdriver](#) (1)
-

Step 1 — Front Wheels



⚠ Be sure to unplug the vacuum before disassembling it to prevent electric shock.

- Lay vacuum on side.
- Using a Phillips screwdriver, unscrew the screw behind the front wheels, on the edge of the underside of the vacuum cleaner.

Step 2



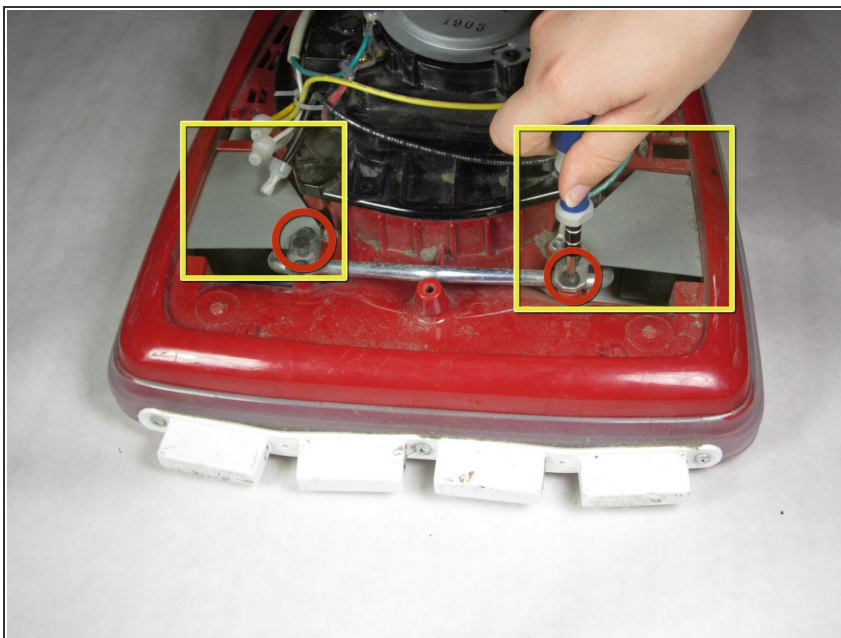
- Stand the vacuum upright and identify the dial on the front of the vacuum.
- Unscrew the screw using a Torx 20 screwdriver
- Pull the dial out.

Step 3



- Lift the cover off of the vacuum.

Step 4



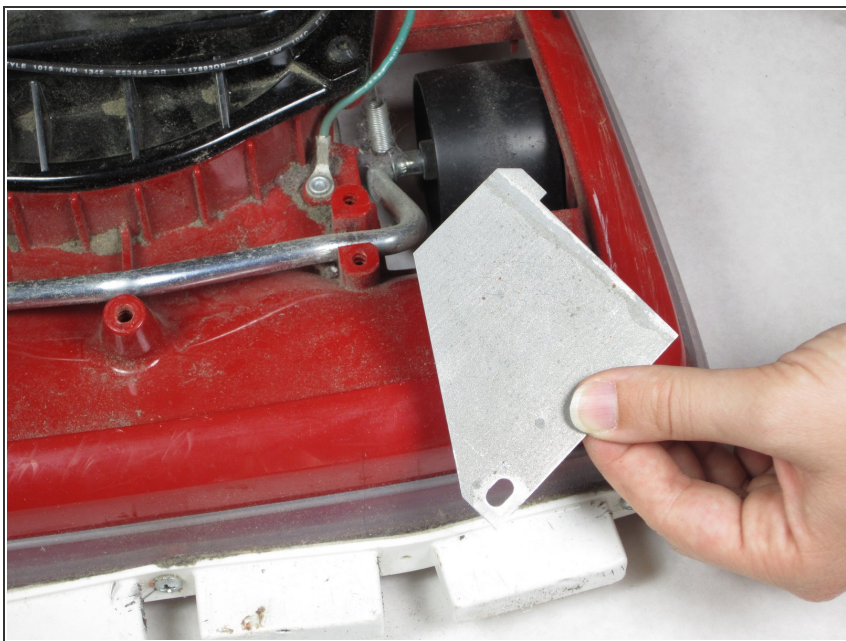
- Identify the two gray metal plates at the front of the vacuum.
- Using the T20 Torx screwdriver, remove the four screws on the smaller gray plate holding the larger gray metal plates.

Step 5



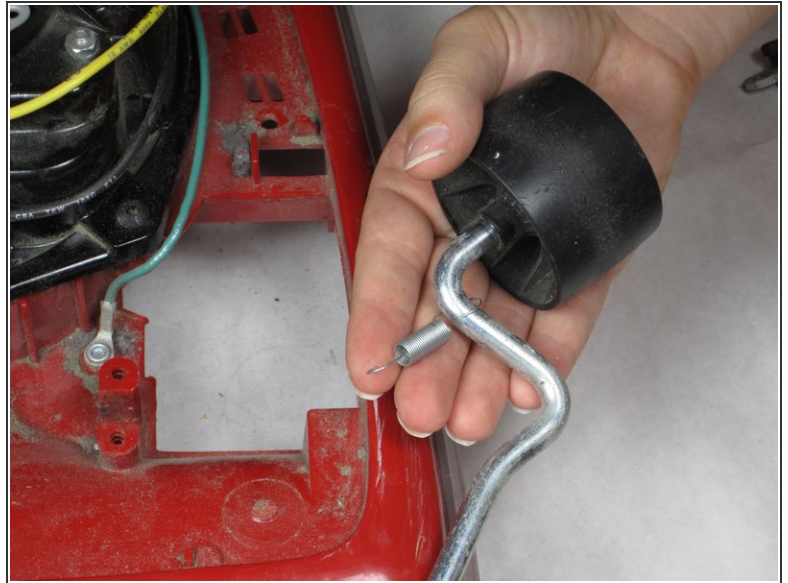
- Remove the small metal plate with the black bolt in the center.
- Repeat on opposite side near the other wheel

Step 6



- Remove the larger gray metal plate.
- Repeat on opposite side near other wheel.

Step 7



- Remove the front wheels by lifting the silver bar that attaches the two wheels.
- Detach the spring attaching the wheels to the vacuum.

Step 8



- Remove a wheel from the wheel's axel by pulling off the wheel.
- Slide spring off.

To reassemble your device, follow these instructions in reverse order.