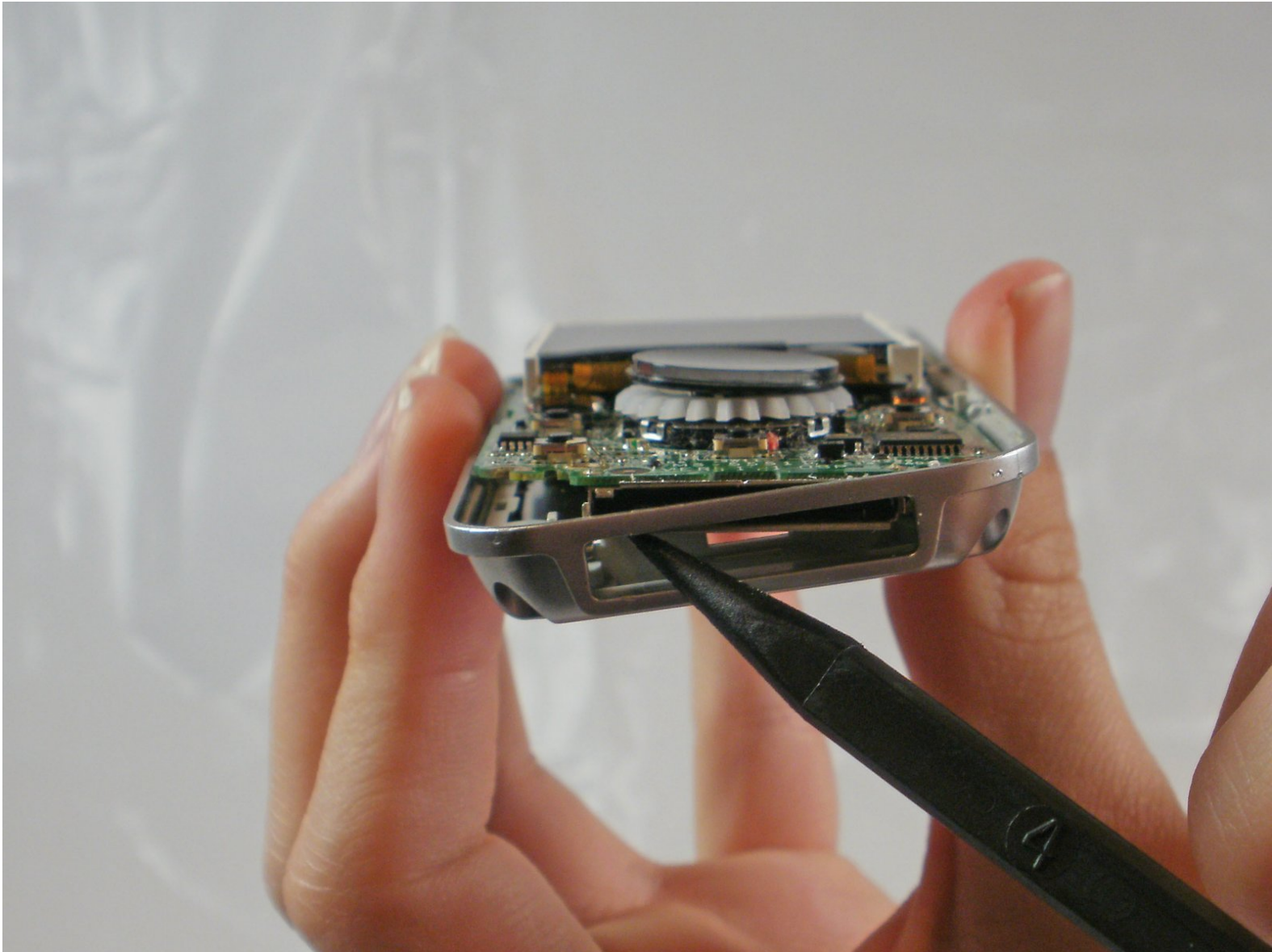




Sansa e260R Memory Board Replacement

Written By: JenniferW





TOOLS:

- [Phillips #00 Screwdriver](#) (1)
- [iFixit Opening Tools](#) (1)
- [Spudger](#) (1)

Step 1 — Rear Case



- ❗ Before disassembling the device, make sure it is powered off.
- Remove the four 1.5mm screws on the back of the device.

Step 2



- Using a plastic opening tool, lift the metal backing from the front of the device.

Step 3



- Pull the rear panel off of the Sansa e260R.

Step 4 — Battery



- Grip the bottom of the battery with your thumb and forefinger and pull it away from the device.

Step 5 — Front Panel



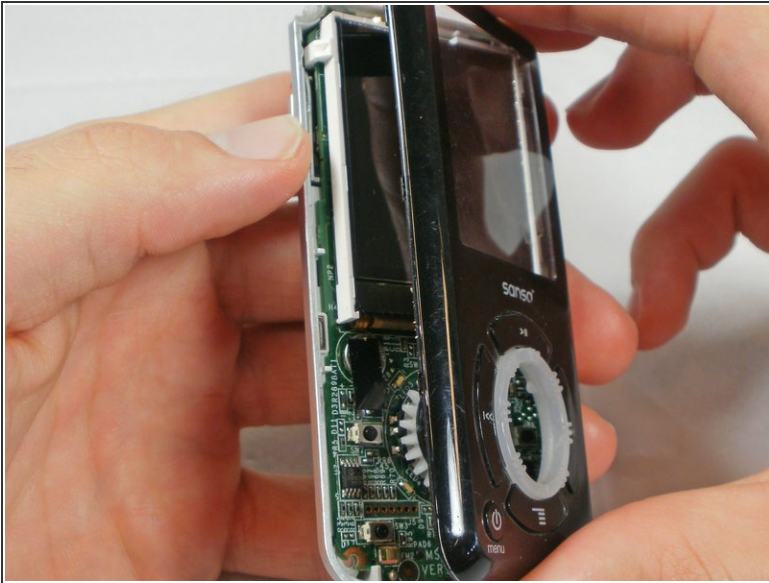
- Remove the four 1.5mm screws on the inner casing of the device.
- ⓘ These screws are very small and hard to extract from the casing. It may be helpful to use a magnetic screwdriver.

Step 6



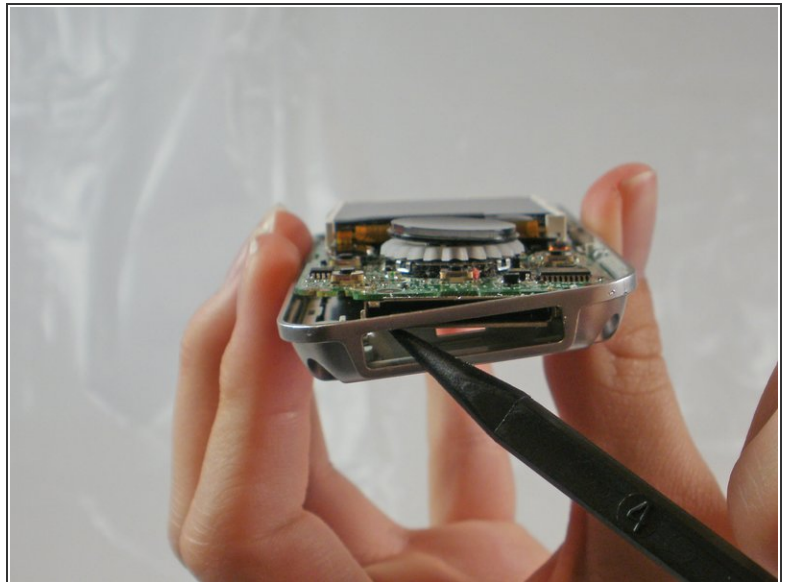
- Flip the device so that the front is facing you.
- Slide a plastic opening tool between the plastic front cover and the metal back cover of the device.

Step 7



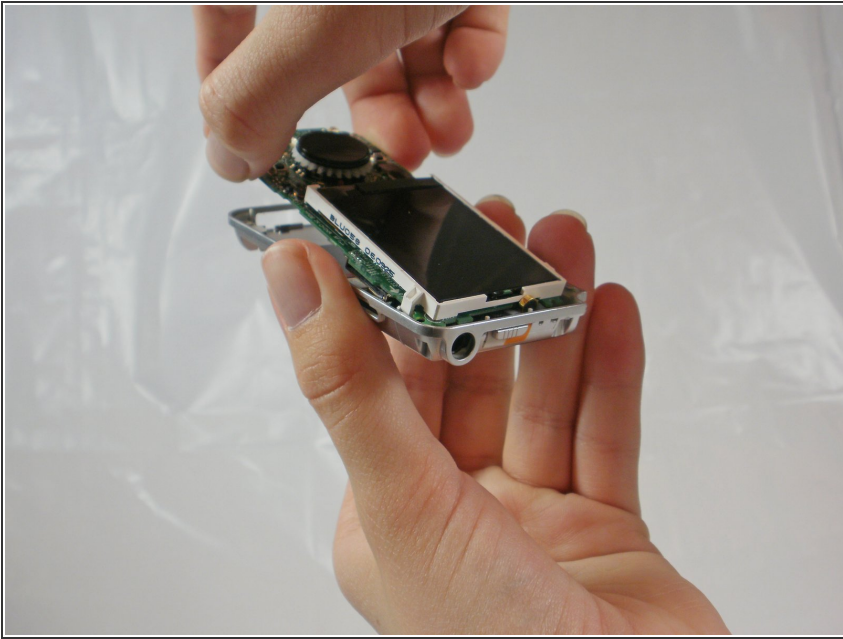
- Pull the front cover away from the rest of the device.

Step 8 — Memory Board



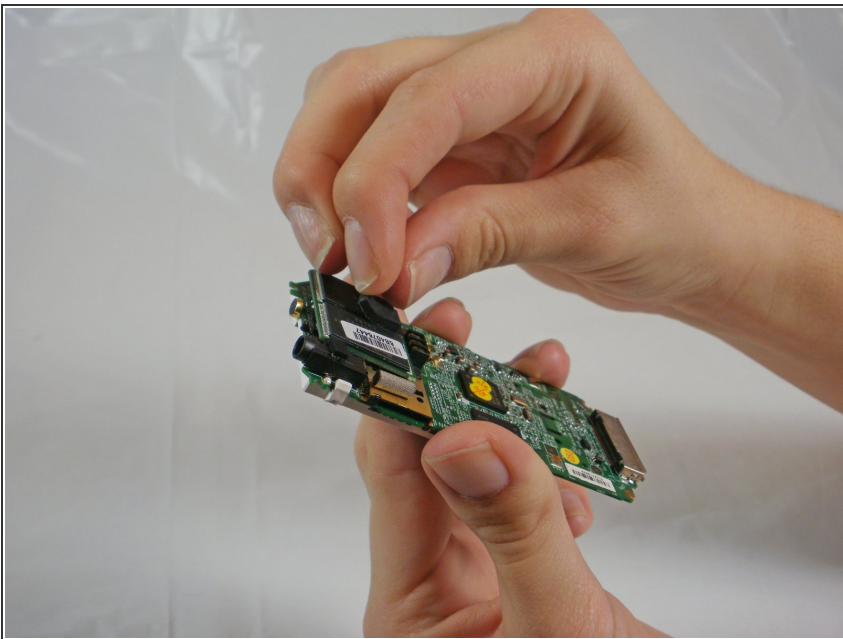
- Near the charging port, pull the case away from the motherboard to create clearance to remove the motherboard.
- Use the spudger to push the motherboard in and pop the metal edge of the charging port up and inside the plastic case.

Step 9



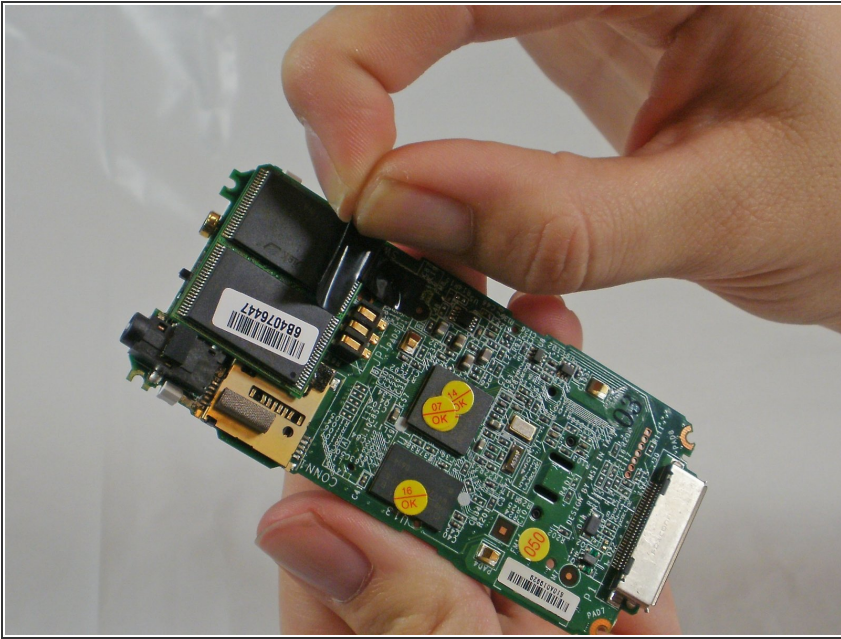
- Pull the bottom of the motherboard up and then out.

Step 10



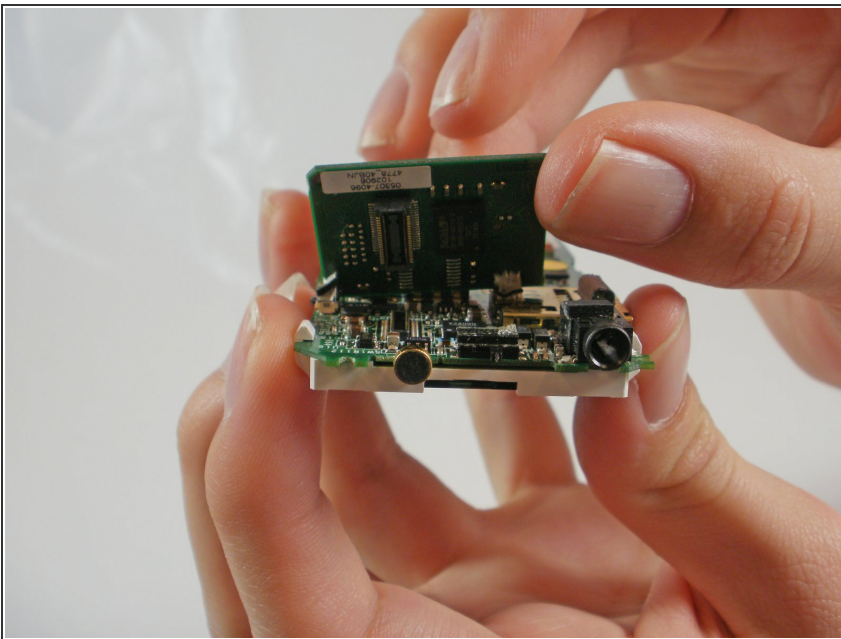
- ❗ On the back of the motherboard, there is a rectangle of rubber.
- Peel the rectangle off slowly.

Step 11



- ① Under the rubber rectangle, there is a strip of black tape.
- Peel the tape off about halfway so that it is no longer attached to the memory board.

Step 12



- Carefully peel the memory board away from the rest of the motherboard

To reassemble your device, follow these instructions in reverse order.