



# Sanyo SCP-8100 Camera Replacement

Guide on installing a new camera piece in the Sanyo SCP-8100

Written By: Paul Truong



## INTRODUCTION

This guide will show you how to properly install a camera for the Sanyo SCP-8100. If your device is having trouble taking pictures or it will not take pictures at all, you may need to install a new camera.

You will need to open the front panel and remove the LCD board in order to get to the camera piece.



### TOOLS:

- [iFixit Opening Tools](#) (1)
  - [Y1 Tri-point Screwdriver](#) (1)
  - [Tweezers](#) (1)
  - [Push Pin](#) (1)
-

## Step 1 — Earpiece



- Open the phone and remove the four stickers that hide the four 0.5 mm screws.
  - On the bottom two, use a push pin to pull out the stickers.
- ⚠ Do this slowly and gently. You may damage the phone screen or tear the sticker.

## Step 2



- For the top two, use the same push pin and gently pull out the stickers.
- ⚠ These are a bit harder to pull out, so you might need to use more force. However, be gentle or else you may tear the rubber off of the sticker instead of the whole plug.



### Step 3



- Use the Tri-Wing Y1 screwdriver to unscrew the now uncovered four 0.5 mm screws.

### Step 4

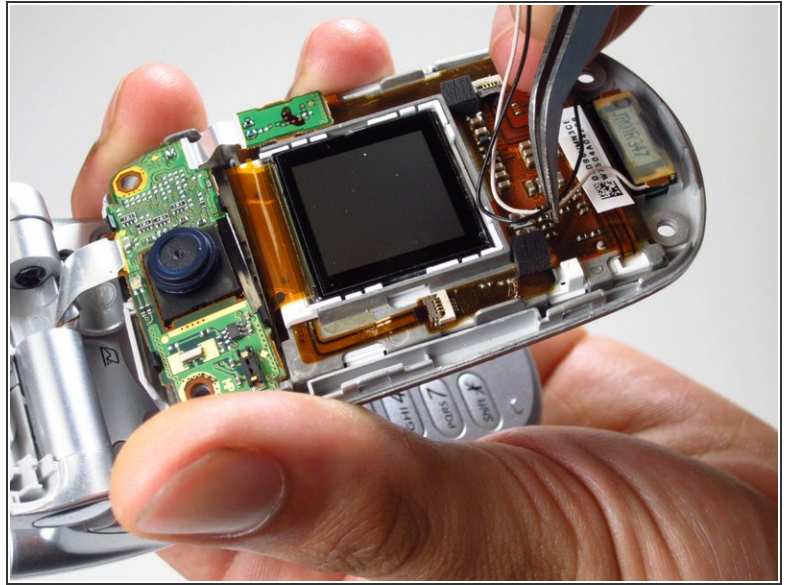


- Use the opening tool to pry open the front panel.
  - ⓘ You might need to use some force. If it won't budge, try the other side of the panel. You may need to pry open more than one spot to get it completely open.
  - ⓘ Don't completely remove the panel, it is still connected to the phone.

This document was generated on 2019-10-04 01:45:40 AM (MST).

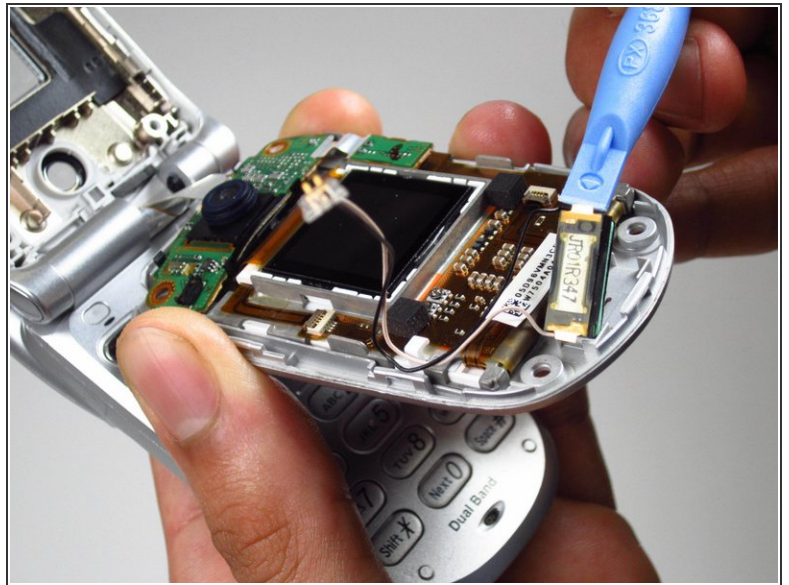
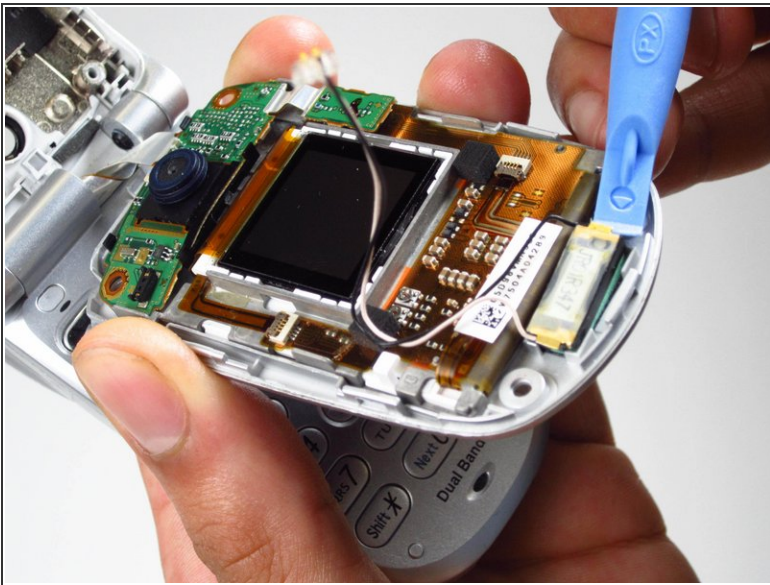


## Step 5



- Use tweezers to detach the plastic connector.
- With the tweezers, pull the wires from the plastic clamp.

## Step 6



- Use the opening tool to pull the earpiece off of the top panel.
- ⓘ You may need to use some force to take this out.



## Step 7 — Camera



- Use plastic opening tool to lift the chip on the right side.

## Step 8



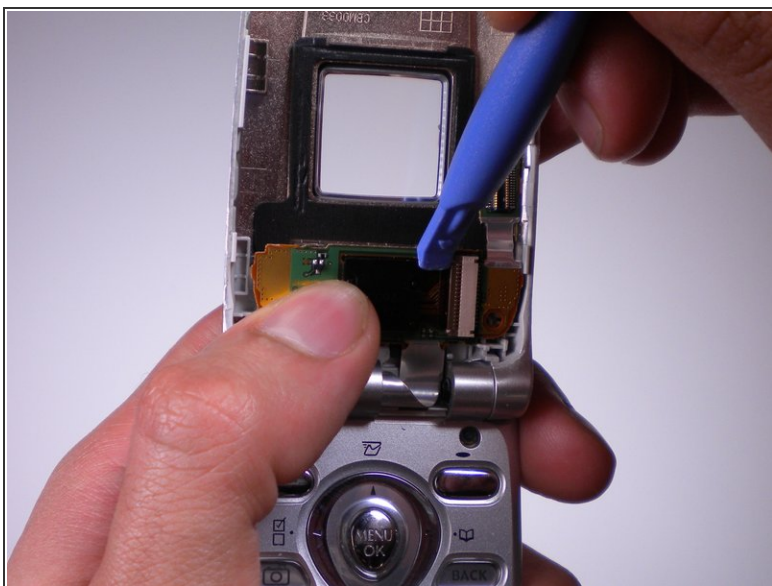
- Use plastic opening tool to pry the board off of the front panel.
- ① You may need to use force.
- Completely remove the screen from the phone.

## Step 9



- Use the opening tool to take off the black plastic frame around the camera lens.

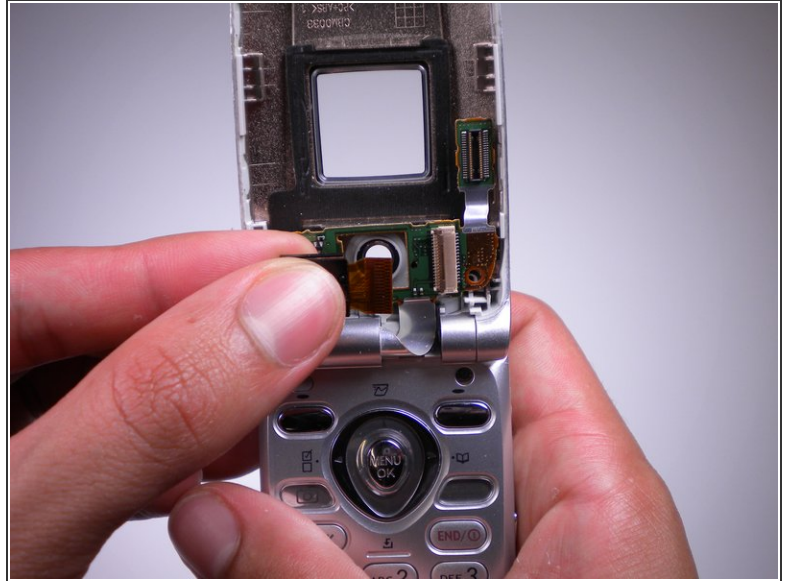
## Step 10



- Use the plastic opening tool to flip the ZIF connector to the right.



## Step 11



- Lift the camera from the opening.
- Detach and pull the camera from the ZIF connector.

To reassemble your device, follow these instructions in reverse order.