



Sanyo SCP-8100 Earpiece Replacement

How to replace the earpiece on the Sanyo SCP-8100.

Written By: Irenz Afable



INTRODUCTION

Follow these guides to properly remove and install a new earpiece on the Sanyo SCP-8100. If you cannot hear anything during calls or the sound quality is not clear, then you may need to replace the earpiece.

You will need to open the top panel by pulling out four stickers that hides the four screws.

- **Note:** You will need to use a push pin to pull out the stickers. Using a spudger or an opening tool will not be sufficient enough. They are too thick to use and will make it difficult to use.



TOOLS:

- [1.5 mm Flathead Screwdriver](#) (1)
 - [iFixit Opening Tools](#) (1)
 - [Tweezers](#) (1)
 - [Push Pin](#) (1)
-

Step 1 — Earpiece



- Open the phone and remove the four stickers that hide the four 0.5 mm screws.
 - On the bottom two, use a push pin to pull out the stickers.
- ⚠ Do this slowly and gently. You may damage the phone screen or tear the sticker.

Step 2



- For the top two, use the same push pin and gently pull out the stickers.
- ⚠ These are a bit harder to pull out, so you might need to use more force. However, be gentle or else you may tear the rubber off of the sticker instead of the whole plug.

Step 3



- Use the Tri-Wing Y1 screwdriver to unscrew the now uncovered four 0.5 mm screws.

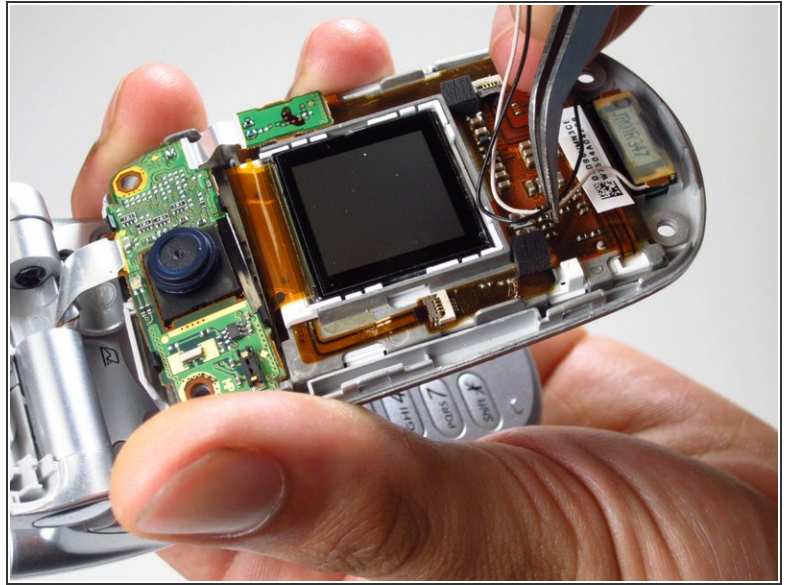
Step 4



- Use the opening tool to pry open the front panel.
 - ⓘ You might need to use some force. If it won't budge, try the other side of the panel. You may need to pry open more than one spot to get it completely open.
 - ⓘ Don't completely remove the panel, it is still connected to the phone.

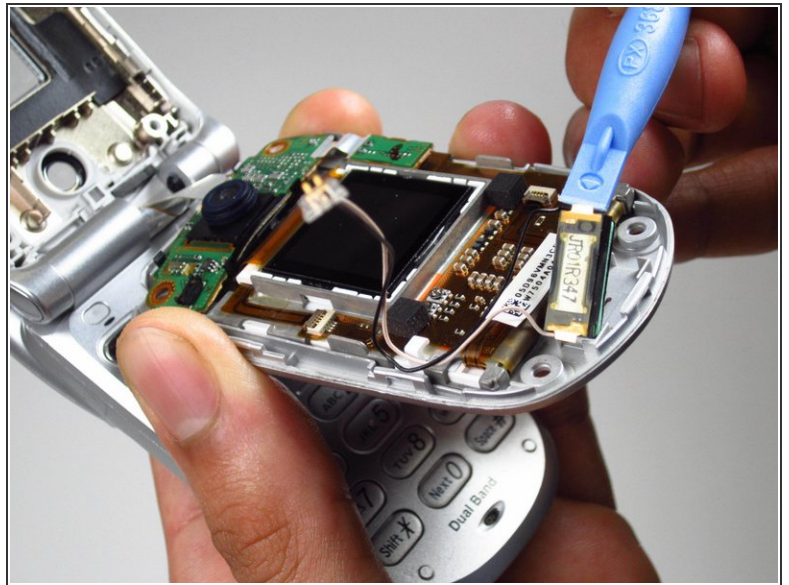
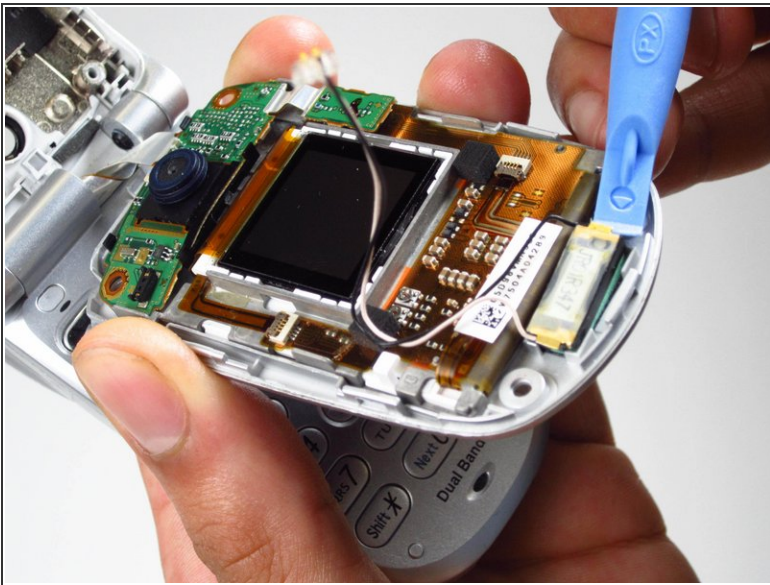
This document was generated on 2019-10-21 01:42:10 PM (MST).

Step 5



- Use tweezers to detach the plastic connector.
- With the tweezers, pull the wires from the plastic clamp.

Step 6



- Use the opening tool to pull the earpiece off of the top panel.
- ⓘ You may need to use some force to take this out.

To reassemble your device, follow these instructions in reverse order.