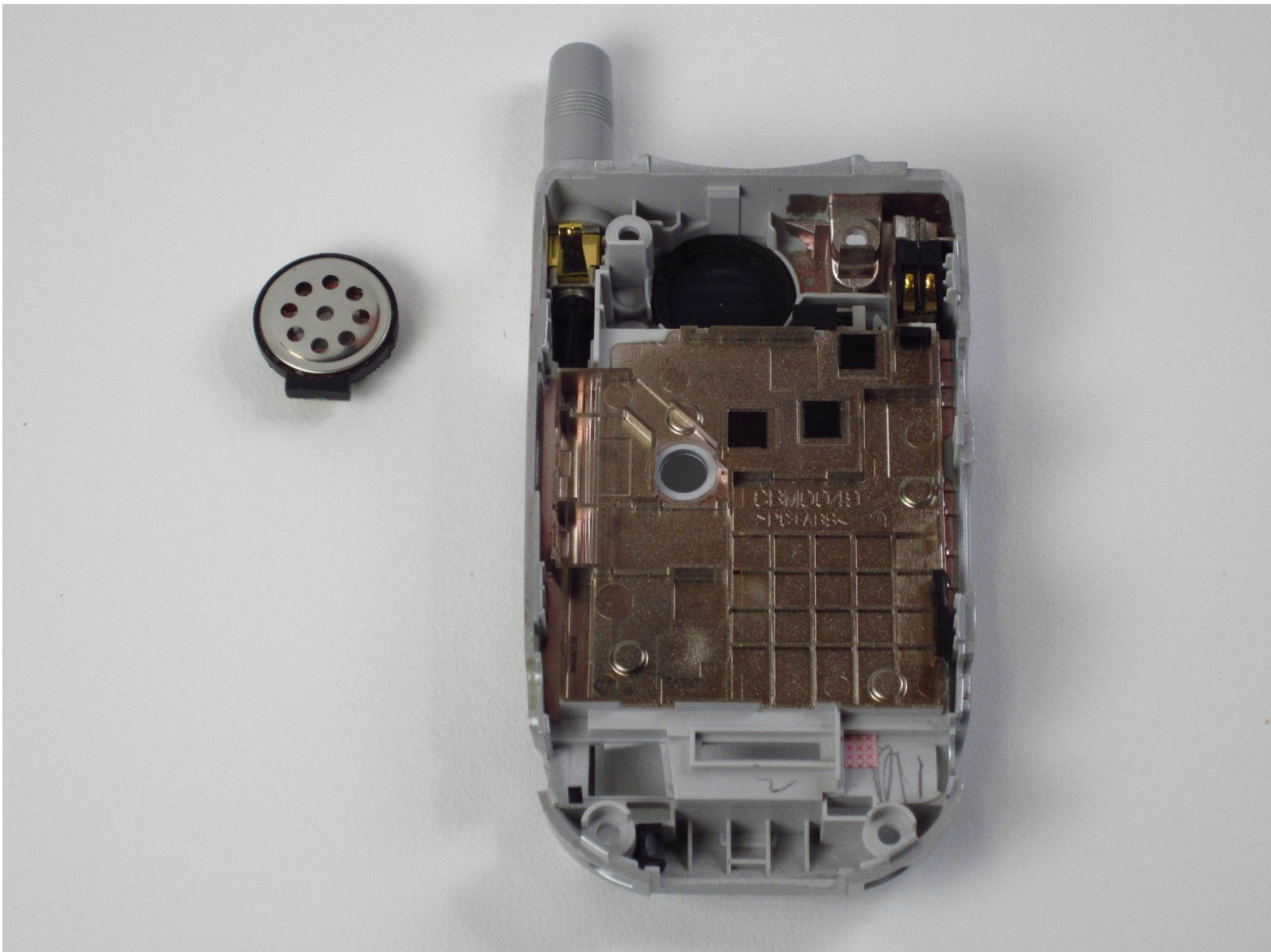




Sanyo SCP-8100 Speaker Replacement

How to install a new speaker for the Sanyo SCP-8100.

Written By: Paul Truong



INTRODUCTION

In order to install the speaker for the Sanyo SCP-8100, you will need to unscrew and pry the back panel off of the phone. The speaker is located on the back panel itself and easy to replace.

- **Note:** In order to pull out the plug on the back of the phone that is hiding one of the screw, you will need to use a push pin. A spudger or opening tool is too thick to take it out.



TOOLS:

- [Y1 Tri-point Screwdriver](#) (1)
 - [iFixit Opening Tools](#) (1)
 - [Tweezers](#) (1)
 - [Push Pin](#) (1)
-

Step 1 — Battery



- Push and hold the button on the back toward the direction of the arrow to unlock the battery.
- Lift and remove the battery from the back of the phone.

Step 2 — Back Panel



- Using a push pin, pull out the plug on the back, located under the antenna.



You may try to use a spudger or opening tool, however, you may damage the plug because those tools are too thick.

Step 3



- Unscrew the four 6mm long screws with a Tri-Wing Y1 screwdriver.

Step 4



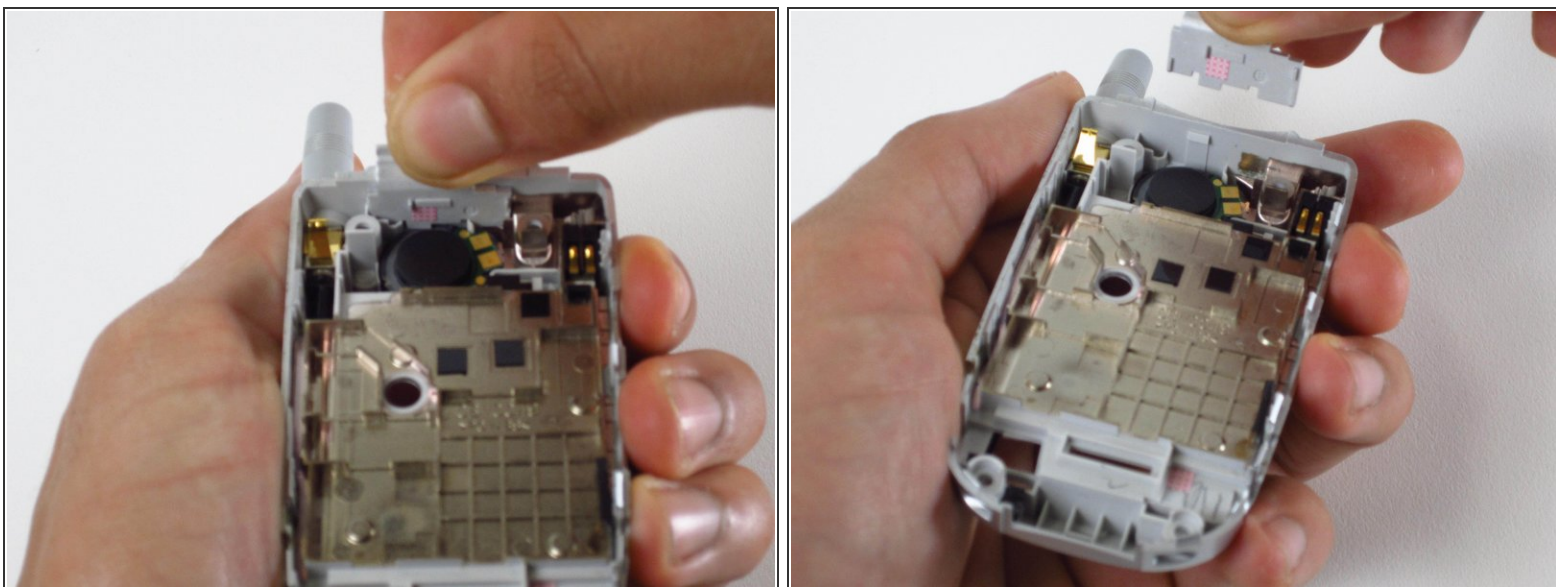
- Use a plastic opening tool to pry the back panel along the edges.
 - ⓘ You may need to apply some force when prying.

Step 5



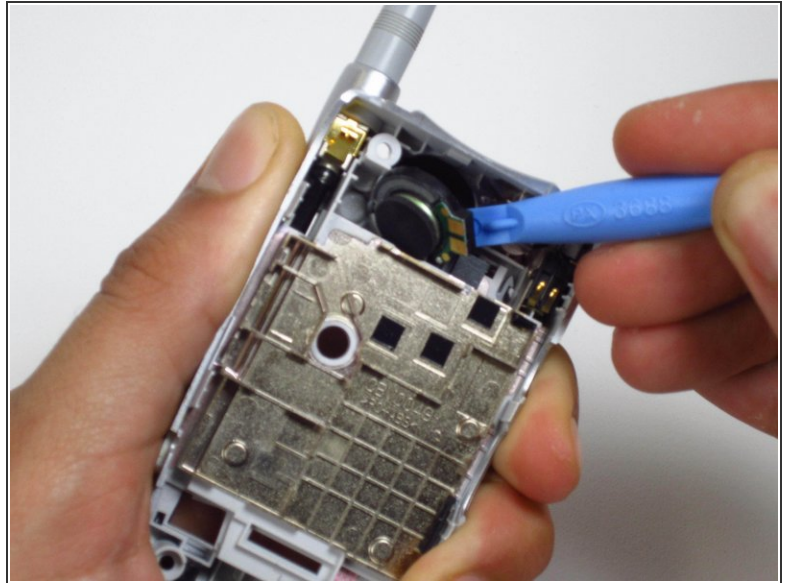
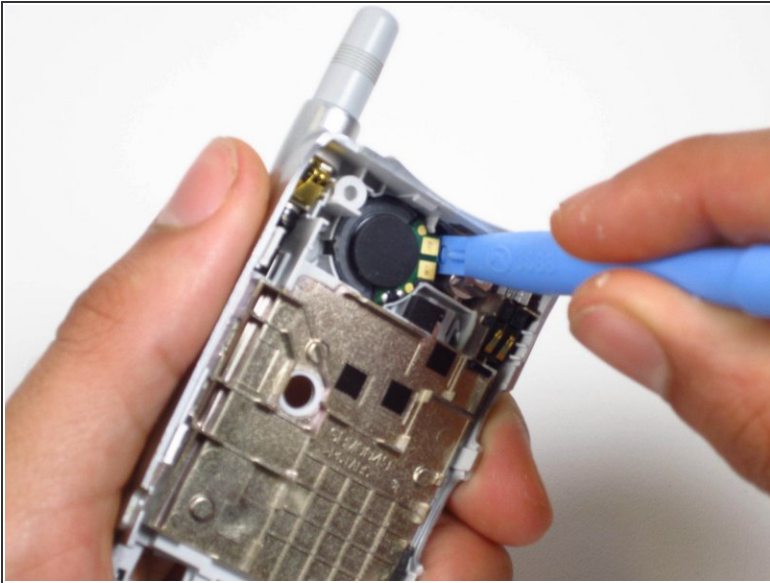
- While removing the back panel, take out the rubber cover on each side.

Step 6 — Speaker



- Pull the connector at the top of the back panel out.
 - ⓘ You may need to use some force when pulling.
 - ⓘ It may still be connected to the phone instead of the back panel.

Step 7



- Use the opening tool to lift the speaker out from the right side.

To reassemble your device, follow these instructions in reverse order.