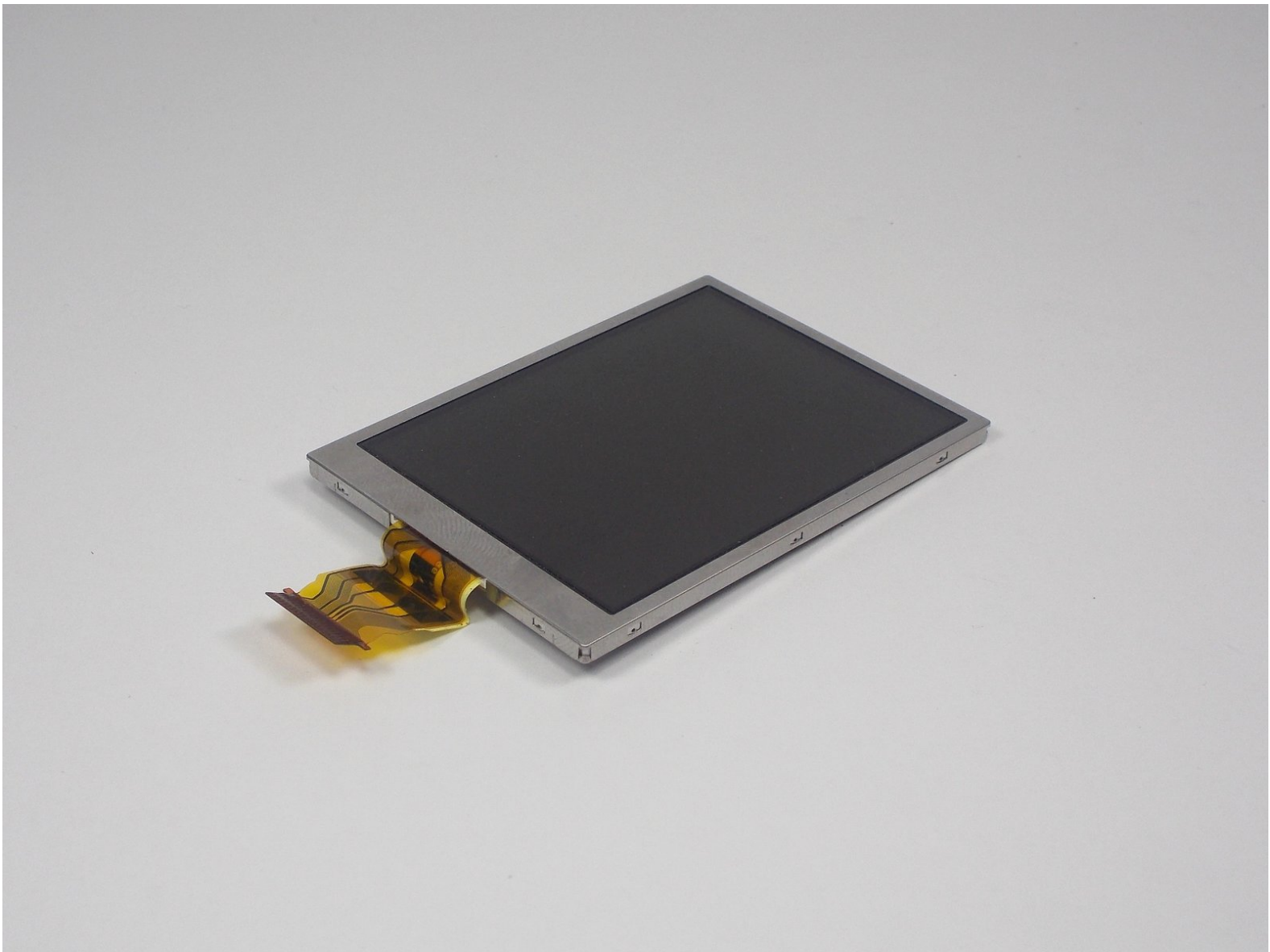




Sanyo VPC-T850 LCD Display Replacement

The aim of this guide is to open up the camera and replace the camera's LCD screen. The LCD screen is the screen from which you look at while taking pictures.

Written By: Devin Farnsworth



INTRODUCTION

This guide will come in very handy for other repairs on your camera because of the number of prerequisites required.



TOOLS:

- [Phillips #000 Screwdriver](#) (1)
 - [iFixit Opening Tools](#) (1)
-

Step 1 — Battery



- Make sure the camera is powered off by pressing and holding the small, square button embedded in the top rim of the camera.

Step 2



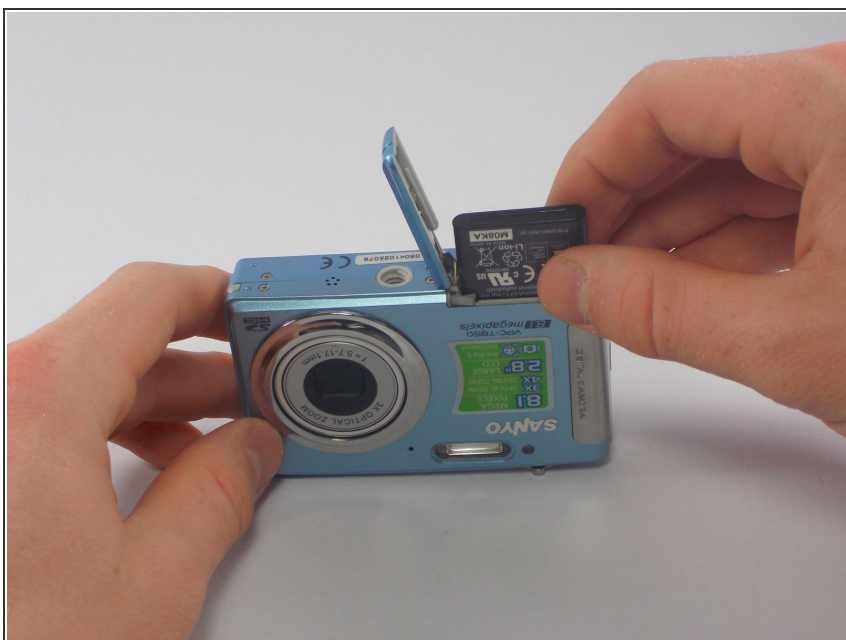
- Locate the hatch found on the bottom of the camera.
- Open the hatch by gripping the small notch and sliding it outwards.

Step 3



- Push the small, plastic arm out of the way to free the battery.
- ⓘ The battery is spring loaded and will pop out slightly when the arm is moved.

Step 4



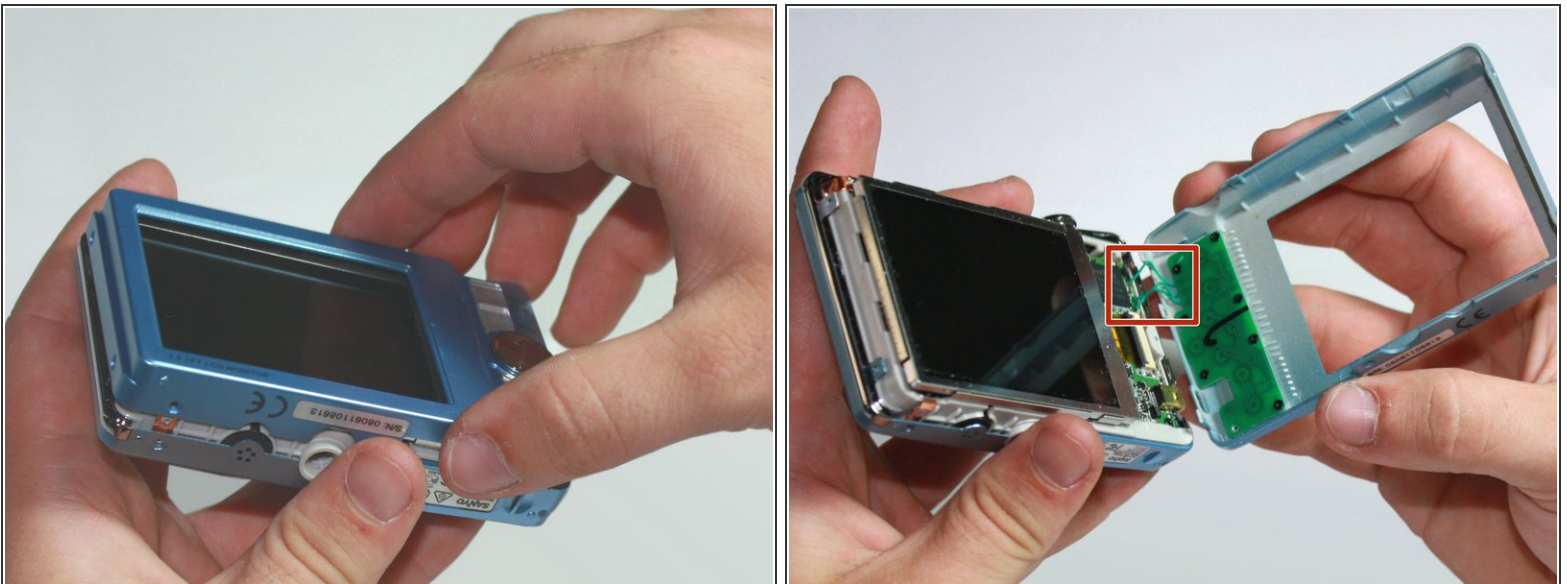
- Pull the battery out of the camera and close the hatch.
- ★ To reinsert, there is a triangle on the battery indicating which direction to slide it in.

Step 5 — Outer Casing



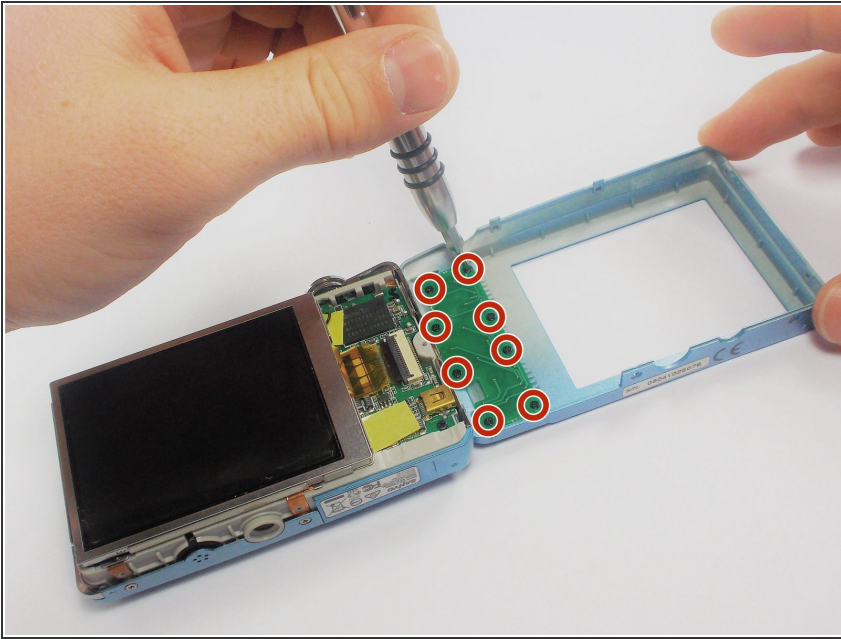
- Using your Phillips #000 Screwdriver, remove the eight screws located around the sides and bottom of the camera.
- ⓘ Be sure to keep track of the side each screw comes from, as they come in different lengths.

Step 6



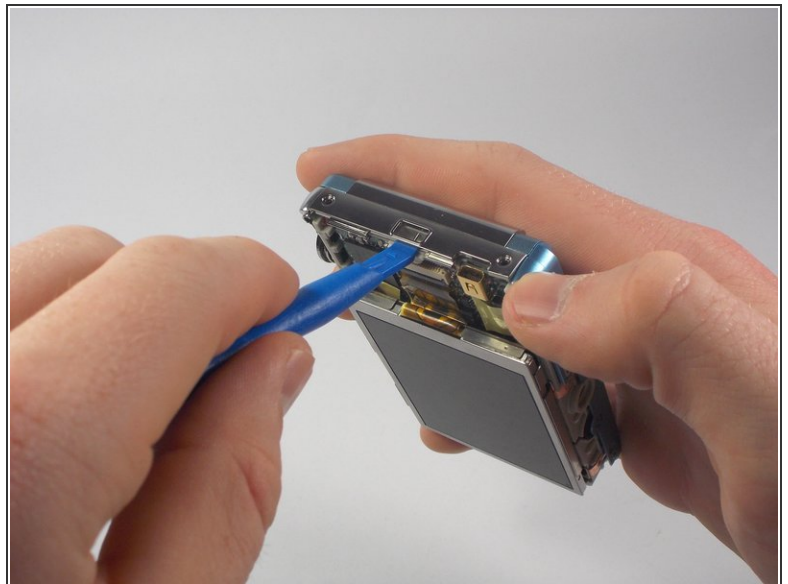
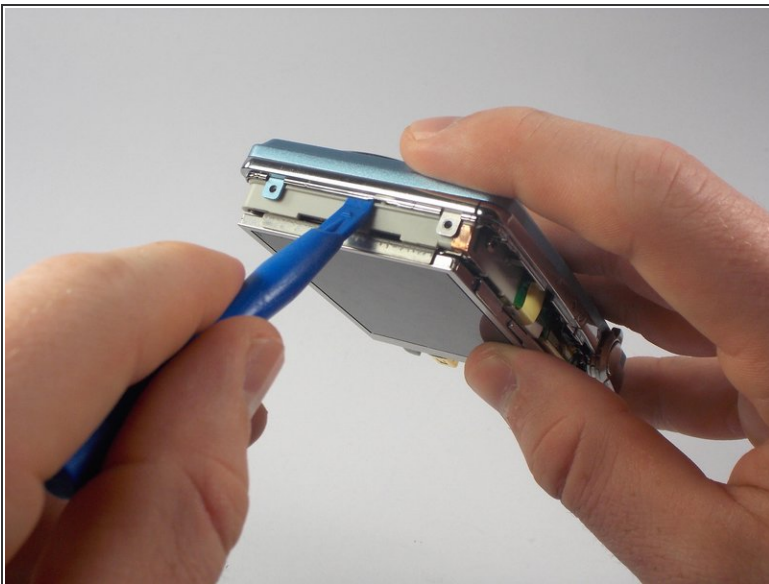
- Orient the camera so the display is facing up.
 - Gently pull off the rear panel surrounding the display.
- ⚠ There are still three green wires connecting the panel to the rest of the camera.
- ⓘ Use your prying tool if you have difficulties removing the panel by hand.

Step 7



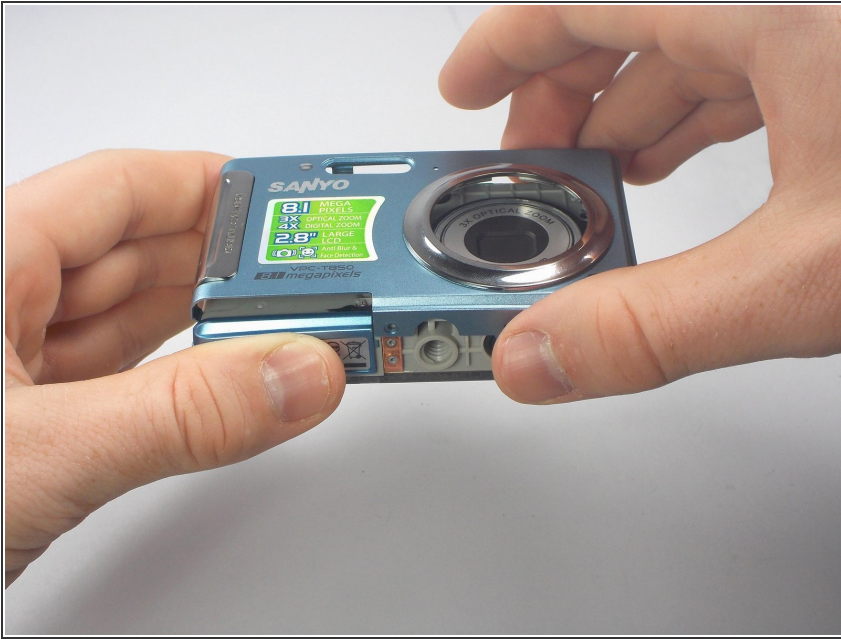
- Remove the eight black screws connecting the keypad circuit board to the rear panel.

Step 8



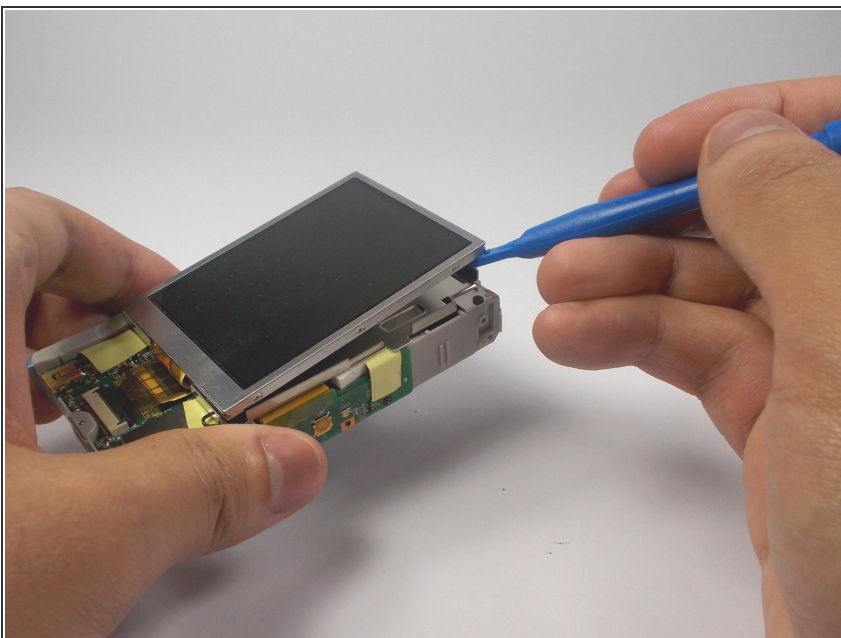
- With a plastic opening tool, gently remove the chrome framing on the left and right sides of the camera.

Step 9



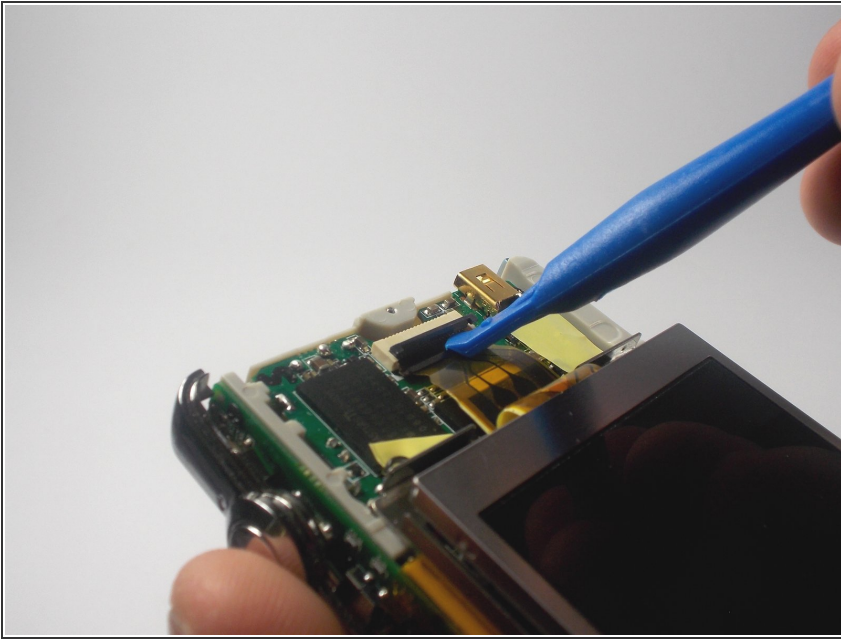
- Flip the camera over so the lens is facing up.
- Gently lift up the front panel to remove it from the rest of the camera.
- ❗ Use your plastic opening tool if you have difficulties removing the panel by hand.

Step 10 — LCD Display



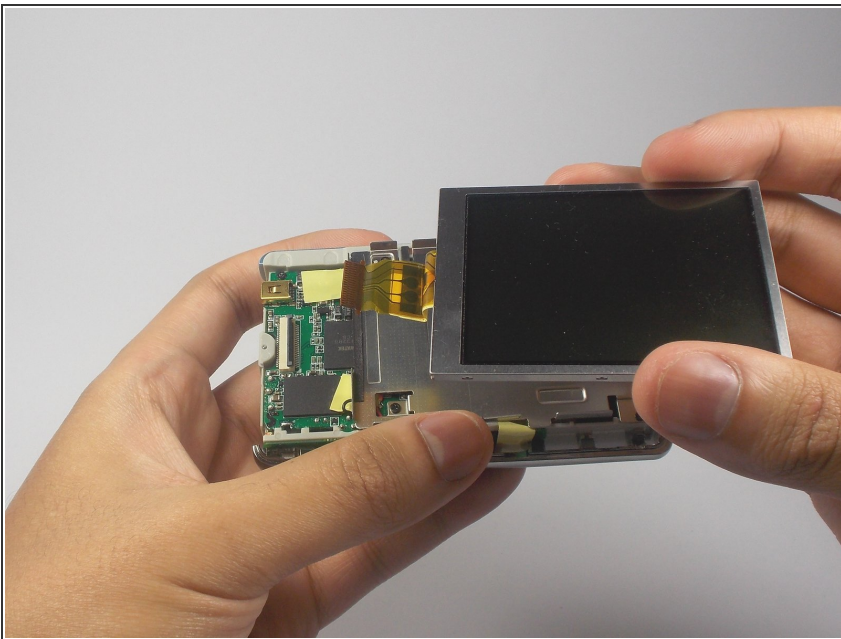
- Flip the device over to where the display is located.
- Using your plastic opening tool, lift the display out of its metal housing.

Step 11



- Locate the orange ribbon connecting the display to the camera.
- Using your plastic opening tool, gently lift the black bar holding the orange ribbon to the camera.

Step 12



- With two fingers held firmly on the display, gently pull the orange ribbon out of the camera.
- ⚠ Pull slowly to avoid severing the orange ribbon from the display.

To reassemble your device, follow these instructions in reverse order.