



# Sanyo VPC-T850 Outer Casing Replacement

This is a guide for removing the plastic casing surrounding the Sanyo VPC-T850. Removing the outer casing is necessary to reach any internal components of the camera.

Written By: James Robinson

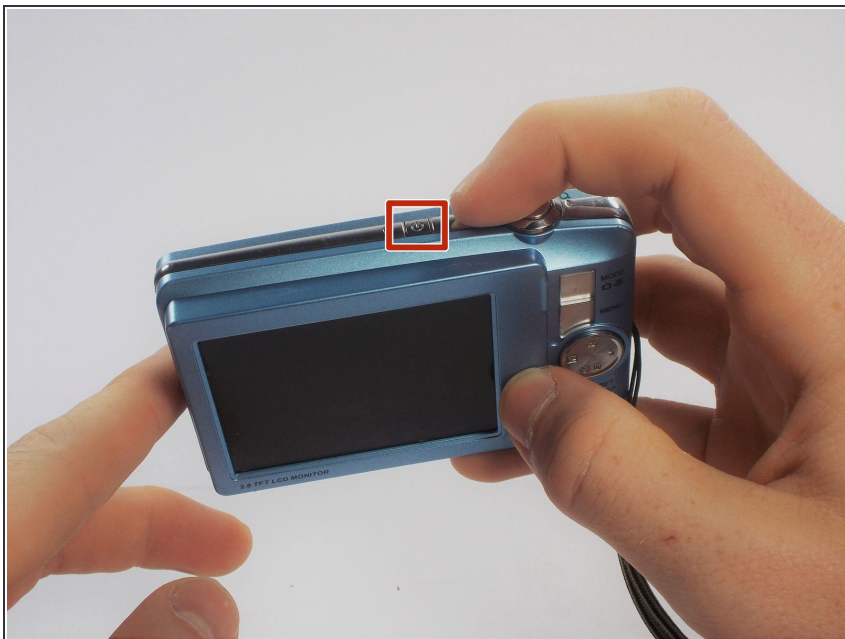


---

 **TOOLS:**

- [Phillips #000 Screwdriver](#) (1)
  - [iFixit Opening Tools](#) (1)
-

## Step 1 — Battery



- Make sure the camera is powered off by pressing and holding the small, square button embedded in the top rim of the camera.

## Step 2



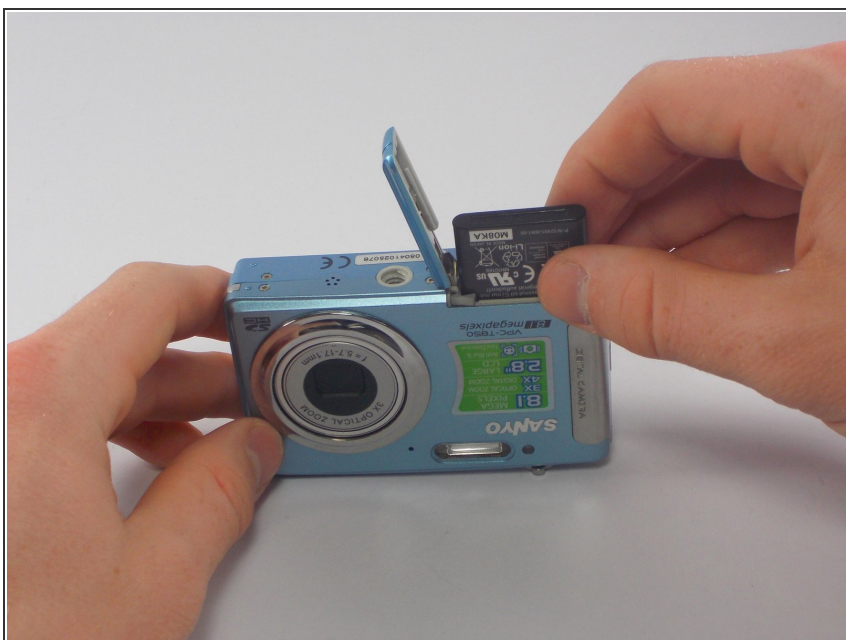
- Locate the hatch found on the bottom of the camera.
- Open the hatch by gripping the small notch and sliding it outwards.

### Step 3



- Push the small, plastic arm out of the way to free the battery.
- ⓘ The battery is spring loaded and will pop out slightly when the arm is moved.

### Step 4



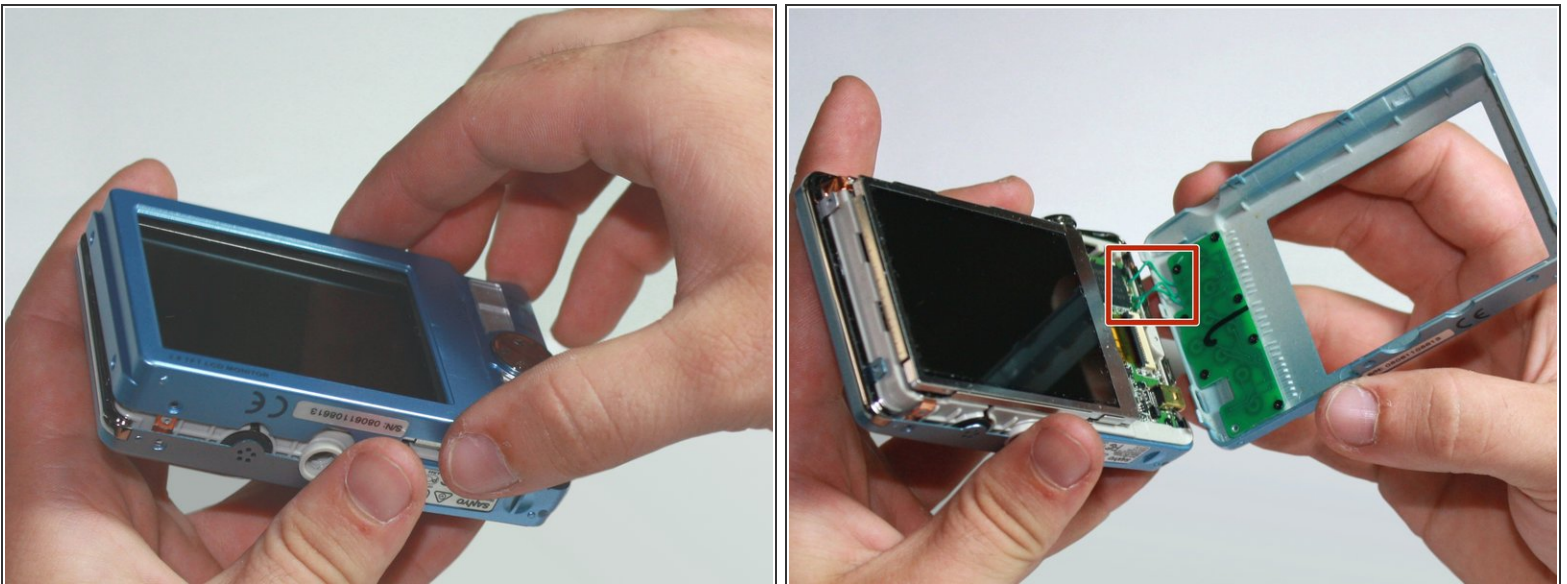
- Pull the battery out of the camera and close the hatch.
- ★ To reinsert, there is a triangle on the battery indicating which direction to slide it in.

## Step 5 — Outer Casing



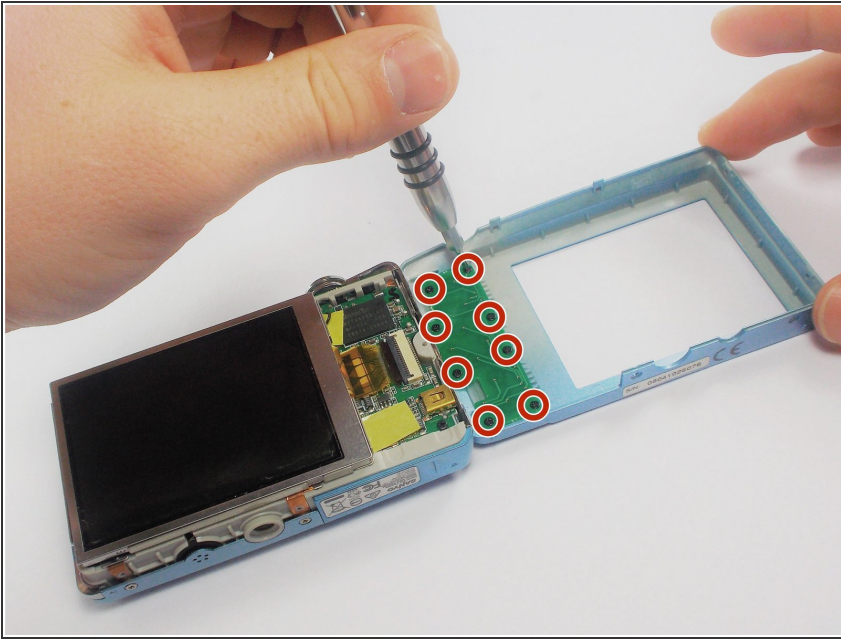
- Using your Phillips #000 Screwdriver, remove the eight screws located around the sides and bottom of the camera.
- ⓘ Be sure to keep track of the side each screw comes from, as they come in different lengths.

## Step 6



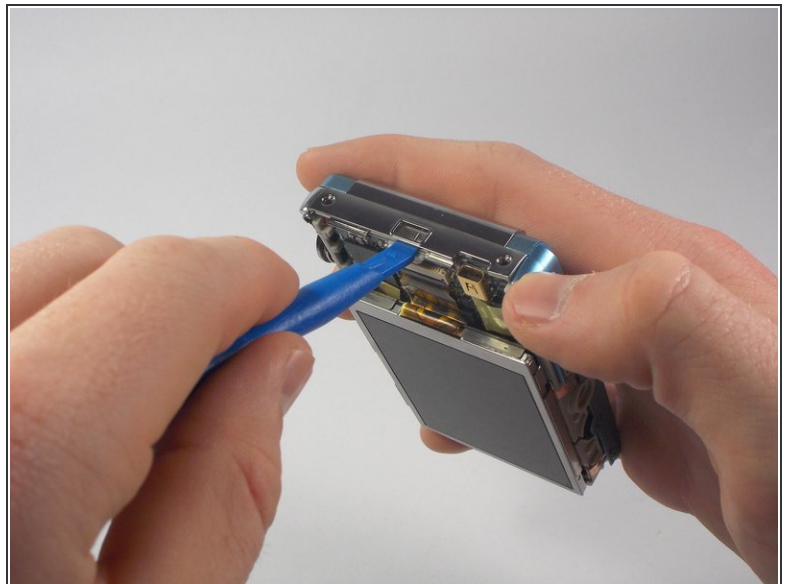
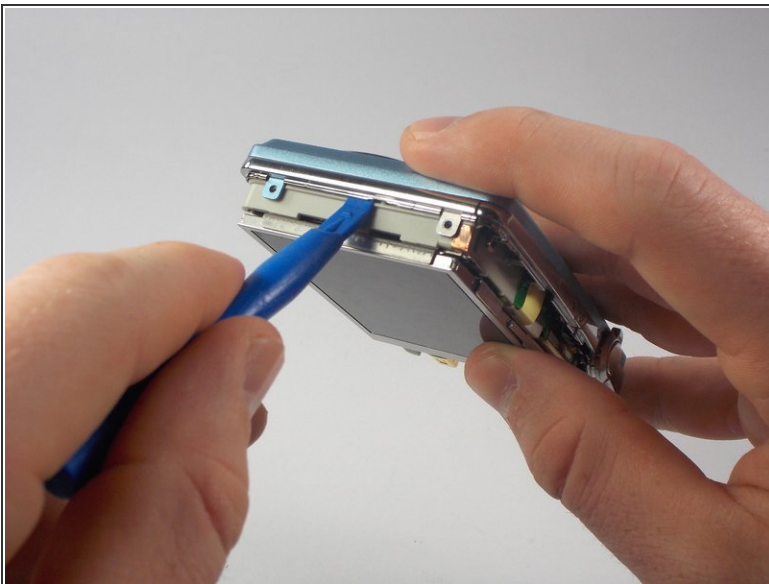
- Orient the camera so the display is facing up.
  - Gently pull off the rear panel surrounding the display.
- ⚠ There are still three green wires connecting the panel to the rest of the camera.
- ⓘ Use your prying tool if you have difficulties removing the panel by hand.

## Step 7



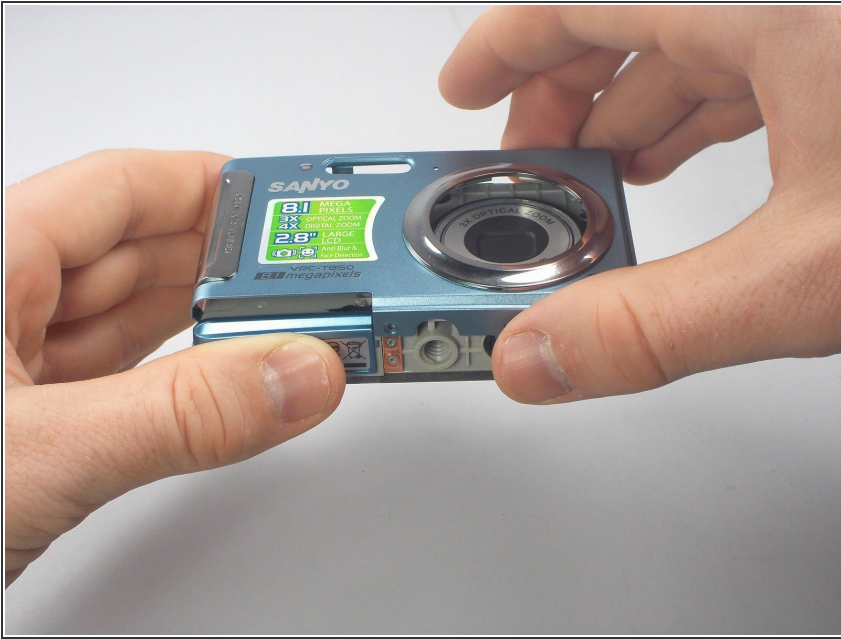
- Remove the eight black screws connecting the keypad circuit board to the rear panel.

## Step 8



- With a plastic opening tool, gently remove the chrome framing on the left and right sides of the camera.

## Step 9



- Flip the camera over so the lens is facing up.
- Gently lift up the front panel to remove it from the rest of the camera.
- ① Use your plastic opening tool if you have difficulties removing the panel by hand.

To reassemble your device, follow these instructions in reverse order.