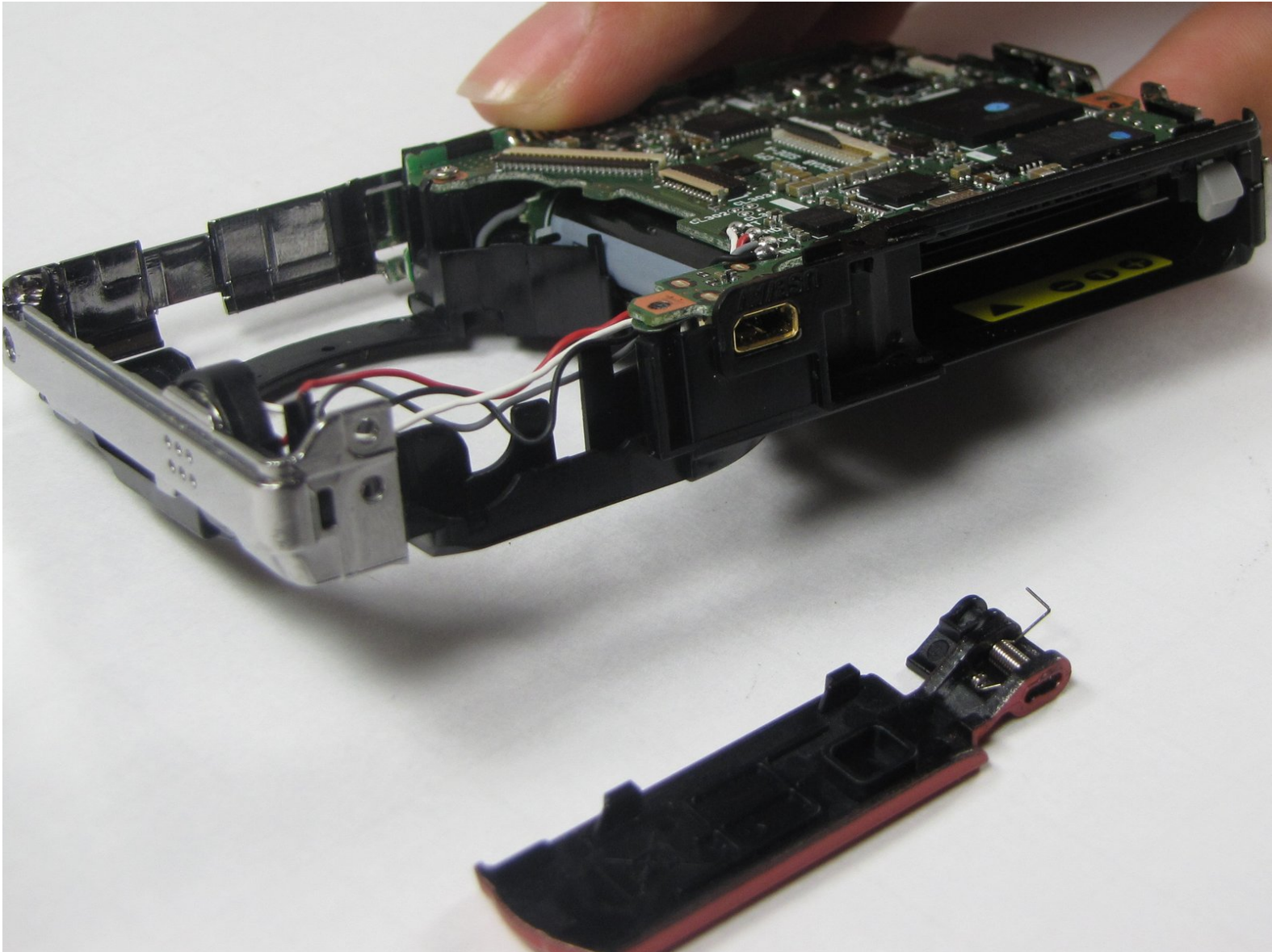




Sanyo VPC-X1200 Main Board Replacement

Written By: Anthony Giardina



INTRODUCTION

This guide includes instructions for removing the main board.

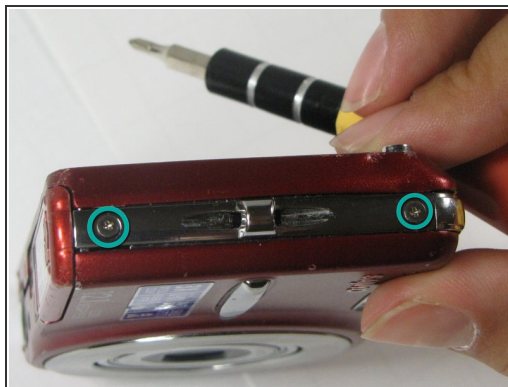
The main board consists of the motherboard, plastic frame, flash capacitor, and battery tray. The motherboard cannot be separated from the main board without breaking either of the pieces. Luckily, main boards are sold as one unit.



TOOLS:

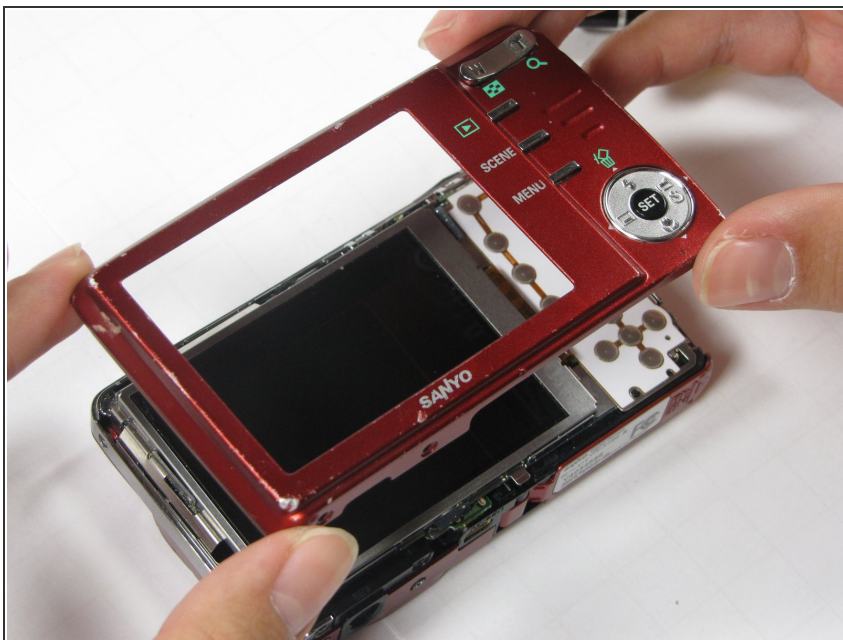
- [Phillips #00 Screwdriver](#) (1)
 - [Spudger](#) (1)
-

Step 1 — Back Case



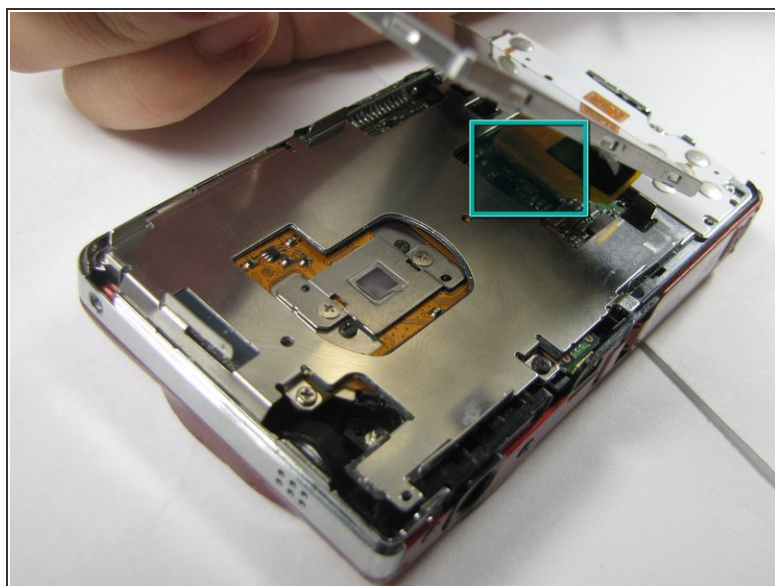
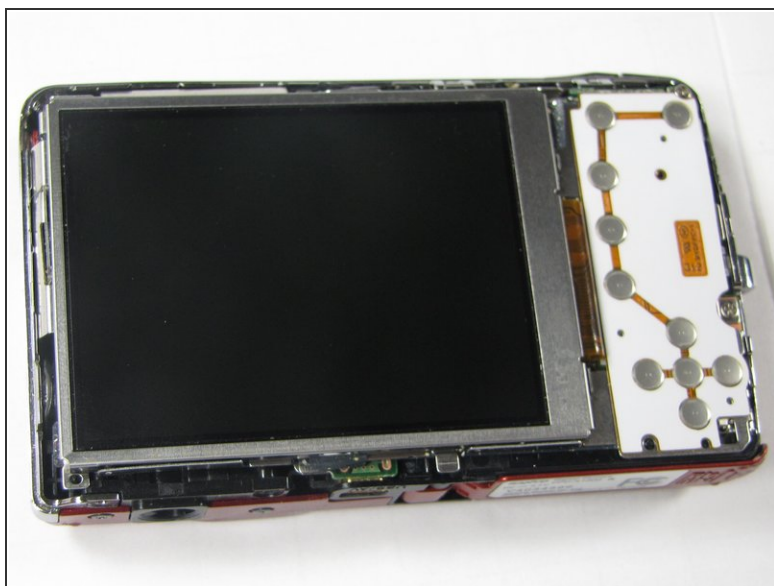
- Remove the five case screws with a Phillips #00 Screwdriver.
- Five 3.5mm Phillips Screws

Step 2



- Gently lift up the back cover and set aside.

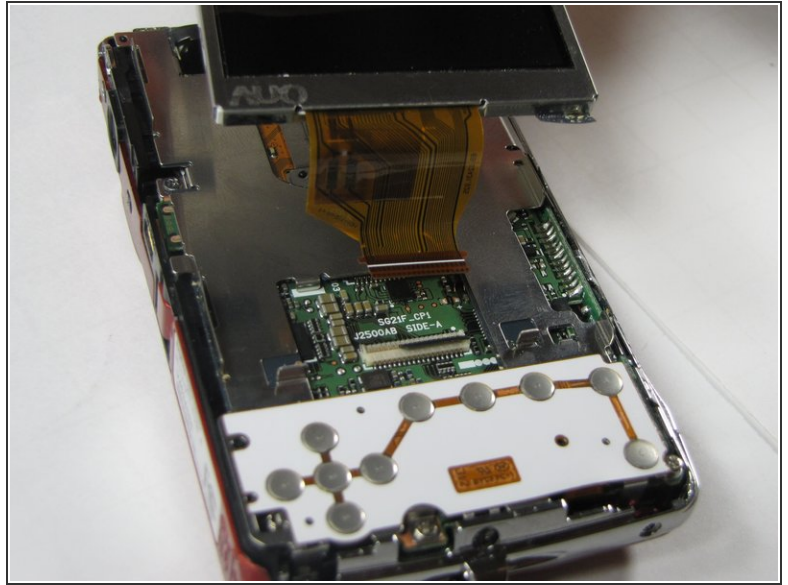
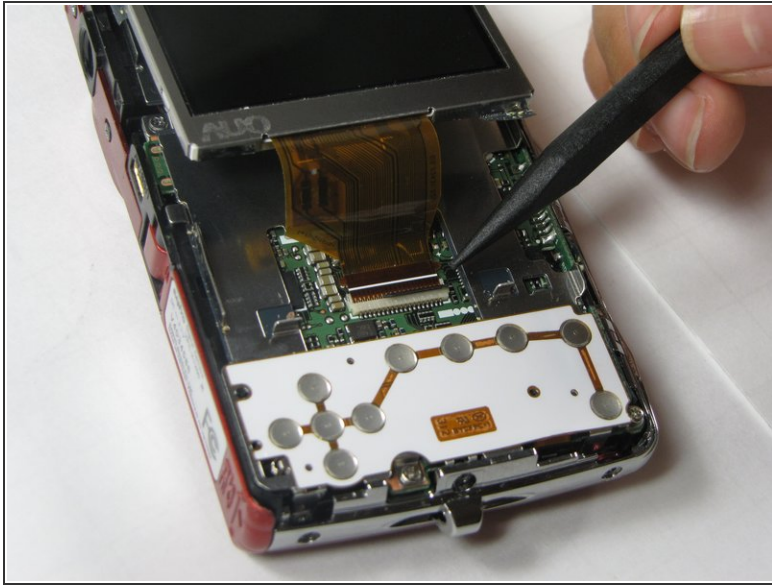
Step 3 — LCD Screen



- Gently lift up on the left side of the LCD and slowly pull it to the left side of the camera but do not remove entirely, there is a ribbon connector.

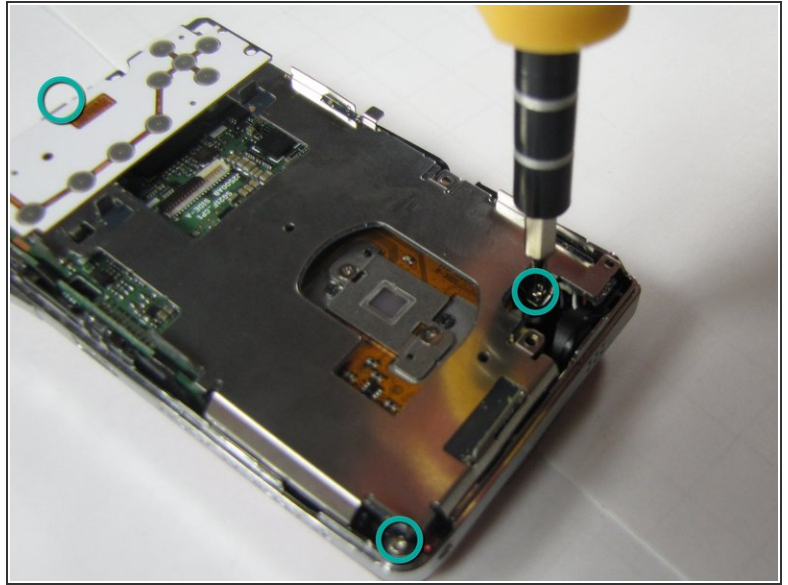
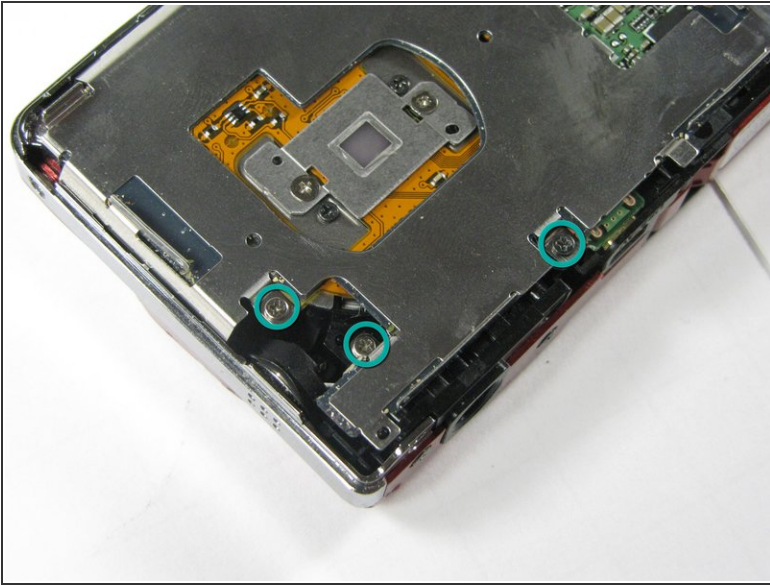
⚠ Be careful not to rip out the ribbon connector.

Step 4



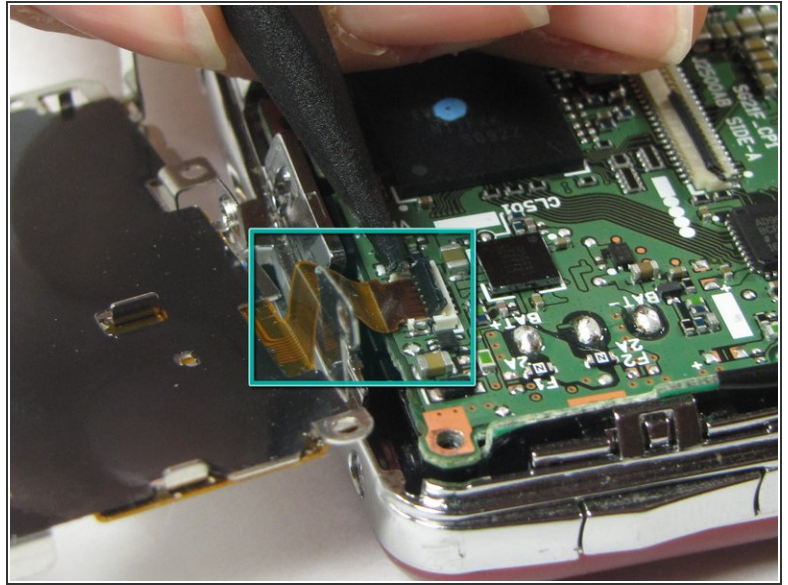
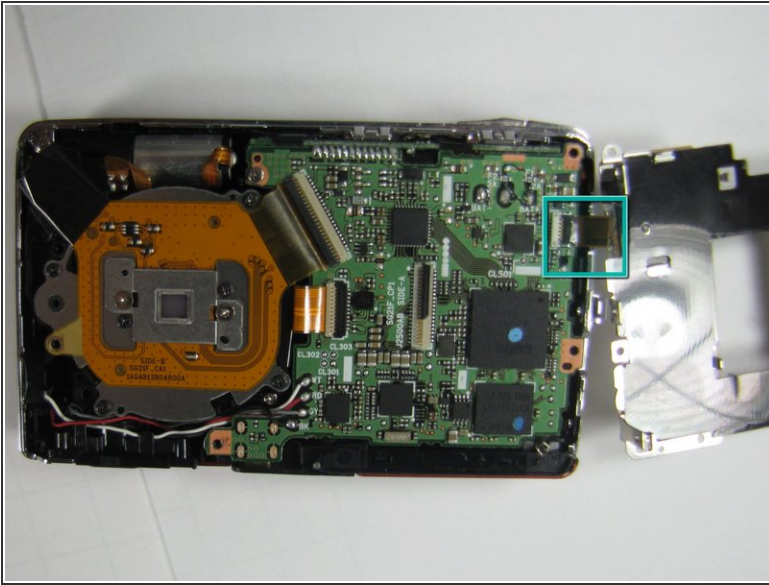
- To clear the ribbon connection underneath the screen, lift up the black ribbon gate with the spudger.
- Gently lift ribbon out of the gate and set screen aside.

Step 5 — Button Plate



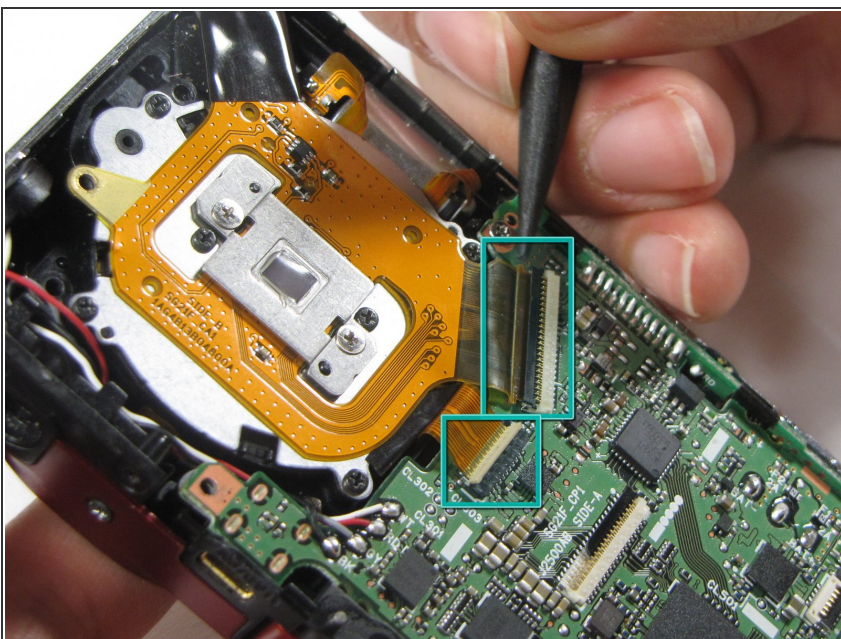
- There are five screws of three different sizes which need removal.
- One 4.5mm screw
- Four 3.5mm screws, one on the button side
- One 5.5mm screws

Step 6



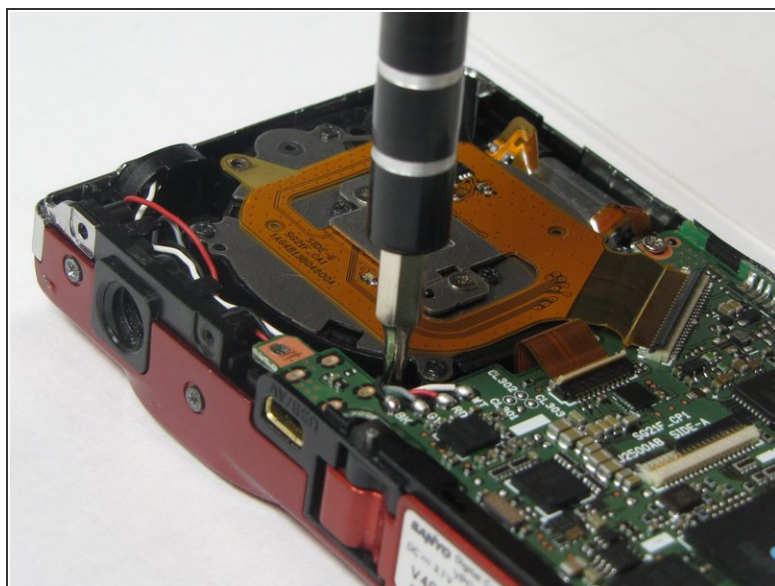
- Slowly lift metal tray to the right.
- ⚠ Be careful not to bend the screw tabs or rip out the ribbon cable.
- Remove ribbon cable by using the spudger to lift up the black ribbon gate to release the ribbon

Step 7 — Lens Unit



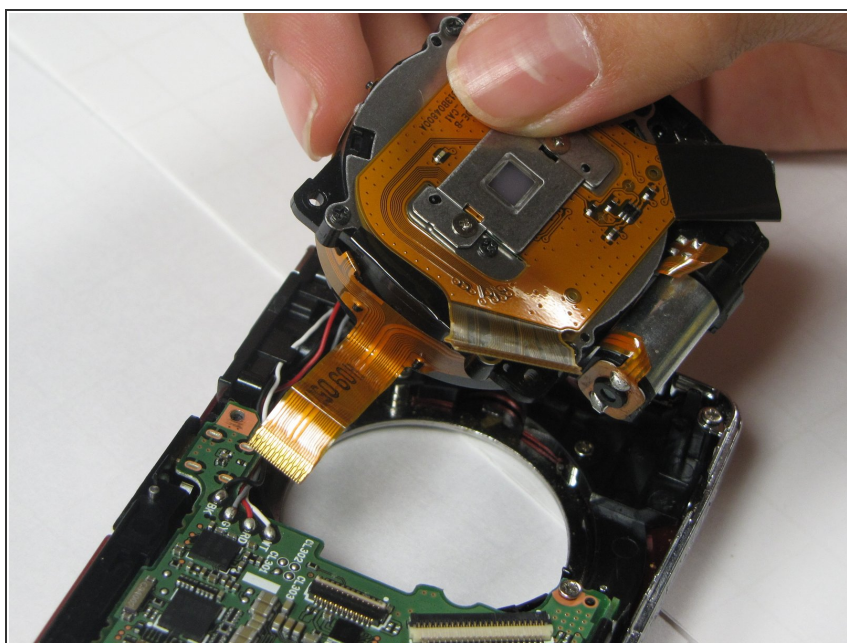
- Disconnect the two ribbon cables from the lens unit by using the spudger to lift the ribbon gates.
- ⓘ One gate is black and another is white.

Step 8



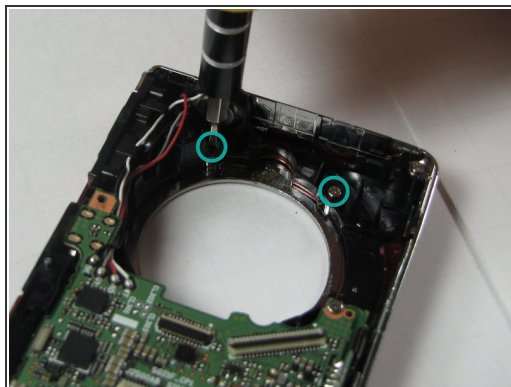
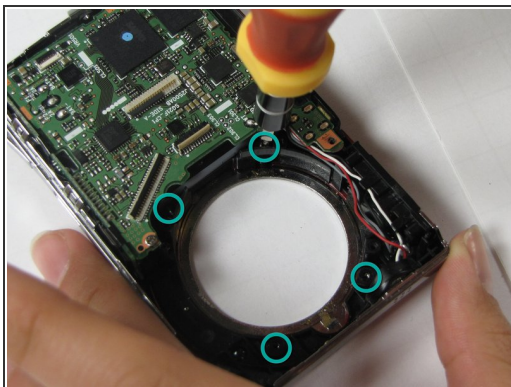
- Remove the three silver screws.
- Three 5.5mm screws

Step 9



- Lift the lens unit free of the camera. A spudger can be used to separate the lens unit if necessary.

Step 10 — Flash Lens



- Remove 4 screws attached to the exterior silver bezel.
- Four 3.5mm screws

Step 11



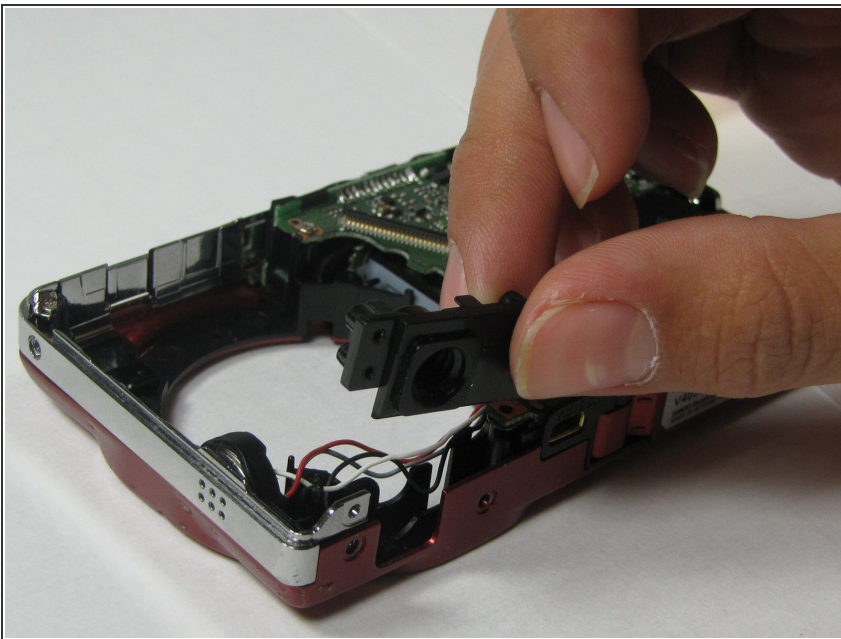
- Remove round silver bezel from the front of the camera.

Step 12



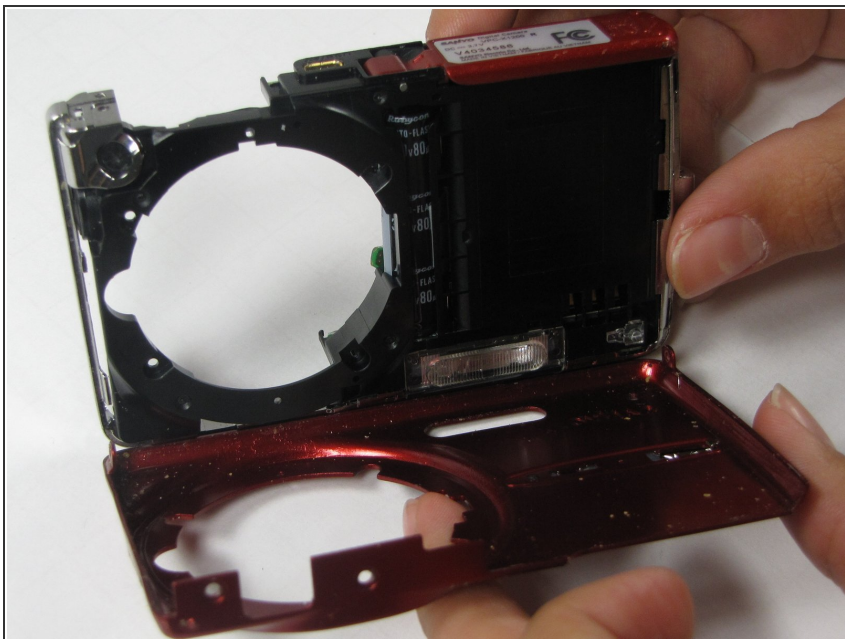
- Remove the two screws on the bottom of the front cover.

Step 13



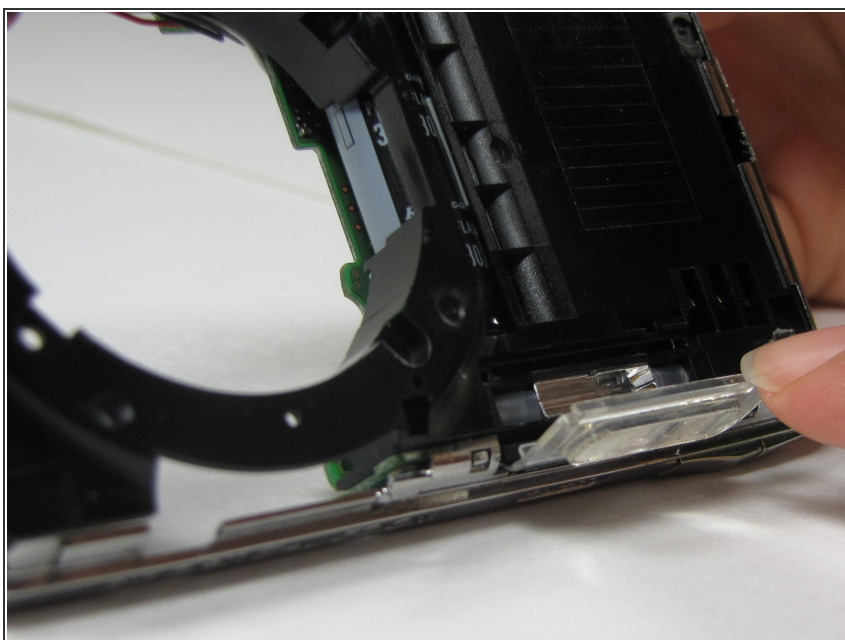
- Remove tripod mount.

Step 14



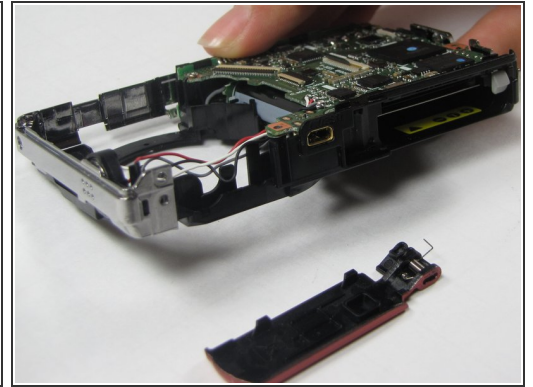
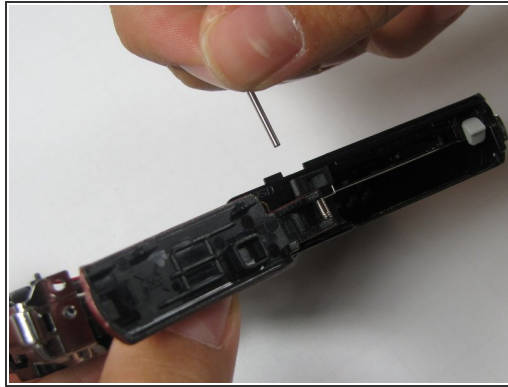
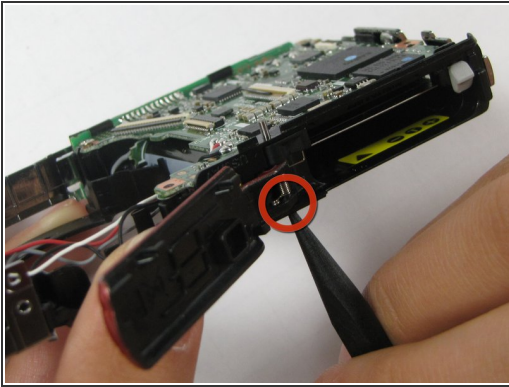
- Carefully lift off the front cover plate of the camera.

Step 15



- Remove the flash lens using the spudger or a finger.
- It will be attached by a piece of tape, peel the lens off of that piece of tape without removing the tape.

Step 16 — Main Board



- Push out pin that holds the door hinge together
- Pull out the pin. Be careful to keep track of the spring and black spacer.
- Set the battery door aside

To reassemble your device, follow these instructions in reverse order.