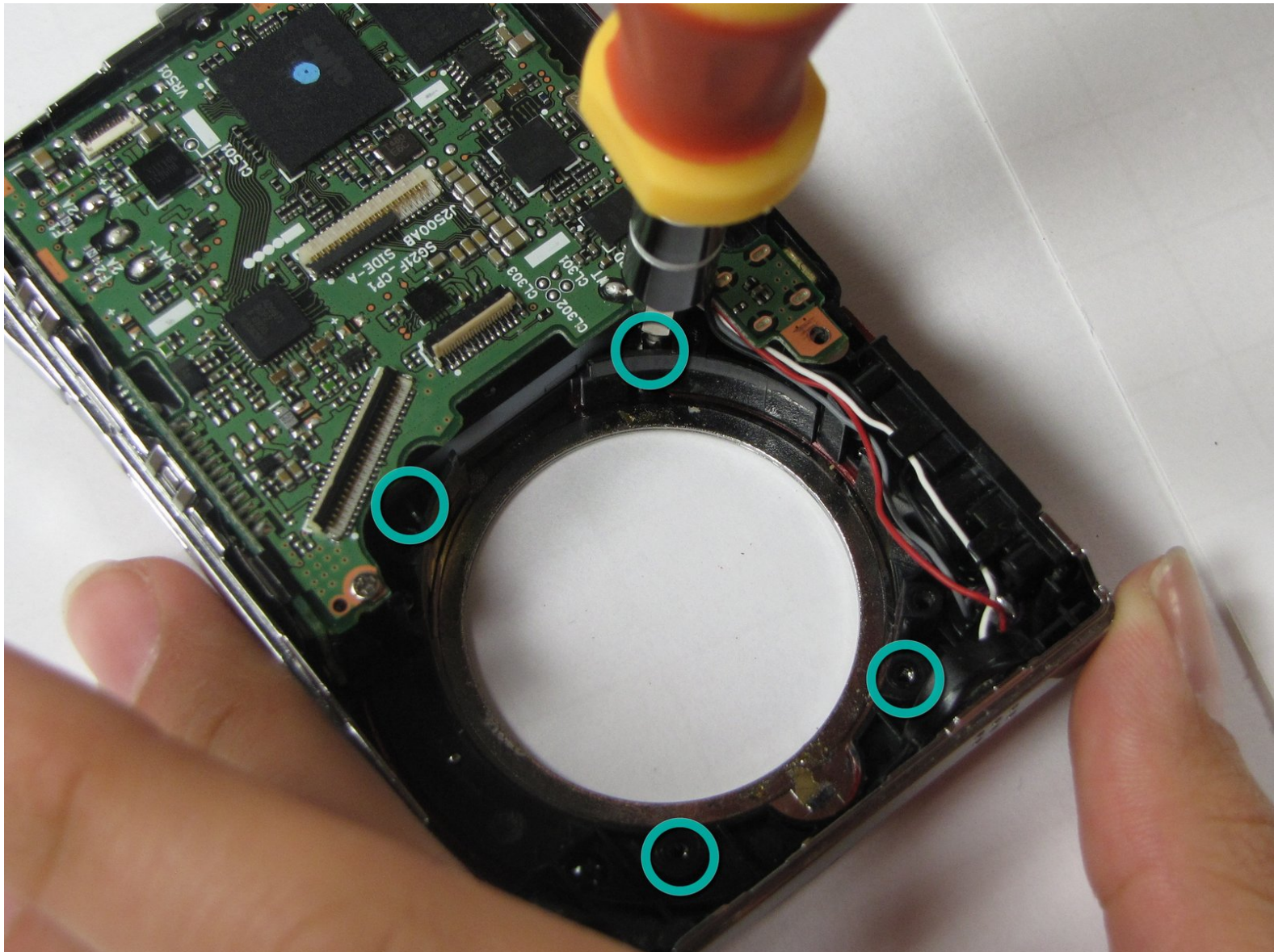




Sanyo VPC-X1200 flash replacement

Written By: Anthony Giardina



INTRODUCTION

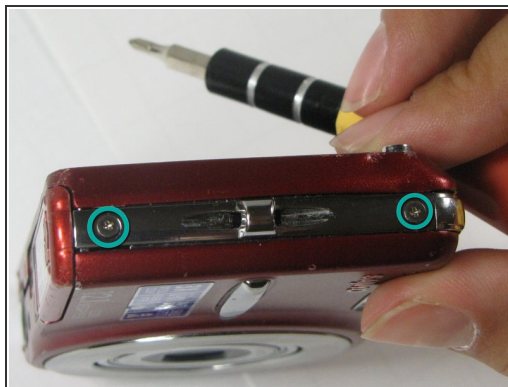
This guide will help you to remove and replace the flash lens



TOOLS:

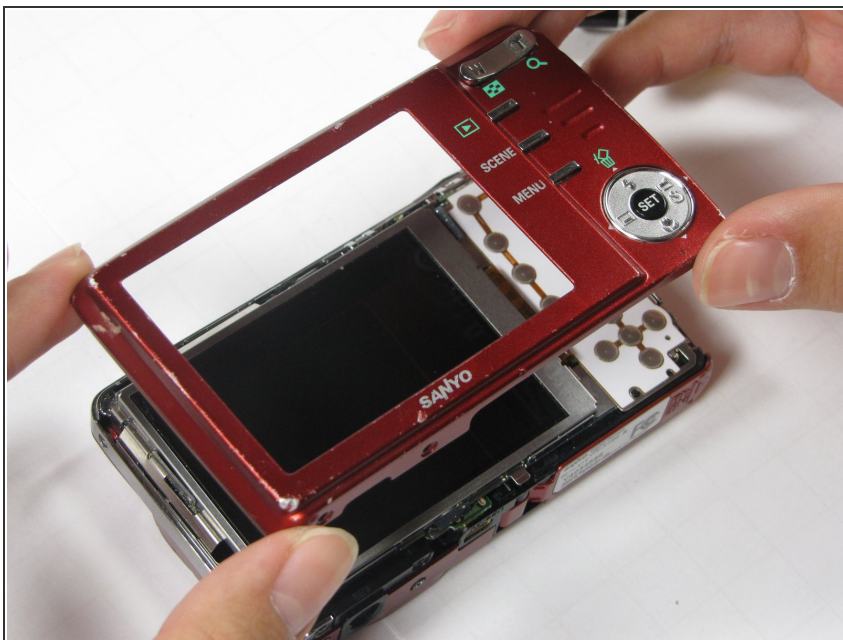
- [Phillips #00 Screwdriver](#) (1)
 - [Spudger](#) (1)
-

Step 1 — Back Case



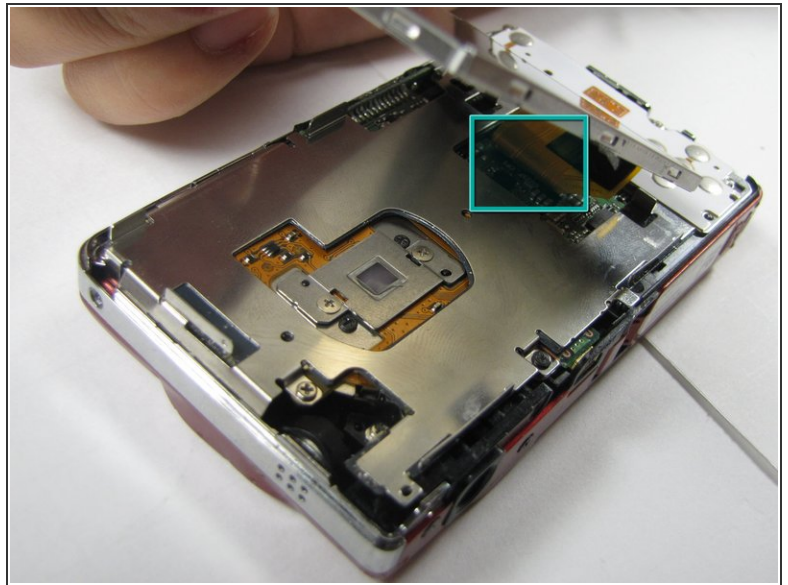
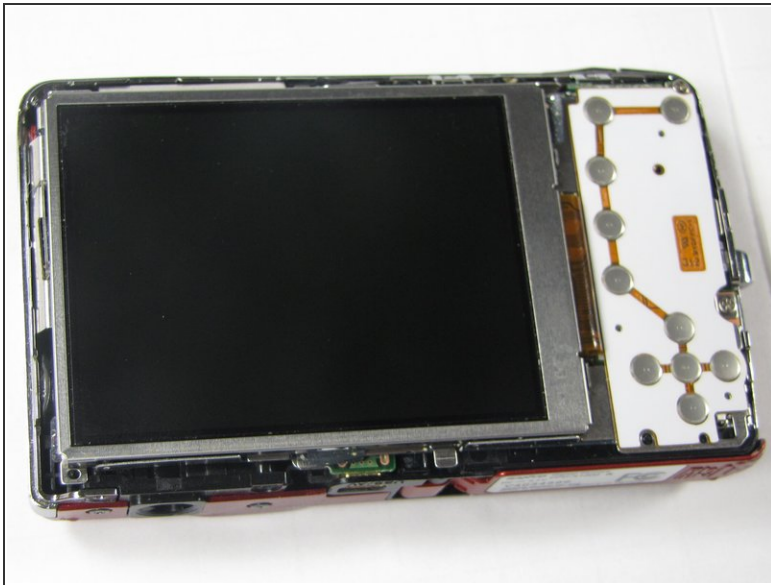
- Remove the five case screws with a Phillips #00 Screwdriver.
- Five 3.5mm Phillips Screws

Step 2



- Gently lift up the back cover and set aside.

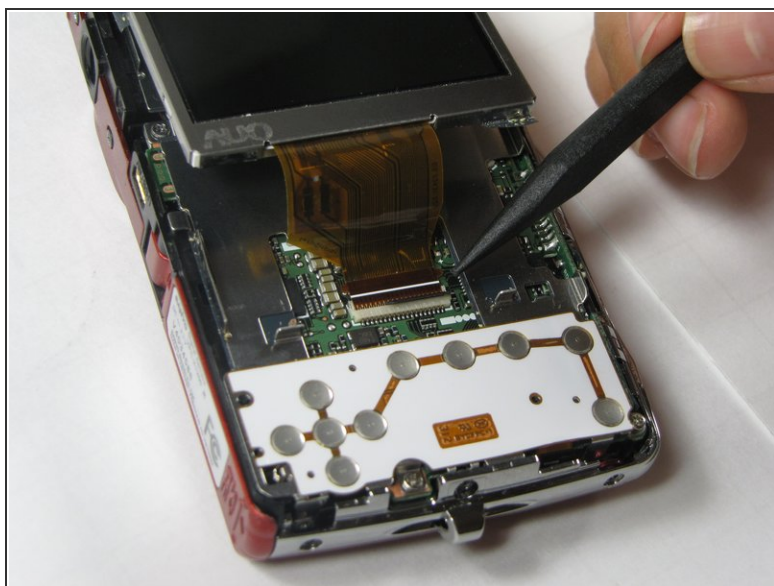
Step 3 — LCD Screen



- Gently lift up on the left side of the LCD and slowly pull it to the left side of the camera but do not remove entirely, there is a ribbon connector.

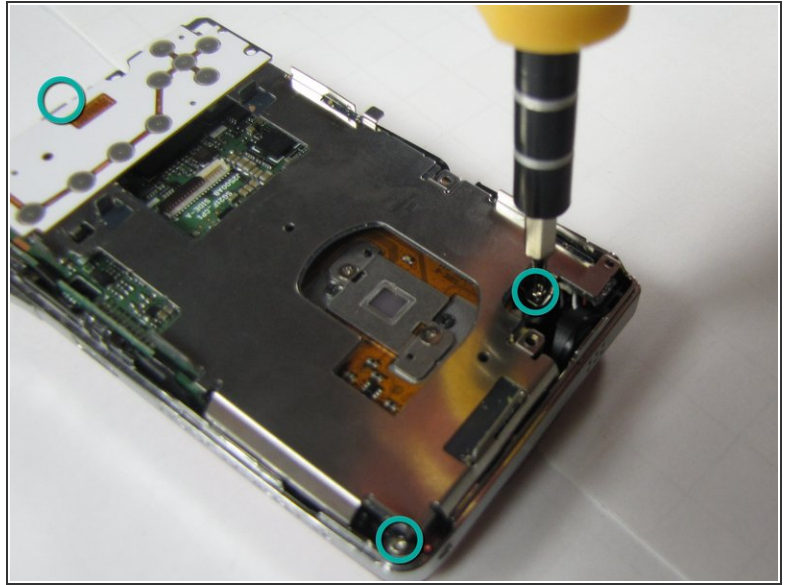
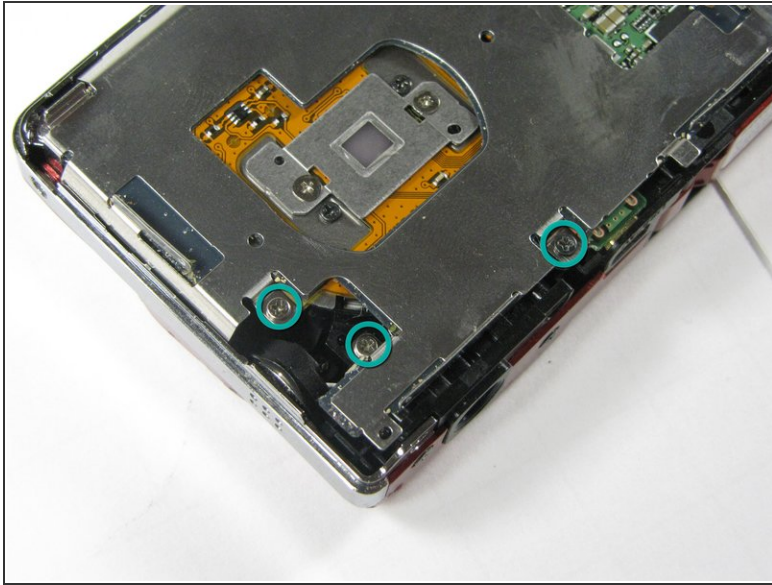
⚠ Be careful not to rip out the ribbon connector.

Step 4



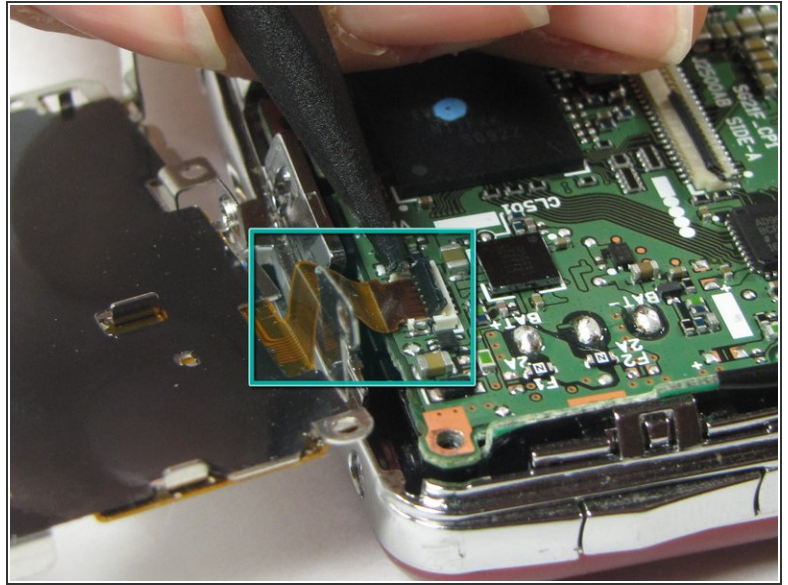
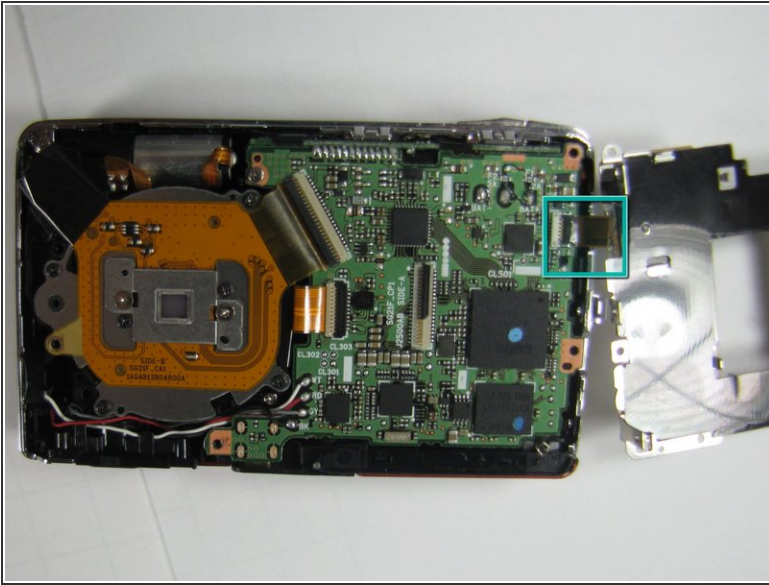
- To clear the ribbon connection underneath the screen, lift up the black ribbon gate with the spudger.
- Gently lift ribbon out of the gate and set screen aside.

Step 5 — Button Plate



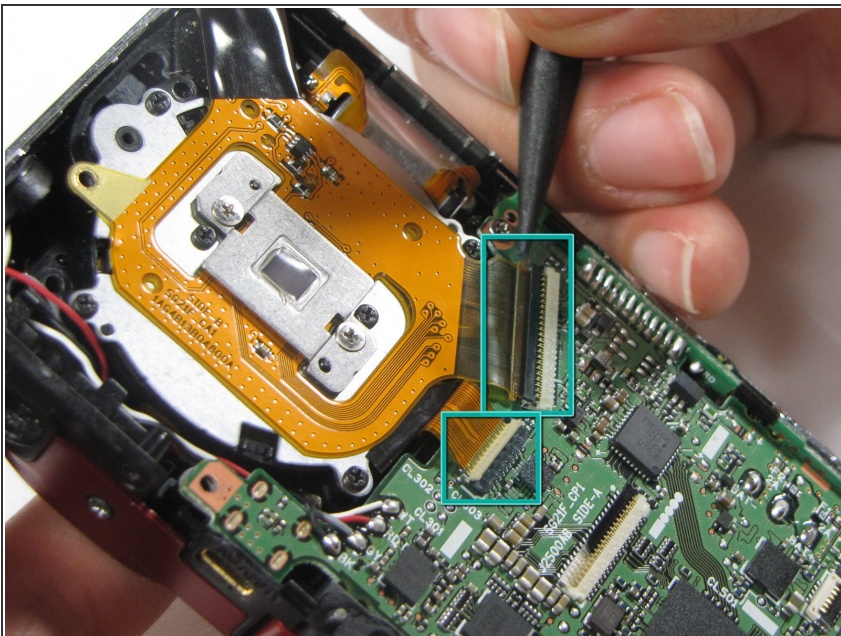
- There are five screws of three different sizes which need removal.
- One 4.5mm screw
- Four 3.5mm screws, one on the button side
- One 5.5mm screws

Step 6



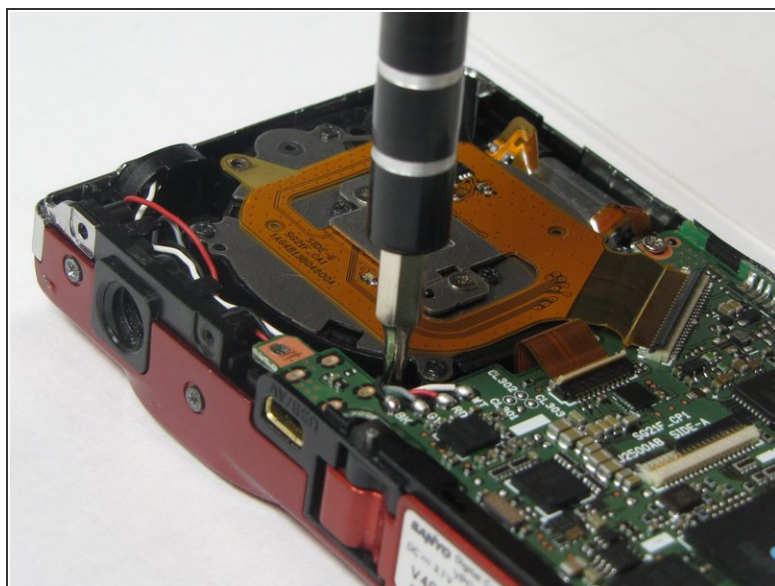
- Slowly lift metal tray to the right.
- ⚠ Be careful not to bend the screw tabs or rip out the ribbon cable.
- Remove ribbon cable by using the spudger to lift up the black ribbon gate to release the ribbon

Step 7 — Lens Unit



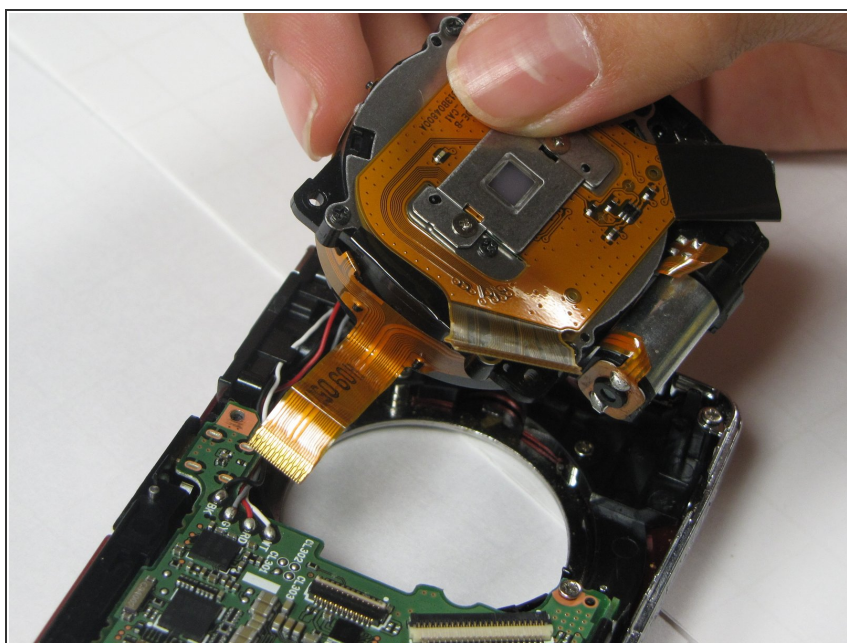
- Disconnect the two ribbon cables from the lens unit by using the spudger to lift the ribbon gates.
- ⓘ One gate is black and another is white.

Step 8



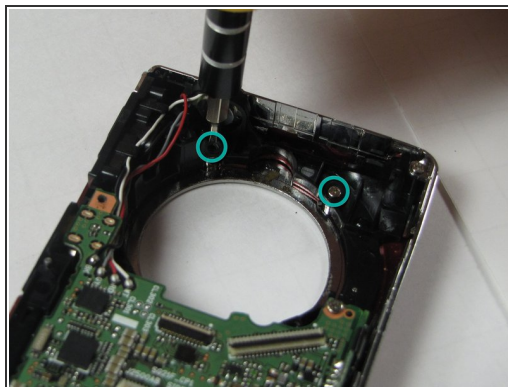
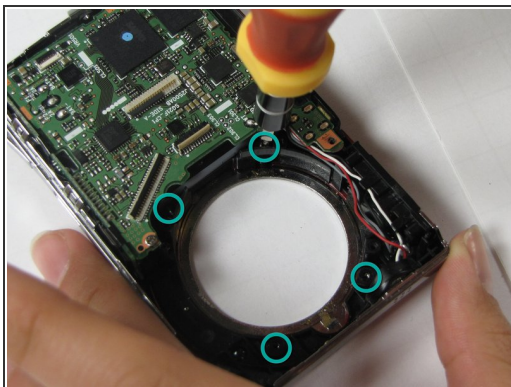
- Remove the three silver screws.
- Three 5.5mm screws

Step 9



- Lift the lens unit free of the camera. A spudger can be used to separate the lens unit if necessary.

Step 10 — Flash Lens



- Remove 4 screws attached to the exterior silver bezel.
- Four 3.5mm screws

Step 11



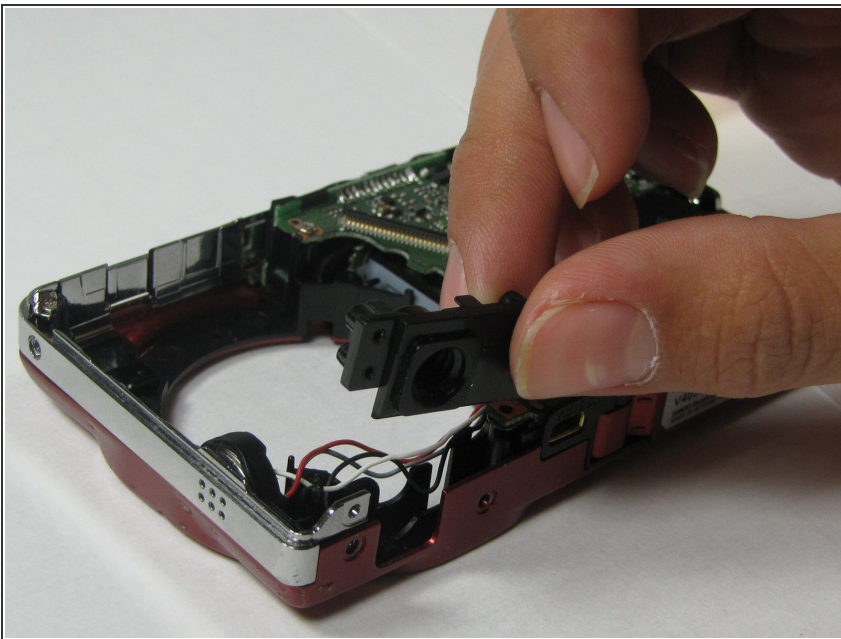
- Remove round silver bezel from the front of the camera.

Step 12



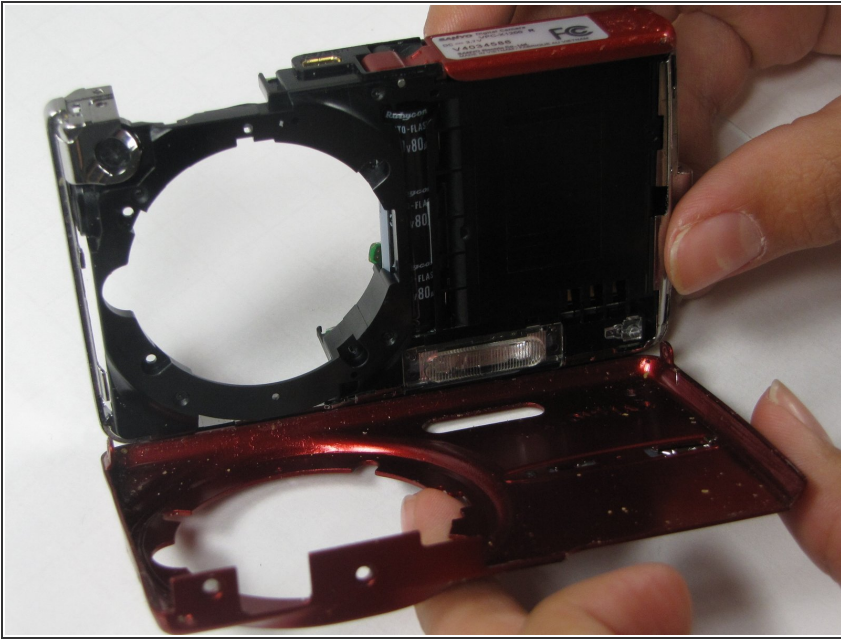
- Remove the two screws on the bottom of the front cover.

Step 13



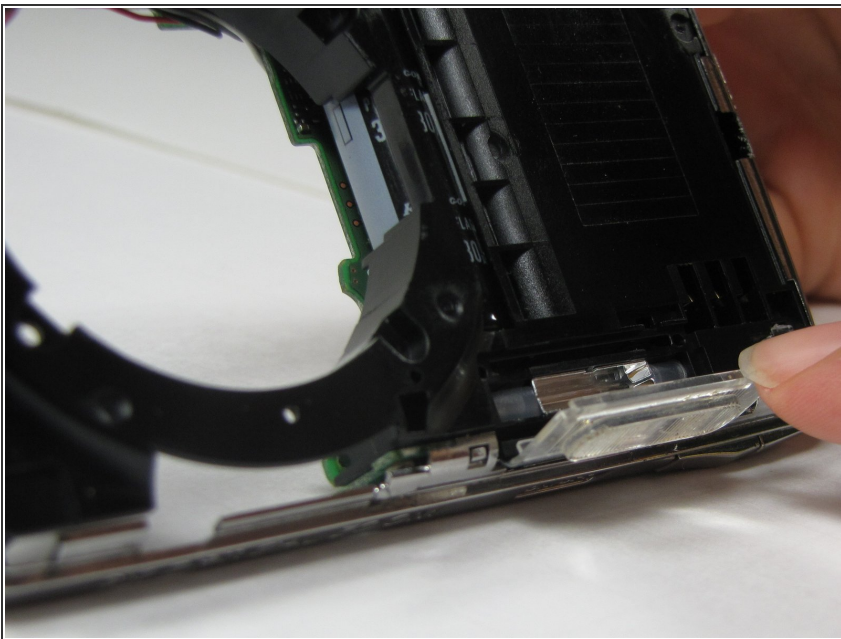
- Remove tripod mount.

Step 14



- Carefully lift off the front cover plate of the camera.

Step 15



- Remove the flash lens using the spudger or a finger.
- It will be attached by a piece of tape, peel the lens off of that piece of tape without removing the tape.

To reassemble your device, follow these instructions in reverse order.