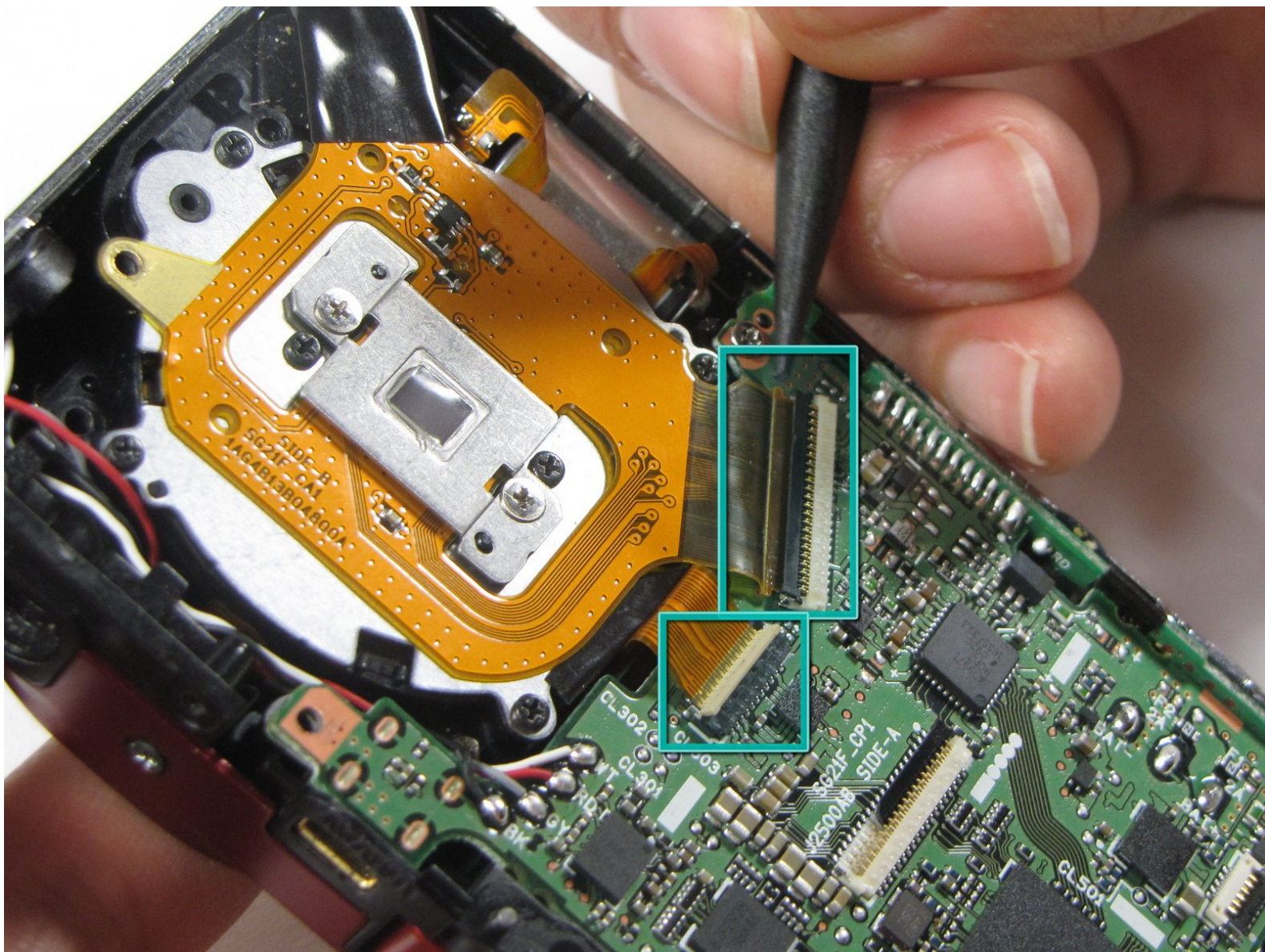




# Sanyo VPC-X1200 shutter assembly replacement

Written By: Anthony Giardina



---

# INTRODUCTION

This guide helps you to remove and replace the lens unit

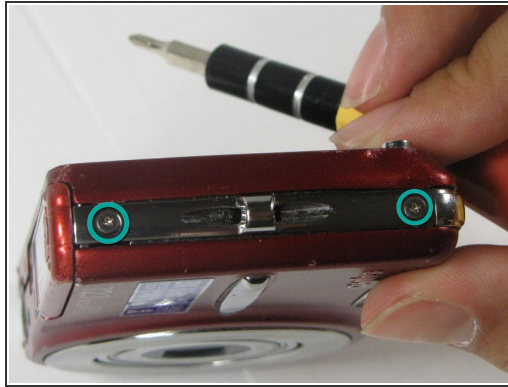


## TOOLS:

- [Phillips #00 Screwdriver](#) (1)
  - [Spudger](#) (1)
-

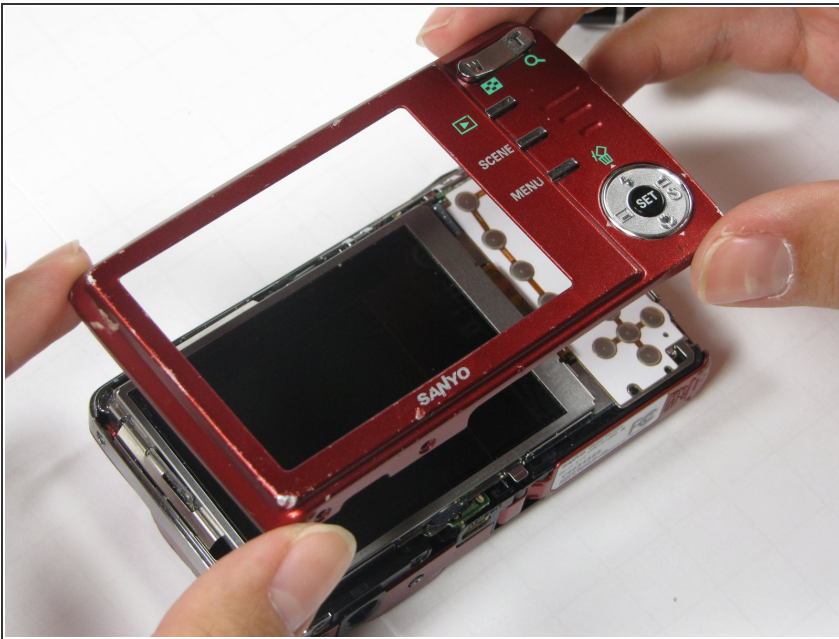


## Step 1 — Back Case



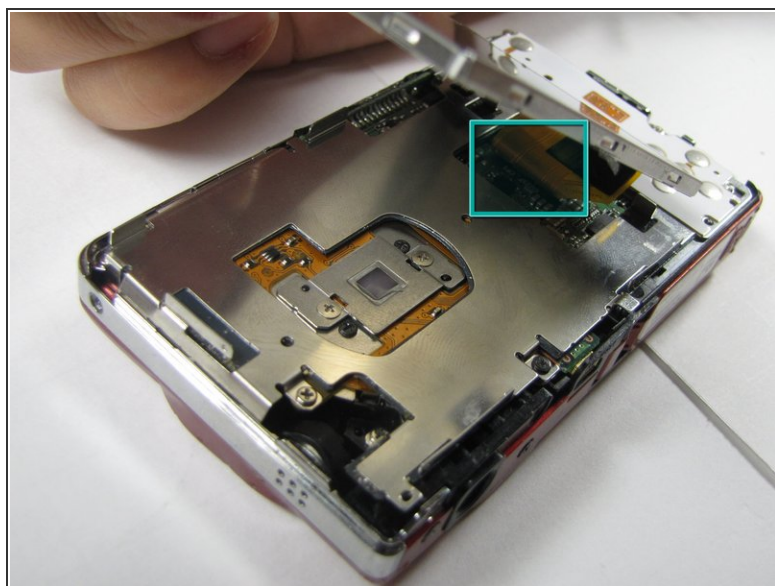
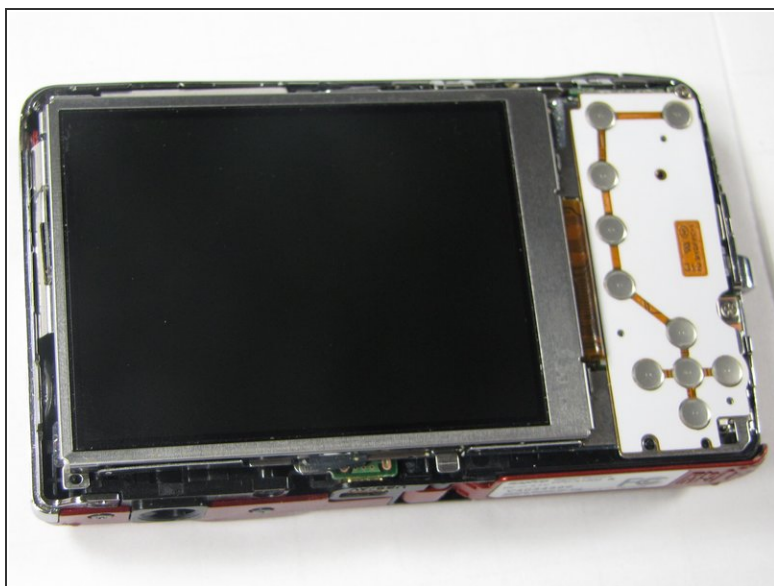
- Remove the five case screws with a Phillips #00 Screwdriver.
- Five 3.5mm Phillips Screws

## Step 2



- Gently lift up the back cover and set aside.

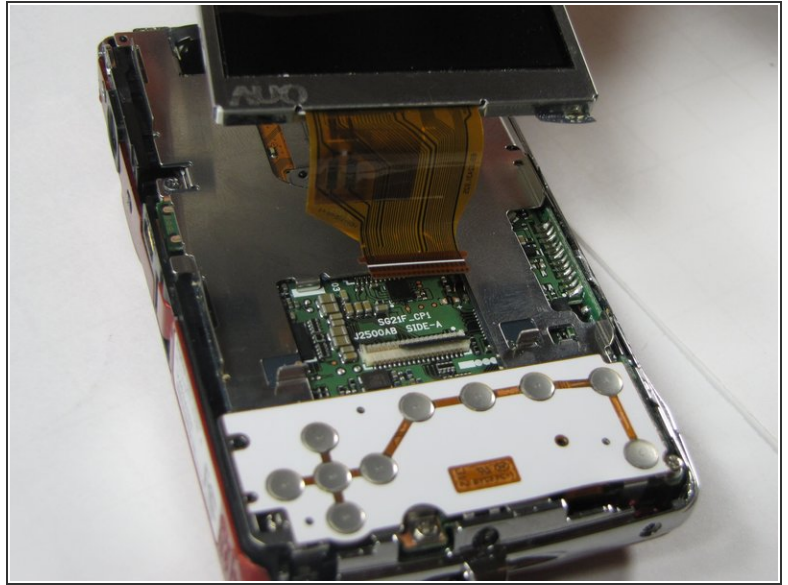
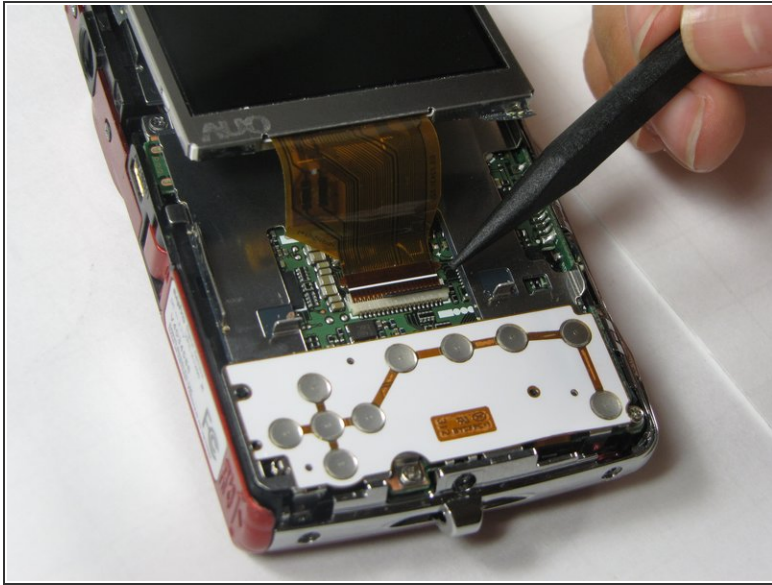
### Step 3 — LCD Screen



- Gently lift up on the left side of the LCD and slowly pull it to the left side of the camera but do not remove entirely, there is a ribbon connector.

⚠ Be careful not to rip out the ribbon connector.

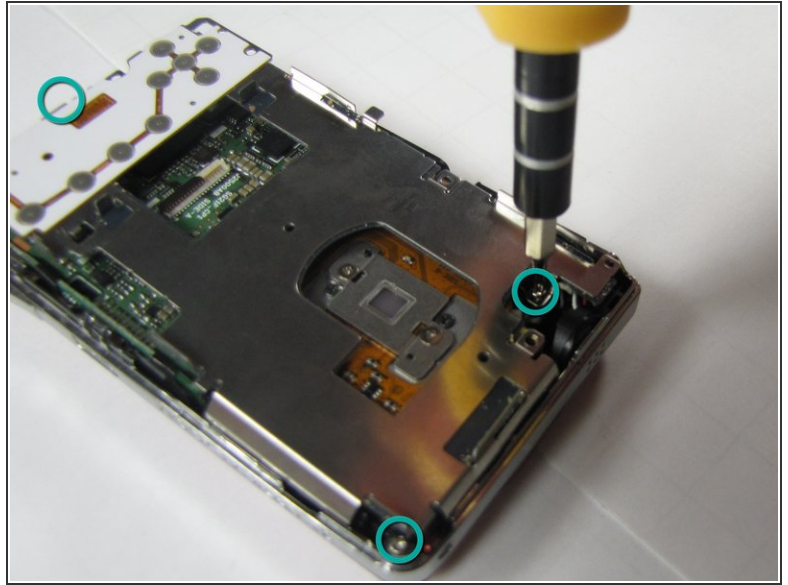
## Step 4



- To clear the ribbon connection underneath the screen, lift up the black ribbon gate with the spudger.
- Gently lift ribbon out of the gate and set screen aside.

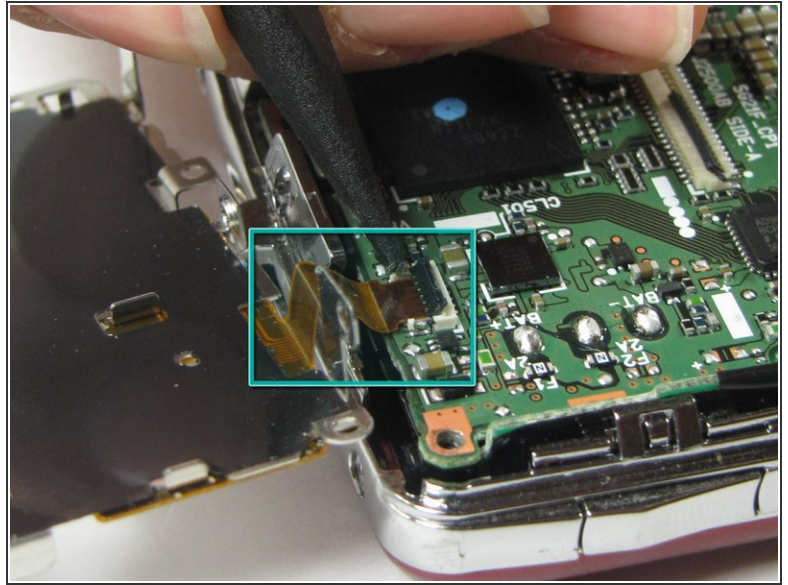


## Step 5 — Button Plate



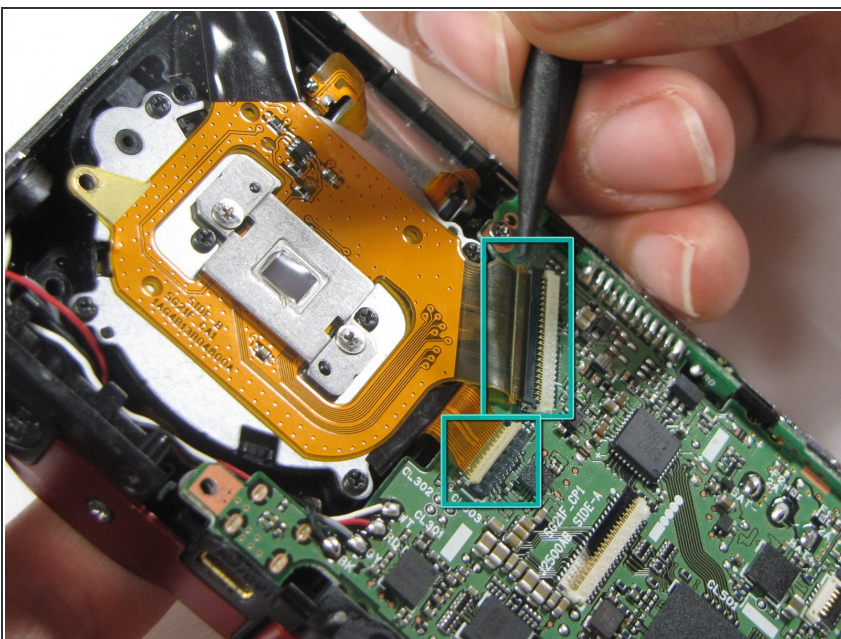
- There are five screws of three different sizes which need removal.
- One 4.5mm screw
- Four 3.5mm screws, one on the button side
- One 5.5mm screws

## Step 6



- Slowly lift metal tray to the right.
- ⚠ Be careful not to bend the screw tabs or rip out the ribbon cable.
- Remove ribbon cable by using the spudger to lift up the black ribbon gate to release the ribbon

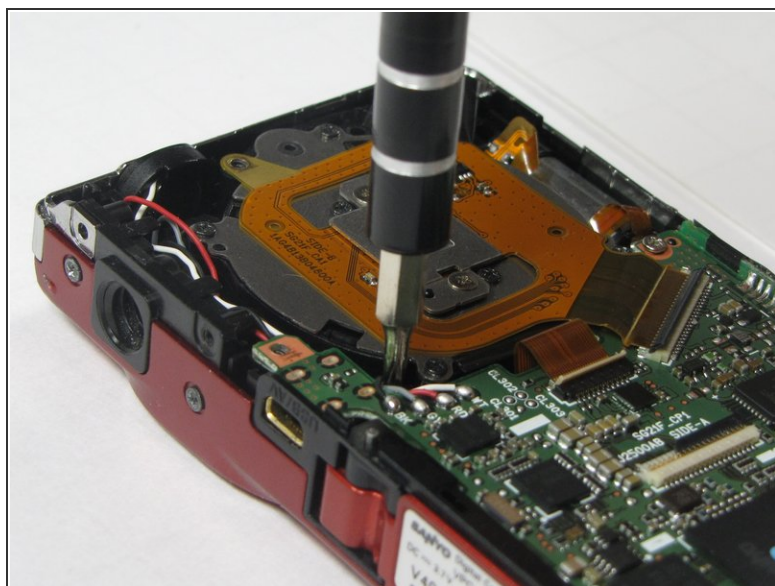
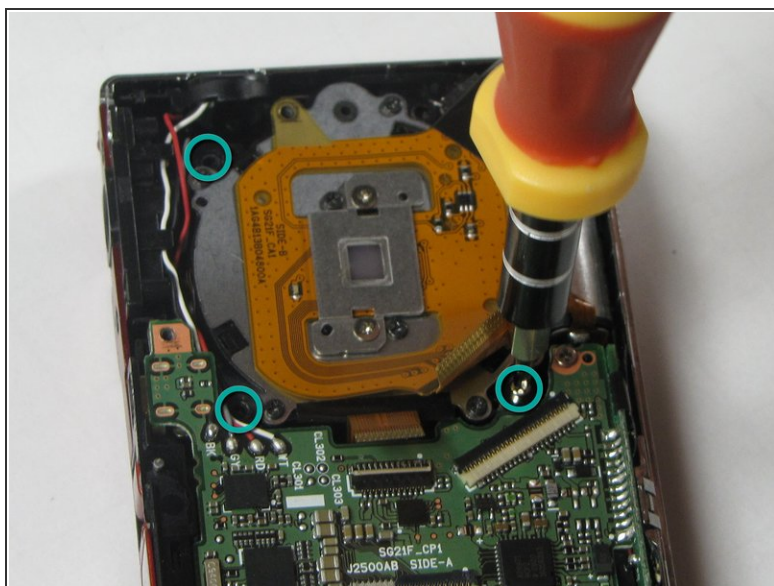
## Step 7 — Lens Unit



- Disconnect the two ribbon cables from the lens unit by using the spudger to lift the ribbon gates.
- ⓘ One gate is black and another is white.

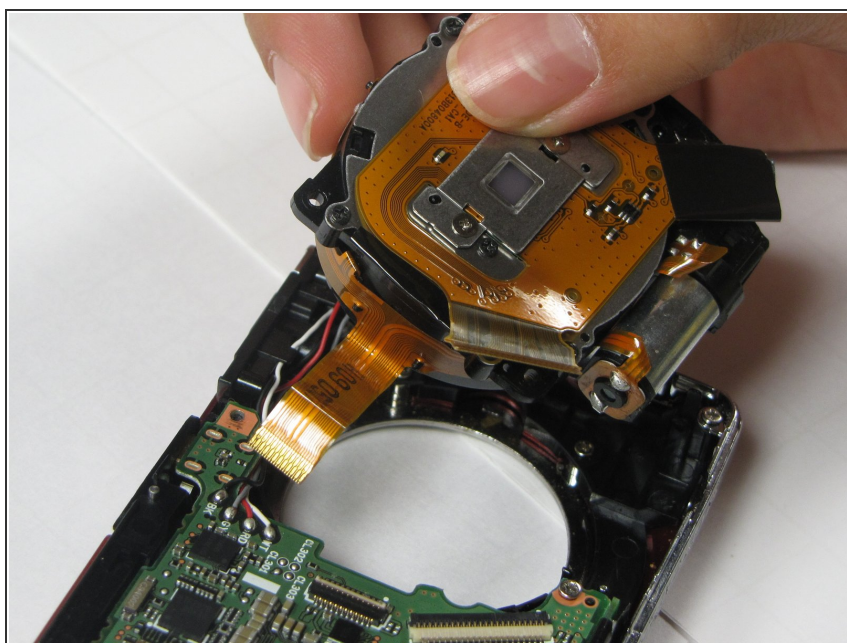


## Step 8



- Remove the three silver screws.
- Three 5.5mm screws

## Step 9



- Lift the lens unit free of the camera. A spudger can be used to separate the lens unit if necessary.



To reassemble your device, follow these instructions in reverse order.