



# Scotch TL901 Heating Element Replacement

This guide will show you how to replace the heater in the Scotch TL901.

Written By: JackMacWindows





## TOOLS:

- [Phillips #1 Screwdriver](#) (1)
- [Flush Wire Cutters](#) (1)
- [Soldering Iron](#) (1)



## PARTS:

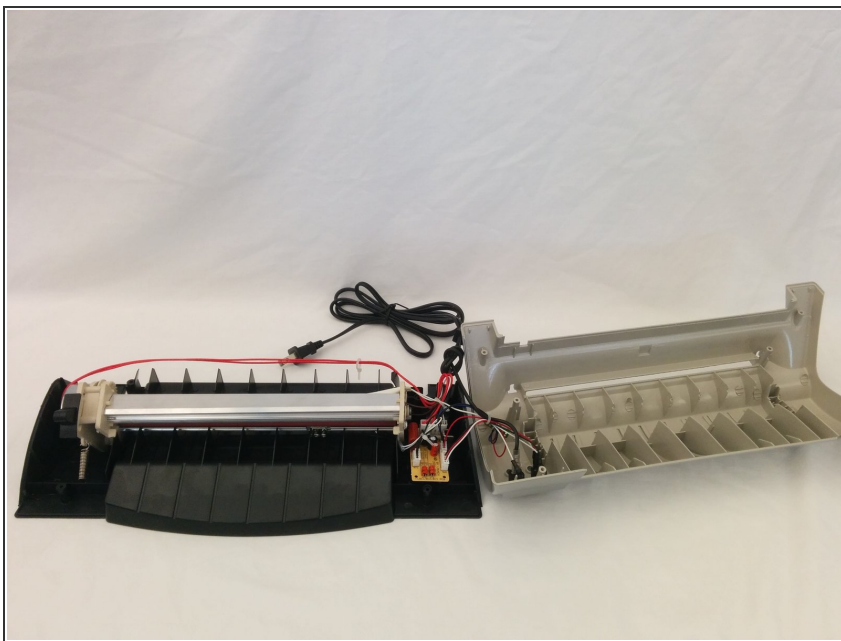
- [SEFUSE SF188E](#) (1)

## Step 1 — Unscrewing top



- Remove six Phillips screws from underneath the unit. Four screws are placed under the pads, one is open, and one may be covered by a sticker.

## Step 2 — Removing cover



- Open the unit by holding down the black bottom and pulling the silver top off.
- ⚠ Be careful of the wires connecting the power switch, as the power switch is screwed to the top case..

### Step 3 — Removing heating element



- Remove the beige-colored foam piece from the rollers. This is where the heating element is placed.
- It may be hard to remove the element from the rollers because the element is tightly fastened in between the rollers.

### Step 4 — Unwrapping cover



- Pull off the cover to the fuse underneath. This may also be hard because the foam material is very grippy.

## Step 5 — Replacing fuse



- You can either cut off the fuse from the wire or desolder the fuse. I chose to cut the fuse off, because I do not have tools needed to desolder.
- Then just solder the new fuse onto the wires. You may want to make sure to have solder that can handle high temperatures, as this will go up to about 200 °C.

To reassemble your device, follow these instructions in reverse order.