



# Scrabble Flash Teardown

Teardown a Scrabble Flash game cube

Written By: Isaiah Payton





## TOOLS:

- [Spudger](#) (1)
  - [Phillips #1 Screwdriver](#) (1)
-

## Step 1 — Scrabble Flash Teardown



- This is a small game but still surprisingly fun... but not enough to keep me from tearing it down!

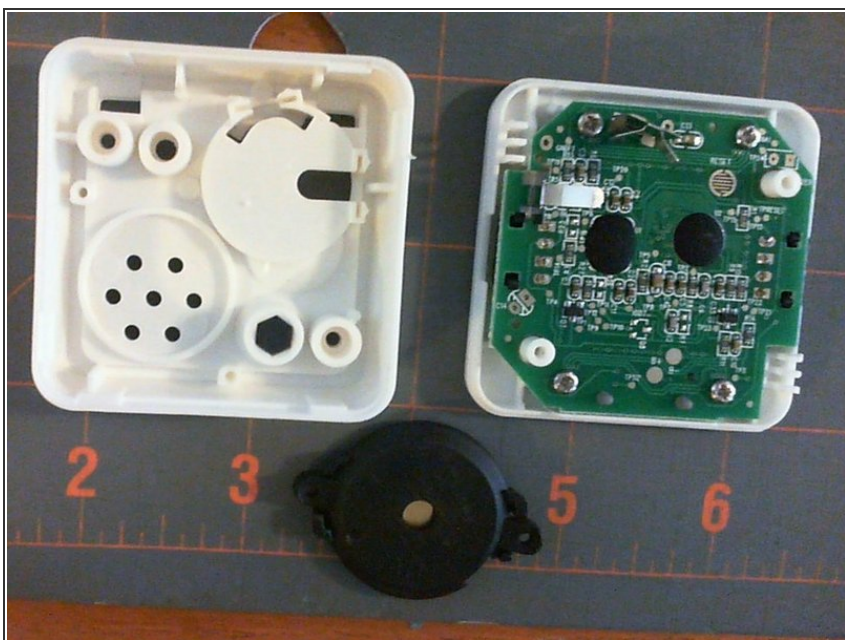
## Step 2 — Remove the Back



- This was held together by only one Phillips screw. So far so good.
- Battery was a CR2032, which seems to be a common choice for this type/size of device
- The speaker is in the bottom-right hand corner, with the reset switch above it.

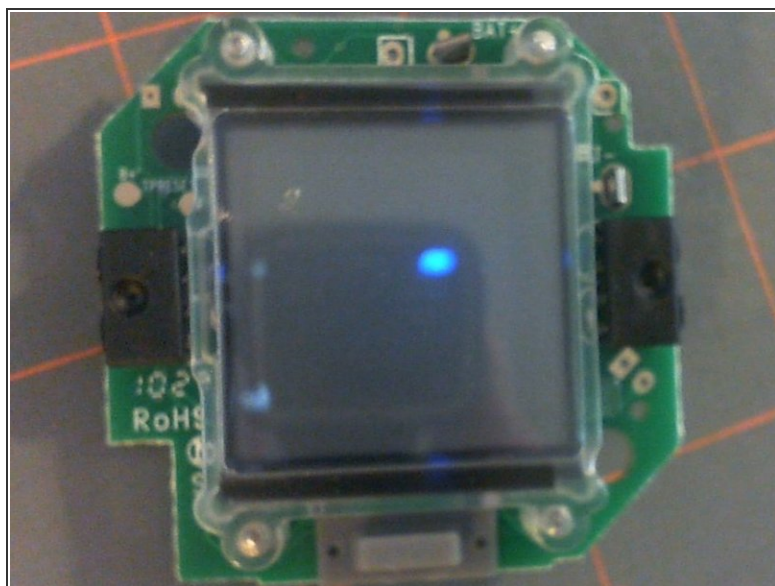
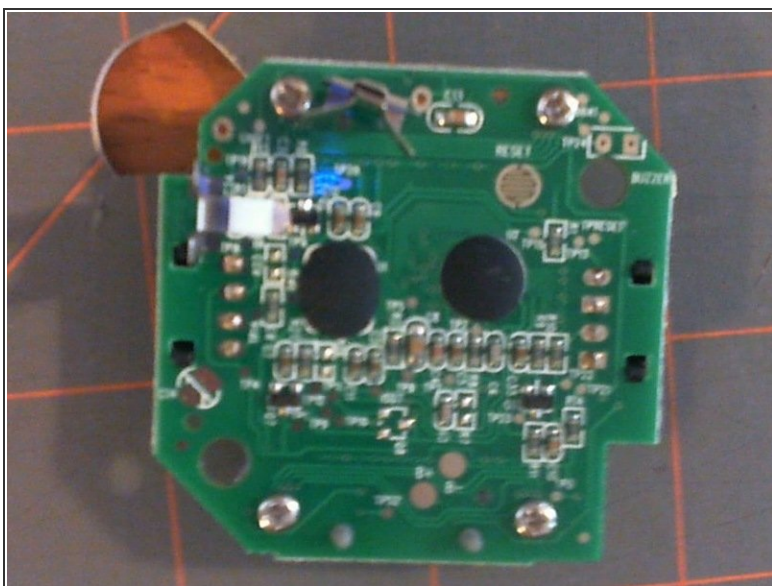


### Step 3



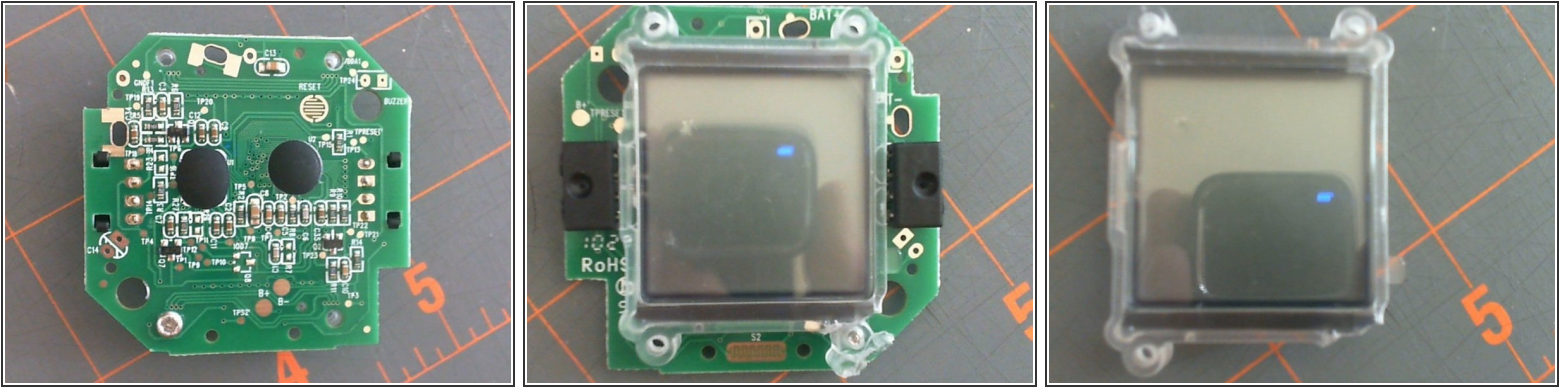
- Two screws and a clip held the two halves of the case together, with two more keeping the speaker in place. Also, it looks like the only screws used in this device are Phillips! Great!

### Step 4 — On to the Motherboard



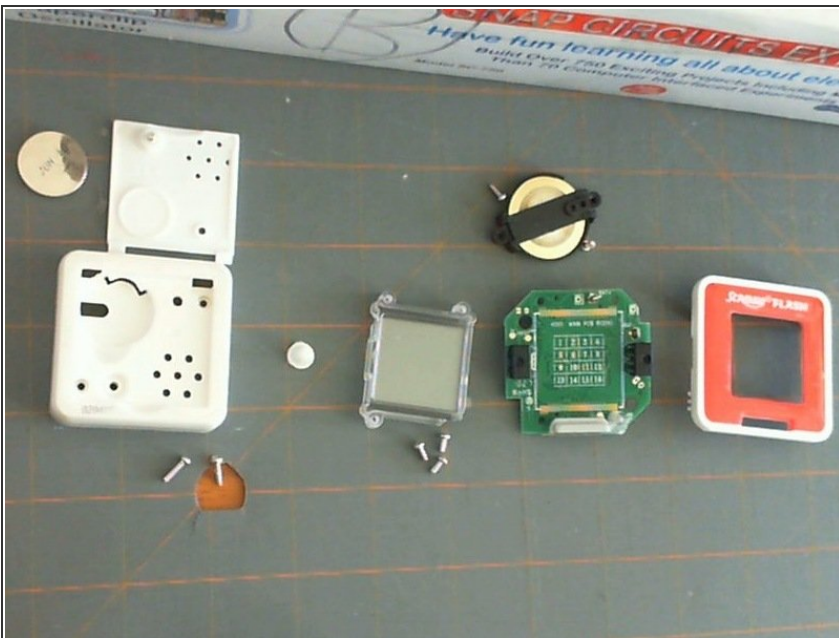
- On the back side of the motherboard, we see the battery contacts in the upper-left hand corner, and the four screws that hold the display to the front.

## Step 5 — Display Removal



- After removing three of the screws, I found that the one holding down the bottom-left corner of the display was stripped, forcing me to cut and rotate the corner away.
- After that however, it just dropped right off.
- The display is just a simple black and white LCD.

## Step 6 — Done!



- And here we are, all done!