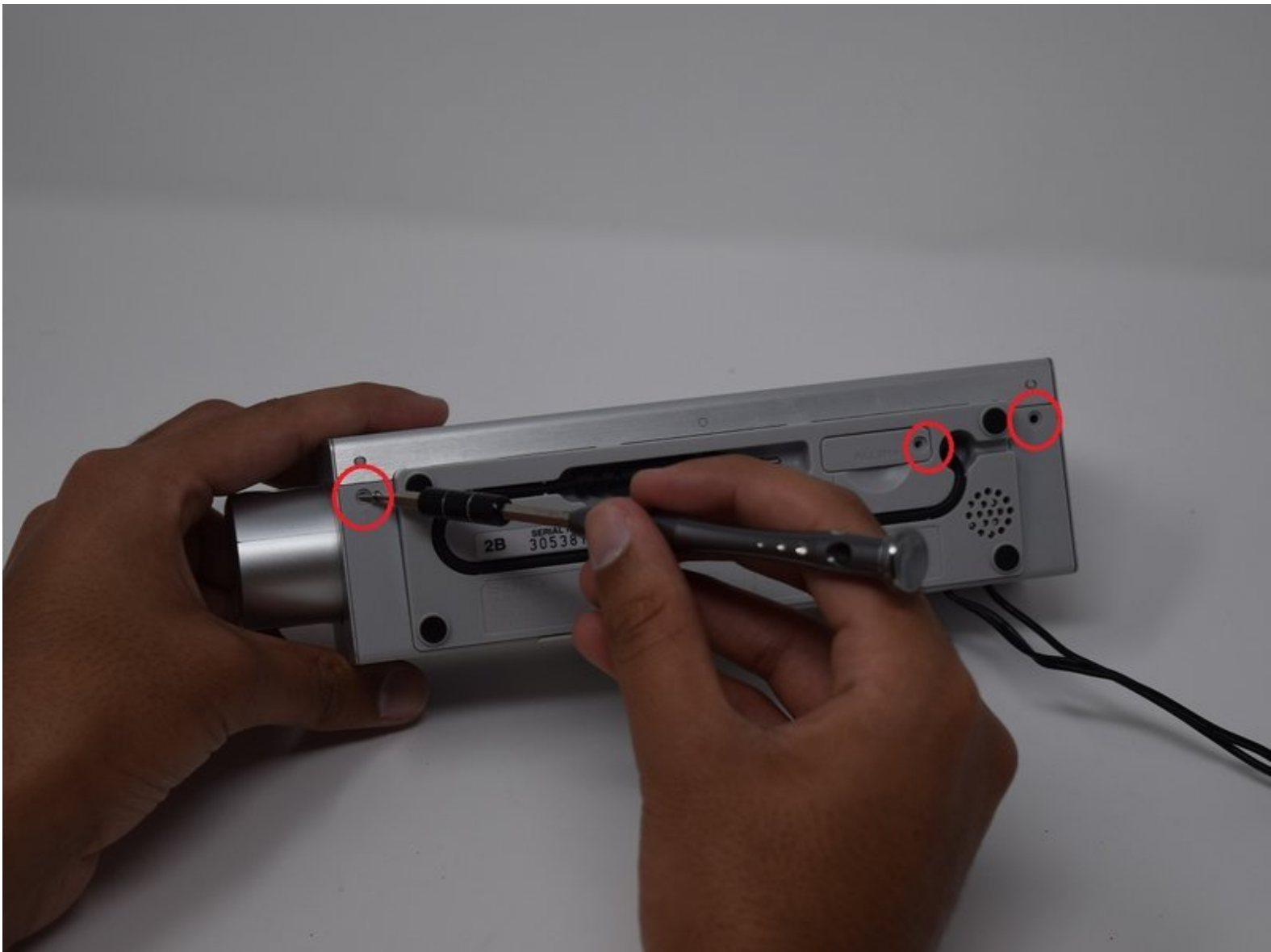




Screen Replacement

This guide will help fix any display issues you are facing with the Sony Dream Machine.

Written By: Gurleen Powar



INTRODUCTION

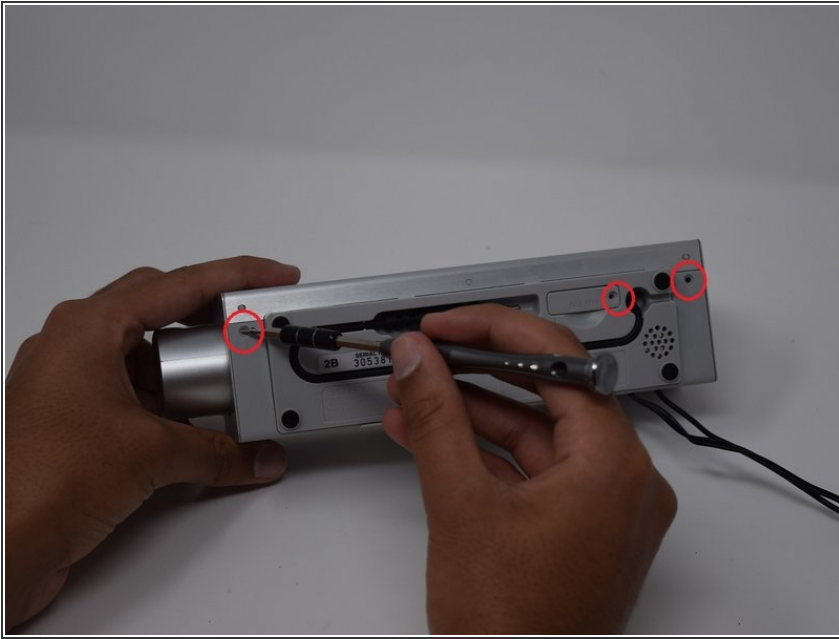
If the display on the Sony Dream Machine is not showing up properly or has any similar issues, the display monitor may need to be adjusted. Please see the Sony Dream Machine ICF-C717PJ Troubleshooting page: Sony Dream Machine ICF-C717PJ to eliminate other possible issues before tampering with the screen/display.



TOOLS:

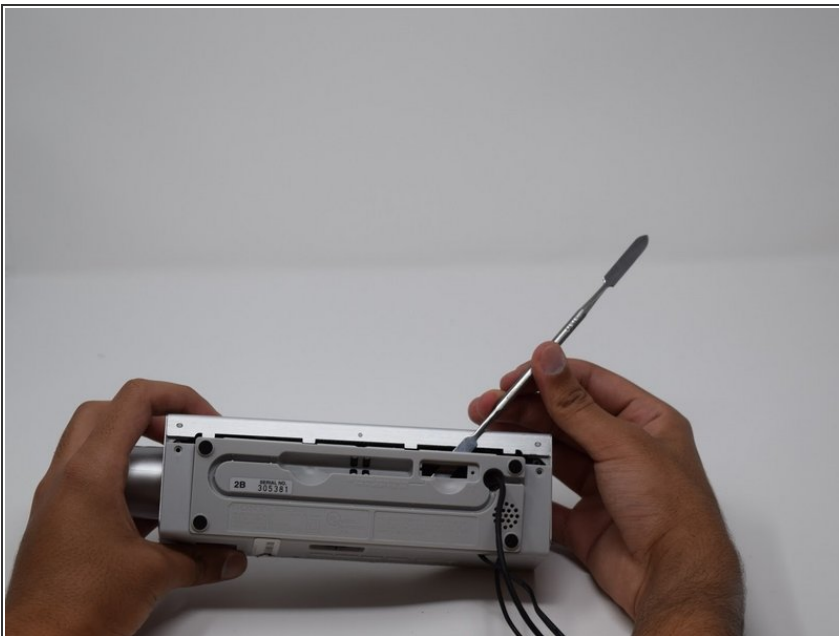
- [Phillips #0 Screwdriver](#) (1)
-

Step 1 — Screen



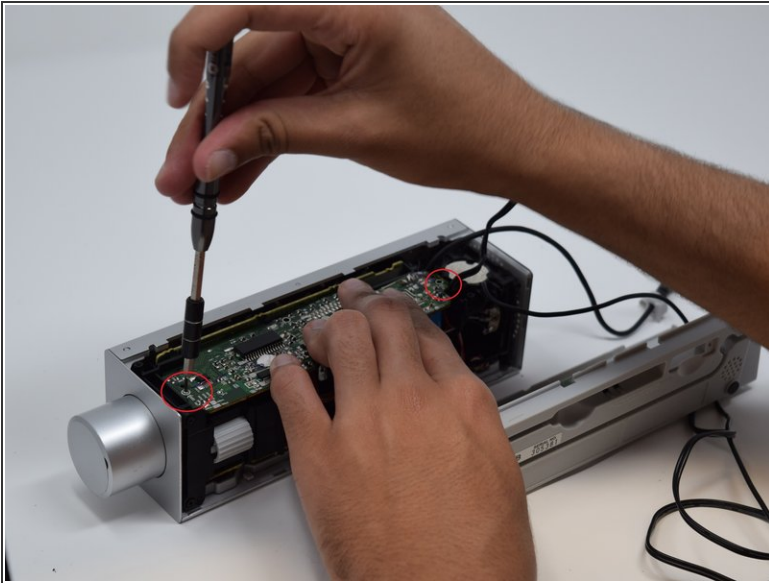
- Using the Phillips #0 screwdriver, unscrew all screws connecting back panel to the device.

Step 2



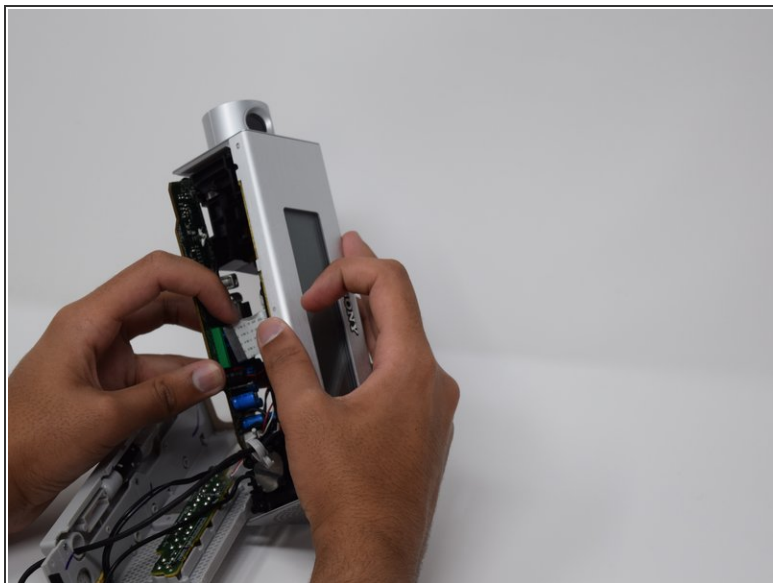
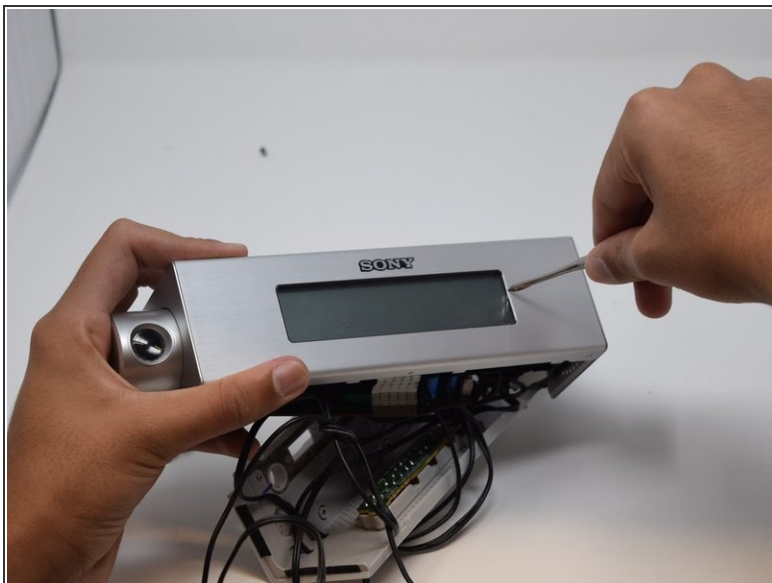
- Pry open back cover of the clock with a thin, flat tool.

Step 3



- Unscrew the screws connecting the motor board to the device.
- Gently pull motor board away from the device to gain access to the screen.

Step 4



- Flip the device over so the front is facing you and push the screen inwards, towards the inside of the device.
- After removing screen, insert the new one by pressing it firmly into place. When correctly locked in place, the screen should not easily move in either direction.

To reassemble your device, follow these instructions in reverse order.