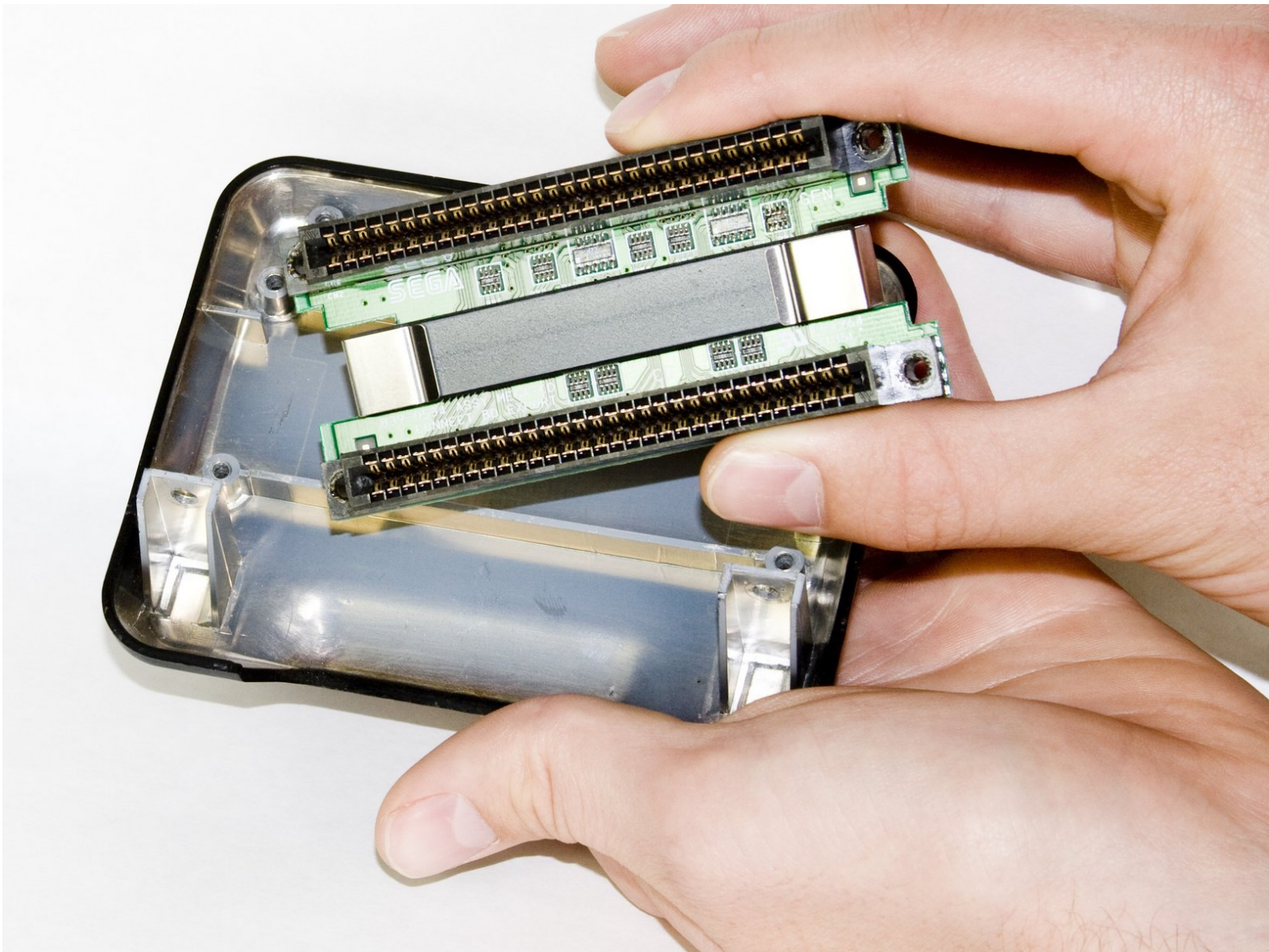




# Sega CD Genesis Connector Replacement

This guide will show you how to remove the Sega Genesis connector from your console

Written By: Ryan Kotzebue







## TOOLS:

- [Phillips #00 Screwdriver](#) (1)
  - [Spudger](#) (1)
-



## Step 1 — Sega CD Plastic Housing Removal



- Using a Phillips head screwdriver remove six screws from the bottom of the console.
  - The six screws are marked.

## Step 2



- Remove the two screws that attach the Genesis' connector to the rest of the console.
  - The two screws are marked in the diagram.

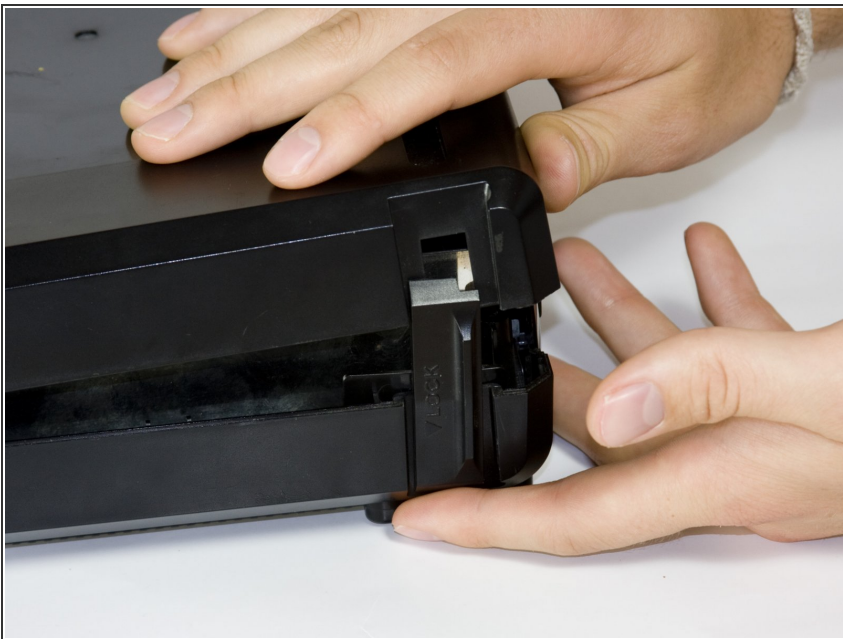


### Step 3



- Slide the lock tab to the left to separate the halves of the console.

### Step 4



- Lift from the left side to remove the top of the case.

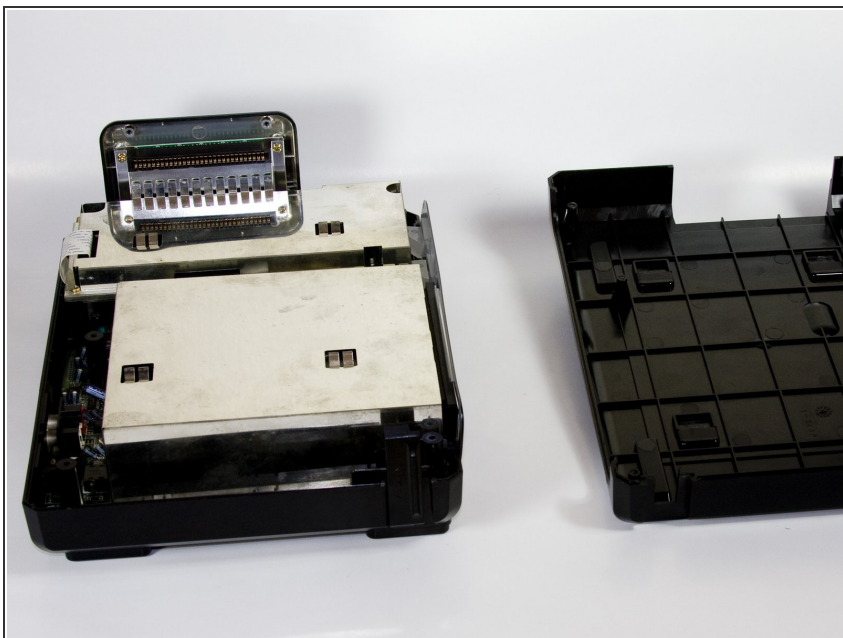


## Step 5



- Using the spudger, pry the cover off of the Genesis attachment.

## Step 6



- Lift the top of the case to remove the cover.

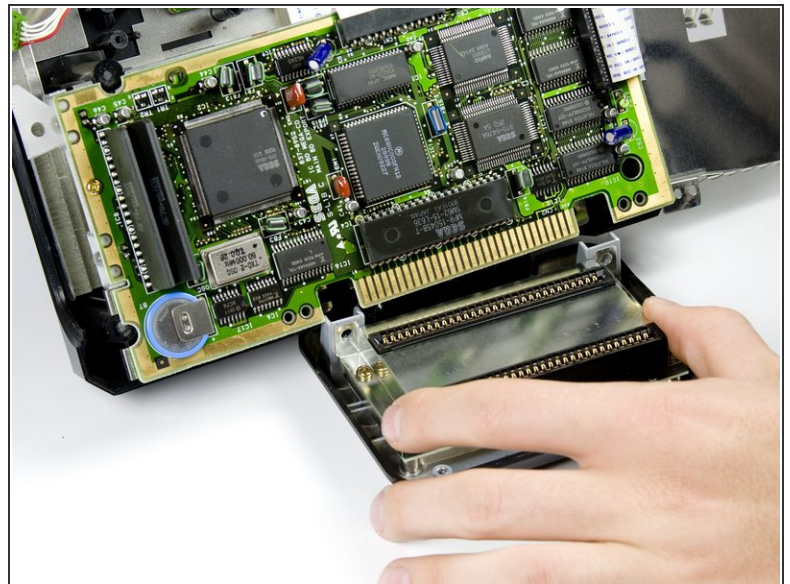
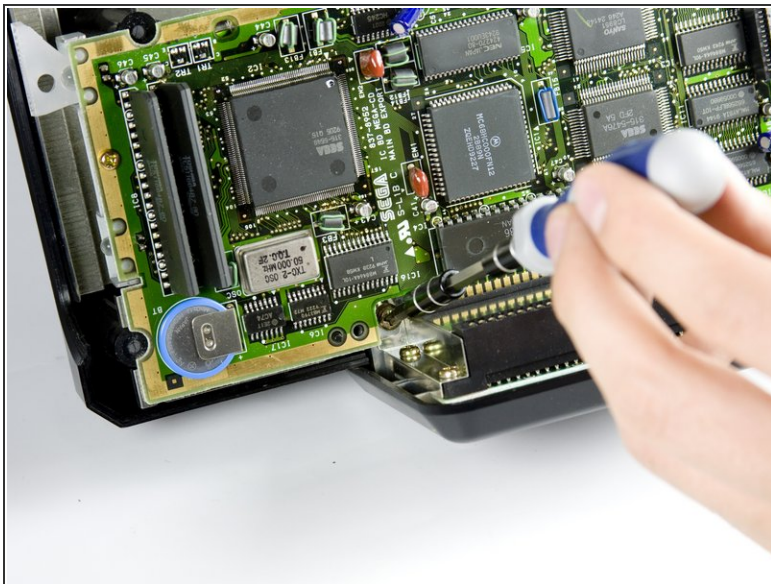


## Step 7



- Remove the faceplate by pulling it up, then out.

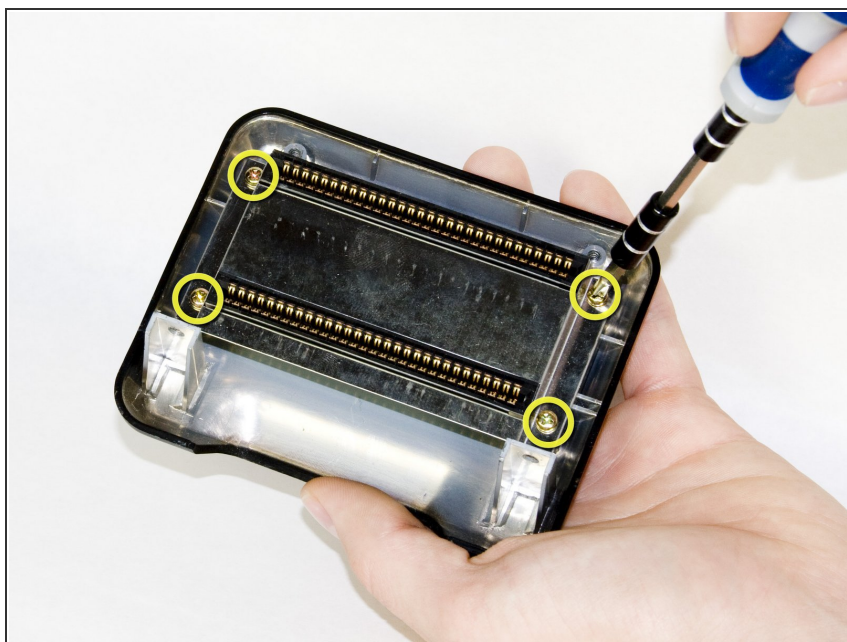
## Step 8 — Genesis Connector



- Using a #00 Philips screwdriver remove the two screws that attach the Genesis adapter to the console.
- Disconnect the adapter from the console by carefully pulling the adapter out.

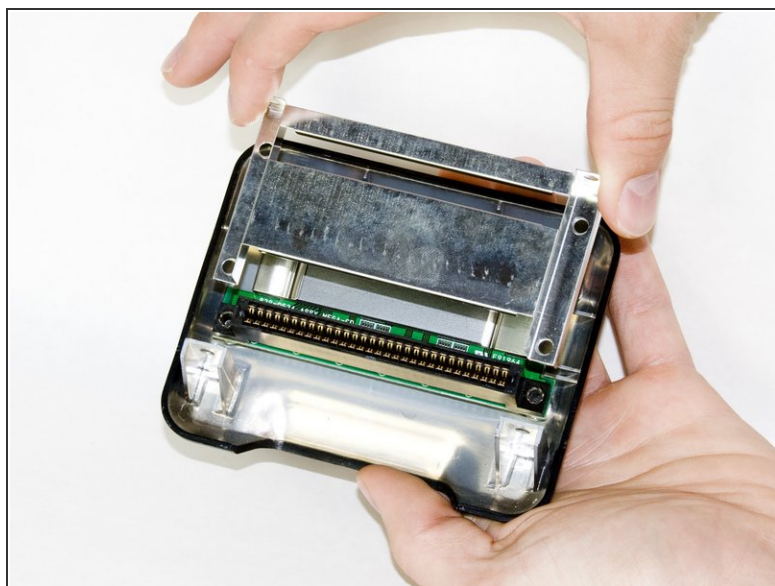
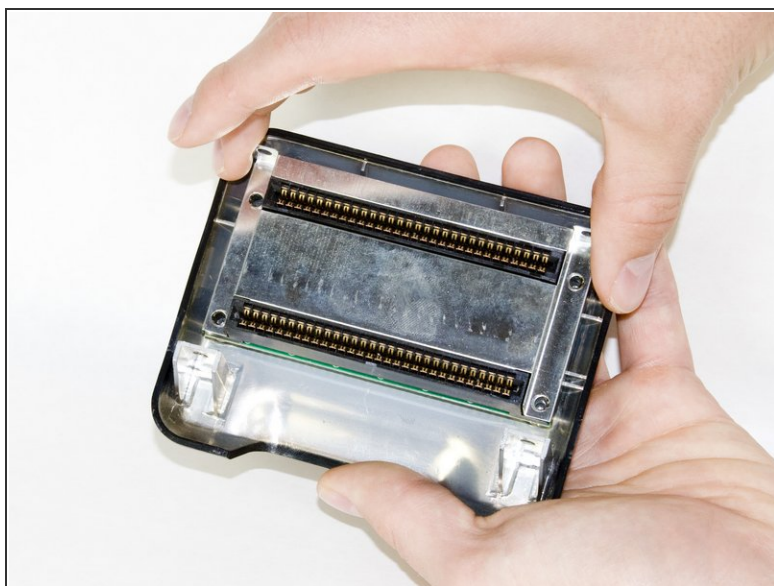


## Step 9



- Remove the four screws from the metal plate as shown using a #00 Philips screwdriver.
- The four half inch bronze screws are indicated by the yellow marking circles.

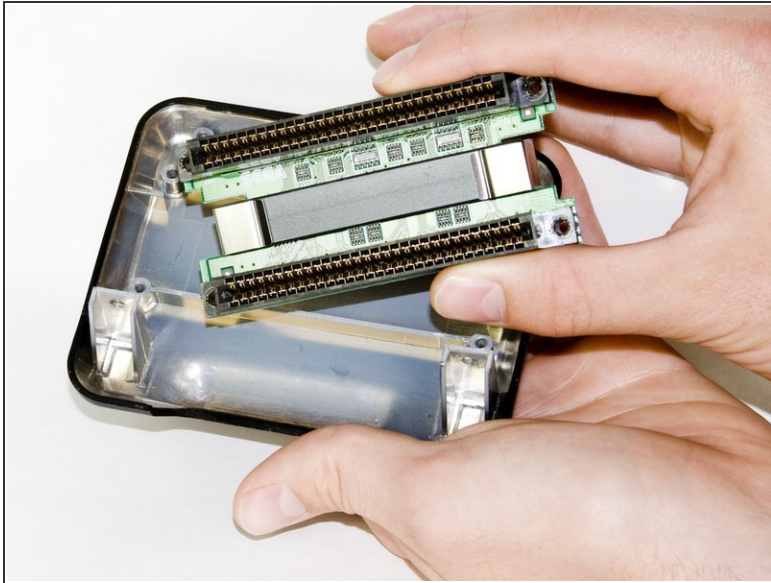
## Step 10



- Carefully remove the metal cover from the connector by sliding the cover up and out.



## Step 11



- Remove the connector from the housing.

To reassemble your device, follow these instructions in reverse order.